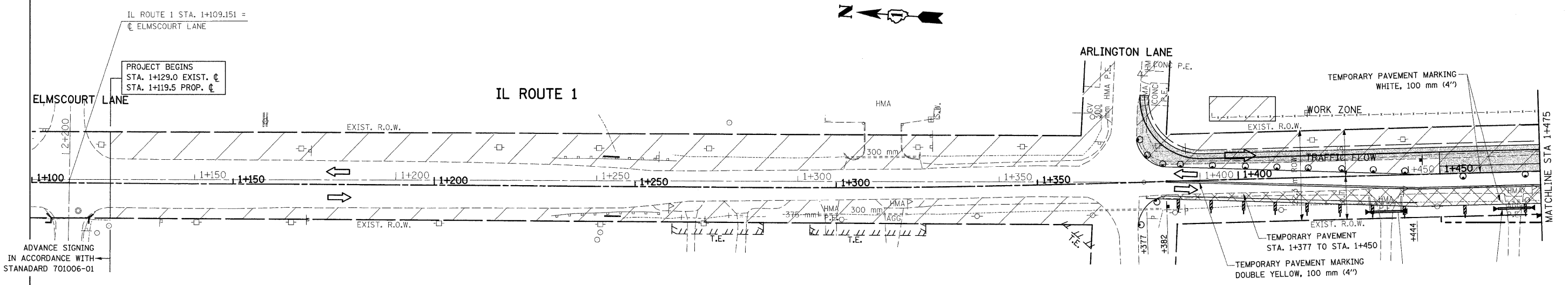


F.A.P. RTE.	SECTION	COUNTY	TOTAL SHEETS	SHEET NO.
876	9Y-R5-7	WILL	100	24
STA. 1+100		TO STA. 1+475		
FED. ROAD DIST. NO. 1 ILLINOIS FED. AID PROJECT				

CONTRACT NO. 60E52


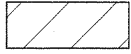
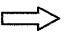


ADVANCE SIGNING
IN ACCORDANCE WITH
STANADARD 701006-01

IL ROUTE 1 STA. 1+109.151 =
CL ELMSCOURT LANE

PROJECT BEGINS
STA. 1+129.0 EXIST. CL
STA. 1+119.5 PROP. CL

LEGEND

-  PAVEMENT TO BE CONSTRUCTED
-  WORK ZONE
-  TRAFFIC FLOW

REVISIONS		ILLINOIS DEPARTMENT OF TRANSPORTATION SUGGESTED MAINTENANCE OF TRAFFIC IL. 1 STAGE I
NAME	DATE	

SCALE 1:500
DATE 9/3/2008
DRAWN BY
CHECKED BY