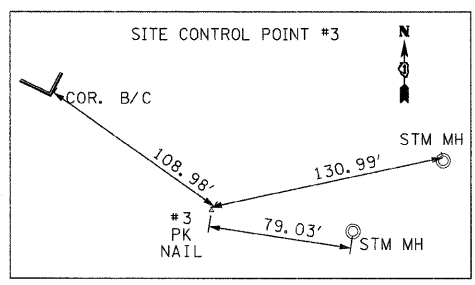
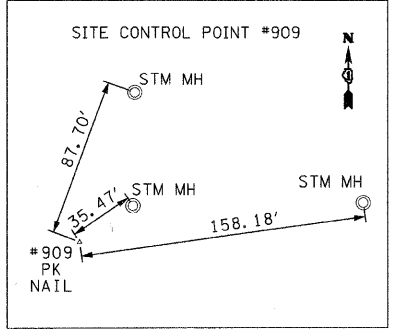
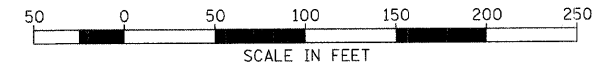


F.A.U. RTE.	SECTION	COUNTY	TOTAL SHEETS	SHEET NO.
2505	94-P4008-01-BR	KANE	81	8
STA.		TO STA.		
FED. ROAD DIST. NO.		ILLINOIS FED. AID PROJECT		



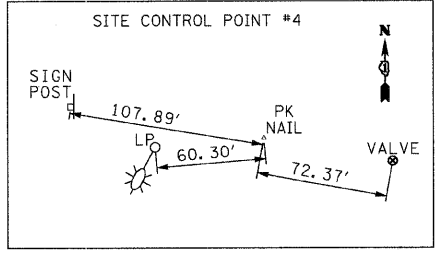
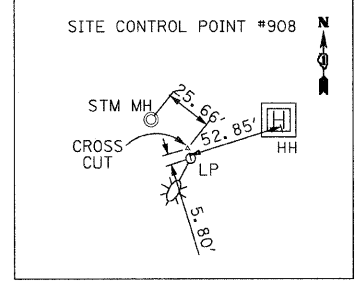
P.O.T. 10+02.97
N 1,931,841.5009
E 981,819.8802

SITE CONTROL POINT #3
SET P.K. NAIL
N 1931779.007
E 982028.297
ELEV 811.17

P.O.T. 227+00.00
N 1,932,080.4171
E 982,279.3447

SITE CONTROL POINT #908
FOUND CUT CROSS
N 982245.040
E 1931628.946
ELEV 811.27

SITE CONTROL POINT #909
FOUND P.K. NAIL
N 981692.732
E 1931811.079
ELEV 806.17



SITE CONTROL POINT #4
SET P.K. NAIL
N 1931477.076
E 982588.510
ELEV 819.17

P.O.C. 23+84.00
N 1,931,474.8228
E 982,603.0378

P.O.C. 25+81.30
N 1,931,418.7082
E 982,791.9634

PROJECT CONTROL ORIGINATING FROM
NGS STATION DESIGNATION: IL KANE 8 40 8
PID: AJ3027
ILLINOIS STATE PLANE COORDINATE, EAST ZONE
ELEVATION REFERENCED TO NAVD 88
N - 1931692.596
E - 977177.197
ELEV - 765.583

PROP. CURVE C-1
PI STA. = 10+57.54
Δ = 37° 59' 25" (RT)
D = 38° 11' 50"
R = 150.00'
T = 51.64'
L = 99.46'
E = 8.64'
P.C. STA. = 10+05.91
N=1,931,841.5760
E=981,822.8183
P.T. STA. = 11+05.37
N=1,931,807.3827
E=981,914.2824

PROP. CURVE C-2
PI STA. = 11+53.31
Δ = 35° 27' 04" (LT)
D = 38° 11' 50"
R = 150.00'
T = 47.94'
L = 92.81'
E = 7.48'
P.C. STA. = 11+05.37
N=1,931,807.3827
E=981,914.2824
P.T. STA. = 11+98.18
N=1,931,773.5109
E=981,999.1072

PROP. CURVE C-3
PI STA. = 12+23.65
Δ = 19° 16' 24" (RT)
D = 38° 11' 50"
R = 150.00'
T = 25.47'
L = 50.46'
E = 2.15'
P.C. STA. = 11+98.18
N=1,931,773.5109
E=981,999.1072
P.T. STA. = 12+48.64
N=1,931,761.6351
E=982,047.9029

PROP. CURVE C-4
PI STA. = 13+02.12
Δ = 4° 32' 41" (RT)
D = 4° 15' 02"
R = 1,347.96'
T = 53.49'
L = 106.92'
E = 1.06'
P.C. STA. = 12+48.64
N=1,931,761.6351
E=982,047.9029
P.T. STA. = 13+55.56
N=1,931,715.4698
E=982,144.3104

PROP. CURVE C-5
PI STA. = 13+96.72
Δ = 99° 05' 29" (RT)
D = 42° 24' 47"
R = 13.50'
T = 15.83'
L = 23.35'
E = 7.31'
P.C. STA. = 13+80.89
N=1,931,703.6320
E=982,166.7058
P.T. STA. = 14+04.24
N=1,931,683.5815
E=982,171.1856

PROP. CURVE C-6
PI STA. = 14+15.05
Δ = 77° 23' 03" (RT)
D = 42° 24' 47"
R = 13.50'
T = 10.81'
L = 18.23'
E = 3.80'
P.C. STA. = 14+04.24
N=1,931,683.5815
E=982,171.1856
P.T. STA. = 14+22.47
N=1,931,679.3963
E=982,154.8341

PROP. CURVE C-7
PI STA. = 16+44.35
Δ = 86° 11' 13" (RT)
D = 42° 24' 47"
R = 13.50'
T = 12.63'
L = 20.31'
E = 4.99'
P.C. STA. = 16+31.72
N=1,931,765.6242
E=981,964.1748
P.T. STA. = 16+52.03
N=1,931,782.6574
E=981,957.0946

PROP. CURVE C-8
PI STA. = 16+66.79
Δ = 95° 06' 35" (RT)
D = 42° 24' 47"
R = 13.50'
T = 14.76'
L = 22.41'
E = 6.50'
P.C. STA. = 16+52.03
N=1,931,782.6574
E=981,957.0946
P.T. STA. = 16+74.44
N=1,931,790.0962
E=981,975.5778

PROP. CURVE C-9
PI STA. = 19+06.44
Δ = 5° 06' 35" (LT)
D = 19° 05' 55"
R = 300.00'
T = 13.39'
L = 26.75'
E = 0.30'
P.C. STA. = 18+93.06
N=1,931,695.5225
E=982,172.6850
P.T. STA. = 19+19.81
N=1,931,685.0388
E=982,197.2907

PROP. CURVE C-10
PI STA. = 21+35.26
Δ = 30° 29' 29" (RT)
D = 33° 42' 12"
R = 170.00'
T = 46.33'
L = 90.47'
E = 6.20'
P.C. STA. = 20+88.93
N=1,931,625.7523
E=982,355.6718
P.T. STA. = 21+79.40
N=1,931,573.4941
E=982,428.2150

PROP. CURVE C-11
PI STA. = 22+40.73
Δ = 30° 29' 29" (LT)
D = 33° 42' 12"
R = 170.00'
T = 46.33'
L = 90.47'
E = 6.20'
P.C. STA. = 21+94.40
N=1,931,561.8346
E=982,437.6520
P.T. STA. = 22+84.87
N=1,931,509.5763
E=982,510.1953

PROP. CURVE C-12
PI STA. = 24+82.87
Δ = 9° 20' 57" (LT)
D = 4° 44' 19"
R = 1,209.15'
T = 98.87'
L = 197.30'
E = 4.04'
P.C. STA. = 23+84.00
N=1,931,474.8228
E=982,603.0378
P.T. STA. = 25+81.30
N=1,931,418.7082
E=982,791.9634

REVISIONS	
NAME	DATE



Robert H. Anderson & Associates, Inc.
Consulting Engineers
License No. 184-005281

ILLINOIS DEPARTMENT OF TRANSPORTATION
PEDESTRIAN BRIDGE OVER
RANDALL ROAD AT SILVER GLEN ROAD
FAU 2505, SECTION 94-P4008-01-BR
STRUCTURE NUMBER 045-9000
ALIGNMENT AND TIES
SHEET 1 OF 1
VERT. SCALE: HORIZ. 1"=50'
DATE OCTOBER 31, 2008
DRAWN BY TC
CHECKED BY SBP

PLT DATE = 11/4/2008
FILE NAME = H:\AS\CP\RD\st\1188648\Bike Bridge\Design\Draw\1188648.dgn
PLT SCALE = 1"=50'
REFERENCE = #REF#