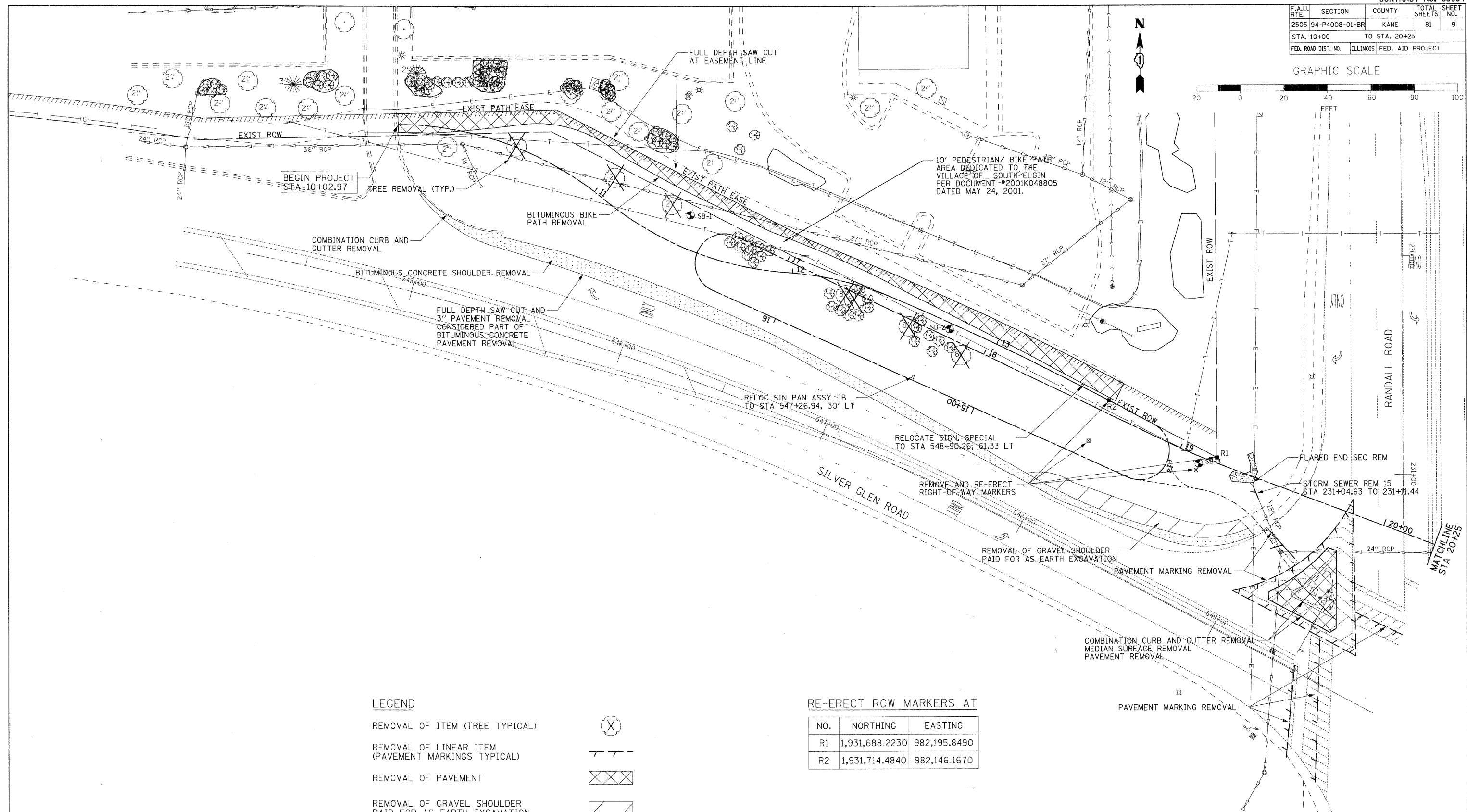


F.A.U. RTE.	SECTION	COUNTY	TOTAL SHEETS	SHEET NO.
2505 94-P4008-01-BR		KANE	81	9
STA. 10+00		TO STA. 20+25		
FED. ROAD DIST. NO.		ILLINOIS FED. AID PROJECT		

GRAPHIC SCALE



LEGEND

- REMOVAL OF ITEM (TREE TYPICAL)
- REMOVAL OF LINEAR ITEM (PAVEMENT MARKINGS TYPICAL)
- REMOVAL OF PAVEMENT
- REMOVAL OF GRAVEL SHOULDER PAID FOR AS EARTH EXCAVATION
- BITUMINOUS CONCRETE SHOULDER REMOVAL
- SOIL BORING LOCATION AND NAME

RE-ERECT ROW MARKERS AT

NO.	NORTHING	EASTING
R1	1,931,688.2230	982,195.8490
R2	1,931,714.4840	982,146.1670

PLOT DATE = 11/4/2008
 FILE NAME = H:\STCPer\Dist\116864Bike Br\dgs\Design\00_116864D01.dgn
 PLOT SCALE = 1"=20'
 REFERENCE = *REF*



Robert H. Anderson & Associates, Inc.
 Consulting Engineers
 License No. 184-005281

REVISIONS	
NAME	DATE

ILLINOIS DEPARTMENT OF TRANSPORTATION
 PEDESTRIAN BRIDGE OVER
 RANDALL ROAD AT SILVER GLEN ROAD
 FAU 2505, SECTION 94-P4008-01-BR
 STRUCTURE NUMBER 045-9000
 EXISTING CONDITIONS & REMOVAL PLAN
 SHEET 1 OF 2

VERT. SCALE: 1"=20'
 HORIZ. SCALE: 1"=20'
 DATE: OCTOBER 31, 2008

DRAWN BY TC
 CHECKED BY SBP