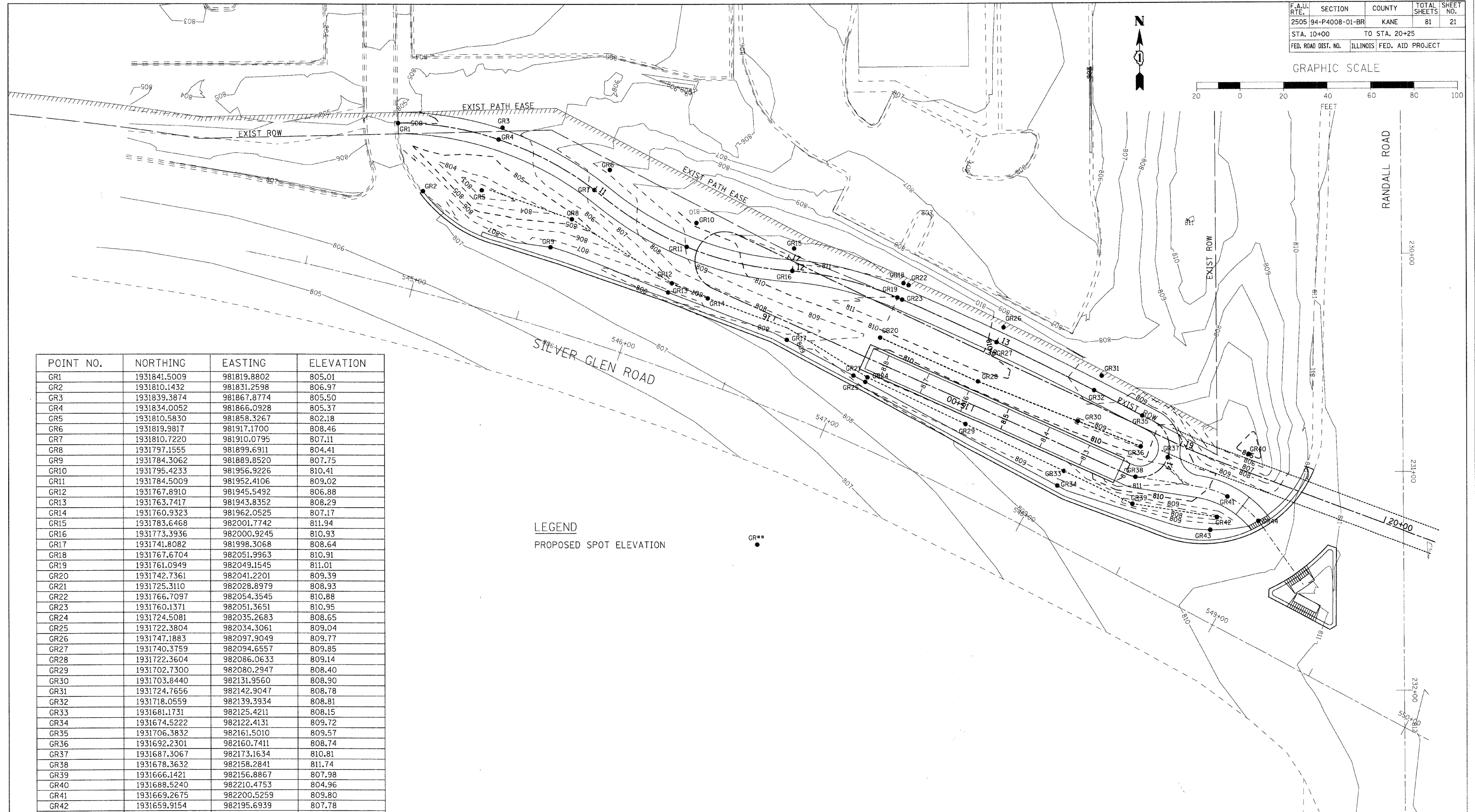


F.A.U. RTE.	SECTION	COUNTY	TOTAL SHEETS	SHEET NO.
2505	94-P4008-01-BR	KANE	81	21
STA. 10+00		TO STA. 20+25		
FED. ROAD DIST. NO.		ILLINOIS FED. AID PROJECT		

GRAPHIC SCALE



POINT NO.	NORTHING	EASTING	ELEVATION
GR1	1931841.5009	981819.8802	805.01
GR2	1931810.1432	981831.2598	806.97
GR3	1931839.3874	981867.8774	805.50
GR4	1931834.0052	981866.0928	805.37
GR5	1931810.5830	981858.3267	802.18
GR6	1931819.9817	981917.1700	808.46
GR7	1931810.7220	981910.0795	807.11
GR8	1931797.1555	981899.6911	804.41
GR9	1931784.3062	981889.8520	807.75
GR10	1931795.4233	981956.9226	810.41
GR11	1931784.5009	981952.4106	809.02
GR12	1931767.8910	981945.5492	806.88
GR13	1931763.7417	981943.8352	808.29
GR14	1931760.9323	981962.0525	807.17
GR15	1931783.6468	982001.7742	811.94
GR16	1931773.3936	982000.9245	810.93
GR17	1931741.8082	981998.3068	808.64
GR18	1931767.6704	982051.9963	810.91
GR19	1931761.0949	982049.1545	811.01
GR20	1931742.7361	982041.2201	809.39
GR21	1931725.3110	982028.8979	808.93
GR22	1931766.7097	982054.3545	810.88
GR23	1931760.1371	982051.3651	810.95
GR24	1931724.5081	982035.2683	808.65
GR25	1931722.3804	982034.3061	809.04
GR26	1931747.1883	982097.9049	809.77
GR27	1931740.3759	982094.6557	809.85
GR28	1931722.3604	982086.0633	809.14
GR29	1931702.7300	982080.2947	808.40
GR30	1931703.8440	982131.9560	808.90
GR31	1931724.7656	982142.9047	808.78
GR32	1931718.0559	982139.3934	808.81
GR33	1931681.1731	982125.4211	808.15
GR34	1931674.5222	982122.4131	809.72
GR35	1931706.3832	982161.5010	809.57
GR36	1931692.2301	982160.7411	808.74
GR37	1931687.3067	982173.1634	810.81
GR38	1931678.3632	982158.2841	811.74
GR39	1931666.1421	982156.8867	807.98
GR40	1931688.5240	982210.4753	804.96
GR41	1931669.2675	982200.5259	809.80
GR42	1931659.9154	982195.6939	807.78
GR43	1931653.9682	982192.6211	809.50
GR44	1931658.0549	982214.7640	809.22

LEGEND  
PROPOSED SPOT ELEVATION

GR\*\*

PLOT DATE = 11/4/2008  
 FILE NAME = H:\STC\FE-K01\1168646\Brdge\Design\Drawn\081168646\GR1.dgn  
 PLOT SCALE = 1"=20'  
 REFERENCE = #REF#



Robert H. Anderson & Associates, Inc.  
Consulting Engineers  
License No. 184-005281

REVISIONS	
NAME	DATE

ILLINOIS DEPARTMENT OF TRANSPORTATION  
PEDESTRIAN BRIDGE OVER  
RANDALL ROAD AT SILVER GLEN ROAD  
FAU 2505, SECTION 94-P4008-01-BR  
STRUCTURE NUMBER 045-9000  
GRADING PLAN  
SHEET 1 OF 2

SCALE: VERT. 1"=20'  
HORIZ. 1"=20'  
DATE: OCTOBER 31, 2008

DRAWN BY TC  
CHECKED BY SBP