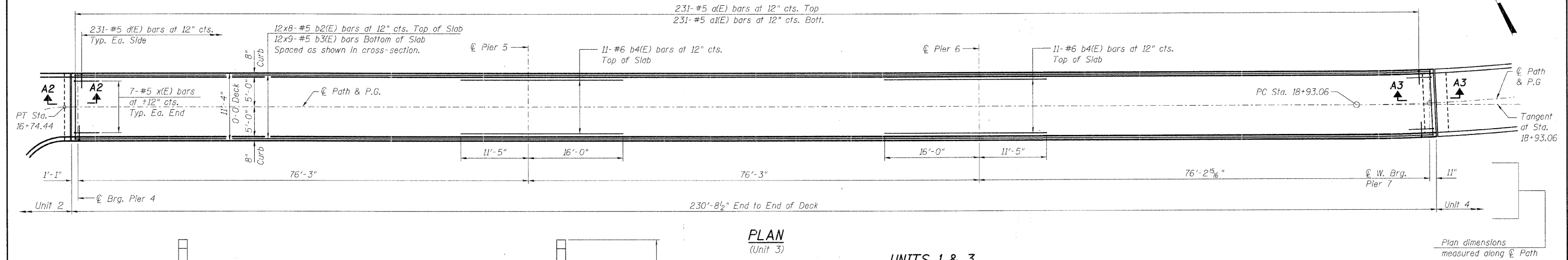
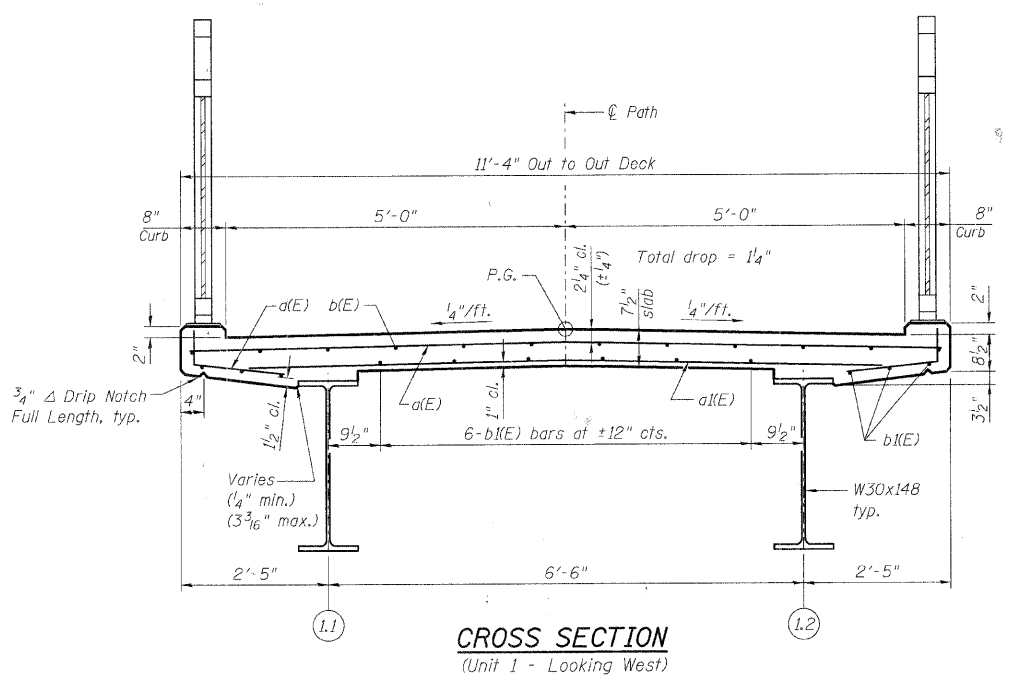
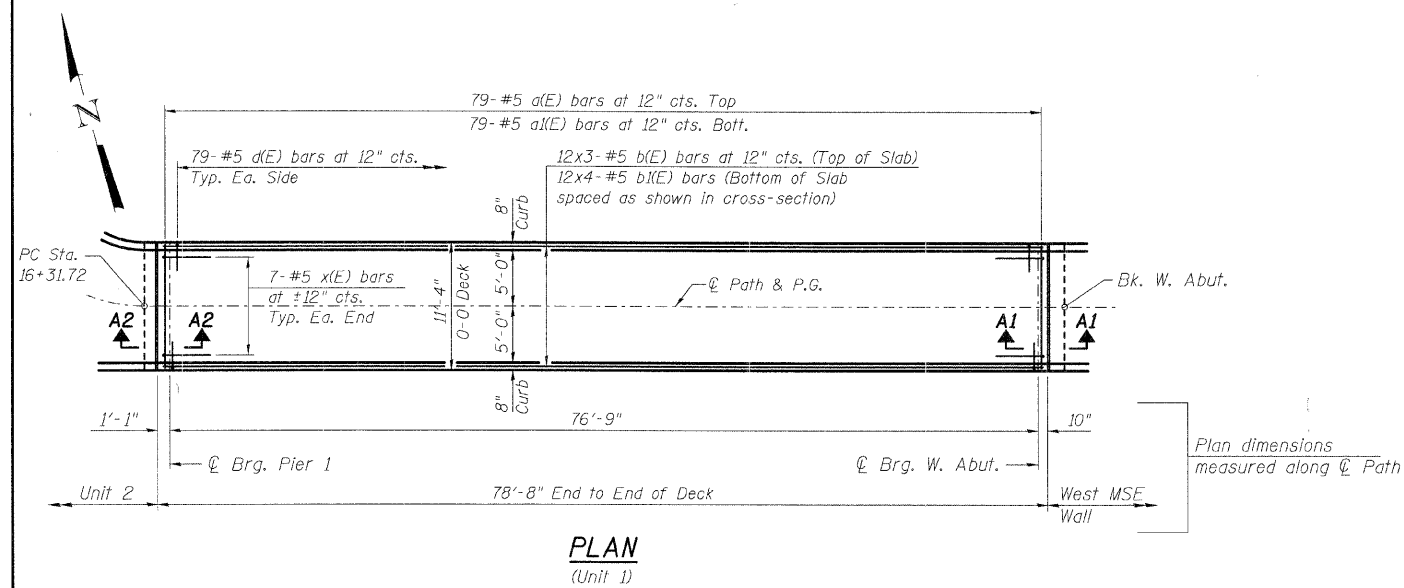
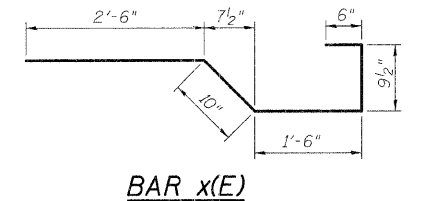
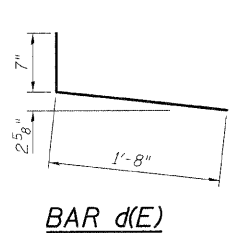


Contract #83984

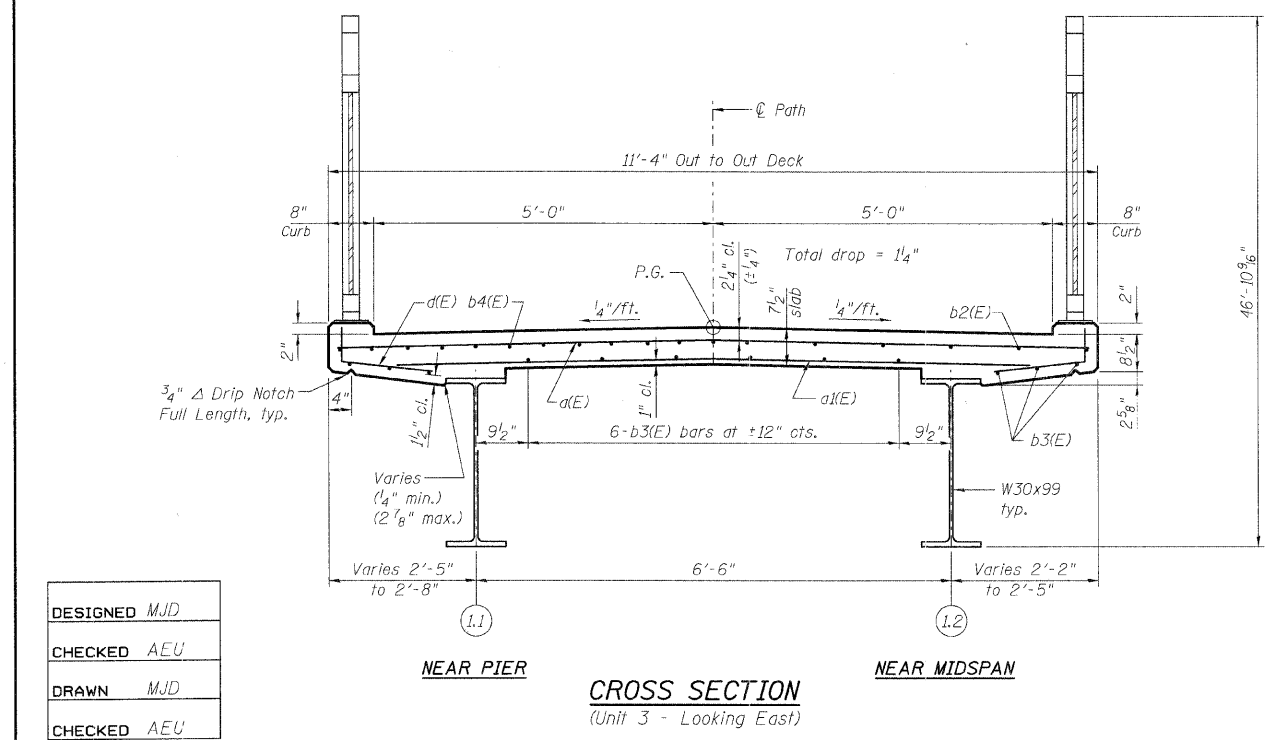


**UNITS 1 & 3  
BILL OF MATERIAL**

Bar	No.	Size	Length	Shape
d(E)	330	#5	11'-0"	—
a1(E)	310	#5	10'-4"	—
a2(E)	12	#5	6'-3"	—
b(E)	36	#5	27'-6"	—
b1(E)	48	#5	21'-2"	—
b2(E)	96	#5	30'-9"	—
b3(E)	108	#5	27'-7"	—
b4(E)	22	#6	27'-5"	—
d(E)	620	#5	2'-3"	└
x(E)	28	#5	6'-1 1/2"	└
Concrete Superstructure		Cu. Yd.		94.5
Reinforcement Bars, Epoxy Coated		Pound		18,130



**NOTES:**  
For section A1-A1, A2-A2, and A3-A3 see Sheet S-14.  
Bars indicated thus 20 x 3-#5 etc. indicates 20 lines of bars with 3 lengths per line.  
See Sheet S-14 for additional reinforcement details.



DESIGNED MJD  
CHECKED AEU  
DRAWN MJD  
CHECKED AEU

**RH&A**  
Robert H. Anderson & Associates, Inc.  
Consulting Engineers  
License No. 184-005281

**DECK PLAN & CROSS SECTION  
UNITS 1 AND 3**  
PEDESTRIAN BRIDGE OVER RANDALL ROAD  
AT SILVER GLEN ROAD  
FAU 2505, SECTION 94-P4008-01-BR  
KANE COUNTY  
STRUCTURE NO. 045-9000  
DATE: OCTOBER 31, 2008