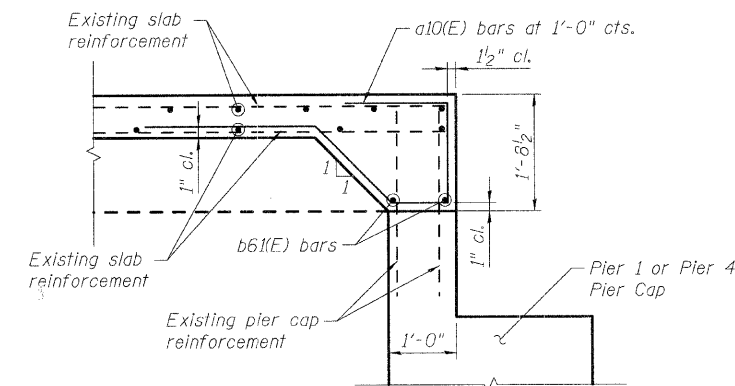


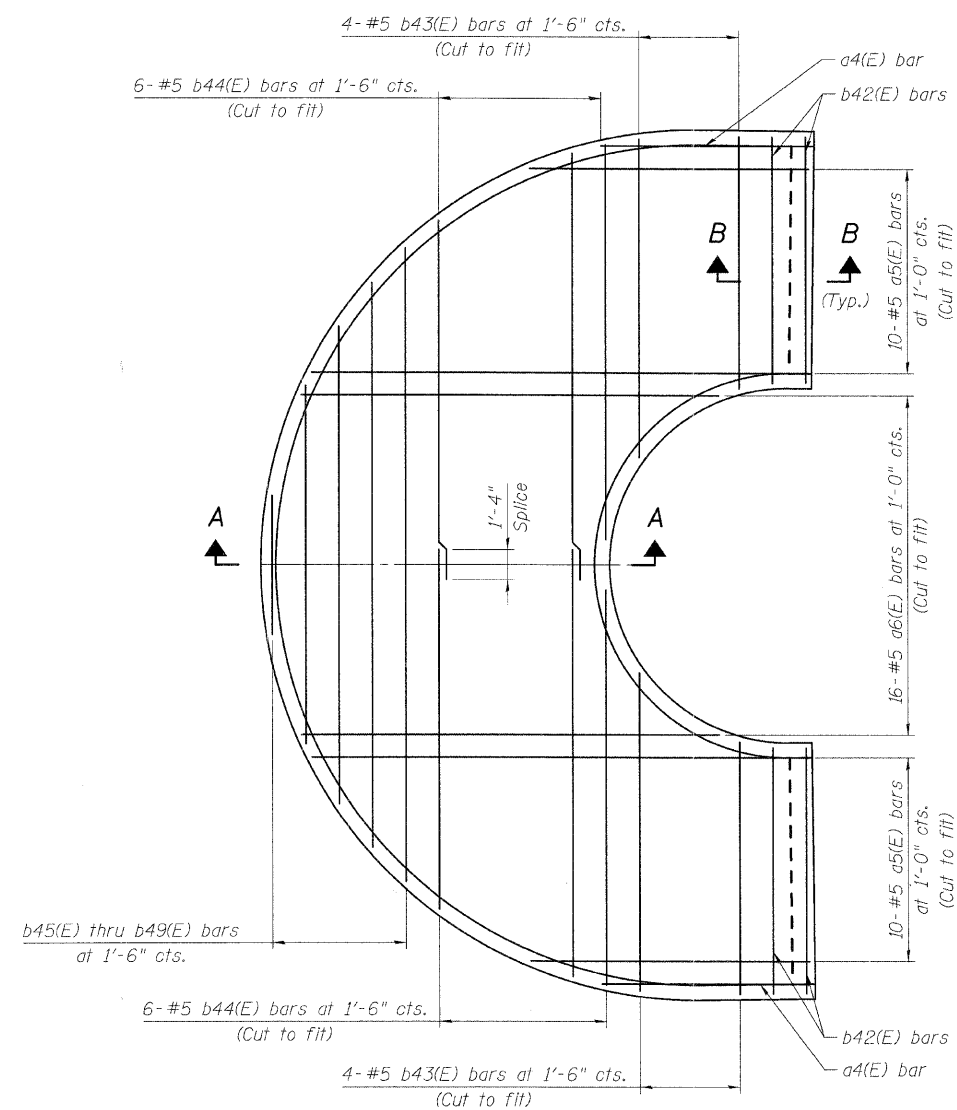
Contract #83984



SECTION B-B
UNIT 2 SLAB DETAIL AT
PIER 1 & 4 PIER CAP

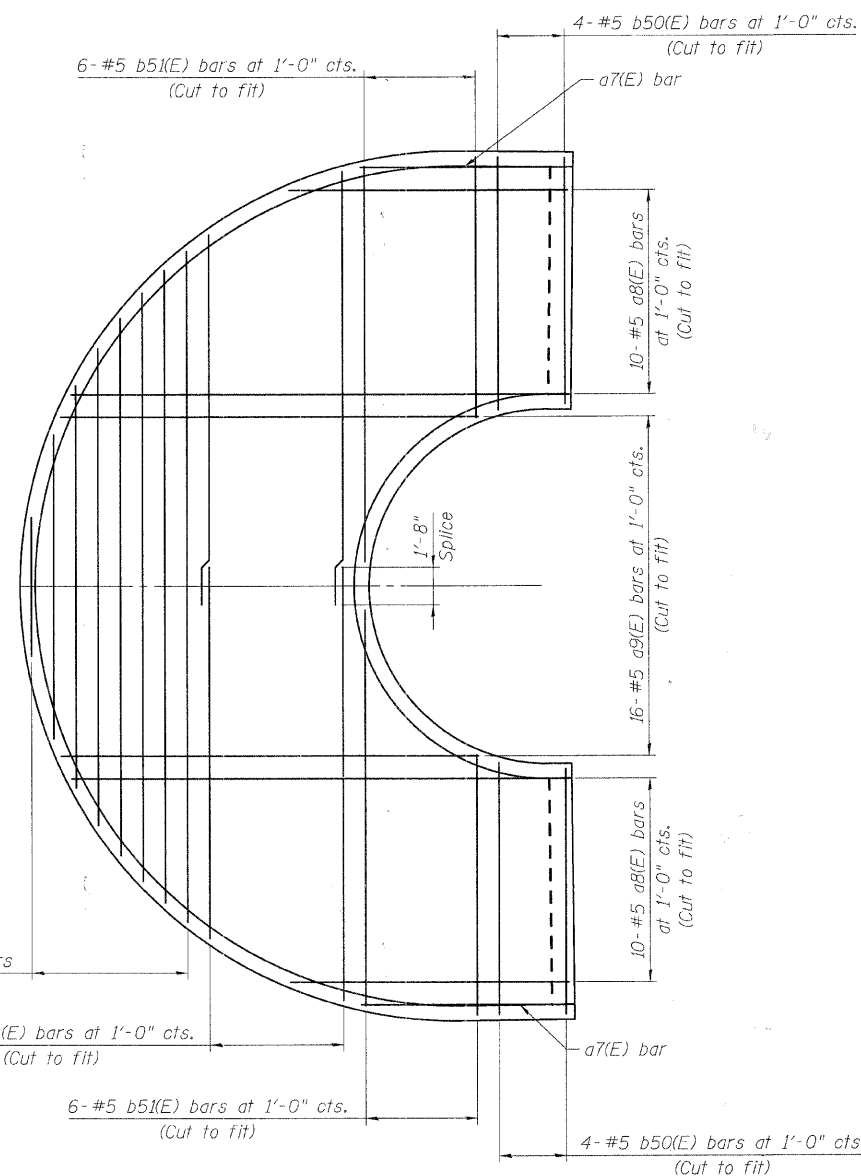
BILL OF MATERIAL

Bar	No.	Size	Length	Shape
a4(E)	2	#5	9'-2"	—
a5(E)	10	#5	37'-8"	—
a6(E)	8	#5	33'-5"	—
a7(E)	2	#5	9'-2"	—
a8(E)	10	#5	37'-8"	—
a9(E)	8	#5	33'-5"	—
a10(E)	22	#5	7'-10"	⌋
b42(E)	4	#5	10'-10"	—
b43(E)	4	#5	25'-2"	—
b44(E)	6	#5	35'-6"	—
b45(E)	1	#5	6'-2"	—
b46(E)	1	#5	15'-10"	—
b47(E)	1	#5	21'-1"	—
b48(E)	1	#5	25'-0"	—
b49(E)	1	#5	28'-0"	—
b50(E)	8	#5	11'-2"	—
b51(E)	6	#5	29'-0"	—
b52(E)	7	#5	36'-3"	—
b53(E)	1	#5	6'-2"	—
b54(E)	1	#5	13'-6"	—
b55(E)	1	#5	17'-9"	—
b56(E)	1	#5	21'-1"	—
b57(E)	1	#5	23'-9"	—
b58(E)	1	#5	26'-0"	—
b59(E)	1	#5	28'-0"	—
b60(E)	1	#5	29'-8"	—
b61(E)	4	#5	11'-0"	—
Concrete Superstructure		Cu. Yd.	2,800	
Reinforcement Bars (Epoxy Coated)		Pound	16	

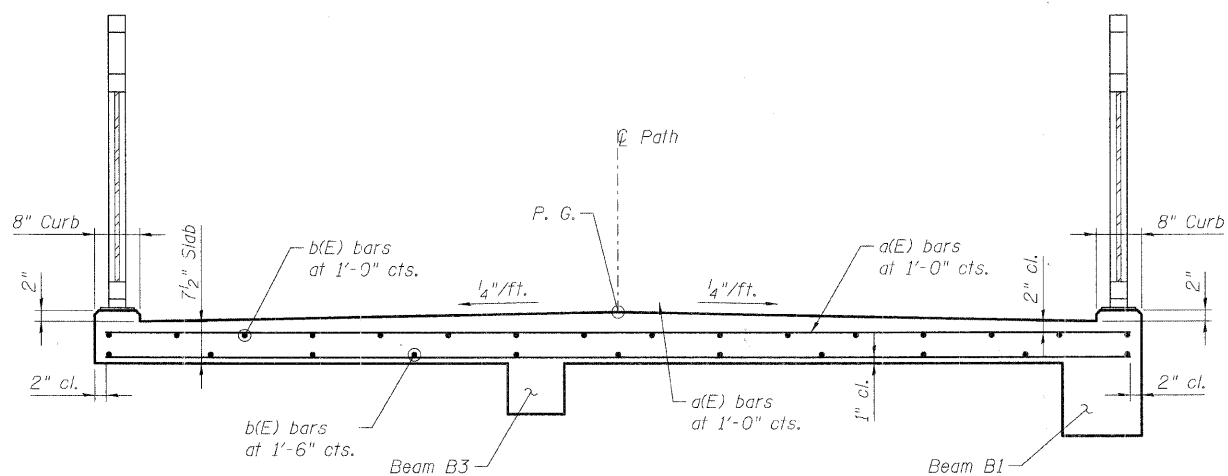


PLAN
BOTTOM OF SLAB REINFORCEMENT

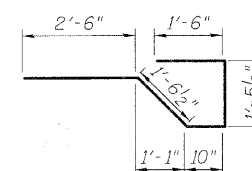
Note: Outline of supporting concrete beams not shown for clarity.



PLAN
TOP OF SLAB REINFORCEMENT



CROSS SECTION A-A
UNIT 2 SLAB



BAR a10(E)

DESIGNED	MJD
CHECKED	AEU
DRAWN	MJD
CHECKED	AEU



Robert H. Anderson & Associates, Inc.
Consulting Engineers
License No. 184-005281

DECK PLAN & DETAILS
UNIT 2
PEDESTRIAN BRIDGE OVER RANDALL ROAD
AT SILVER GLEN ROAD
FAU 2505, SECTION 94-P4008-01-BR
KANE COUNTY
STRUCTURE NO. 045-9000
DATE: OCTOBER 31, 2008