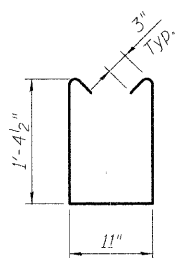
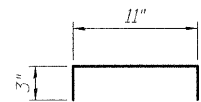


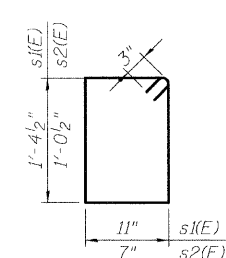
PLAN  
CONCRETE BEAM FRAMING



BAR s1(E)



BAR s2(E)

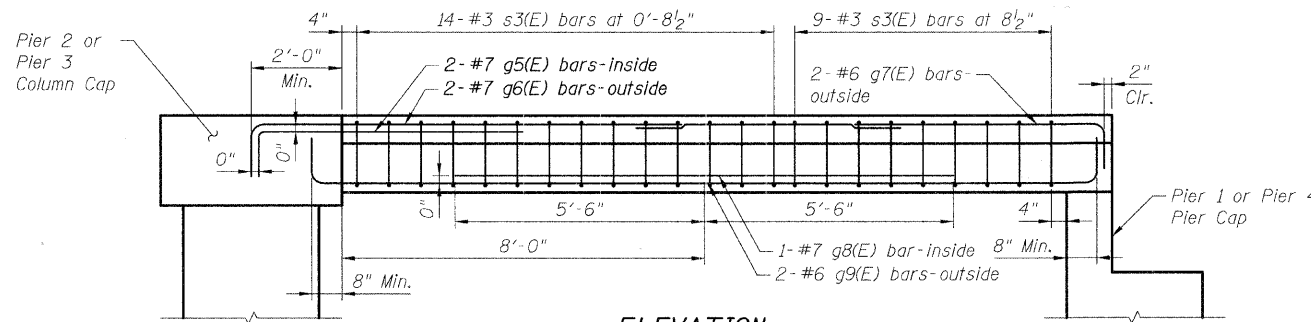


BARS s3(E) & s4(E)

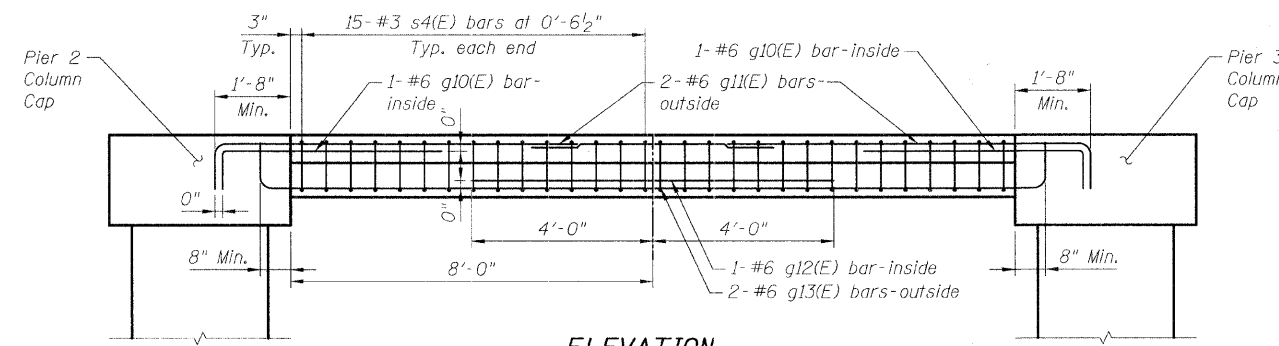
A & B DIMENSIONS

Bar	A	B
g1(E)	5'-3"	1'-2"
g2(E)	9'-7"	1'-2"
g5(E)	6'-4"	1'-2"
g6(E)	9'-10"	1'-2"
g7(E)	6'-0"	1'-0"
g10(E)	5'-0"	1'-0"
g11(E)	8'-0"	1'-0"

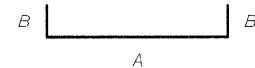
BARS g1(E), g2(E),  
g5(E), g6(E), g7(E),  
g10(E) & g11(E)



ELEVATION  
BEAM B2



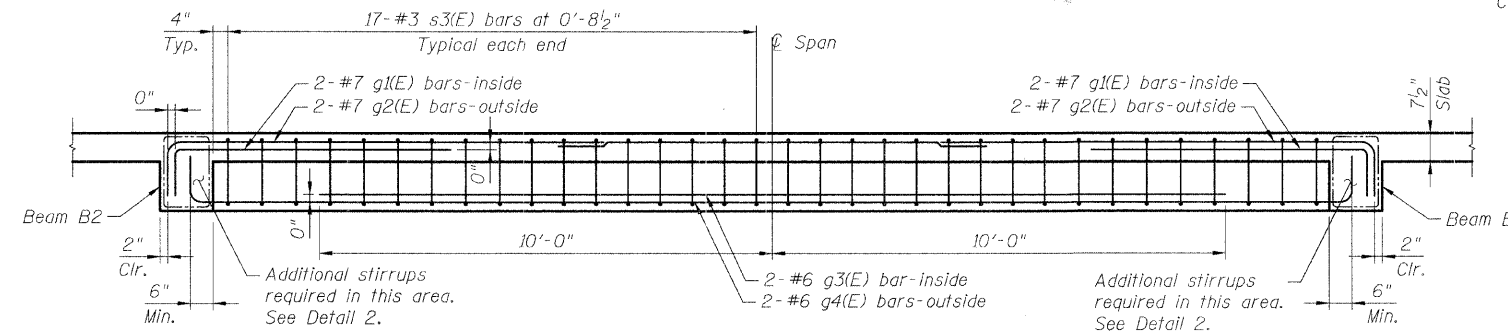
ELEVATION  
BEAM B3



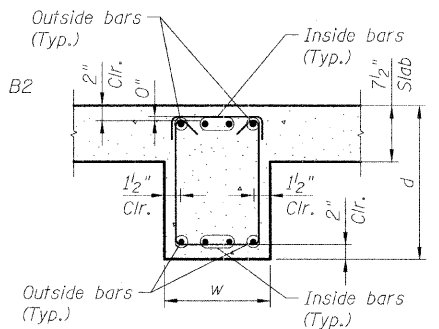
BARS g4(E),  
g9(E) & g13(E)

A & B DIMENSIONS

Bar	A	B
g4(E)	26'-2"	1'-0"
g9(E)	17'-6"	1'-0"
g13(E)	17'-4"	1'-0"



ELEVATION  
BEAM B1



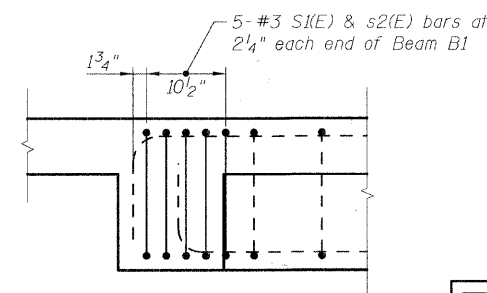
DETAIL 1

BEAM DIMENSIONS

Beam	w (in.)	d (in.)
B1	14	20 1/2
B2	14	20 1/2
B3	10	16 1/2

BILL OF MATERIAL

Bar	No.	Size	Length	Shape
g1(E)	4	#7	6'-5"	┌───┐
g2(E)	4	#7	10'-9"	┌───┐
g3(E)	2	#6	20'-0"	┌───┐
g4(E)	2	#6	28'-2"	┌───┐
g5(E)	4	#7	7'-6"	┌───┐
g6(E)	4	#7	11'-0"	┌───┐
g7(E)	4	#6	7'-0"	┌───┐
g8(E)	2	#7	11'-0"	┌───┐
g9(E)	4	#6	19'-6"	┌───┐
g10(E)	2	#6	6'-0"	┌───┐
g11(E)	4	#6	9'-0"	┌───┐
g12(E)	1	#6	8'-0"	┌───┐
g13(E)	2	#6	19'-4"	┌───┐
s1(E)	10	#3	4'-2"	┌──┐
s2(E)	10	#3	1'-5"	┌──┐
s3(E)	80	#3	5'-1"	┌──┐
s4(E)	30	#3	3'-9"	┌──┐
Concrete Superstructure			Cu. Yd.	5
Reinforcement Bars Epoxy Coated			Pound	1000



DETAIL 2

ADDITIONAL TIES AT  
BEAM B1 ENDS

DESIGNED	MJD
CHECKED	AEU
DRAWN	MJD
CHECKED	AEU

**RHA&A**  
Robert H. Anderson & Associates, Inc.  
Consulting Engineers  
License No. 184-005281

**DECK BEAMS & DETAILS  
UNIT 2**  
PEDESTRIAN BRIDGE OVER RANDALL ROAD  
AT SILVER GLEN ROAD  
FAU 2505, SECTION 94-P4008-01-BR  
KANE COUNTY  
STRUCTURE NO. 045-9000  
DATE: OCTOBER 31, 2008