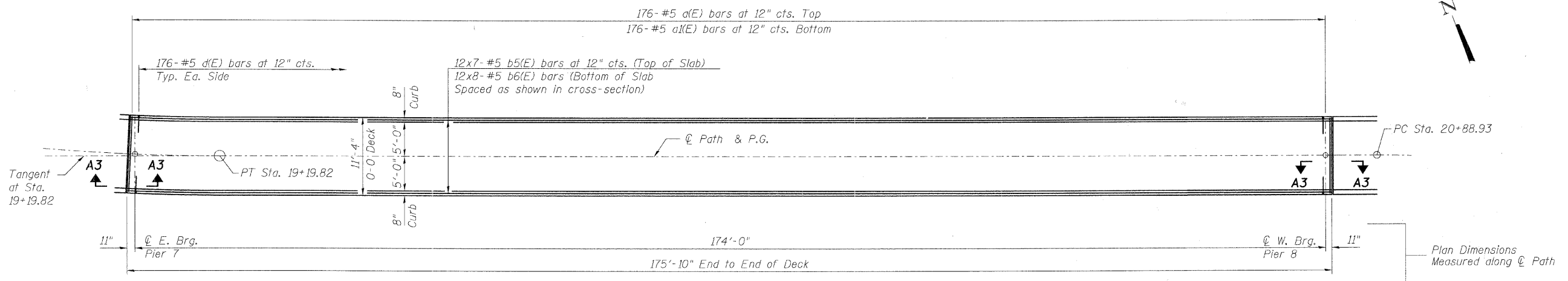
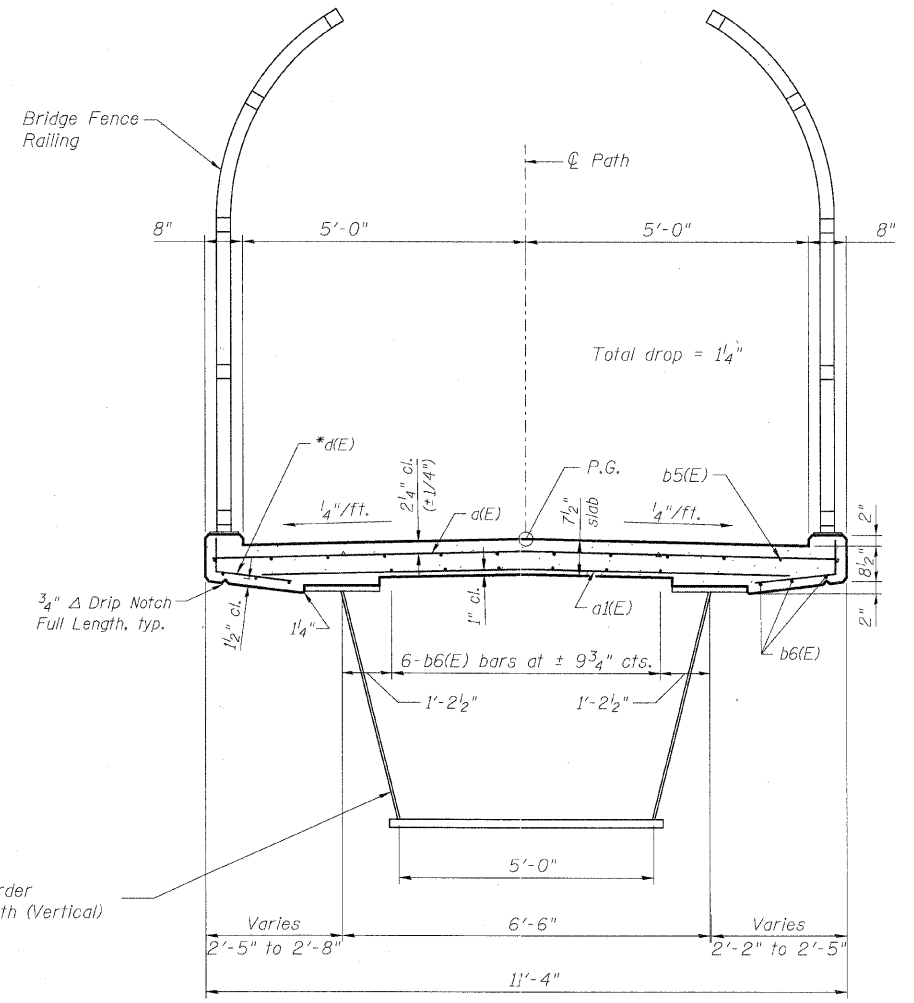


Contract #83984



PLAN
(Unit 4)

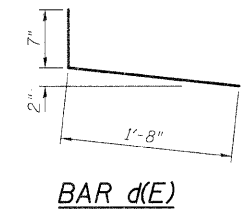


CROSS SECTION
(Unit 4 - Looking East)
* Cut to fit in field

UNIT 4
BILL OF MATERIAL

Bar	No.	Size	Length	Shape
d(E)	176	#5	11'-0"	—
a(E)	176	#5	10'-4"	—
b5(E)	84	#5	27'-0"	—
b6(E)	96	#5	23'-11"	—
d(E)	352	#5	2'-5"	┘
Concrete Superstructure			Cu. Yd.	52.8
Reinforcement Bars, Epoxy Coated			Pound	9560

NOTES:
For section A3-A3 see Sheet S-14.
Bars indicated thus 20 x 3-#5 etc. indicates 20 lines of bars with 3 lengths per line.



DESIGNED	MJD
CHECKED	AEU
DRAWN	MJD
CHECKED	AEU

RHAA
Robert H. Anderson & Associates, Inc.
Consulting Engineers
License No. 184-005281

DECK PLAN & CROSS SECTION
UNIT 4
PEDESTRIAN BRIDGE OVER RANDALL ROAD
AT SILVER GLEN ROAD
FAU 2505, SECTION 94-P4008-01-BR
KANE COUNTY
STRUCTURE NO. 045-9000
DATE: OCTOBER 31, 2008