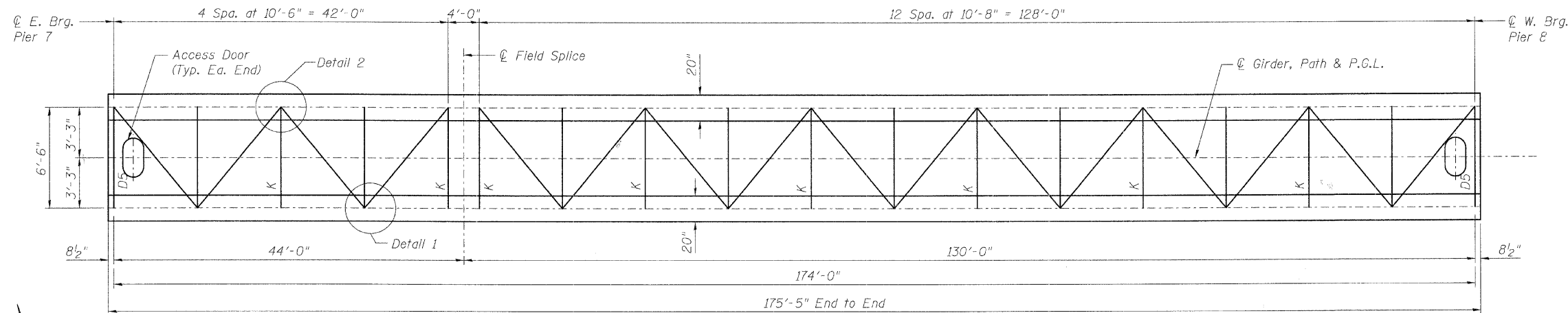
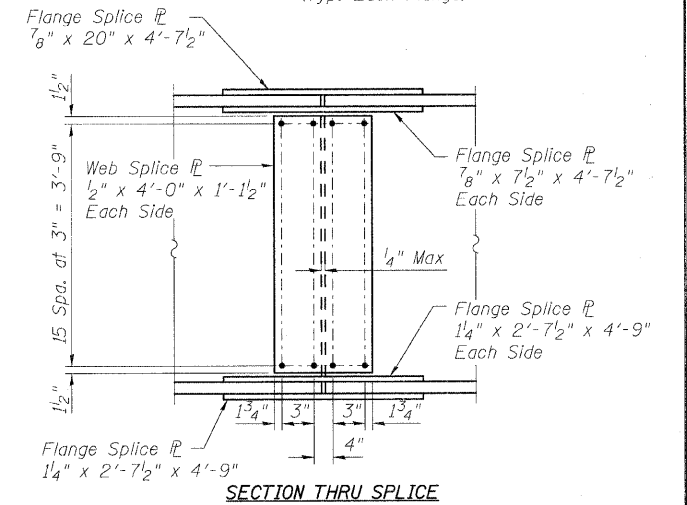
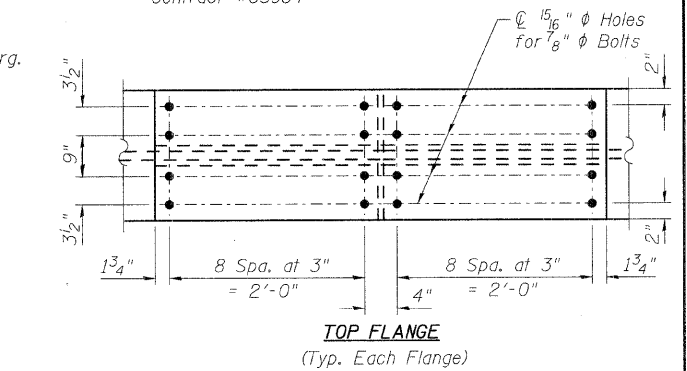


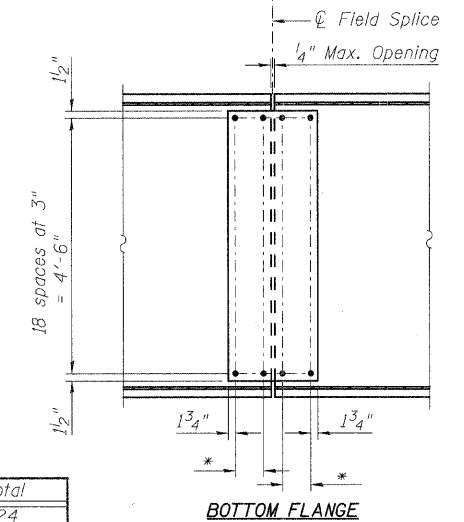
Contract #83984



BOX GIRDER PLAN
(Unit 4)



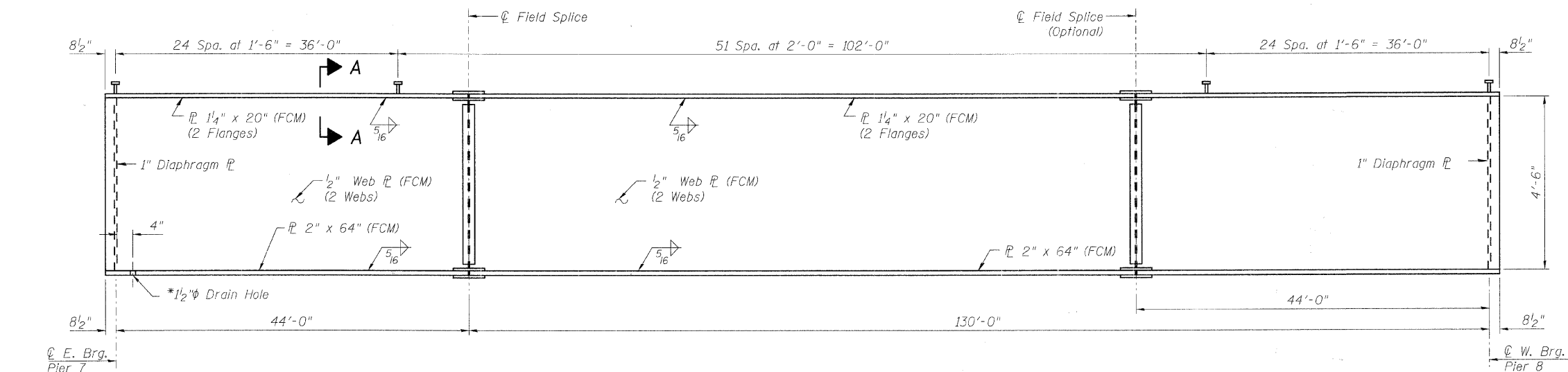
SECTION THRU SPLICE



BOTTOM FLANGE

* 4 spaces at 3" = 1'-0"

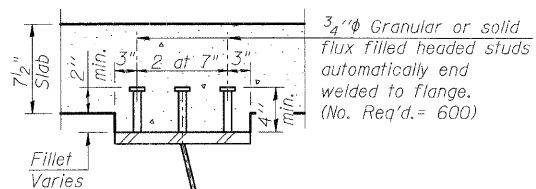
FIELD SPLICE DETAIL



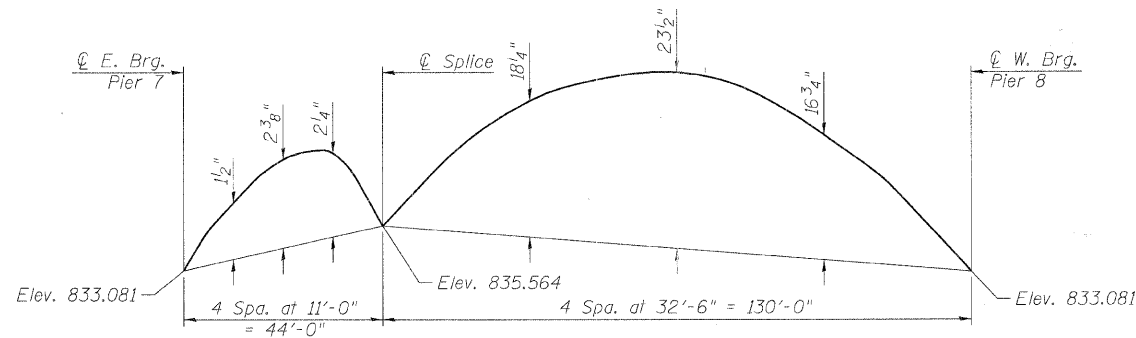
BOX GIRDER ELEVATION

"FCM" Indicates Fracture Critical Membrane

Mastic* shall be applied to the bottom flange between the drain holes and the plate diaphragm and placed such that water cannot run past the drain holes and pond-up against the plate diaphragms. Slope to drain. #10 galvanized 1/4" x 1/4" steel wire mesh shall be attached to the inside of the bottom flange plate with a suitable sealant to be approved by the Engineer. Cost included with the pay item "FURNISHING AND ERECTING STRUCTURAL STEEL".



SECTION A-A



CAMBER DIAGRAM

BILL OF MATERIAL

Item	Unit	Total
Stud Shear Connectors	Each	624

NOTES:

All steel shall be AASHTO M 270 Grade 50W. All splice plates shall meet the requirements for Fracture Critical Members (FCM).

DESIGNED	MJD
CHECKED	AEU
DRAWN	MJD
CHECKED	AEU



Robert H. Anderson & Associates, Inc.
Consulting Engineers
License No. 184-005281

STRUCTURAL STEEL UNIT 4

PEDESTRIAN BRIDGE OVER RANDALL ROAD
AT SILVER GLEN ROAD
FAU 2505, SECTION 94-P4008-01-BR
KANE COUNTY
STRUCTURE NO. 045-9000

DATE: OCTOBER 31, 2008