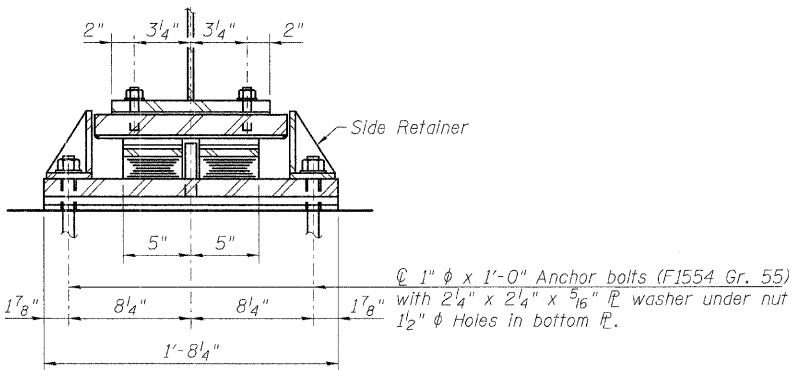
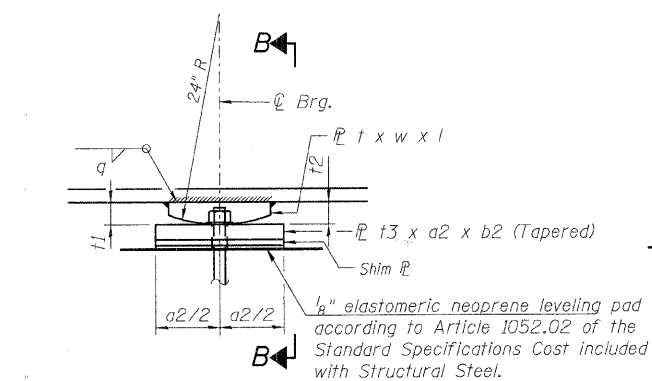


ELEVATION AT PIER 7W

TYPE III ELASTOMERIC EXP. BRG.

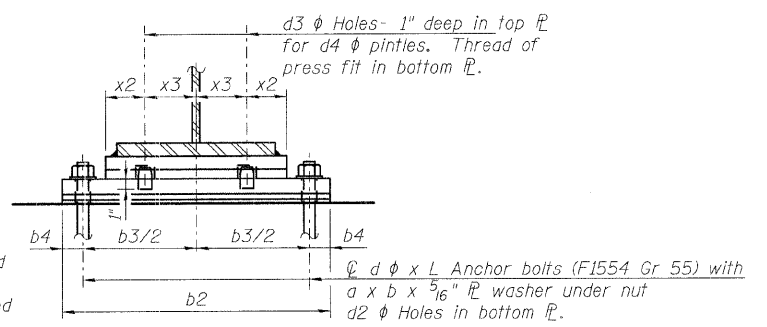


SECTION A-A

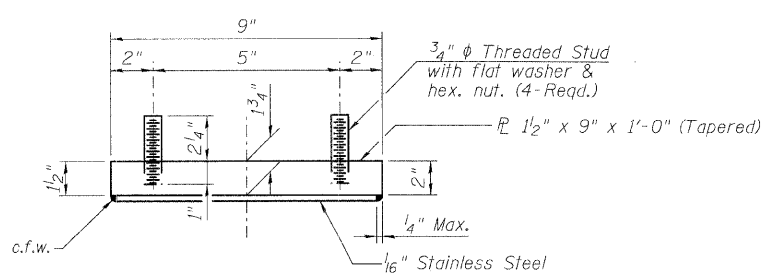


ELEVATION AT PIER 1, PIER 4 & PIER 10

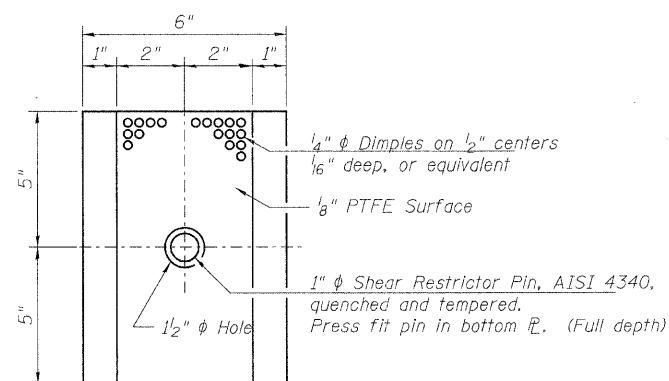
FIXED BEARING



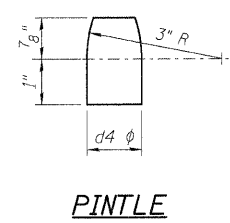
SECTION B-B



TOP BEARING ASSEMBLY



PLAN-PTFE ELASTOMERIC BRG.



NOTES:

The structural steel plates of the Bearing Assembly shall conform to the requirements of AASHTO M270 Grade 50W.

The 1/8 in. adjusting shims shall be provided for each bearing in addition to all other plates or shims and placed as shown on bearing details.

All embedded and separate bearing plates, side retainers, anchor bolts, nuts, washers and pintles shall be galvanized according to AASHTO M232 as applicable.

H.S. bolts in bearing assembly shall be galvanized according to AASHTO M298 Class 50.

Anchor bolts shall be ASTM F1554 all-thread (or an Engineer-approved alternate material of the grade(s) and diameter(s) specified. ASTM A307 Grade C anchor bolts may be used in lieu of ASTM F1554 Grade 36 (Fy=36ksi). The corresponding specified grade of AASHTO M314 anchor bolts may be used in lieu of ASTM F1554.

Anchor bolts at fixed bearings may be either cast in place or installed in holes drilled after the supported member is in place.

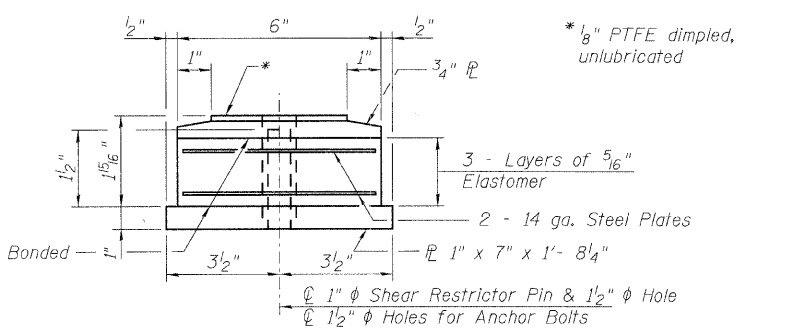
Anchor bolts for Type III bearings shall be placed in holes drilled through the bottom bearing plate after members are in place. Side retainers shall be placed after bolts are installed.

Drilled and set anchor bolts shall be installed according to Article 521.06 of the Standard Specifications.

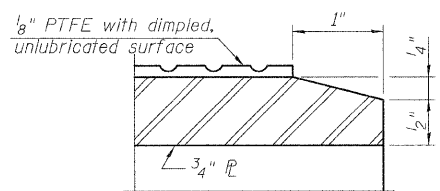
Side retainers and other steel members required for the bearing assembly shall be included in the cost of Elastomeric Bearing Assembly, Type III.

The 1/8" PTFE sheet shall be bonded directly to the top steel plate with a two-component, medium viscosity epoxy resin, conforming to the requirements of the Federal Specification MMM-A-134, Type I. The bond agent shall be applied on the full area of the contact surfaces.

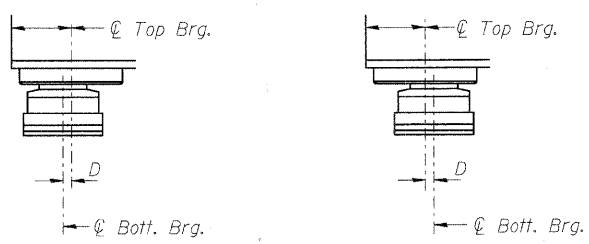
Bonding of 1/8" PTFE sheet during vulcanizing process will be permitted provided the process and method of adjusting assembly height is approved by the Engineer.



BOTTOM BEARING ASSEMBLY

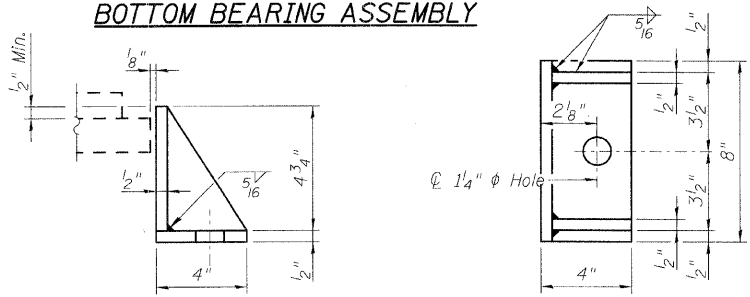


SECTION THRU PTFE



SETTING ANCHOR BOLTS AT EXP. BRG.

D=1/8" per each 100' of expansion for every 15° temp. change from the normal temp. of 50° F.



SIDE RETAINER

FIXED BEARINGS

TABLE OF DIMENSIONS

(All dimensions are in inches unless otherwise noted)

| Location | No. | w | l | t1 | t2 | t | a2 | b2 | t3 | b3 | b4 | d | L | a | b | d2 | d3 | d4 | x2 | x3 | q |
|----------|-----|---|--------|-------|-------|-------|----|--------|-------|----|-------|---|----|-------|-------|-------|-------|-------|----|-------|------|
| Pier 1 | 2 | 9 | 11 1/2 | 1 | 1 1/2 | 1 1/4 | 9 | 18 1/2 | 1 | 15 | 1 3/4 | 1 | 12 | 2 1/4 | 2 1/4 | 1 1/2 | 1 3/8 | 1 1/4 | 3 | 2 3/4 | 5/16 |
| Pier 4 | 2 | 9 | 11 1/2 | 1 | 1 1/2 | 1 1/4 | 9 | 18 1/2 | 1 | 15 | 1 3/4 | 1 | 12 | 2 1/4 | 2 1/4 | 1 1/2 | 1 3/8 | 1 1/4 | 3 | 2 3/4 | 5/16 |
| Pier 10 | 2 | 9 | 11 1/2 | 1 3/8 | 1 3/4 | 1 1/2 | 9 | 18 1/2 | 1 5/8 | 15 | 1 3/4 | 1 | 12 | 2 1/4 | 2 1/4 | 1 1/2 | 1 3/8 | 1 1/4 | 3 | 2 3/4 | 7/16 |

BILL OF MATERIAL

| Item | Unit | Total |
|---------------------------------------|------|-------|
| Elastomeric Bearing Assembly Type III | Each | 2 |
| Anchor Bolts 1" P | Each | *18 |

* Includes quantity for Pier 7(E). See Sheet S-22 for Pier 7(E) bearing details.

| | |
|----------|-----|
| DESIGNED | MJD |
| CHECKED | AEU |
| DRAWN | MJD |
| CHECKED | AEU |

RHA&A

Robert H. Anderson & Associates, Inc.
Consulting Engineers
License No. 184-005281

BEARING DETAILS II

PEDESTRIAN BRIDGE OVER RANDALL ROAD
AT SILVER GLEN ROAD
FAU 2505, SECTION 94-P4008-01-BR
KANE COUNTY
STRUCTURE NO. 045-9000

DATE: OCTOBER 31, 2008