

Benchmark: Top of nut on fire hydrant located at the northwest corner of the intersection of Randall Road and Silver Glen Road. (Elev. 809.17)

Existing Structure: None

Salvage: None

DESIGN SPECIFICATIONS
2002 AASHTO with Interim Specifications

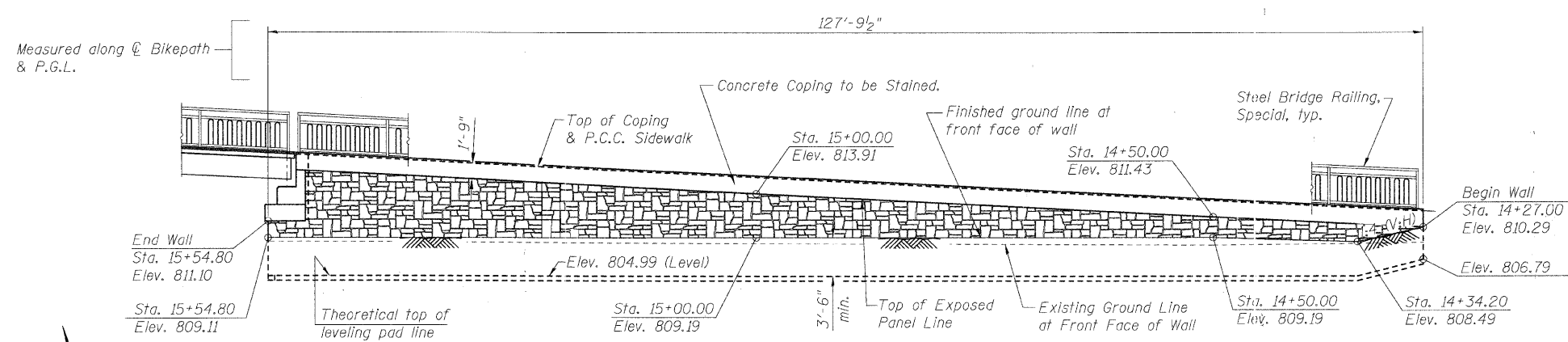
LOADING H5 & PEDESTRIAN
85 psf Pedestrian Loading
MSE wall shall be designed for a min. surcharge of 85 psf and an equivalent fluid pressure of 50 psf.

DESIGN STRESSES
FIELD UNITS

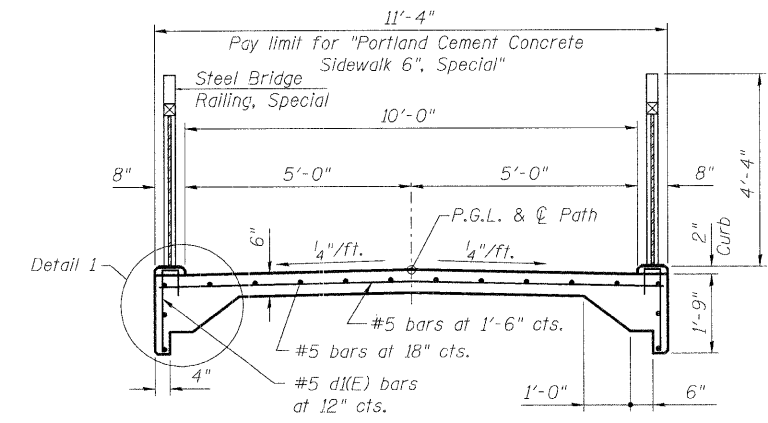
$f'_c = 3,500$ psi
 $f_y = 60,000$ psi (reinforcement)

PRECAST UNITS

$f'_c = 4,500$ psi (Precast Panels)

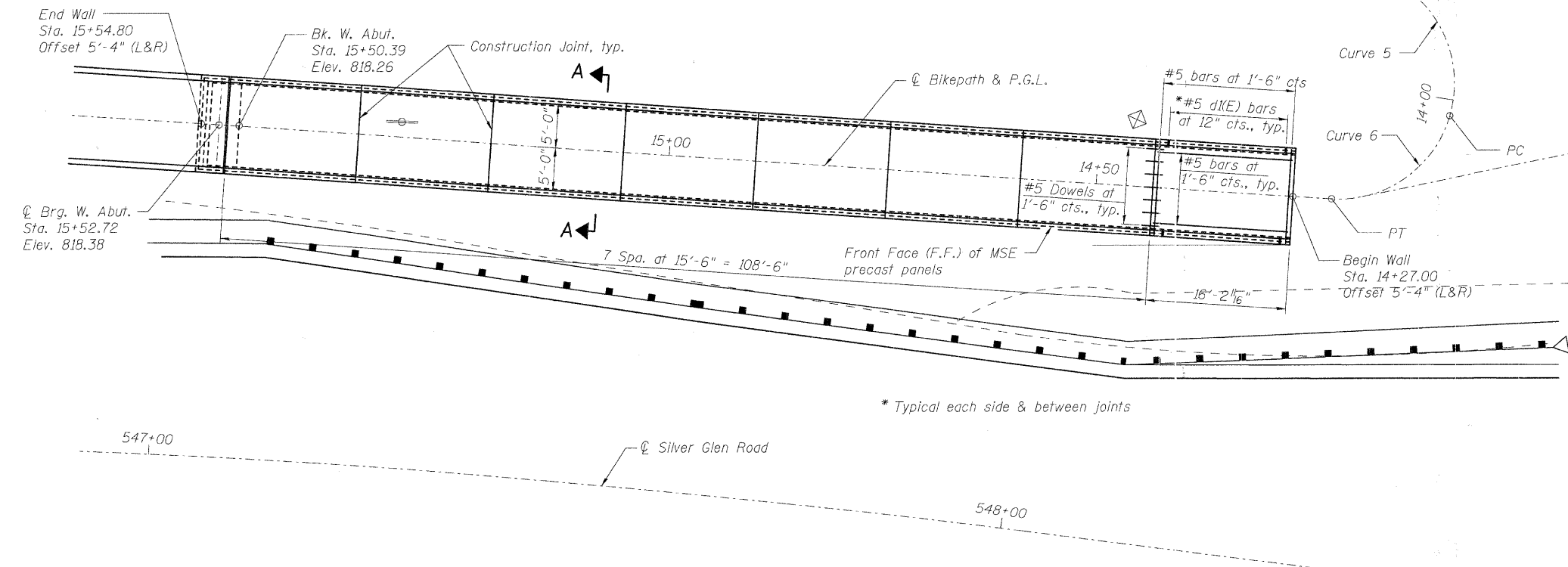
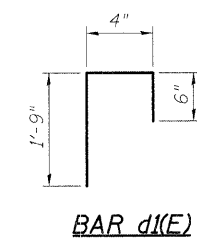


SOUTHWEST MSE WALL ELEVATION
(Northwest Wall Similar)
(Looking at Front Face of Wall)



SECTION A-A

(Portland Cement Concrete Sidewalk 6 inch, Special)
Cost of Reinforcement Bars, Epoxy Coated is included in the pay item "Portland Cement Concrete Sidewalk 6", Special.



WEST MSE WALL PLAN

Note:
Wall offsets are measured from \odot bikepath to front face of precast panels.

BILL OF MATERIAL

Item	Unit	Total
Mechanically Stabilized Earth Retaining Wall	Sq. Ft.	2,207
Structure Excavation	Cu. Yd.	232
Concrete Sealer	Sq. Ft.	191
Portland Cement Concrete Sidewalk 6", Special	Sq. Ft.	1,414
Staining Concrete Structures	Sq. Yd.	53

NOTES:

- All elevations shown are along PGL.
- The Contractor will be responsible to design and construct MSE walls according to IDOT Guide Bridge Special Provision "Mechanically Stabilized Earth Retaining Walls".
- See sheet S-37 for Architectural Details.
- See Sheet S-36 for Detail 1.

DESIGNED	MJD
CHECKED	AEU
DRAWN	MJD
CHECKED	AEU

RHA&A
Robert H. Anderson & Associates, Inc.
Consulting Engineers
License No. 184-005281

WEST MSE WALL PLAN AND ELEVATION
PEDESTRIAN BRIDGE OVER RANDALL ROAD AT SILVER GLEN ROAD
FAU 2505, SECTION 94-P4008-01-BR
KANE COUNTY
STRUCTURE NO. 045-9000
DATE: OCTOBER 31, 2008