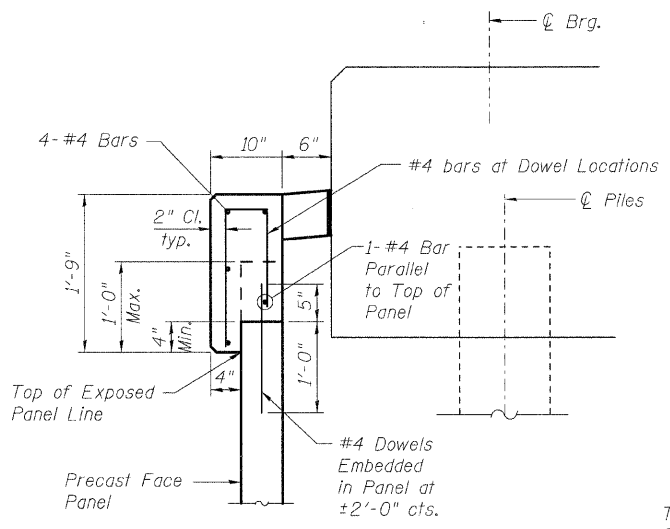


**PLAN AT ABUTMENTS**

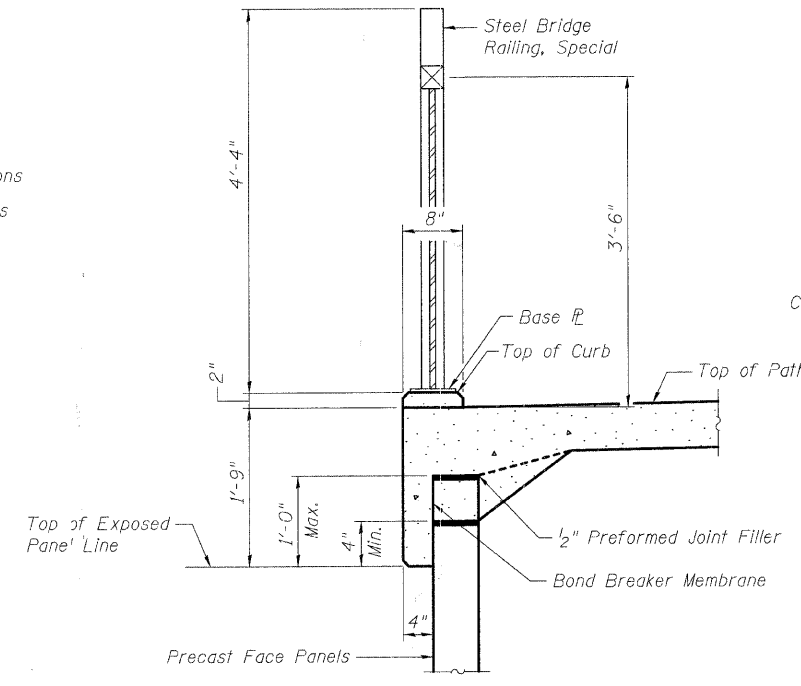
\*See Section Through Abutments, This Sheet



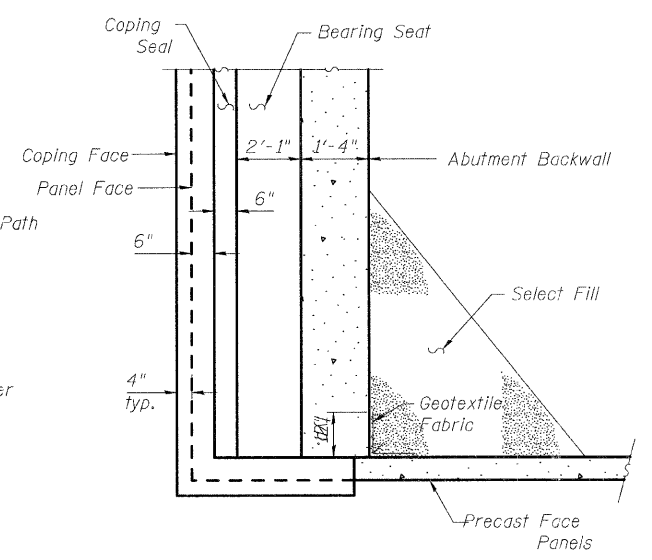
**SECTION B-B  
CAST IN PLACE COPING DETAIL**

All reinforcement shall be epoxy coated

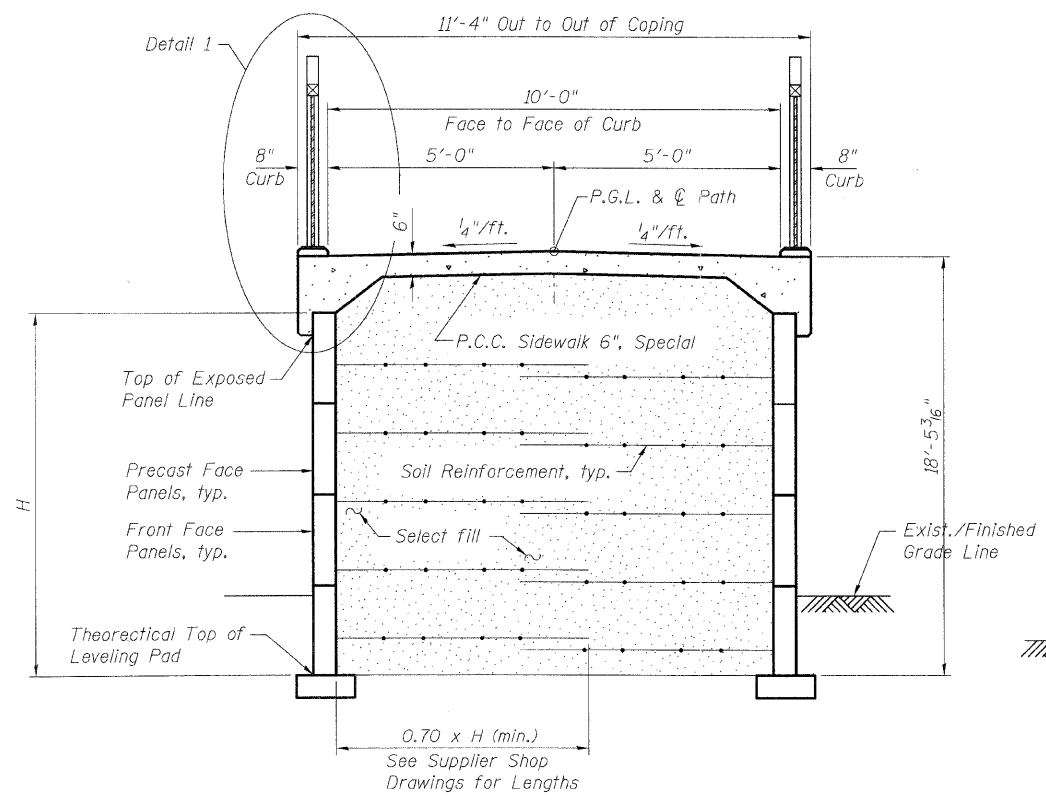
Note: Cost of Coping, including epoxy coated reinforcement bars, PJF and bond breaker is included in the pay item "Mechanically Stabilized Earth retaining Wall".



**DETAIL 1**

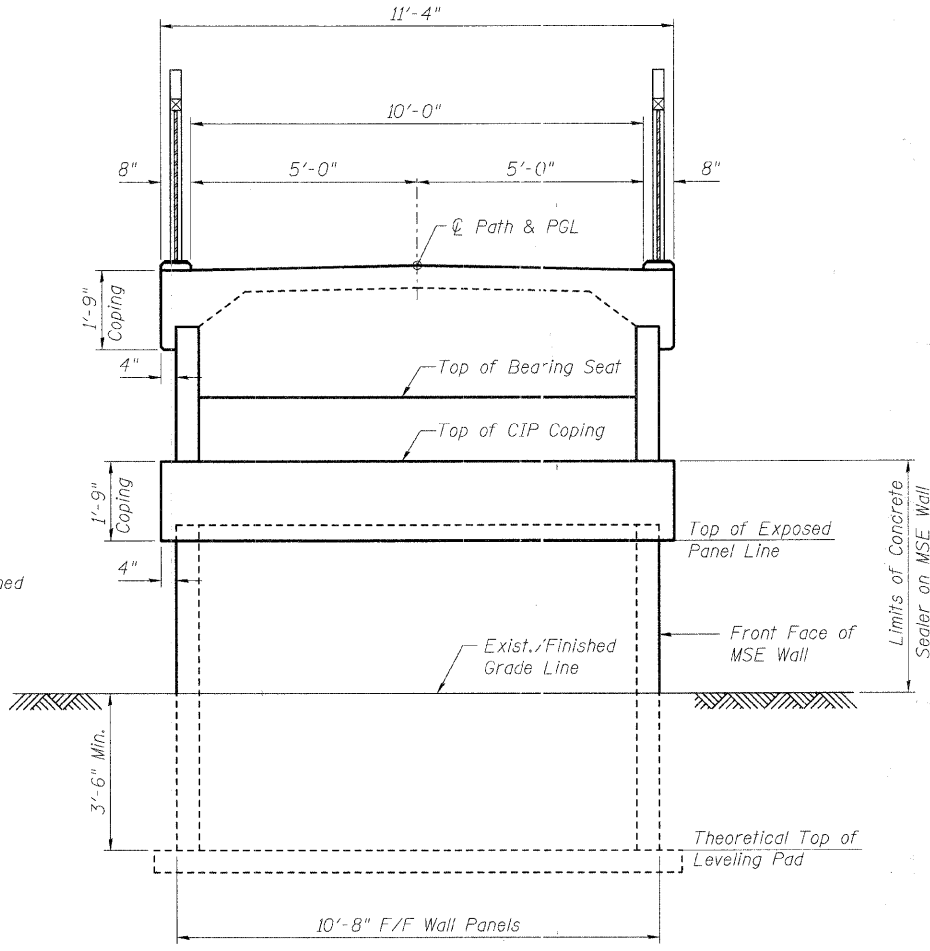


**SECTION A-A**



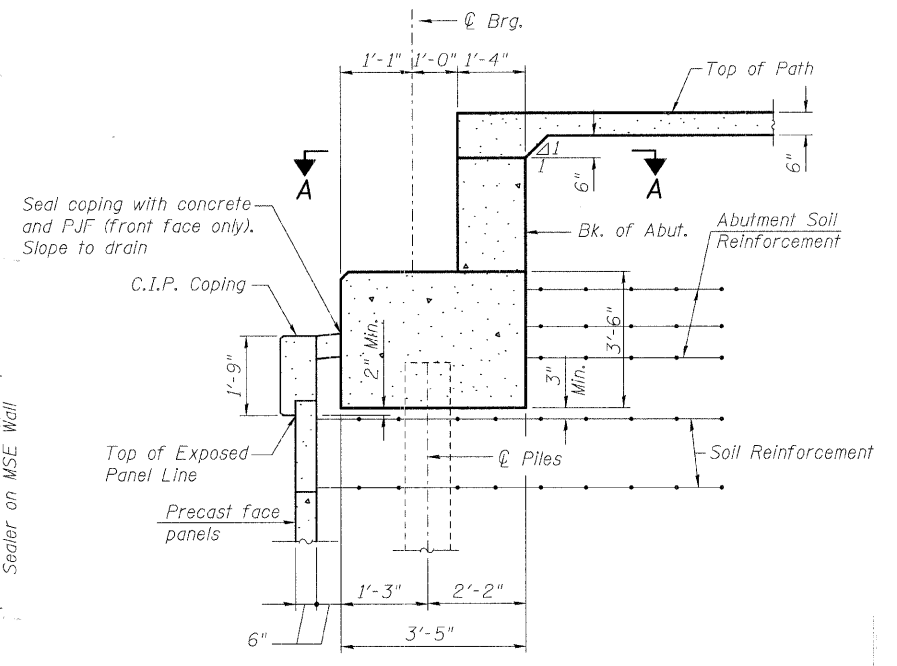
**SECTION THROUGH MSE WALL**

Note: Wall Supplier and Contractor must space soil reinforcement to miss piles.



**ABUTMENT ELEVATION**

Showing MSE Wall Details



**SECTION THROUGH ABUTMENTS**

See CIP Coping Detail, This Sheet

DESIGNED	MJD
CHECKED	AEU
DRAWN	MJD
CHECKED	AEU

**RHA&A**  
Robert H. Anderson & Associates, Inc.  
Consulting Engineers  
License No. 184-005281

**MSE WALL DETAILS**  
PEDESTRIAN BRIDGE OVER RANDALL ROAD  
AT SILVER GLEN ROAD  
FAU 2505, SECTION 94-P4008-01-BR  
KANE COUNTY  
STRUCTURE NO. 045-9000  
DATE: OCTOBER 31, 2008