

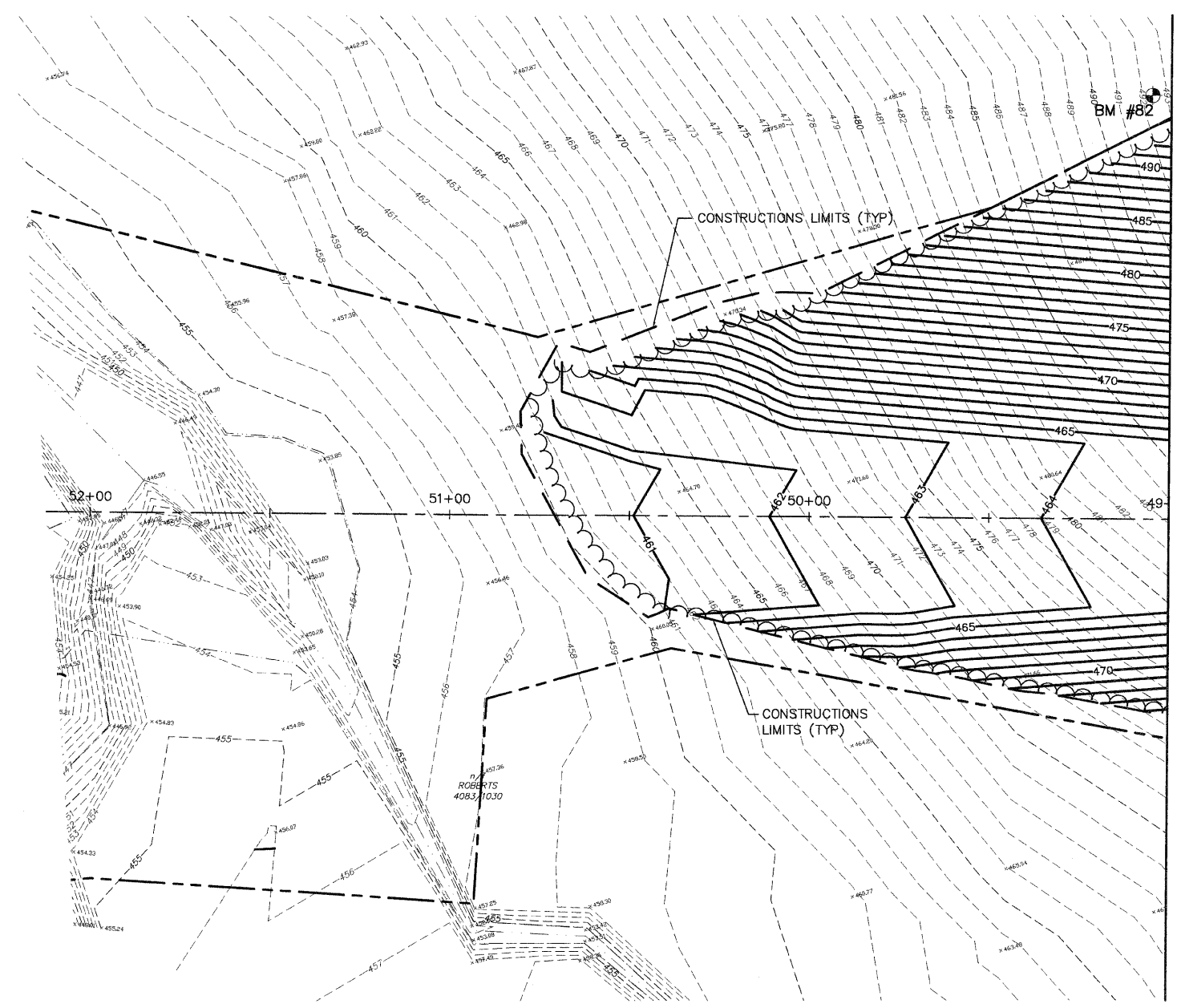


F&P ROUTE	SECTION	COUNTY	TOTAL SHEETS	SHEET NO.
05-00016-03-BR	MADISON	129	26	
STA. 49+00		TO STA. 54+50		
CONTRACT NO.: 97351				
ADDENDUM #1 01-02-2009				

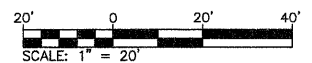
DATE	BY	REVISION
7/27/09	J.T.F.	1
7/27/09		2
		3
		4
		5
		6
		7
		8
		9
		10
		11
		12
		13
		14
		15
		16
		17
		18
		19
		20
		21
		22
		23
		24
		25
		26
		27
		28
		29
		30
		31
		32
		33
		34
		35
		36
		37
		38
		39
		40
		41
		42
		43
		44
		45
		46
		47
		48
		49
		50
		51
		52
		53
		54
		55
		56
		57
		58
		59
		60
		61
		62
		63
		64
		65
		66
		67
		68
		69
		70
		71
		72
		73
		74
		75
		76
		77
		78
		79
		80
		81
		82
		83
		84
		85
		86
		87
		88
		89
		90
		91
		92
		93
		94
		95
		96
		97
		98
		99
		100

**BENCHMARK DATUM**

- BM 82  
PIN W/CAP  
STA. 49+05.25, 117.15 RIGHT  
ELEV. 492.68
- BM 1039  
TRAVERSE PIN  
STA. 52+60.62, 22.35 LEFT  
ELEV. 459.88



MATCH LINE, STATION 49+00



REVISED 1-6-09

REVISIONS	
NAME	DATE

ILLINOIS DEPARTMENT OF TRANSPORTATION

**GRADING PLAN**  
**STA. 49+00 TO 54+50**

FAU ROUTE 8959  
SECTION 05-00016-03-BR  
COUNTY MADISON

DRAWN BY: R.A.W.