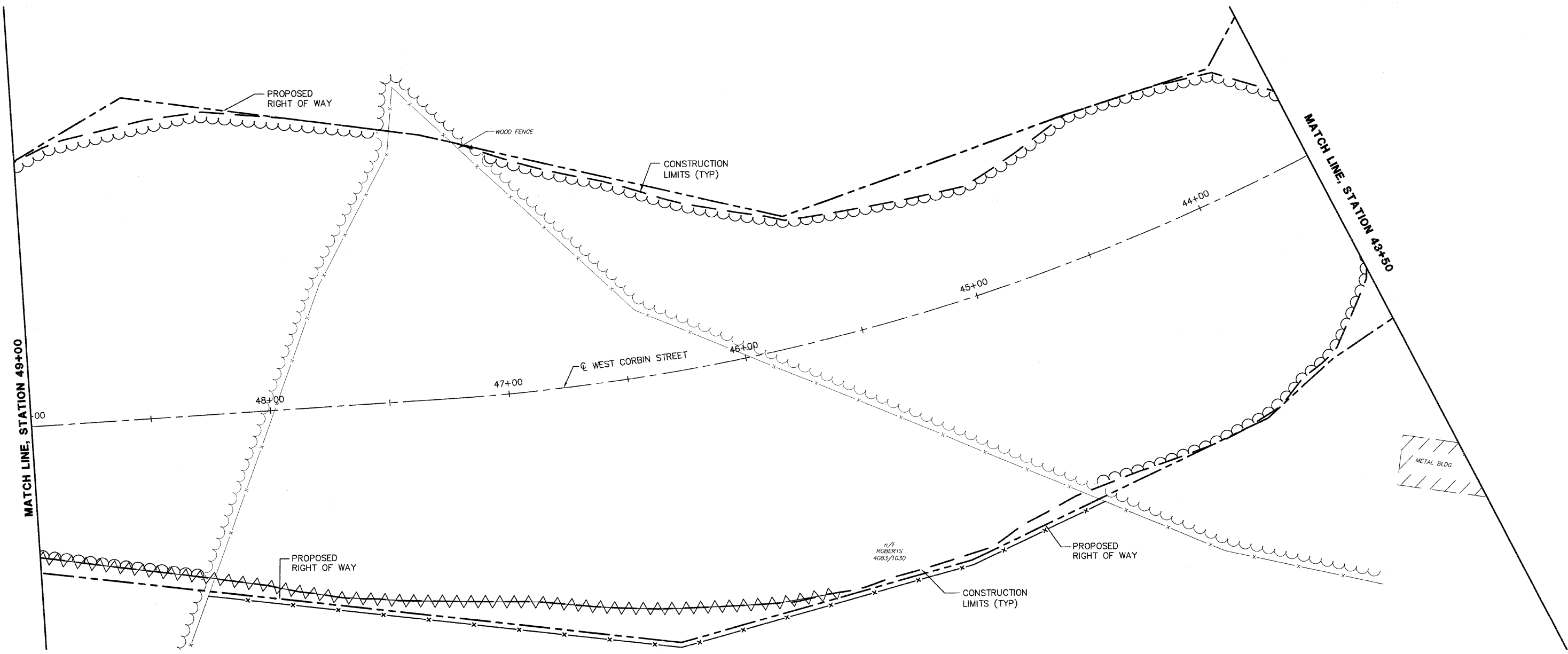


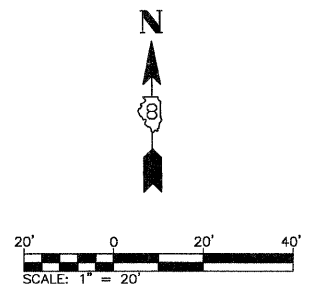
FAU ROUTE	SECTION	COUNTY	TOTAL SHEETS	SHEET NO.
	05-00016-03-BR	MADISON	129	32
STA.	43+50	TO STA.	49+00	
CONTRACT NO.: 97351				
ADDENDUM #1 01-02-2009				

PLAN	DATE
NO.	1/27/06
BY	J.T.F.
CHECKED	E.S.C.
DATE	1/27/06
FILE NAME	



- LEGEND:**
- >--->---> EXISTING STORM SEWER
  - <---<---< EXISTING SANITARY SEWER
  - ⊙ EXISTING SANITARY MANHOLE
  - CONSTRUCTION LIMITS
  - >--->---> PROPOSED STORM SEWER
  - <---<---< PROPOSED SANITARY SEWER
  - PROPOSED DITCH
  - PROPOSED CURB INLET
  - ⊙ PROPOSED STORM MANHOLE
  - PROPOSED SANITARY MANHOLE
  - ◇ PROPOSED DITCH CHECK (TEMPORARY)
  - PROPOSED DITCH FLOW
  - ▲▲▲ PERIMETER EROSION BARRIER
  - ◇ PROPOSED INLET AND PIPE PROTECTION

REVISED 1-6-09



REVISIONS	
NAME	DATE

ILLINOIS DEPARTMENT OF TRANSPORTATION  
**EROSION AND SEDIMENT CONTROL PLANS—WEST CORBIN STREET**  
 FAU ROUTE 8959  
 SECTION 05-00016-03-BR  
 COUNTY MADISON  
 DRAWN BY: R.A.W.