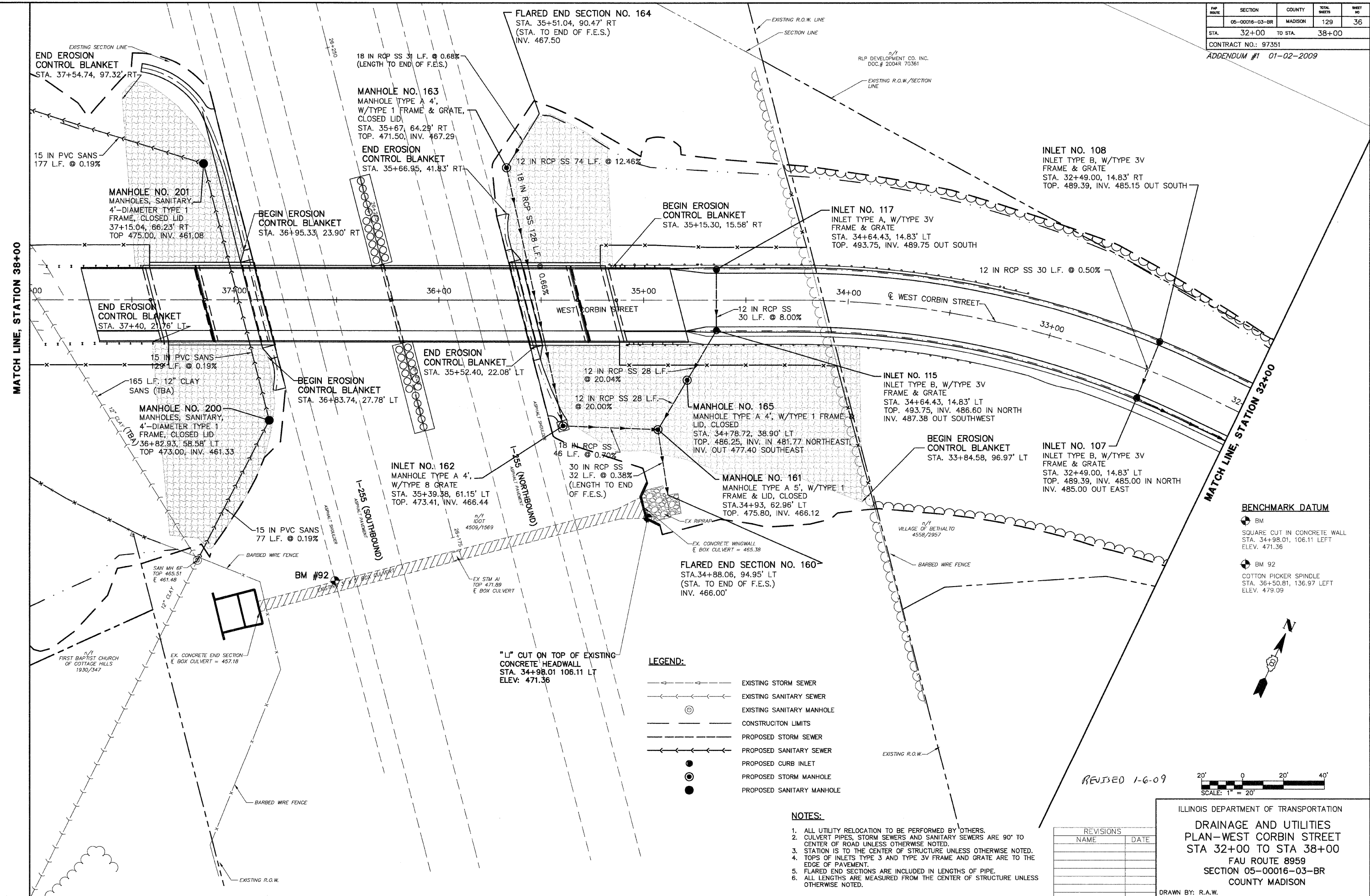


PAP ROUTE	SECTION	COUNTY	TOTAL SHEETS	SHEET NO.
05-00016-03-BR	MADISON	129	36	
STA. 32+00	TO STA. 38+00			
CONTRACT NO.: 97351				
ADDENDUM #1 01-02-2009				

DATE	BY
7/27/06	R.F.W.
7/27/06	R.F.W.
7/27/06	R.F.W.
7/27/06	R.F.W.
7/27/06	R.F.W.
7/27/06	R.F.W.
7/27/06	R.F.W.
7/27/06	R.F.W.
7/27/06	R.F.W.



BENCHMARK DATUM

- BM SQUARE CUT IN CONCRETE WALL STA. 34+98.01, 106.11 LEFT ELEV. 471.36
- BM 92 COTTON PICKER SPINDLE STA. 36+50.81, 136.97 LEFT ELEV. 479.09

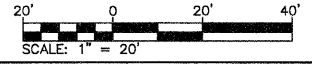
LEGEND:

	EXISTING STORM SEWER
	EXISTING SANITARY SEWER
	EXISTING SANITARY MANHOLE
	CONSTRUCTION LIMITS
	PROPOSED STORM SEWER
	PROPOSED SANITARY SEWER
	PROPOSED CURB INLET
	PROPOSED STORM MANHOLE
	PROPOSED SANITARY MANHOLE

- NOTES:**
- ALL UTILITY RELOCATION TO BE PERFORMED BY OTHERS.
 - CULVERT PIPES, STORM SEWERS AND SANITARY SEWERS ARE 90° TO CENTER OF ROAD UNLESS OTHERWISE NOTED.
 - STATION IS TO THE CENTER OF STRUCTURE UNLESS OTHERWISE NOTED.
 - TOPS OF INLETS TYPE 3 AND TYPE 3V FRAME AND GRATE ARE TO THE EDGE OF PAVEMENT.
 - FLARED END SECTIONS ARE INCLUDED IN LENGTHS OF PIPE.
 - ALL LENGTHS ARE MEASURED FROM THE CENTER OF STRUCTURE UNLESS OTHERWISE NOTED.

REVISED 1-6-09

REVISIONS	
NAME	DATE



ILLINOIS DEPARTMENT OF TRANSPORTATION
DRAINAGE AND UTILITIES
PLAN—WEST CORBIN STREET
STA 32+00 TO STA 38+00
 FAU ROUTE 8959
 SECTION 05-00016-03-BR
 COUNTY MADISON
 DRAWN BY: R.A.W.