

PART OF THE SE 1/4 OF SECTION 2, T5N, R9W, OF THE 3RD PM, MADISON COUNTY, ILLINOIS

BEARINGS SHOWN HEREON ARE BASED ON AN ASSUMED BEARING OF N00°20'14"W ALONG THE WEST LINE OF THE SE 1/4 OF SECTION 2.

STATE OF ILLINOIS)
) SS
COUNTY OF)

I, DALE L. WOOLARD, AN ILLINOIS PROFESSIONAL LAND SURVEYOR, CERTIFY THAT I HAVE SURVEYED THE PLAT OF HIGHWAY SHOWN HEREON AND THAT THIS PROFESSIONAL SERVICE CONFORMS TO THE CURRENT ILLINOIS MINIMUM STANDARDS FOR A BOUNDARY SURVEY FOR THE PROPOSED PARCEL(S) TO BE ACQUIRED BY THE STATE OF ILLINOIS, DEPARTMENT OF TRANSPORTATION, SHOWN HEREON.

DATED _____

DALE L. WOOLARD, PLS NO. 035-003321
LICENSE EXPIRATION DATE: 11/30/2010

CURVE TABLE				
CURVE	CHORD BEARING	CHORD LENGTH	LENGTH	RADIUS
C1	S00°13'10"E	3.24'	3.24	125.00'
C2	S02°14'05"W	7.47'	7.47'	125.00'
C3	S47°33'49"W	34.49'	38.06'	25.00'

LINE TABLE		
LINE	BEARING	DIST
L1	S03°56'47"W	5.46'
L2	N51°56'23"W	23.66'
L3	S89°40'14"W	19.66'
L4	S72°04'35"W	41.79'
L5	N86°03'20"W	57.69'
L6	S01°10'05"W	29.47'
L7	N86°11'03"E	83.70'
L8	N71°02'13"E	25.36'
L9	N82°10'03"E	12.99'
L10	S86°03'00"E	46.00'
L11	S88°49'55"E	35.74'
L12	S88°49'55"E	14.26'
L13	S64°00'42"E	47.64'

F.A. RTE.	SECTION	COUNTY	TOTAL SHEETS	SHEET NO.
8959	05-00016-03-BR	MADISON	129	40
STA. 53+00		TO STA. 68+00		
FED. ROAD DIST. NO. 8 ILLINOIS FED. AID PROJECT				
CONTRACT NO. 97351				

CURVE DATA #3
PI = 33+23.94
Δ = 25°44'17"
R = 450.00'
T = 102.81
L = 202.15'
NO S.E.
PC = 32+22.86
PT = 34+25.01

n/f
RLP DEVELOPMENT CO. INC.
DOC# 2004R 70361

n/f
IDOT
4527/3496

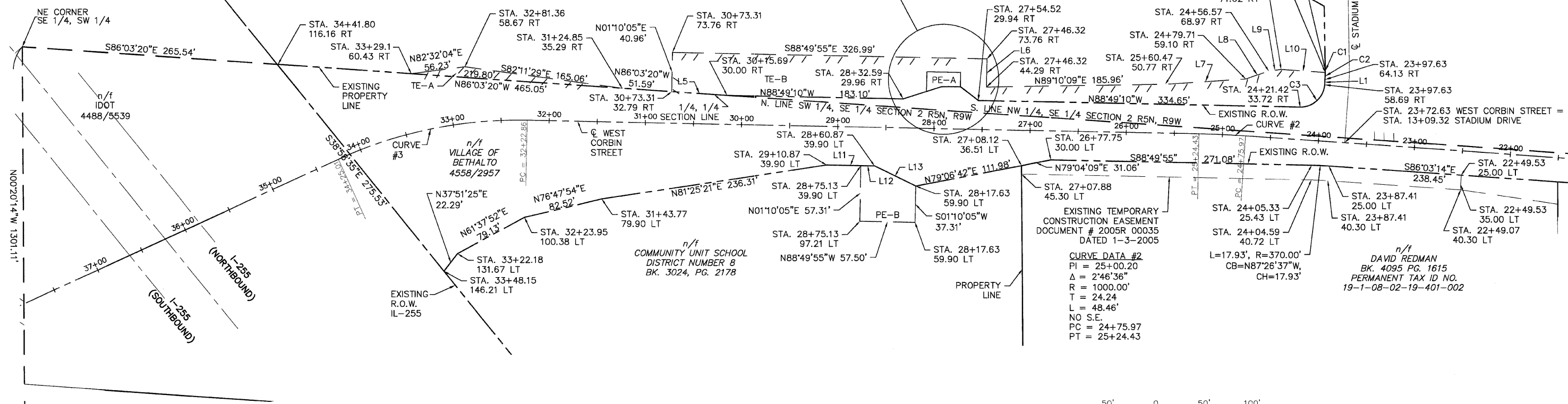
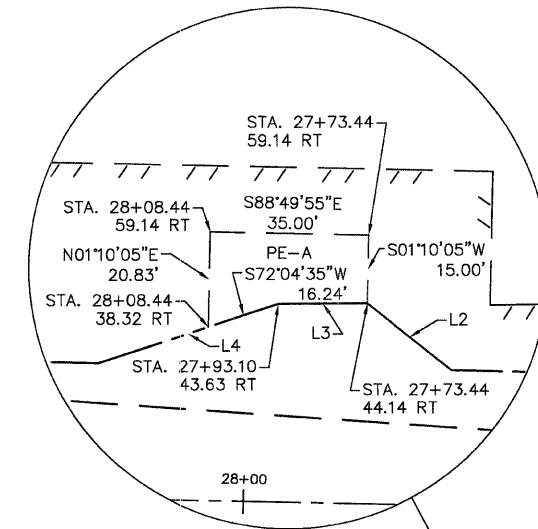
NE CORNER
SE 1/4, SW 1/4

n/f
IDOT
4488/5539

(NORTHBOUND)
I-255
(SOUTHBOUND)
I-255

SW CORNER, SE 1/4
P.O.C. TRACT P.E. B
IRON PIPE

SPACE RESERVED FOR RECORDING OFFICER



CURVE DATA #2
PI = 25+00.20
Δ = 2°46'36"
R = 1000.00'
T = 24.24
L = 48.46'
NO S.E.
PC = 24+75.97
PT = 25+24.43

n/f
DAVID REDMAN
BK. 4095 PG. 1615
PERMANENT TAX ID NO.
19-1-08-02-19-401-002



PARCEL NO.	OWNER	TOTAL HOLDING ACRES	EASEMENTS		PERMANENT TAX NUMBER	PROPERTY ACQUIRED BY
			ACRES	SQ. FT.		
10.17	RLP DEVELOPMENT CO. INC.	10.17	PE-A 0.0133 ACRES	579	19-1-08-02-00-000-017.002	GRADING, DRAINAGE & MAINTENANCE
			TE-A 0.0657 ACRES	1223		
			TE-B 0.4989 ACRES	21730		
34.8483	COMMUNITY UNIT SCHOOL DISTRICT 8	34.8483	PE-B 0.0657 ACRES	2863	19-1-08-02-19-401-003	GRADING, DRAINAGE & MAINTENANCE

REVISION	
DATE	DESCRIPTION

Hoelscher Engineering, P.C.
11 Executive Drive, Suite 12
Fairview Heights, Illinois 62208
(618)624-8610 FAX: (618)624-8611

PLAT OF HIGHWAYS
MADISON COUNTY
STATION 53+00 TO STATION 68+00
SHEET OF

COMPLETION DATE OF FIELD WORK PERFORMED
LAND SURVEY:
RIGHT OF WAY STAKING: