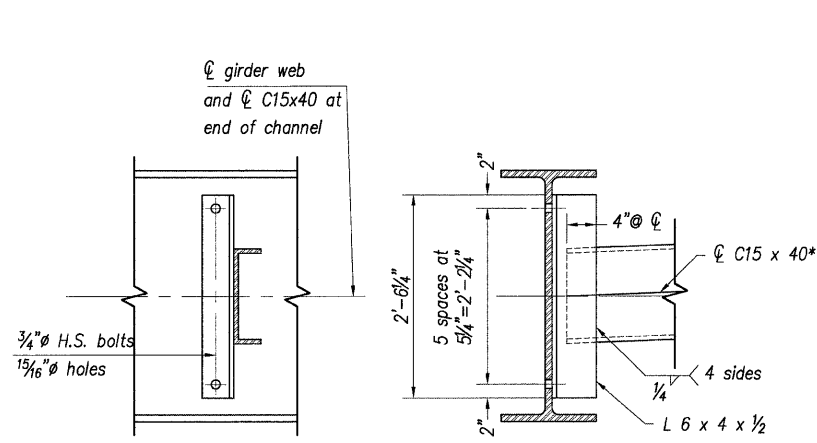


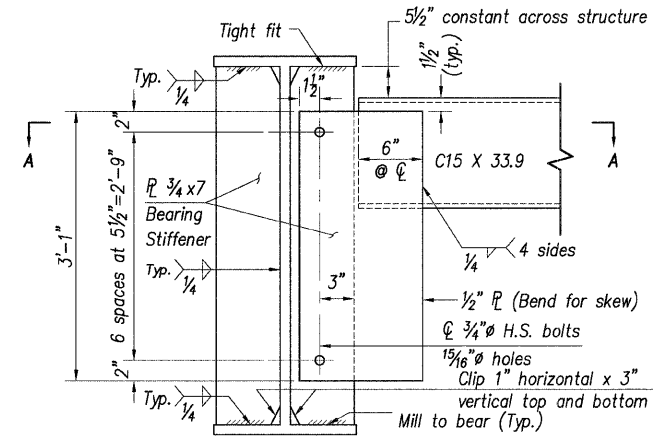
Contract # 97351



**TYPICAL INTERIOR DIAPHRAGM (D2)**

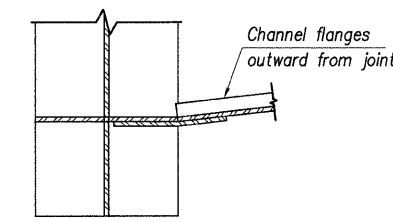
(Number Required = 35)

\*An alternate C15 x 50 channel is permitted to facilitate material acquisition. Calculated weight of structural steel is based on the lighter section. The alternate, if utilized, shall be provided at no extra cost to the Department.

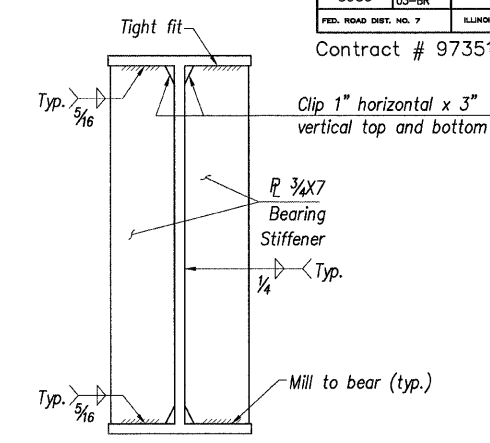


**TYPICAL END DIAPHRAGM (D1)**

(Number Required = 10)



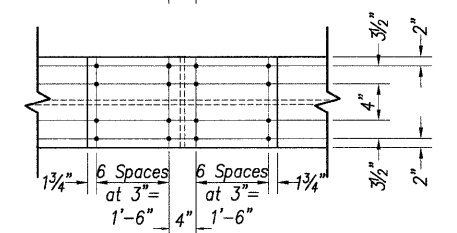
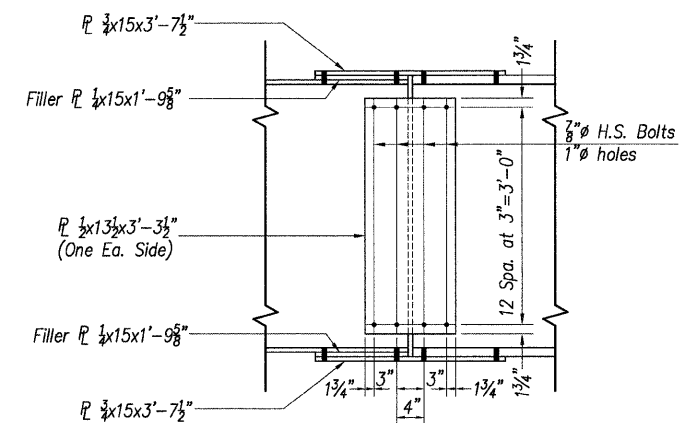
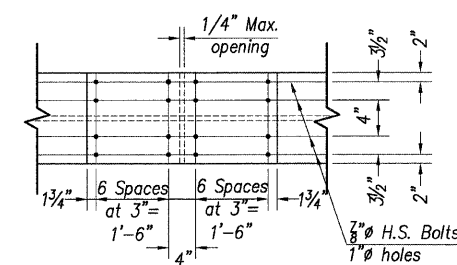
**SECTION A-A**



**BEARING STIFFENER AT PIER**

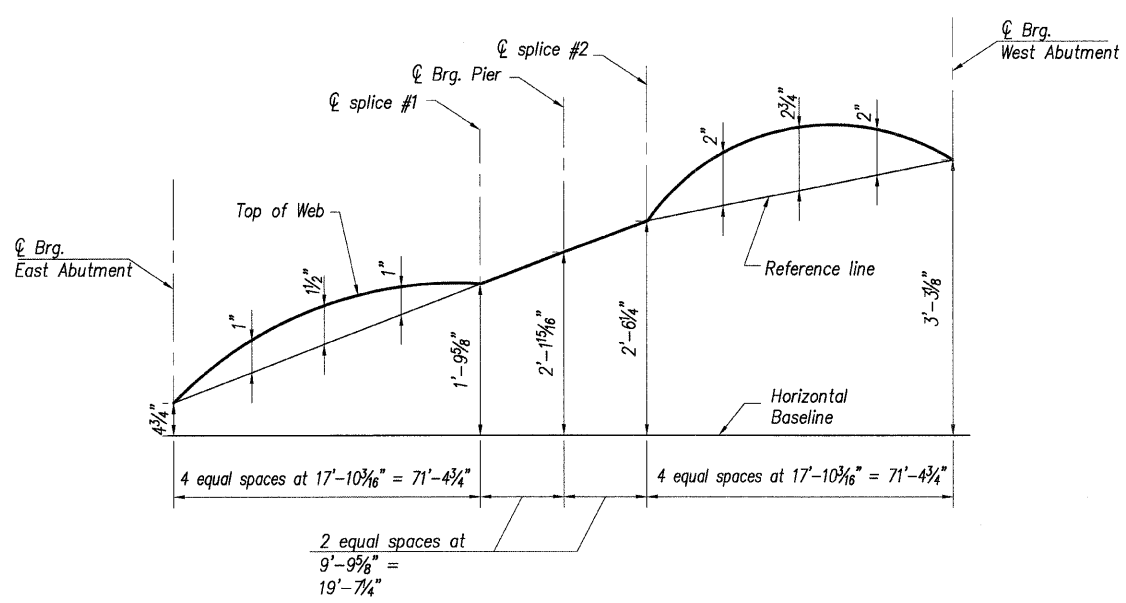
	Girder 1	Girder 2	Girder 3	Girder 4	Girder 5	Girder 6
Center Bearing East Abutment	494.08	494.24	494.40	494.53	494.43	494.33
Center Splice #1	495.44	495.61	495.77	495.90	495.80	495.70
Center Bearing Pier	495.90	496.06	496.22	496.34	496.24	496.14
Center Splice #2	496.18	496.34	496.49	496.61	496.50	496.40
Center Bearing West Abutment	496.98	497.12	497.26	497.36	497.23	497.11

**TOP OF WEB ELEVATIONS (For Fabrication Use Only)**



**FIELD SPLICE DETAIL**

(Number Required = 12)



**CAMBER DIAGRAM**

- Notes**
- All splice plates, and bearing stiffeners shall be AASHTO M270 Grade 50.
  - High Strength bolts shall be AASHTO M164/ ASTM A325 Type 1.
  - Two hardened washers required for each set of oversized holes in diaphragms.
  - NTR denotes plates to which notch toughness requirements (zone 2) are applicable.
  - All splice plates except fill plates shall meet N.T.R.

DESIGNED	T.M.M.
CHECKED	C.M.W.
DRAWN	B.D.M./S.H.K.
CHECKED	C.M.W.

**Hoelscher Engineering, P.C.**  
11 Executive Drive Suite 12  
Fairview Heights, Illinois 62208  
(618)624-8610 FAX: (618)624-8611

REVISIONS	
NAME	DATE

ILLINOIS DEPARTMENT OF TRANSPORTATION  
**STRUCTURAL STEEL DETAILS**  
WEST CORBIN STREET OVER F.A.P. 310 (IL-255)  
F.A.U. 8959 SECTION 05-00016-03-BR  
MADISON COUNTY  
STATION 36+23.37  
STRUCTURE NO. 060-6851