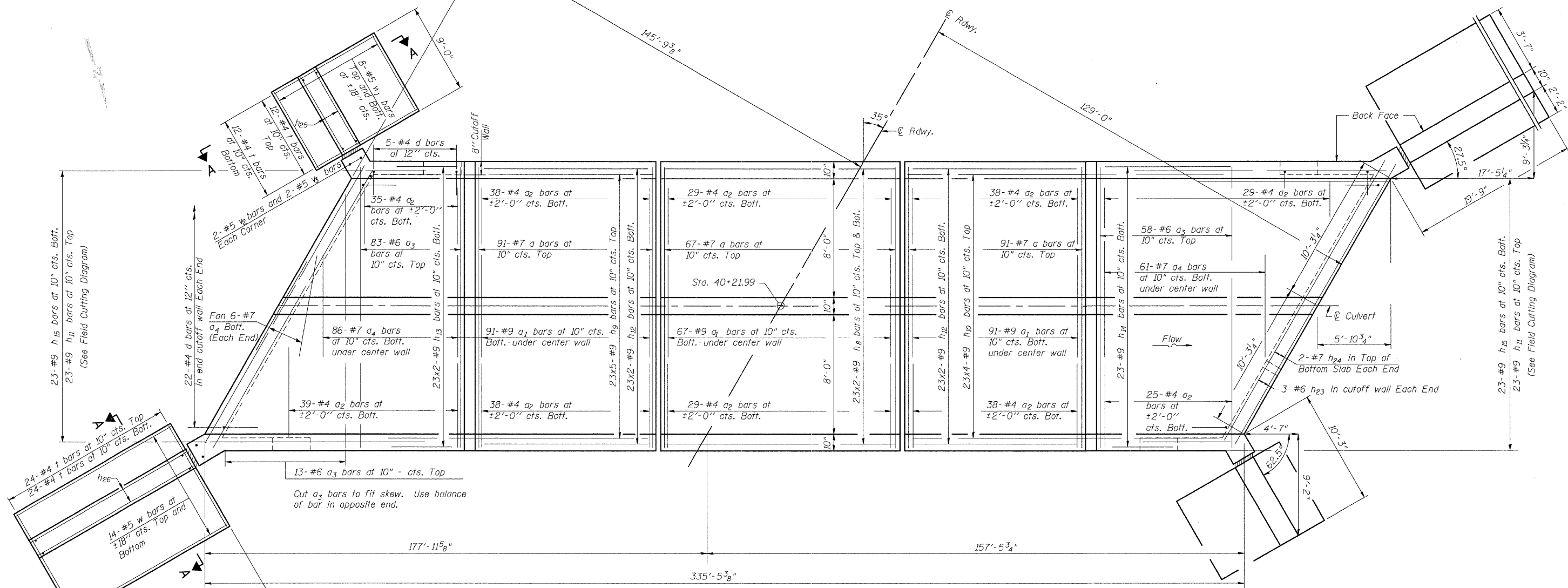


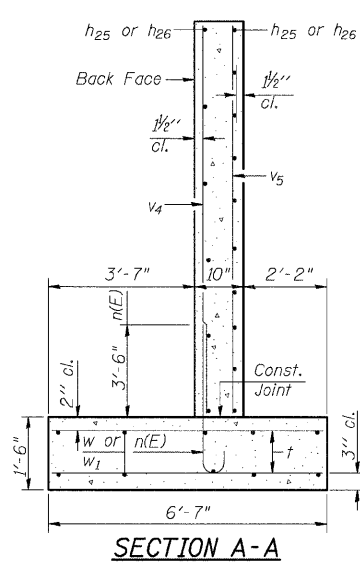
STATE OF ILLINOIS  
DEPARTMENT OF TRANSPORTATION

ROUTE NO.	SECTION	COUNTY	STATION	SHEET
F.A.U. 8959	05-00016-03-BR	MADISON	129	83
SHEET NO. 2 5 SHEETS				
FED. ROAD DIST. NO. 7	ILLINOIS	FED. AID PROJECT-		

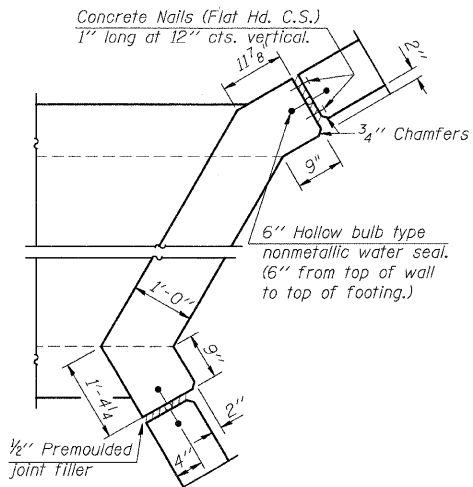
Contract # 97351



**BOTTOM SLAB PLAN**



**SECTION A-A**



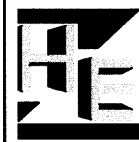
**CORNER DETAIL**

**MINIMUM BAR LAP**

(Barrel)

#4 bar	= 1'-4"
#5 bar	= 1'-8"
#6 bar	= 2'-0"
#7 bar	= 2'-9"
#8 bar	= 3'-8"
#9 bar	= 4'-7"

DESIGNED	C.M.W.
CHECKED	J.S.A.
DRAWN	B.D.M.
CHECKED	C.M.W.



**Hoelscher Engineering, P.C.**  
11 Executive Drive Suite 12  
Fairview Heights, Illinois 62208  
(618)624-8610 FAX: (618)624-8611

REVISIONS	
NAME	DATE

ILLINOIS DEPARTMENT OF TRANSPORTATION  
**CULVERT BOTTOM SLAB PLAN**  
WEST CORBIN STREET OVER WOOD RIVER TRIBUTARY  
F.A.P. 310 SECTION 05-00016-03-BR  
MADISON COUNTY  
STATION 40+21.99  
S.N.060-6853