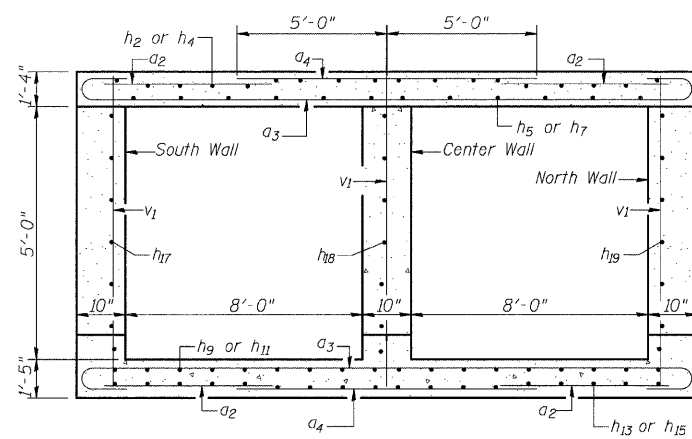


STATE OF ILLINOIS
DEPARTMENT OF TRANSPORTATION

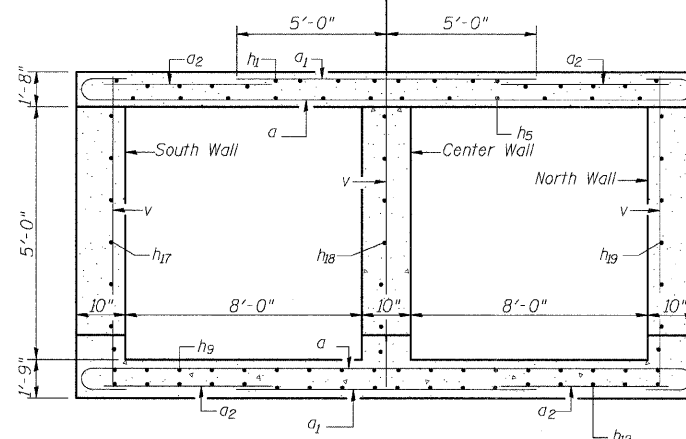
ROUTE NO.	SECTION	COUNTY	STATION	SHEET NO.
F.A.U. 8959	05-00016-03-BR	MADISON	129	86
FED. ROAD DIST. NO. 7		ILLINOIS	FED. AID PROJECT-	

SHEET NO. 5
5 SHEETS

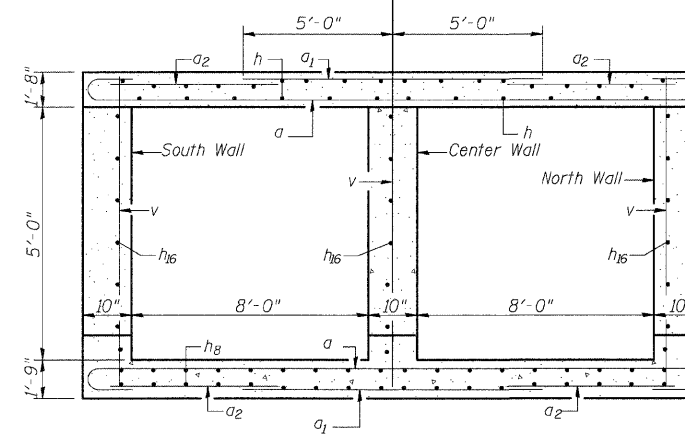
Contract # 97351



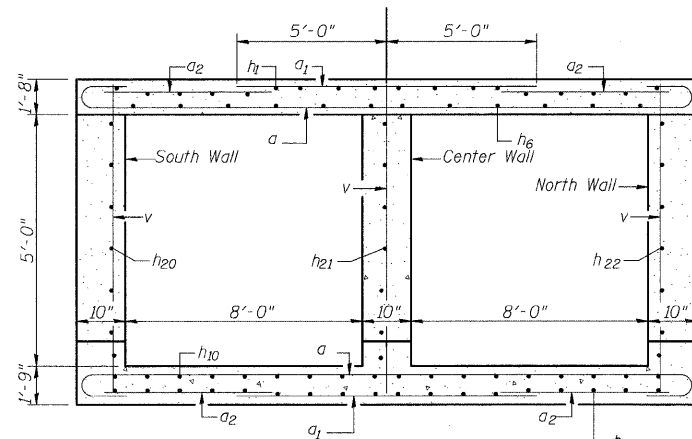
SECTION THRU SEGMENT A



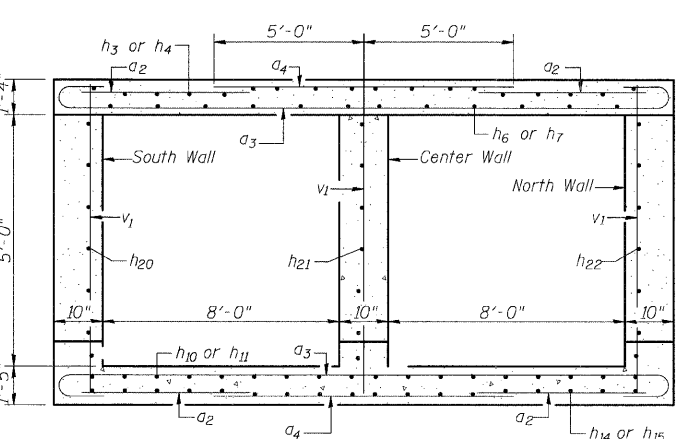
SECTION THRU SEGMENT B



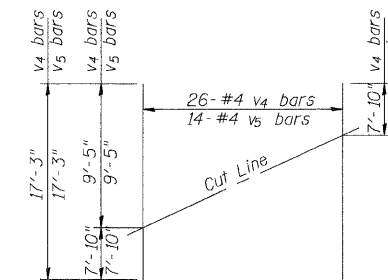
SECTION THRU SEGMENT C



SECTION THRU SEGMENT D

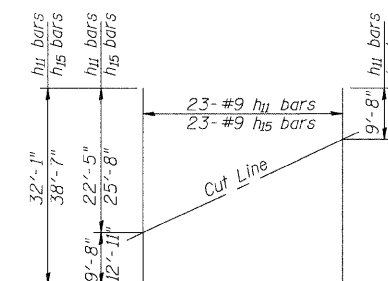


SECTION THRU SEGMENT E



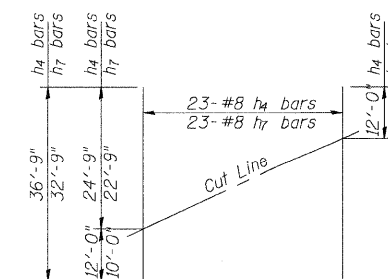
FIELD CUTTING DIAGRAM

Order v₄ and v₅ full length. Cut as shown and use remainder of bars in opposite end.



FIELD CUTTING DIAGRAM

Order v₁₁ and v₁₅ full length. Cut as shown and use remainder of bars in opposite end.



FIELD CUTTING DIAGRAM

Order v₄ and v₇ full length. Cut as shown and use remainder of bars in opposite end.

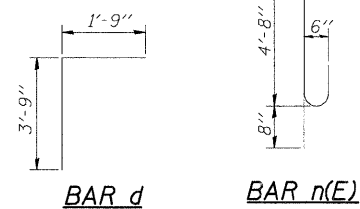
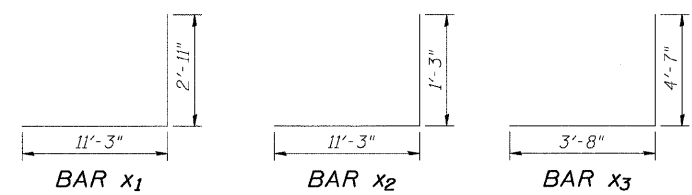
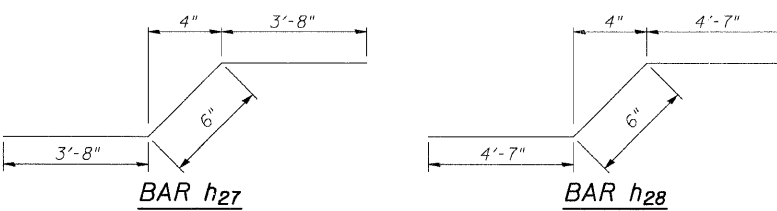
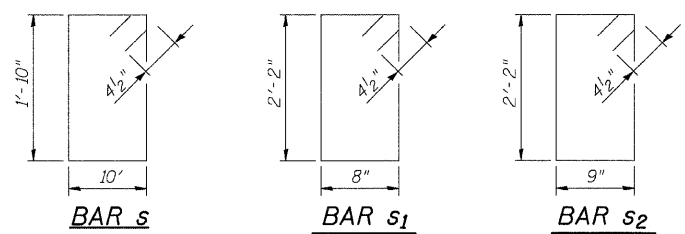
BILL OF MATERIAL

Bar	No.	Size	Length	Shape
a	498	#7	19'-11"	
a ₁	498	#9	10'-0"	
a ₂	676	#4	7'-4"	
a ₃	308	#6	19'-7"	
a ₄	318	#7	10'-0"	
d	64	#4	5'-6"	
h	92	#8	29'-5"	
h ₁	92	#8	39'-3"	
h ₂	46	#8	31'-4"	
h ₃	23	#8	40'-0"	
h ₄	23	#8	36'-9"	
h ₅	115	#8	30'-4"	
h ₆	92	#8	32'-0"	
h ₇	23	#8	32'-9"	
h ₈	92	#9	29'-11"	
h ₉	115	#9	31'-4"	
h ₁₀	92	#9	33'-0"	
h ₁₁	23	#9	32'-1"	
h ₁₂	92	#9	39'-8"	
h ₁₃	46	#9	32'-3"	
h ₁₄	23	#9	40'-0"	
h ₁₅	23	#9	38'-7"	
h ₁₆	54	#6	28'-7"	
h ₁₇	45	#6	30'-4"	
h ₁₈	45	#6	31'-7"	
h ₁₉	45	#6	32'-10"	
h ₂₀	36	#6	35'-7"	
h ₂₁	36	#6	34'-0"	
h ₂₂	36	#6	32'-4"	
h ₂₃	10	#6	21'-3"	
h ₂₄	8	#7	22'-2"	
h ₂₅	34	#4	9'-3"	
h ₂₆	34	#4	18'-9"	
h ₂₇	46	#8	7'-10"	
h ₂₈	46	#9	9'-8"	
n(E)	40	#6	5'-4"	
s	44	#4	6'-1"	
s ₁	84	#4	6'-5"	
s ₂	40	#4	6'-7"	
t	144	#4	6'-4"	
v	747	#8	8'-1"	
v ₁	474	#6	7'-5"	
v ₂	8	#5	6'-5"	
v ₃	8	#5	6'-2"	
v ₄	26	#4	17'-3"	
v ₅	14	#4	17'-3"	
v ₆	10	#4	9'-5"	
w	56	#5	18'-9"	
w ₁	32	#5	9'-3"	
x	28	#8	20'-3"	
x ₁	20	#8	14'-2"	
x ₂	8	#8	12'-6"	
x ₃	40	#8	8'-3"	
Concrete Box Culverts	Cu. Yd.		935	
Reinforcement Bars, Epoxy Coated	Pound		320	
Reinforcement Bars	Pound		204,384	

MINIMUM BAR LAP

Bar Size	Minimum Bar Lap
#4 bar	= 1'-4"
#5 bar	= 1'-8"
#6 bar	= 2'-0"
#7 bar	= 2'-9"
#8 bar	= 3'-8"
#9 bar	= 4'-7"

Notes:
Reinforcement bars designated (E) shall be epoxy coated.
Bars indicated thus 12x4-#5 etc. indicates 12 lines of bars with 4 lengths per line.



DESIGNED	C.M.W.
CHECKED	J.S.A.
DRAWN	B.D.M.
CHECKED	C.M.W.



Hoelscher Engineering, P.C.
11 Executive Drive Suite 12
Fairview Heights, Illinois 62208
(618)624-8610 FAX: (618)624-8611

REVISIONS	
NAME	DATE

ILLINOIS DEPARTMENT OF TRANSPORTATION
CULVERT DETAILS
WEST CORBIN STREET OVER WOOD RIVER TRIBUTARY
F.A.P. 310 SECTION 05-00016-03-BR
MADISON COUNTY
STATION 40+21.99
S.N.060-6853