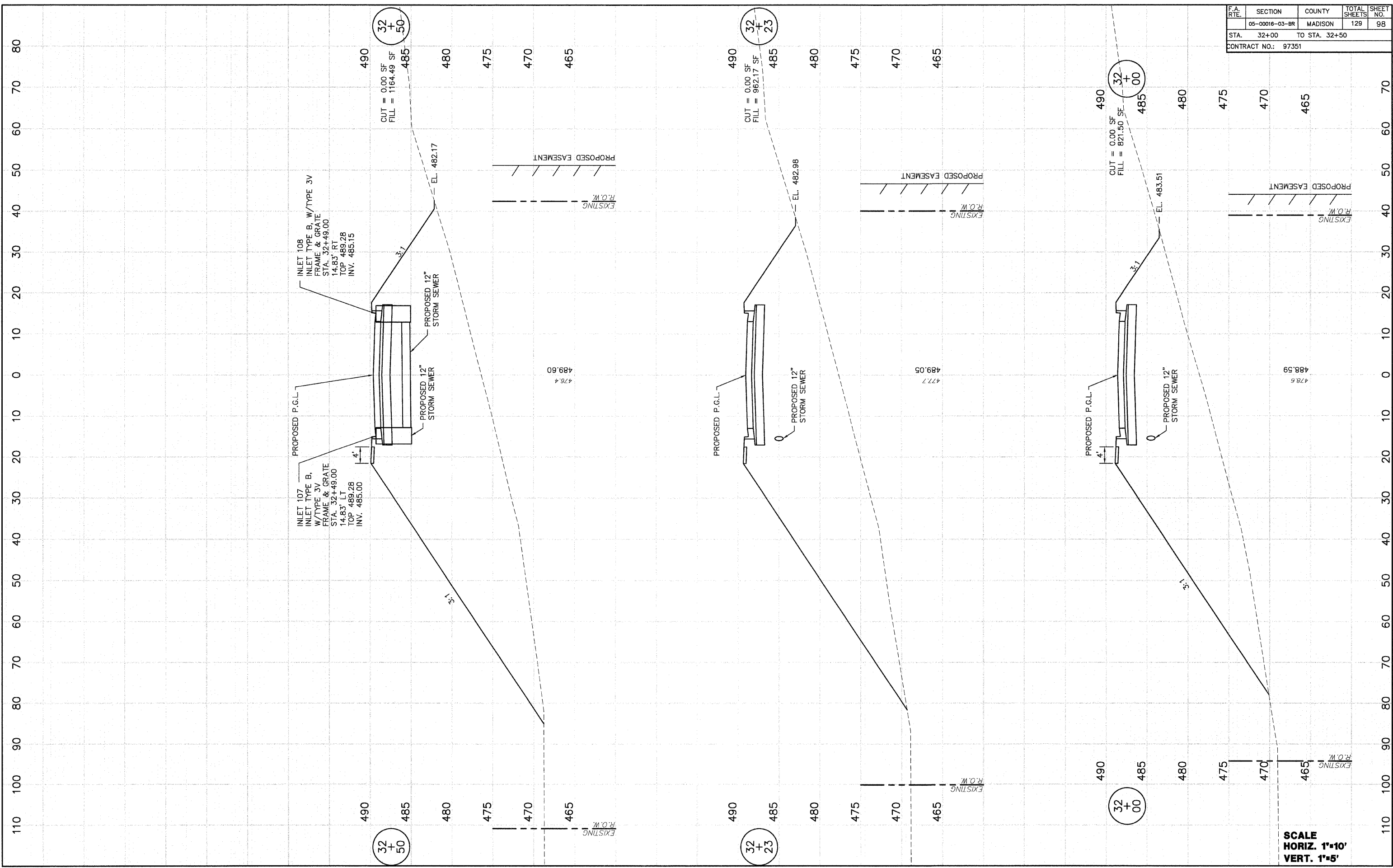


F.A. RTE.	SECTION	COUNTY	TOTAL SHEETS	SHEET NO.
	05-00016-03-BR	MADISON	129	98
STA. 32+00		TO STA. 32+50		
CONTRACT NO.: 97351				

FINAL SURVEY	DATE	BY
SURVEYED	1/19/08	D.L.W.
PLOTTED		
NOTE BOOK NO.		
AREAS CHECKED		

ORIGINAL SURVEY	DATE	BY
SURVEYED	8/26/05	D.L.W.
PLOTTED		
NOTE BOOK NO.		
AREAS CHECKED		



INLET 107
INLET TYPE B, W/TYPE 3V
FRAME & GRATE
STA. 32+49.00
14.83' RT
TOP 489.28
INV. 485.00

INLET 108
INLET TYPE B, W/TYPE 3V
FRAME & GRATE
STA. 32+49.00
14.83' RT
TOP 489.28
INV. 485.15

PROPOSED P.G.L.

PROPOSED 12" STORM SEWER

PROPOSED P.G.L.

PROPOSED 12" STORM SEWER

SCALE
HORIZ. 1"=10'
VERT. 1"=5'