

STATE OF ILLINOIS  
DEPARTMENT OF TRANSPORTATION  
DIVISION OF HIGHWAYS

F.A.I. RTE.	SECTION	COUNTY	TOTAL SHEETS	SHEET NO.
90/94/290	2013-059LS	COOK	140	1
ILLINOIS CONTRACT NO. 60X37				

FOR INDEX OF SHEETS, SEE SHEET NO. 2

**PROPOSED  
HIGHWAY PLANS**

FAI 90 /94 /290 ROUTE (CIRCLE INTERCHANGE)  
I-90/94: ROOSEVELT RD. TO WASHINGTON BLVD. & PEORIA ST. TO CLINTON ST.  
I-290: ROOSEVELT RD. TO VAN BUREN ST. & ASHLAND AVE. TO CLINTON ST.  
SECTION 2013-059LS  
LANDSCAPING  
COOK COUNTY

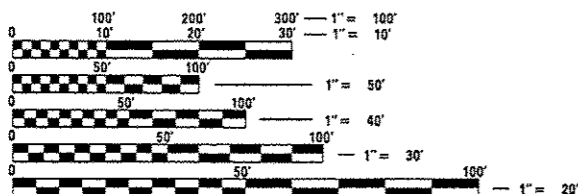
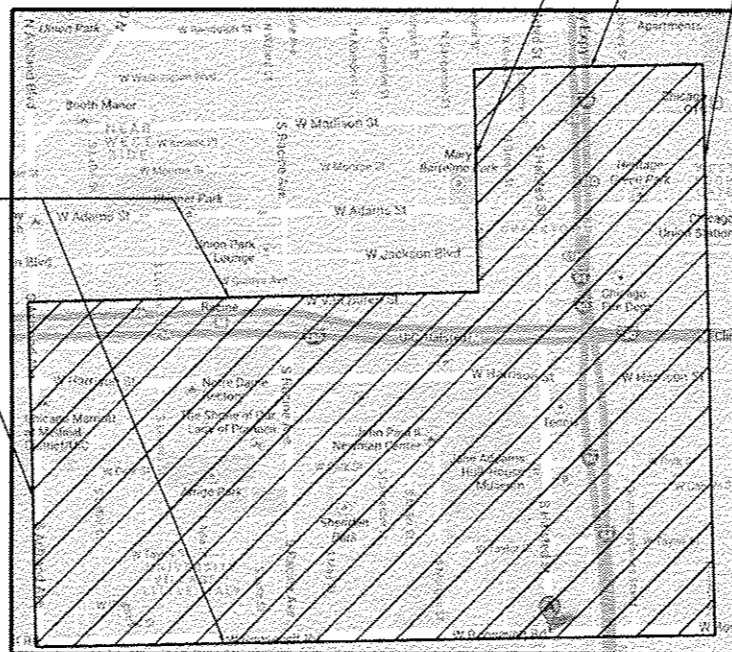
C-91-078-14



IMPROVEMENT LOCATED IN THE CITY OF CHICAGO

LIMITS ALONG I-290:  
ROOSEVELT RD. TO VAN BUREN ST. &  
ASHLAND AVE. TO CLINTON ST.

LIMITS ALONG I-90/94:  
ROOSEVELT RD. TO WASHINGTON BLVD. &  
PEORIA ST. TO CLINTON ST.



FULL SIZE PLANS HAVE BEEN PREPARED USING STANDARD  
ENGINEERING SCALES. REDUCED SIZED PLANS WILL NOT

ON REDUCED PLANS, THE ABOVE SCALES MAY BE USED.

J.U.L.I.E.  
JOINT UTILITY LOCATION INFORMATION FOR EXCAVATION  
1-800-892-0123  
OR 811

PROJECT ENGINEER: MELISSA DEL ROSARIO (847) 705-4391  
FABIOLA QUIROZ (847) 705-4596  
PROJECT MANAGER: RICHARD WANNER  
CONTRACT NO. 60X37

STATE OF ILLINOIS  
DEPARTMENT OF TRANSPORTATION  
DIVISION OF HIGHWAYS  
SUBMITTED *October 24 2013*  
*John Frantom*  
DEPUTY DIRECTOR OF HIGHWAYS, REGION ENGINEER  
*Dec 6 2013*  
*John D. Baranelli, P.E.*  
ACTING ENGINEER OF DESIGN AND ENVIRONMENT  
*Dec 6 2013*  
*Omer Osman, P.E.*  
DIRECTOR OF HIGHWAYS, CHIEF ENGINEER

PRINTED BY THE AUTHORITY  
OF THE STATE OF ILLINOIS

**INDEX OF SHEETS**

SHEET NO.	DESCRIPTION
1	COVER SHEET
2	INDEX OF SHEETS, GENERAL NOTES, & STATE STANDARDS
3-5	SUMMARY OF QUANTITIES
6	TREE PLANTING LOCATIONS
7	TREE DETAILS
8	WORK ORDER
9-10	DISTRICT DETAILS

**HIGHWAY STANDARDS**

701501-06	URBAN LANE CLOSURE, 2L, 2W, UNDIVIDED
701601-09	URBAN LANE CLOSURE, MULTILANE, 1W OR 2W WITH NON TRAVERSABLE MEDIAN
701701-09	URBAN LANE CLOSURE, MULTILANE INTERSECTION
701801-05	SIDEWALK, CORNER OR CROSSWALK CLOSURE
701901-03	TRAFFIC CONTROL DEVICES

**GENERAL NOTES**

PRIOR TO THE START OF CONSTRUCTION, THE CONTRACTOR MUST SUBMIT A PROPOSED CONSTRUCTION SCHEDULE IN A FORMAT APPROVED BY THE ENGINEER. NO WORK WILL BE PERMITTED TO PROCEED UNTIL THE PROPOSED SCHEDULE IS REVIEWED AND APPROVED BY THE ENGINEER.

IN AREAS WHERE MULTIPLE LOCATIONS ARE PROPOSED TO BE CONSTRUCTED, THE CONTRACTOR WILL BE REQUIRED TO STAGE WORK SO AS NOT TO ADVERSELY AFFECT THE FLOW OF PEDESTRIAN VEHICULAR TRAFFIC WITHIN THE GENERAL AREA. THE PROPOSED CONSTRUCTION SCHEDULE SHOULD REFLECT A PROGRESSION OF WORK THAT WILL MAINTAIN TRAFFIC TO THE SATISFACTION OF THE ENGINEER.

THE CITY RESERVES THE RIGHT TO ORDER, IN WRITING, CHANGES IN THE WORK OR THE CONTRACT TME. THESE CHANGES MAY CONSIST OF ADDITIONS, DELETIONS OR OTHER REVISIONS, AT THE DISCRETION OF THE CITY.

WHEN UNFORESEEN CIRCUMSTANCES IMPACT THE CONTRACTOR'S APPROVED CONSTRUCTION SCHEDULE, IT MAY BE NECESSARY TO ADJUST OR REVISE THE SCHEDULE IN ORDER TO MAINTAIN PROGRESS AND PROVIDE FOR PEDESTRIAN AND VEHICULAR SAFETY. THE CONTRACTOR WILL COOPERATE FULLY WITH THE CITY IN THIS REGARD.

LANE CLOSURES, WORK ZONE RESTRICTIONS, REVISED WORK DAY HOURS AND WEEKEND OR HOLIDAY WORK SCHEDULES ARE SUBJECT TO THE APPROVAL OF THE COMMISSIONER. THE CONTRACTOR MUST RECEIVE WRITTEN AUTHORIZATION, EITHER BY PERMIT OR NOTIFICATION BY THE ENGINEER, BEFORE PROCEEDING WITH WORK UNDER THESE CIRCUMSTANCES.

BEFORE STARTING ANY EXCAVATION, THE CONTRACTOR SHALL CALL "JULIE" AT 800-892-0123 AND C.U.A.N. (CHICAGO UTILITY ALERT NETWORK) AT 312-744-7000 FOR FIELD LOCATIONS OF BURIED ELECTRICAL, TELEPHONE, AND GAS FACILITIES. (48 HOUR NOTIFICATION IS REQUIRED).

THE CONTRACTOR SHALL COORDINATE ACTIVITIES WITH UTILITY COMPANIES AND THE CITY OF CHICAGO AND THE UIC CAMPUS.

THE CONTRACTOR WILL NOT BE ALLOWED TO SET UP A YARD OR FIELD OFFICE ON STATE PROPERTY WITH OUT WRITTEN PERMISSION FROM I.D.O.T. OR THE CITY OF CHICAGO.

WHENEVER, DURING CONSTRUCTION OPERATIONS, ANY LOOSE MATERIAL IS DEPOSITED IN THE FLOW LINE OF DRAINAGE STRUCTURES SUCH THAT THE NATURAL FLOW OF WATER IS OBSTRUCTED, IT SHALL BE REMOVED AT THE CLOSE OF EACH WORKING DAY. AT THE CONCLUSION OF CONSTRUCTION OPERATIONS, ALL UTILITY STRUCTURES SHALL BE FREE FROM DIRT AND DEBRIS. THE WORK SPECIFIED ABOVE WILL NOT BE PAID FOR SEPARATELY BUT SHALL BE INCLUDED IN THE COST FOR CATCH BASINS AND MANHOLES TO BE ADJUSTED IN THIS CONTRACT.

ANY EXISTING STORM SEWER DAMAGED BY THE CONTRACTOR DURING CONSTRUCTION SHALL BE REPLACED BY THE CONTRACTOR AT NO COST TO THE CITY.

PAY ITEMS IN THE SUMMARY OF QUANTITIES HAVE BEEN ESTIMATED, IF, IN THE ENGINEER'S OPINION, THE WORK IS NOT REQUIRED, THE ITEM WILL BE DEDUCTED FROM THE CONTRACT AND NO ADDITIONAL COMPENSATION TO THE CONTRACTOR WILL BE ALLOWED.

ANY WORK WITHIN A LANDSCAPED MEDIAN REQUIRES A LANE CLOSURE AND USE OF AN ARROW BOARD PER IDOT SPECIFICATIONS.

CONTRACTOR MUST ACQUIRE PERMITS FROM CHICAGO DEPARTMENT OF TRANSPORTATION (CDOT), CHICAGO BUREAU OF FORESTRY (BOF), AND CHICAGO DEPARTMENT OF WATER MANAGEMENT. THE PERMITS ARE DETAILED INBOOK 3, PAGE 05-16, SUBMITTALS ITEM 7.

**COMMITMENT**

NO WORK SHALL BE DONE PAST FRIDAY, MAY 8TH BY THE UIC FORUM AND THE UIC PAVILLION DUE TO SPECIAL SCHOOL EVENTS. ALL INSTALLATION AND RESTORATION WORK WITHIN THESE AREAS SHALL BE COMPLETED BY FRIDAY, MAY 8TH.

FILE NAME *	USER NAME * delraserions	DESIGNED - _____	REVISED - _____	<b>STATE OF ILLINOIS DEPARTMENT OF TRANSPORTATION</b>	<b>INDEX OF SHEETS, GENERAL NOTES, &amp; STATE STANDARDS</b>	F.A.I. RTE.	SECTION	COUNTY	TOTAL SHEETS	SHEET NO.	
on:\work\project\delraserions\102358897	0107814-ahh-Landscape.dgn	DRAWN - _____	REVISED - _____			90/94/290	2013-059LS	COOK	10	2	
Default	PLOT SCALE = 1/8" = 1'-0"	CHECKED - _____	REVISED - _____			CONTRACT NO. 60X37					
	PLOT DATE = 10/31/2013	DATE - _____	REVISED - _____			ILLINOIS FED. AID PROJECT					

*Rev.*

SCALE: \_\_\_\_\_ SHEET \_\_\_\_\_ OF \_\_\_\_\_ SHEETS STA. \_\_\_\_\_ TO STA. \_\_\_\_\_

SUMMARY OF QUANTITIES			CONSTRUCTION TYPE CODE				
CODE NO	ITEM	UNIT	URBAN 1001- STATE TOTAL QUANTITIES	CONSTRUCTION TYPE CODE			
				0031			
A2002282	TREE-ALNUS X SPAETHII (SPAETHS ALDER), 2-1/2" CALIPER, BALLED AND BURLAPPED	EACH	3	3			
A2004617	TREE, GLEDITSIA TRIACANTHOS VAR. (INERMIS DRAVES (STREET KEEPER HONEYLOCUST), 2-1/2" CALIPER, BALLED AND BURLAPPED	EACH	2	2			
A2006900	TREE, QUERCUS MACDANIELLI CLEMENS (HERITAGE OAK), 2-1/2" CALIPER, BALLED AND BURLAPPED	EACH	15	15			
A2008102	TREE, TILIA CORDATA GLENLIVEN (GLENLIVEN LITTLELEAF LINDEN), 3" CALIPER, BALLED AND BURLAPPED	EACH	18	18			
A2008470	TREE, ULMUS AMERICANA PRINCETON (PRINCETON AMERICAN ELM), 2-1/2" CALIPER, BALLED AND BURLAPPED	EACH	9	9			
X0322998	TREE PLANTING IN URBAN STRUCTURES	EACH	90	90			
20100110	TREE REMOVAL (6 TO 15 UNITS DIAMETER)	UNIT	250	250			
20100210	TREE REMOVAL (OVER 15 UNITS DIAMETER)	UNIT	100	100			
67100100	MOBILIZATION	L SUM	1	1			
A2000118	TREE, ACER X FREEMANII AUTUMN BLAZE (AUTUMN BLAZE FREEMAN MAPLE), 3" CALIPER, BALLED AND BURLAPPED	EACH	6	6			

SUMMARY OF QUANTITIES			CONSTRUCTION TYPE CODE				
CODE NO	ITEM	UNIT	URBAN 1001- STATE TOTAL QUANTITIES	CONSTRUCTION TYPE CODE			
				0031			
A2000224	TREE, ACER X FREEMANII MARMO (MARMO FREEMAN MAPLE), 3" CALIPER, BALLED AND BURLAPPED	EACH	20	20			
A2002009	TREE, AESCULUS FLAVEA (YELLOW SWEET BUCKEYE), 2-1/2" CALIPER, BALLED AND BURLAPPED	EACH	6	6			
A2002470	TREE, BETULA NIGRA HERITAGE (HERITAGE RIVER BIRCH), 8' HEIGHT, CLUMP FORM, BALLED AND BURLAPPED	EACH	10	10			
A2002824	TREE, CATALPA SPECIOSA (NORTHERN CATALPA), 3" CALIPER, BALLED AND BURLAPPED	EACH	10	10			
A2002924	TREE, CELTIS OCCIDENTALIS (COMMON HACKBERRY), 3" CALIPER, BALLED AND BURLAPPED	EACH	15	15			
A2004514	TREE, GINKGO BILOBA AUTUMN GOLD (AUTUMN GOLD GINKGO), 2-1/2" CALIPER BALLED AND BURLAPPED	EACH	5	5			
A2005042	TREE, GYMNOCLADUS DIOICUS ESPRESSO-JFS (ESPRESSO KENTUCKY COFFEETREE), 3" CALIPER, BALLED AND BURLAPPED	EACH	30	30			
A2006270	TREE, POPULUS TREMULOIDES (QUAKING ASPEN), 8' HEIGHT, CLUMP FORM, BALLED AND BURLAPPED	EACH	9	9			

FILE NAME *	USER NAME * <i>adras@illinois.gov</i>	DESIGNED -	REVISED -
<i>g:\work\new\illinois\transportation\0365007\007014-111</i>	<i>adras@illinois.gov</i>	DRAWN -	REVISED -
	PLOT SCALE * 1000000' / 1" =	CHECKED -	REVISED -
	PLOT DATE * 10/26/2013	DATE -	REVISED -

**STATE OF ILLINOIS  
DEPARTMENT OF TRANSPORTATION**

SUMMARY OF QUANTITIES	
SCALE: _____	SHEET NO. _____ OF _____ SHEETS
STA. _____	TO STA. _____

F.A.I. RYE.	SECTION	COUNTY	TOTAL SHEETS	SHEET NO.
90/94/290	2013-059LS	COOK	10	3
CONTRACT NO. 60X37				
FED. ROAD DIST. NO. 1 ILLINOIS FED. AID PROJECT				

SUMMARY OF QUANTITIES			URBAN 100% STATE CONSTRUCTION TYPE CODE					
CODE NO	ITEM	UNIT	TOTAL QUANTITIES					
				0031				
A2006520	TREE, QUERCUS BICOLOR (SWAMP WHITE OAK), 2-1/2" CALIPER, BALLED AND BURLAPPED	EACH	9	9				
A2006618	TREE, QUERCUS IMBRICARIA (SHINGLE OAK), 2-1/2" CALIPER, BALLED AND BURLAPPED	EACH	9	9				
A2006720	TREE, QUERCUS MACROCARPA (BUR OAK), 2-1/2" CALIPER, BALLED AND BURLAPPED	EACH	7	7				
A2006820	TREE, QUERCUS MUEHLENBERGII (CHINKAPIN OAK), 2-1/2" CALIPER, BALLED AND BURLAPPED	EACH	18	18				
A2007120	TREE, QUERCUS RUBRA (RED OAK), 2-1/2" CALIPER, BALLED AND BURLAPPED	EACH	5	5				
A2007253	TREE, ROBINIA PSEUDACACIA CHICAGO BLUES (CHICAGO BLUES BLACK LOCUST), 3" CALIPER, BALLED AND BURLAPPED.	EACH	15	15				
A2007624	TREE, TAXODIUM DISTICHUM (COMMON BALD CYPRESS), 3" CALIPER, BALLED AND BURLAPPED	EACH	5	5				
A2007924	TREE, TILIA AMERICANA REDMOND (REDMOND AMERICAN LINDEN), 3" CALIPER, BALLED AND BURLAPPED	EACH	10	10				

SUMMARY OF QUANTITIES			URBAN 100% STATE CONSTRUCTION TYPE CODE					
CODE NO	ITEM	UNIT	TOTAL QUANTITIES					
				0031				
A2008517	TREE, ULMUS JAPONICA X WILSONIANA MORTON (ACCOLADE ELM), 2-1/2" CALIPER, BALLED AND BURLAPPED	EACH	22	22				
A2008750	TREE, ULMUS X PATRIOT (PATRIOT ELM), 3" CALIPER, TREE FORM, BALLED AND BURLAPPED	EACH	7	7				
B2000124	TREE, ACER CAMPESTRE (HEDGE MAPLE), 3" CALIPER, TREE FORM, BALLED AND BURLAPPED	EACH	2	2				
B2000668	TREE, AMELANCHIER X GRANDIFLORA (APPLE SERVICEBERRY), 7' HEIGHT, SHRUB FORM, BALLED AND BURLAPPED	EACH	6	6				
B2001168	TREE, CERCIS CANADENSIS (EASTERN REDBUD), 7' HEIGHT, CLUMP FORM, BALLED AND BURLAPPED	EACH	5	5				
B2004120	TREE, MALUS PRAIRIFIRE (PRAIRIFIRE CRABAPPLE), 2-1/2" CALIPER, TREE FORM, BALLED AND BURLAPPED	EACH	3	3				
B2004520	TREE, MALUS RED JEWEL (RED JEWEL CRAB APPLE), 2-1/2" CALIPER, TREE FORM, BALLED AND BURLAPPED	EACH	3	3				
B2005423	TREE, PRUNUS VIRGINIANA CANADA RED (CANADA RED CHERRY), 2-1/2" CALIPER, TREE FORM, BALLED AND BURLAPPED	EACH	8	8				

FILE NAME *	USER NAME * detroit	DESIGNED -	REVISED -	STATE OF ILLINOIS DEPARTMENT OF TRANSPORTATION	SUMMARY OF QUANTITIES	F.A.I. RTE.	SECTION	COUNTY	TOTAL SHEETS	SHEET NO.
90/94/290	2013-059LS	60X37	10			4				
SCALE: _____ SHEET NO. _____ OF _____ SHEETS STA. _____ TO STA. _____						CONTRACT NO. 60X37				
FED. ROAD DIST. NO. 1 ILLINOIS FED. AID PROJECT										

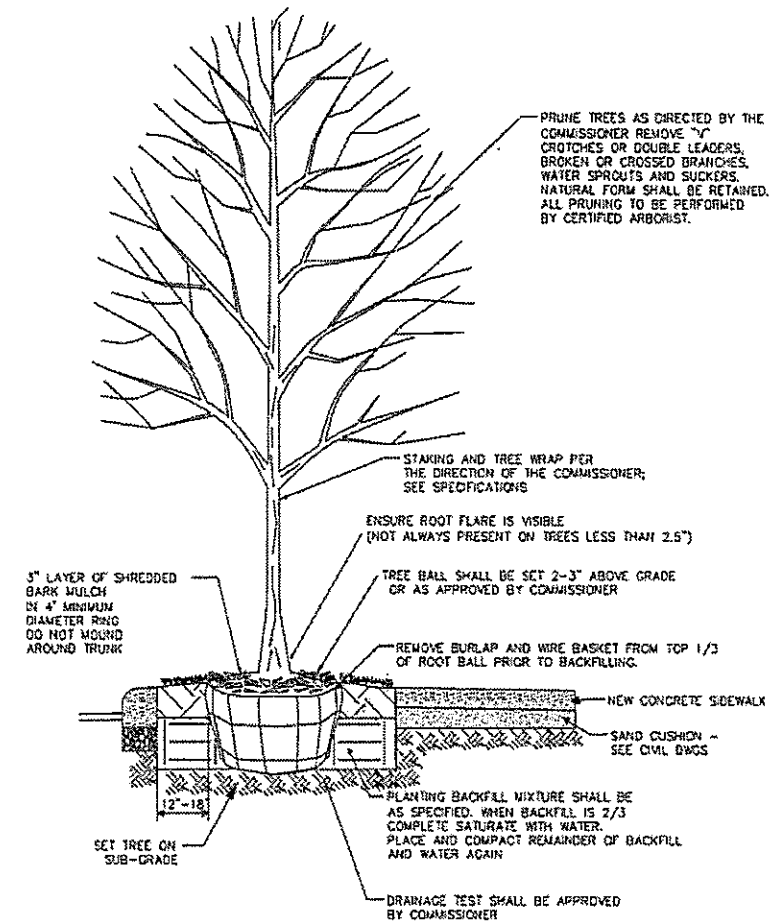
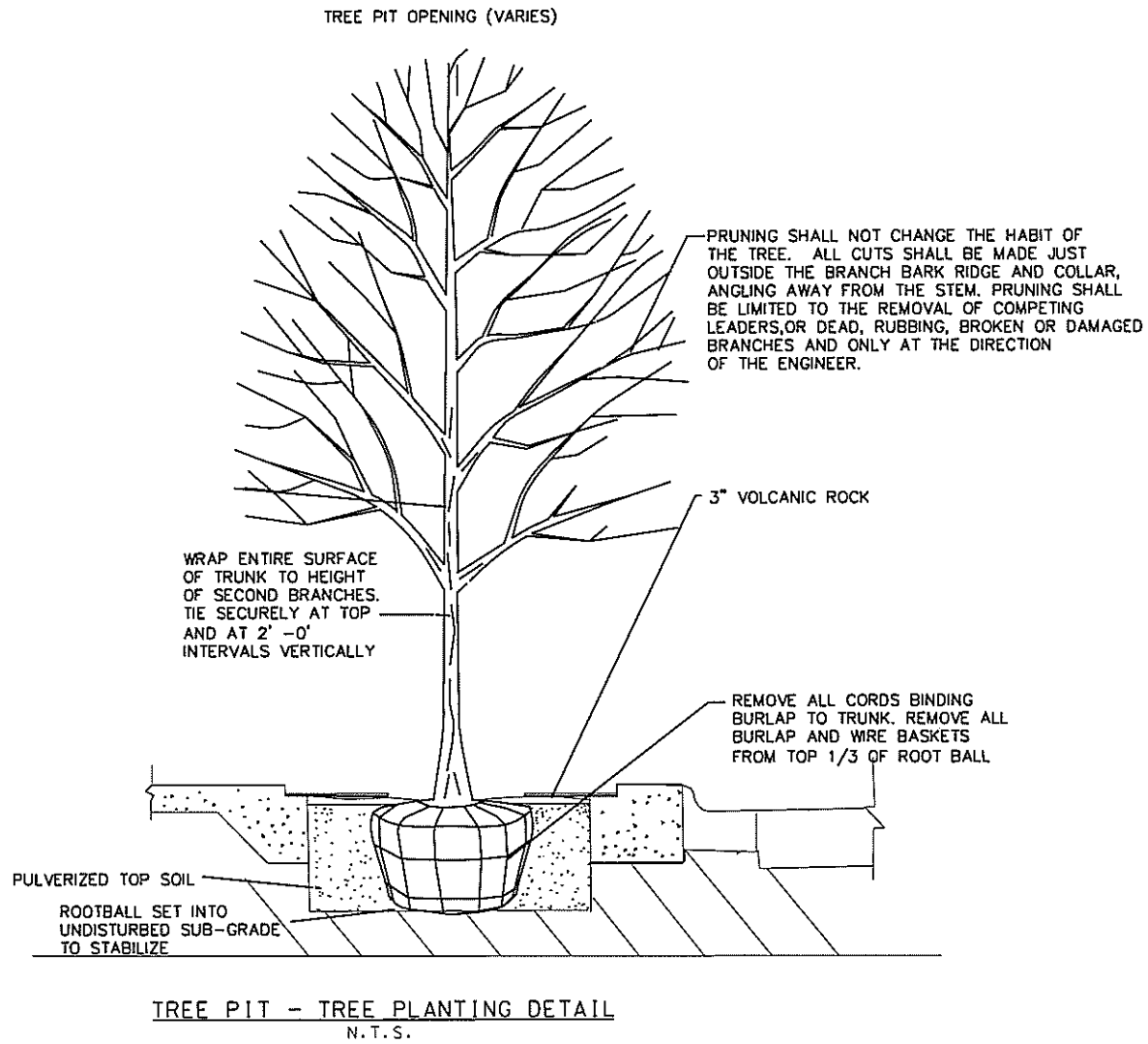
URBAN  
100%  
STATE

SUMMARY OF QUANTITIES				CONSTRUCTION TYPE CODE							SUMMARY OF QUANTITIES				CONSTRUCTION TYPE CODE																
CODE NO	ITEM	UNIT	TOTAL QUANTITIES								CODE NO	ITEM	UNIT	TOTAL QUANTITIES																	
				0031																											
B2006320	TREE, SYRINGA RETICULATA (IVORY SILK (IVORY SILK JAPANESE TREE LILAC), 2-1/2" CALIPER, TREE FORM, BALLED AND BURLAPPED	EACH	8	8																											
X2010400	STUMP REMOVAL ONLY	UNITY	50	50																											

2

**TREE PLANTING LOCATIONS**

ADDRESS NUMBER	STREET	QUANTITY	TYPE	TREE REMOVAL (UNIT)			EXISTING TREE	REPLACEMENT TREE	SIZE	QUANTITY
				UNDER 6"	6 TO 15"	OVER 15"				
646	W ADAMS	2	OPEN TREE PIT	8			ASH 4"/PEAR 4"	CHICAGO BLUES BLACK LOCUST	3.0"	2
500	S CLINTON	3	OPEN TREE PIT	15			ASH 4-6"	HERITAGE OAK	2.5"	3
506	S CLINTON	3	OPEN TREE PIT	15			ASH 4-6"	EXPRESSO KENTUCKY COFFEETREE	3.0"	3
810	S CLINTON	1	PARKWAY				TREE HAS BEEN REMOVED	PATRIOT ELM	3.0"	1
2	S DESPLAINES	2	OPEN TREE PIT		20		ASH 6-12"	HACKBERRY	3.0"	2
4	S DESPLAINES	3	OPEN TREE PIT		30		ASH 6-12"	HERITAGE OAK	2.5"	3
2	N GREEN	2	OPEN TREE PIT		12		ASH 6"	CHINKAPIN OAK	2.5"	2
14	N GREEN	3	OPEN TREE PIT		18		ASH 6"	HERITAGE OAK	2.5"	3
16	N GREEN	2	OPEN TREE PIT		12		ASH 6"	SPAETHII ALDER	2.5"	2
130	S GREEN	1	OPEN TREE PIT		6		MAPLE 6"	EXPRESSO KENTUCKY COFFEETREE	3.0"	1
1345	S GRENSHAW	1	PARKWAY	3			PEAR 3"	CHINKAPIN OAK	2.5"	1
724	S JEFFERSON	1	OPEN TREE PIT				TREE HAS BEEN REMOVED	CHICAGO BLUES BLACK LOCUST	3.0"	1
728	S JEFFERSON	1	OPEN TREE PIT				TREE HAS BEEN REMOVED	STREET KEEPER HONEYLOCUST	2.5"	1
740	S JEFFERSON	2	OPEN TREE PIT	6			LINDEN 3"	EXPRESSO KENTUCKY COFFEETREE	3.0"	2
748	S JEFFERSON	1	OPEN TREE PIT				TREE HAS BEEN REMOVED	CHICAGO BLUES BLACK LOCUST	3.0"	1
750	S JEFFERSON	2	OPEN TREE PIT	6			LINDEN 3"	CHICAGO BLUES BLACK LOCUST	3.0"	2
1118	S JEFFERSON	2	OPEN TREE PIT				TREE HAS BEEN REMOVED	CHICAGO BLUES BLACK LOCUST	3.0"	2
620	W MADISON	1	OPEN TREE PIT	4			ASH 4"	EXPRESSO KENTUCKY COFFEETREE	3.0"	1
836	W MADISON	1	OPEN TREE PIT		8		ASH 8"	EXPRESSO KENTUCKY COFFEETREE	3.0"	1
850	W MADISON	1	OPEN TREE PIT	5			ASH 5"	EXPRESSO KENTUCKY COFFEETREE	3.0"	1
933	W MADISON	4	OPEN TREE PIT				TREE HAS BEEN REMOVED	EXPRESSO KENTUCKY COFFEETREE	3.0"	1
616	W MONROE	1	OPEN TREE PIT	3			PEAR 3"	IVORY SILK JAPANESE TREE LILAC	2.5"	4
643	W MONROE	2	OPEN TREE PIT				TREE HAS BEEN REMOVED	CHICAGO BLUES BLACK LOCUST	3.0"	1
618	S RACINE	1	OPEN TREE PIT		8		ASH 8"	EXPRESSO KENTUCKY COFFEETREE	3.0"	2
1030	S RACINE	1	PARKWAY				TREE HAS BEEN REMOVED	HACKBERRY	3.0"	1
1100	W ROOSEVELT	4	OPEN TREE PIT	20			WHITE ASH 5"	CHINKAPIN OAK	2.5"	1
410	S SANGAMON	1	PARKWAY				TREE HAS BEEN REMOVED	EXPRESSO KENTUCKY COFFEETREE	3.0"	4
1329	W TAYLOR	1	OPEN TREE PIT				TREE HAS BEEN REMOVED	IVORY SILK JAPANESE TREE LILAC	2.5"	1
821	W VAN BUREN	1	OPEN TREE PIT	4			MAPLE 4"	CHICAGO BLUES BLACK LOCUST	3.0"	1
843	W VAN BUREN	1	OPEN TREE PIT				TREE HAS BEEN REMOVED	EXPRESSO KENTUCKY COFFEETREE	3.0"	1
858	W VAN BUREN	1	OPEN TREE PIT				TREE HAS BEEN REMOVED	CHICAGO BLUES BLACK LOCUST	3.0"	1
1061	W VAN BUREN	1	OPEN TREE PIT		6		ASH 6"	IVORY SILK JAPANESE TREE LILAC	2.5"	1
1300	W VAN BUREN	4	OPEN TREE PIT		48		ASH 10-14"	HERITAGE OAK	2.5"	4
1302	W VAN BUREN	4	OPEN TREE PIT		48		ASH 10-14"	CATALPA	3.0"	4
1354	W VAN BUREN	1	PARKWAY				ASH 10-14"	CHINKAPIN OAK	2.5"	1
640	W WASHINGTON	1	PARKWAY	4			HONEYLOCUST 4"	STREET KEEPER HONEYLOCUST	2.5"	1
1010-1022	S HALSTED	2	MEDIAN				TREE HAS BEEN REMOVED	CANADA RED CHOKECHERRY	2.5"	2
936-954	S HALSTED	4	MEDIAN		21		ASH 6-8"	CHINKAPIN OAK	2.5"	4
924	S HALSTED	1	MEDIAN				TREE HAS BEEN REMOVED	CHINKAPIN OAK	2.5"	1
912	S HALSTED	1	MEDIAN				TREE HAS BEEN REMOVED	CHINKAPIN OAK	2.5"	1
900-906	S HALSTED	2	MEDIAN				TREE HAS BEEN REMOVED	CHINKAPIN OAK	2.5"	2
894	S HALSTED	1	MEDIAN				TREE HAS BEEN REMOVED	CHINKAPIN OAK	2.5"	1
752	S HALSTED	1	MEDIAN		8		ASH 8"	PATRIOT ELM	3.0"	1
660-668	S HALSTED	4	MEDIAN				TREE HAS BEEN REMOVED	CANADA RED CHOKECHERRY	2.5"	4
950	W ROOSEVELT	1	MEDIAN				TREE HAS BEEN REMOVED	EXPRESSO KENTUCKY COFFEETREE	3.0"	1
1354-1330-1248	W ROOSEVELT	3	MEDIAN				TREE HAS BEEN REMOVED	GLENLEVEN LITTLELEAF LINDEN	3.0"	3



FILE NAME =	USER NAME = delrosarios	DESIGNED - _____	REVISED - _____	<b>STATE OF ILLINOIS DEPARTMENT OF TRANSPORTATION</b>	<b>TREE PLANTING DETAILS</b>	F.A.I. RTE.	SECTION	COUNTY	TOTAL SHEETS	SHEET NO.	
c:\pwwork\pwwork\delrosarios\20365807	D127814-shr-landscape.dgn	DRAWN - _____	REVISED - _____			90/94/290	2013-059LS	COOK	10	7	
Default	PLOT SCALE = 1/2" = 1' / in.	CHECKED - _____	REVISED - _____			<b>CONTRACT NO. 60X37</b>					
	PLOT DATE = 10/31/2013	DATE - _____	REVISED - _____			ILLINOIS FED. AID PROJECT					
					SCALE: _____	SHEET _____ OF _____ SHEETS		STA. _____ TO STA. _____			



**Illinois Department of Transportation**

**TREE REMOVAL AND TREE PLANTING  
WORK ORDER  
CONTRACT 60X37**

Work Order Number:

Date Work Order Issued:

Location:

CDOT

UIC

**WORK INCLUDED IN THIS WORK ORDER**

TREE REMOVAL		Stump Removal Only (X2010400)	TREE PLANTING		
6" - 15" (20100110)	>15" (20100110)		Pay Code	Pay Item	Tree Planting in Structures

Special Instruction:

**TOTAL QUANTITY**

Tree tap... to measure... trees.

**SAMPLE**

AGREEMENT TO WORK

**AGREEMENT TO WORK**

Contractor Name (Printed)

IDOT Resident Engineer/Technician Signature Date

CDOT/UIC Representative Signature Date

Contractor Signature Date

**CERTIFICATION OF COMPLETED WORK**

I certify that the work order has been completed in conformance with contract requirements.

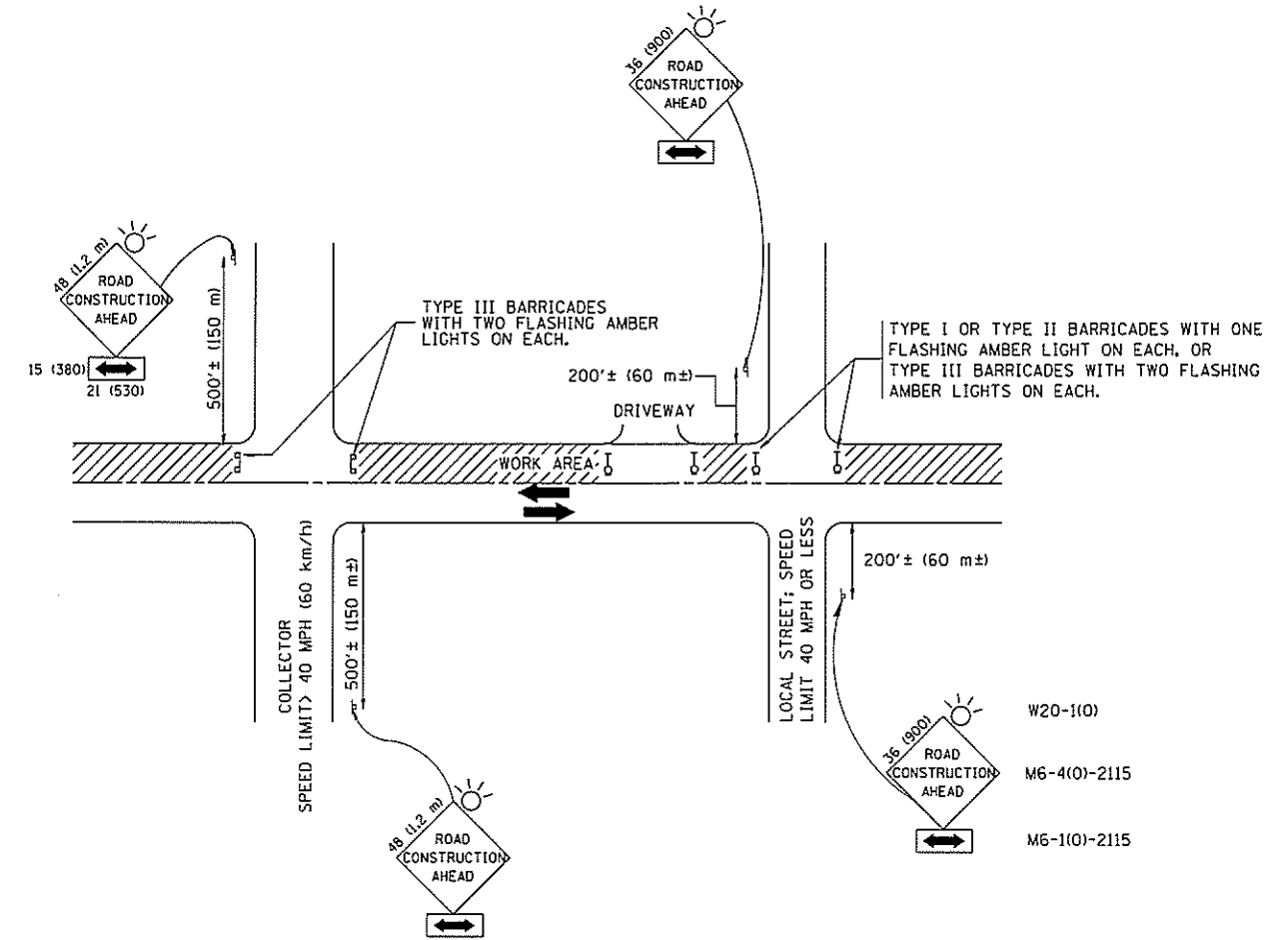
**INSPECTION AND ACCEPTANCE OF COMPLETED WORK**

Contractor Signature Date

IDOT Resident Engineer/Technician Signature Date

THIS WORK ORDER IS A SAMPLE FORM ONLY.





TRAFFIC CONTROL AND PROTECTION FOR SIDE ROADS, INTERSECTIONS, AND DRIVEWAYS

NOTES:

- A. FOR NO LANE RESTRICTION ON THE SIDE ROAD OR DRIVEWAYS
  1. SIDE ROAD WITH A SPEED LIMIT OF 40 MPH (60 km/h) OR LESS AS SHOWN ON THE DRAWING AND AS DIRECTED BY THE ENGINEER:
    - a) ONE ROAD CONSTRUCTION AHEAD SIGN 36 x 36 (900x900) WITH A FLASHER AND FLAG MOUNTED ON IT APPROXIMATELY 200' (60 m) IN ADVANCE OF THE MAIN ROUTE.
    - b) THE CLOSED PORTION OF THE MAIN ROUTE SHALL BE PROTECTED BY BLOCKING WITH TYPE I, TYPE II OR TYPE III BARRICADES, 1/3 OF THE CROSS SECTION OF THE CLOSED PORTION.
  2. SIDE ROAD WITH A SPEED LIMIT GREATER THAN 40 MPH (60 km/h) AS SHOWN ON THE DRAWING AND AS DIRECTED BY THE ENGINEER:
    - a) ONE ROAD CONSTRUCTION AHEAD SIGN 48 x 48 (1.2 m x 1.2 m) WITH A FLASHER MOUNTED ON IT APPROXIMATELY 500' (150 m) IN ADVANCE OF THE MAIN ROUTE.
    - b) THE CLOSED PORTION OF THE MAIN ROUTE SHALL BE PROTECTED BY BLOCKING WITH TYPE III BARRICADES, 1/2 OF THE CROSS SECTION OF THE CLOSED PORTION.
- 3. WHEN THE SIDE ROAD LIES BETWEEN THE BEGINNING OF THE MAINLINE SIGNING AND THE WORK ZONE, A SINGLE HEADED ARROW (M6-1) SHALL BE USED IN LIEU OF THE DOUBLE HEADED ARROW (M6-4).
- B. FOR A LANE CLOSURE ON A SIDE ROAD OR DRIVEWAY:
 

USE APPLICABLE PORTIONS OF THE TYPICAL APPLICATION OF TRAFFIC CONTROL DEVICES (STD. 701501, STD. 701606 OR THE APPROPRIATE STANDARD). THE SPACING OF SIGNS AND BARRICADES SHALL BE ADJUSTED FOR FIELD CONDITIONS AS DIRECTED BY THE ENGINEER. THE DIRECTIONAL ARROW SHALL BE COVERED OR REMOVED WHEN NO LONGER CONSISTENT WITH THE SIDE ROAD LANE CLOSURE.
- C. ADVANCE WARNING SIGNS ARE TO BE OMITTED ON DRIVEWAY UNLESS OTHERWISE NOTED.
- D. THE TRAFFIC CONTROL AND PROTECTION FOR SIDE ROADS, INTERSECTIONS, AND DRIVEWAYS SHALL BE INCIDENTAL TO THE COST OF SPECIFIED TRAFFIC CONTROL STANDARDS OR ITEMS.

All dimensions are in millimeters (inches) unless otherwise shown.

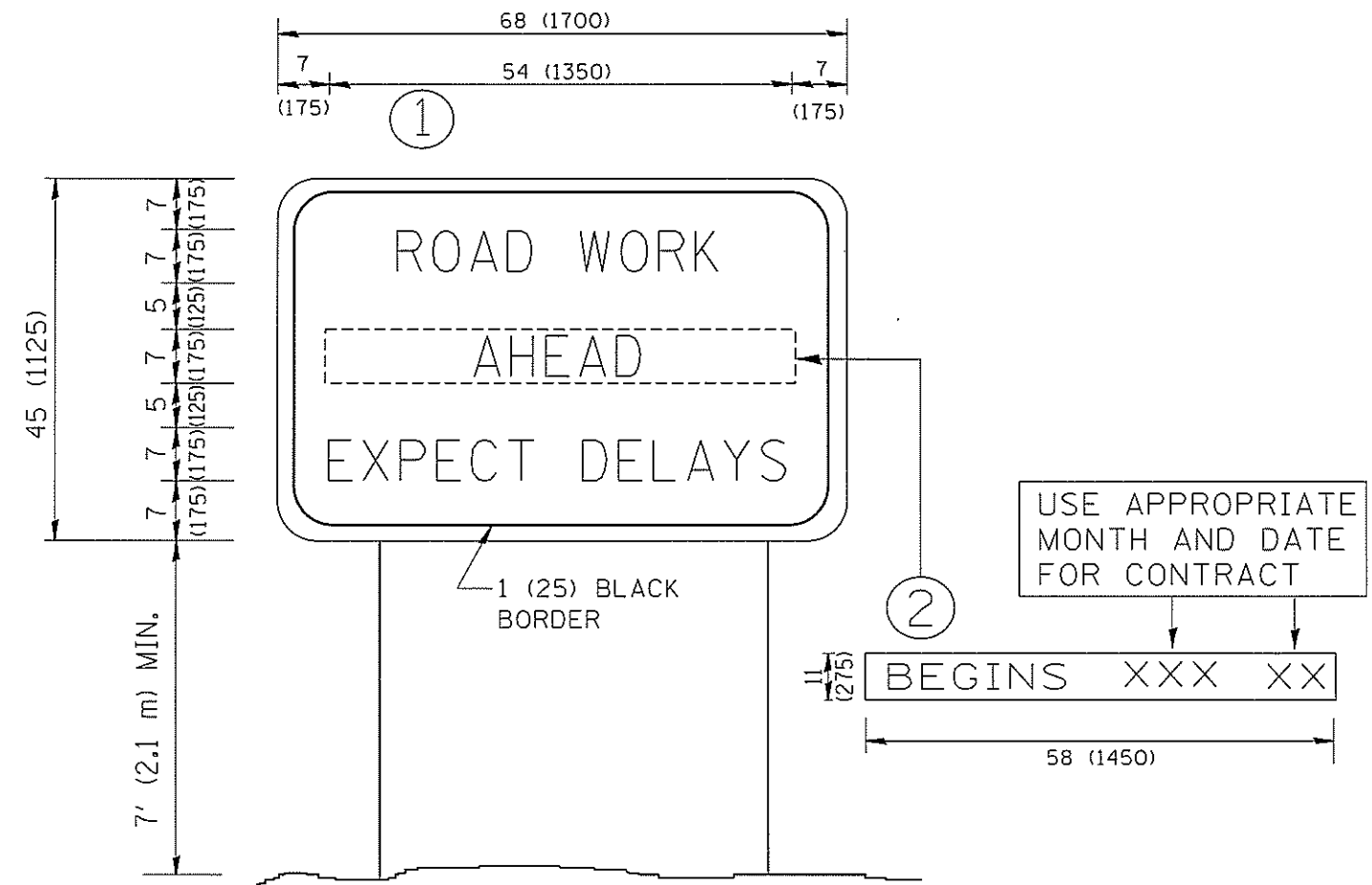
FILE NAME = W:\data\td\22x34\1c10.dgn	USER NAME = goglianobt	DESIGNED - LHA	REVISED - J. OBERLE 10-18-95
		DRAWN -	REVISED - A. HOUSEH 03-06-96
		PLOT SCALE = 50,000' / IN.	REVISED - A. HOUSEH 10-15-96
		PLOT DATE = 1/4/2008	REVISED - T. RAMMACHER 01-06-00
		CHECKED -	
		DATE - 06-89	

STATE OF ILLINOIS  
DEPARTMENT OF TRANSPORTATION

TRAFFIC CONTROL AND PROTECTION FOR  
SIDE ROADS, INTERSECTIONS, AND DRIVEWAYS

SCALE: NONE SHEET NO. 1 OF 1 SHEETS STA. TO STA.

F.A.I. RTE.	SECTION	COUNTY	TOTAL SHEETS	SHEET NO.
99/4/2/0	2013-05A15	COOK	10	9
TC-10		CONTRACT NO. 60X37		
FED. ROAD DIST. NO. 1 ILLINOIS FED. AID PROJECT				



**NOTES:**

1. USE BLACK LETTERING ON ORANGE BACKGROUND.
2. ERECT SIGNS IN ADVANCE OF THE LOCATION FOR THE "ROAD CONSTRUCTION AHEAD" SIGN AT LOCATIONS AS DIRECTED BY THE ENGINEER.
3. ERECT SIGN ① WITH INSTALLED PANEL ② ONE WEEK PRIOR TO THE START OF CONSTRUCTION.
4. REMOVE PANEL ② SOON AFTER THE START OF CONSTRUCTION.
5. SEE SPECIAL PROVISION FOR "TEMPORARY INFORMATION SIGNING" FOR ADDITIONAL INFORMATION.
6. ONE SIGN ASSEMBLY EQUALS 25.70 SQ. FT. (2.3 SQ. M.)
7. SHALL BE PAID FOR AS TEMPORARY INFORMATION SIGNING.

ALL DIMENSIONS ARE IN INCHES (MILLIMETERS) UNLESS OTHERWISE SHOWN.

FILE NAME = W:\distatd\22x34\ts22.dgn	USER NAME = gaglienabt	DESIGNED -	REVISED - R. MIRS 09-15-97
		DRAWN -	REVISED - R. MIRS 12-11-97
	PLOT SCALE = 50.000' / IN.	CHECKED -	REVISED - T. RAMMACHER 02-02-99
	PLOT DATE = 1/4/2008	DATE -	REVISED - C. JUCIUS 01-31-07

STATE OF ILLINOIS  
DEPARTMENT OF TRANSPORTATION

ARTERIAL ROAD  
INFORMATION SIGN

SCALE: NONE SHEET NO. 1 OF 1 SHEETS STA. TO STA.

F.A.I. RTE.	SECTION	COUNTY	TOTAL SHEETS	SHEET NO.
174/20	2013-059LS		10	10
TC-22		CONTRACT NO. 60X57		
FED. ROAD DIST. NO. 1 ILLINOIS FED. AID PROJECT				