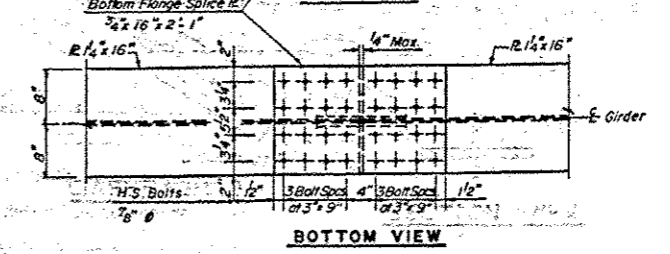
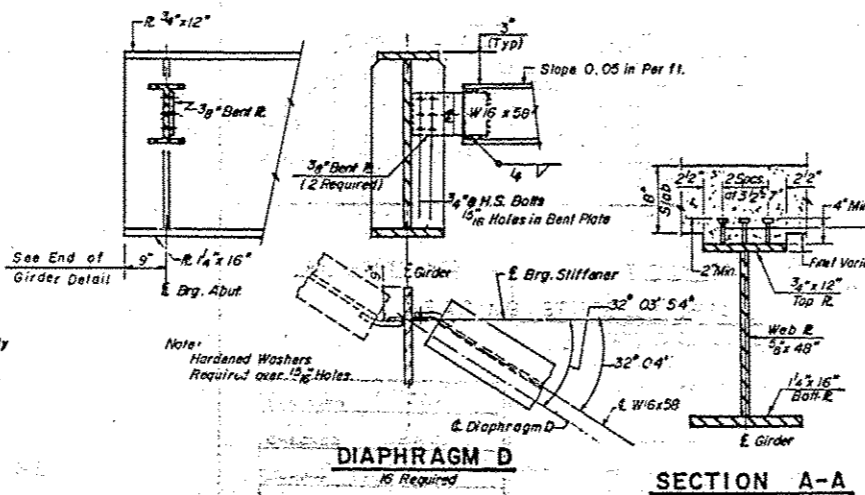
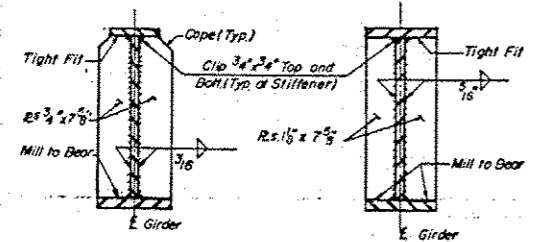
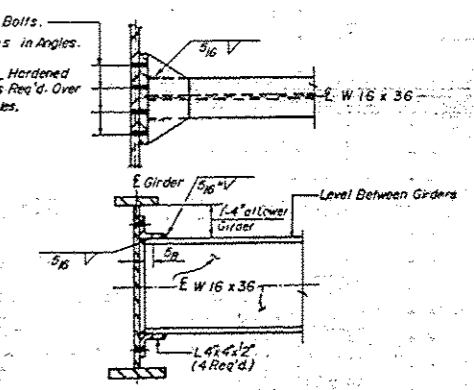
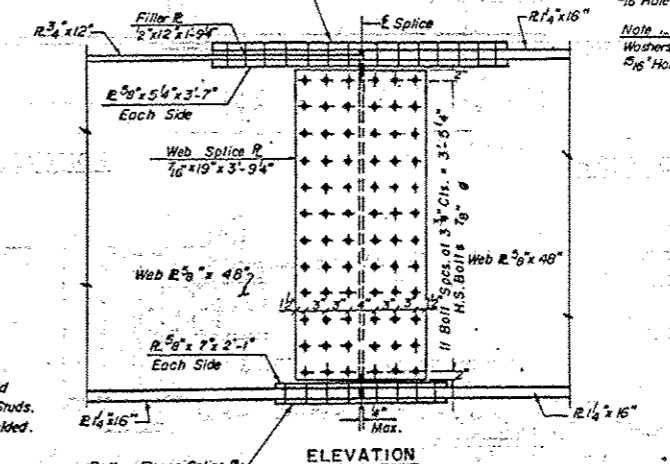
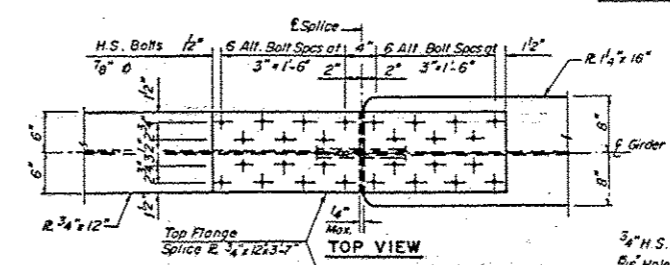
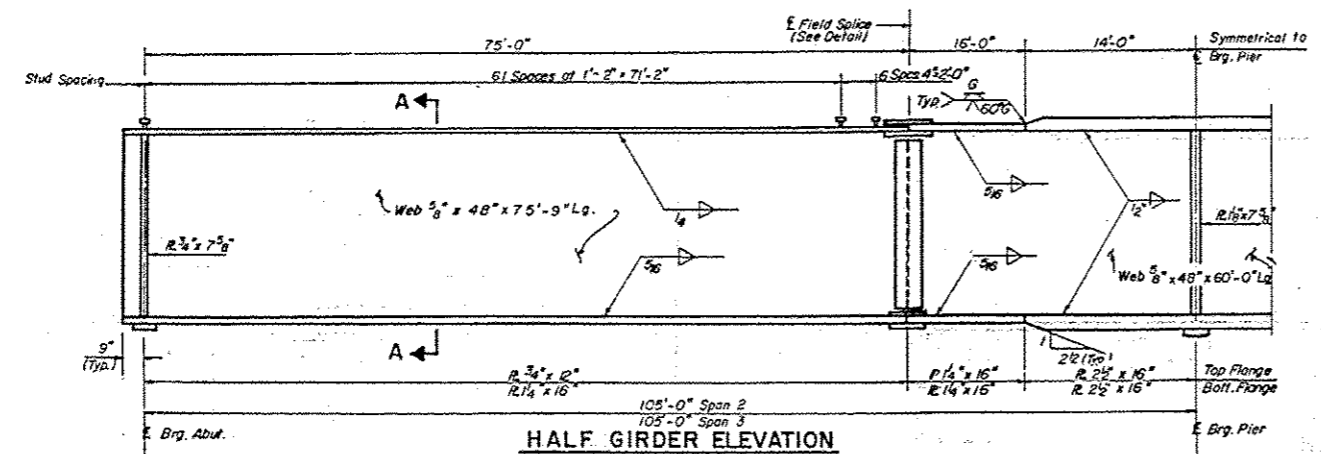
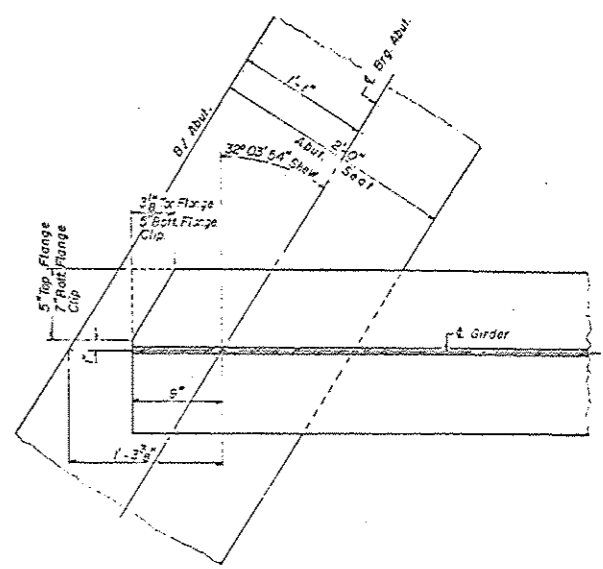
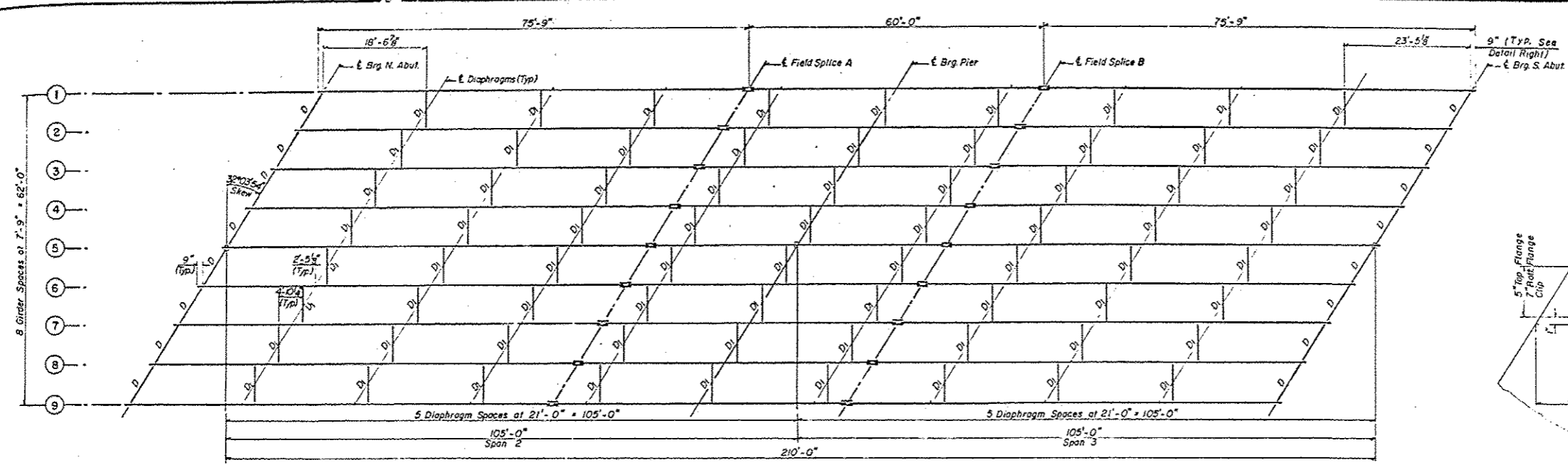


DESIGNED	195-1	SECTION	WHITESIDE	COUNTY	ILLINOIS	SHEET NO.	9
CHECKED	403	SECTION	195-1	COUNTY	WHITESIDE	TOTAL SHEETS	16
DRAWN	HB-3	SECTION	2.4.5	COUNTY	131		
CHECKED		SECTION		COUNTY			



DESIGNED	K.M.C.
CHECKED	K.M.C.
DRAWN	G. GRATZ
CHECKED	[Signature]

NOTE: For Detail of Bearing Assembly See Sheet No. 10

Note: Hardened Washers Required over 5/16" Holes.

3/8" Granular or Solid Flux Filled Headed Studs. Automatically and Welded. (3672 Required)

ILLINOIS DEPARTMENT OF TRANSPORTATION  
**STRUCTURAL STEEL**  
 FA 403 SECTION 195-1HB-3  
 CH. ROUTE 13 OVER FA 403  
 WHITESIDE COUNTY  
 STATION 1198 + 69.26

FILE NAME:	USER NAME: dssdd	DESIGNED: -	REVISED: -	<b>STATE OF ILLINOIS DEPARTMENT OF TRANSPORTATION</b>	<b>EXISTING PLANS</b>	F.A.I. RTE.	SECTION	COUNTY	TOTAL SHEETS	SHEET NO.	
D:\BR\Draws\Whiteside\64J09 Cleaning & Painting SN 070-0057 & SN 089-0043\CA00\028	ORAWN: dsn	REVISED: -	REVISED: -			88	02 BRIDGE PAINTING 2014-2	WHITESIDE	9	90	
PLOT SCALE: 1/8" = 1'-0"	CHECKED: -	REVISED: -	REVISED: -			CONTRACT NO. 64J09					
PLOT DATE: 1 Feb Nov 08 08:10:47 2013	DATE: -	REVISED: -	REVISED: -			ILLINOIS FED. AID PROJECT					