

STATE OF ILLINOIS
DEPARTMENT OF TRANSPORTATION
DIVISION OF HIGHWAYS

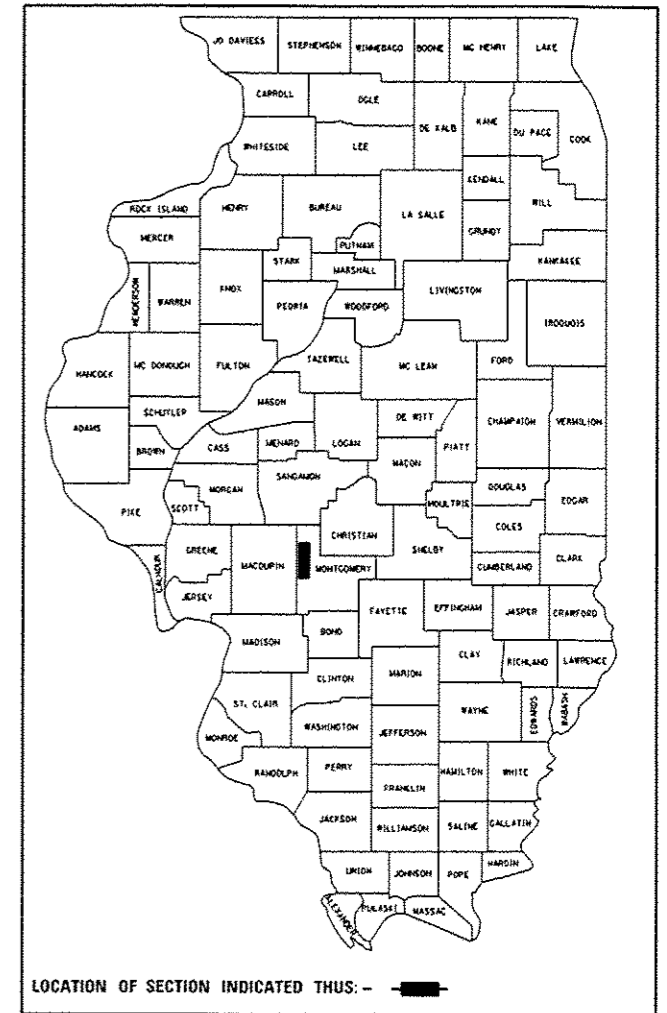
PROPOSED CONTRACT MAINTENANCE

FOR INDEX OF SHEETS, SEE SHEET NO. 2

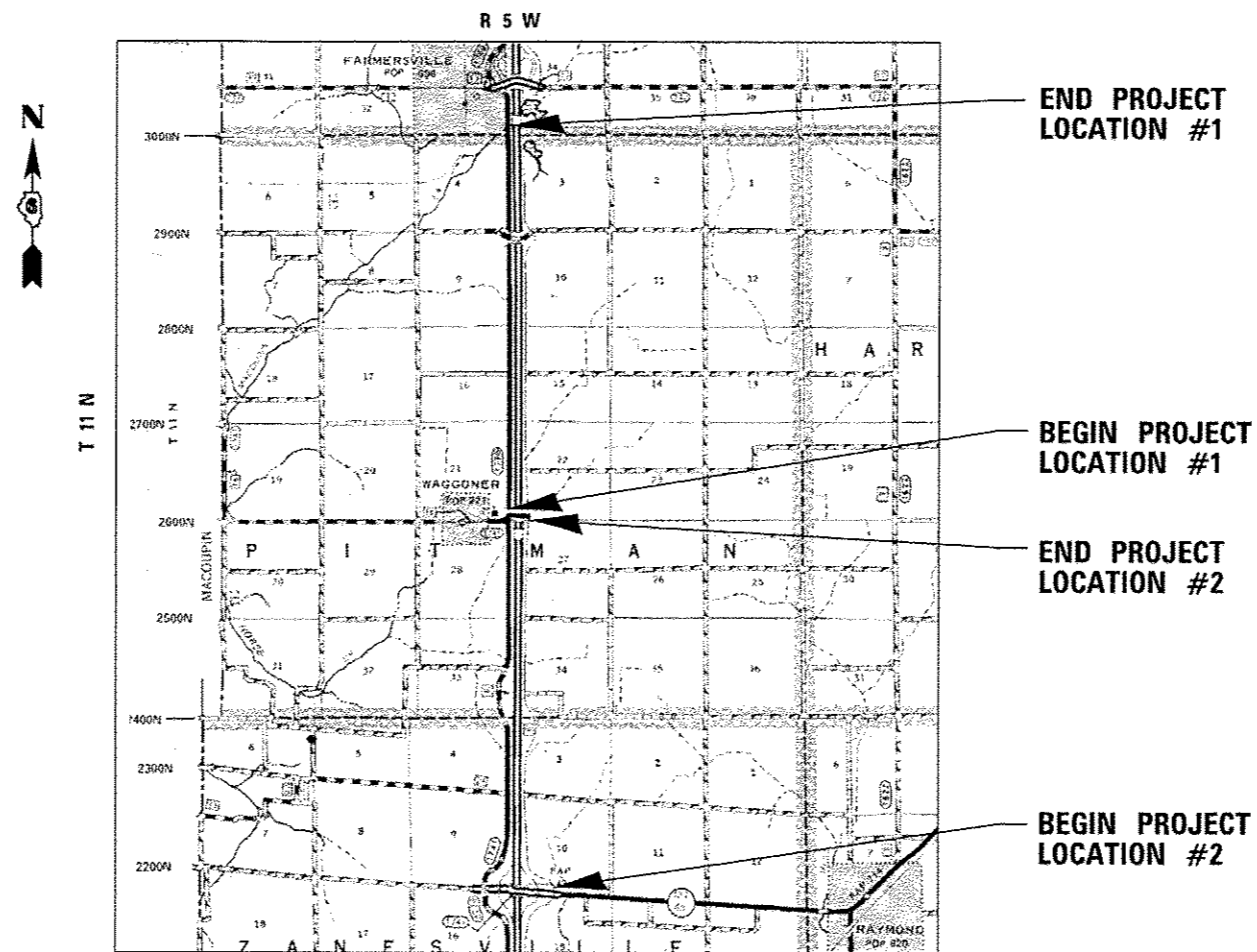
FAS 1769/FAI 55 FR 13.00 (FR I-55 W & E)
(68-3 & 4) & (112)Q-1
PROJECT BIT. SURF. TREATMENT (A-1)
MONTGOMERY COUNTY

F.A.S./F.A.I. RTE.	SECTION	COUNTY	TOTAL SHEETS	SHEET NO.
1769/55 FR 13.00	(68-3 & 4) & (112)Q-1	MONTGOMERY	6	1
FED. ROAD DIST. NO.	ILLINOIS	CONTRACT NO. 72G22		

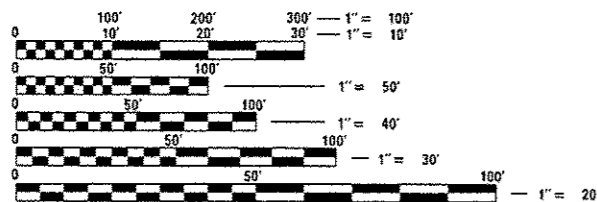
D-96-058-13



C-96-058-13



ADT = 600
SU = 30
MU = 10



FULL SIZE PLANS HAVE BEEN PREPARED USING STANDARD ENGINEERING SCALES. REDUCED SIZED PLANS WILL NOT CONFORM TO STANDARD SCALES. IN MAKING MEASUREMENTS ON REDUCED PLANS, THE ABOVE SCALES MAY BE USED.

J.U.L.I.E.
JOINT UTILITY LOCATION INFORMATION FOR EXCAVATION
1-800-892-0123
OR 811

PLAN AND CONTRACT TECHNICIAN
TIMOTHY SHARP (217)782-7743

CONTRACT NO. 72G22

LOCATION #1 NET LENGTH = 21,490.00 FT. = 4.070 MILES
LOCATION #2 NET LENGTH = 22,018.00 FT. = 4.170 MILES

STATE OF ILLINOIS
DEPARTMENT OF TRANSPORTATION
DIVISION OF HIGHWAYS

SUBMITTED October 13 2013
Rep. Z. D. [Signature]
DEPUTY DIRECTOR OF HIGHWAYS, REGION ENGINEER

Dec 6 2013
John D. Baranzelli P.E. [Signature]
ENGINEER OF DESIGN AND ENVIRONMENT

Dec 6 2013
Omer Osman P.E. [Signature]
DIRECTOR OF HIGHWAYS, CHIEF ENGINEER

PRINTED BY THE AUTHORITY
OF THE STATE OF ILLINOIS