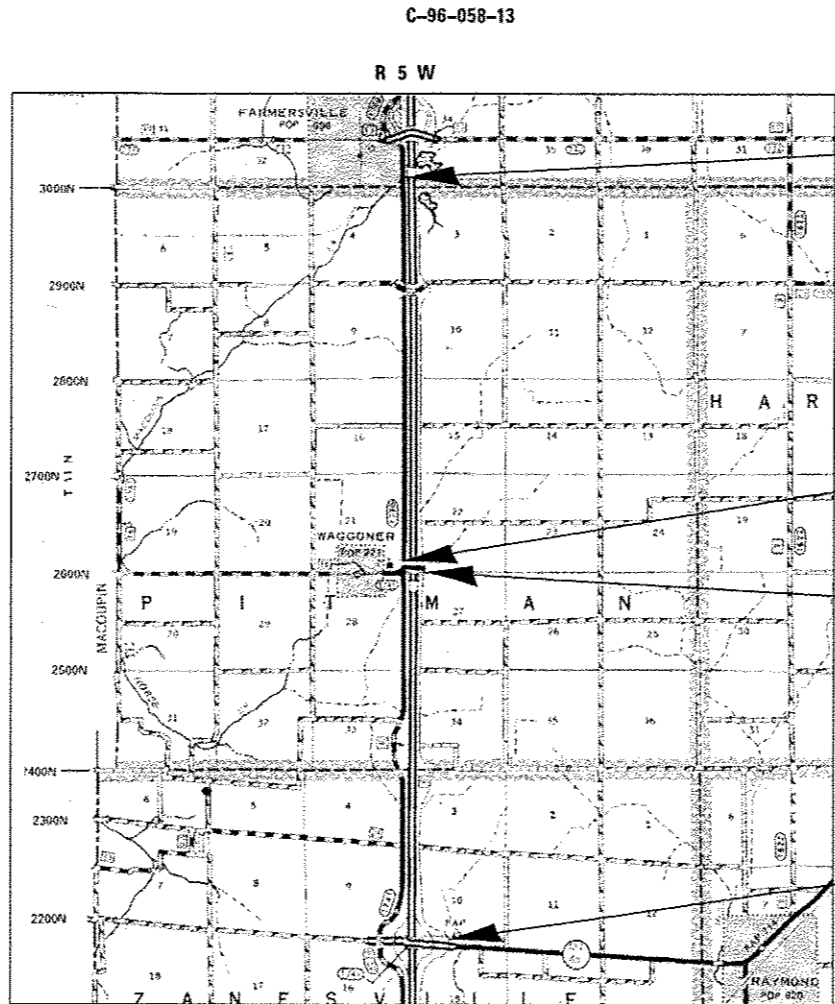
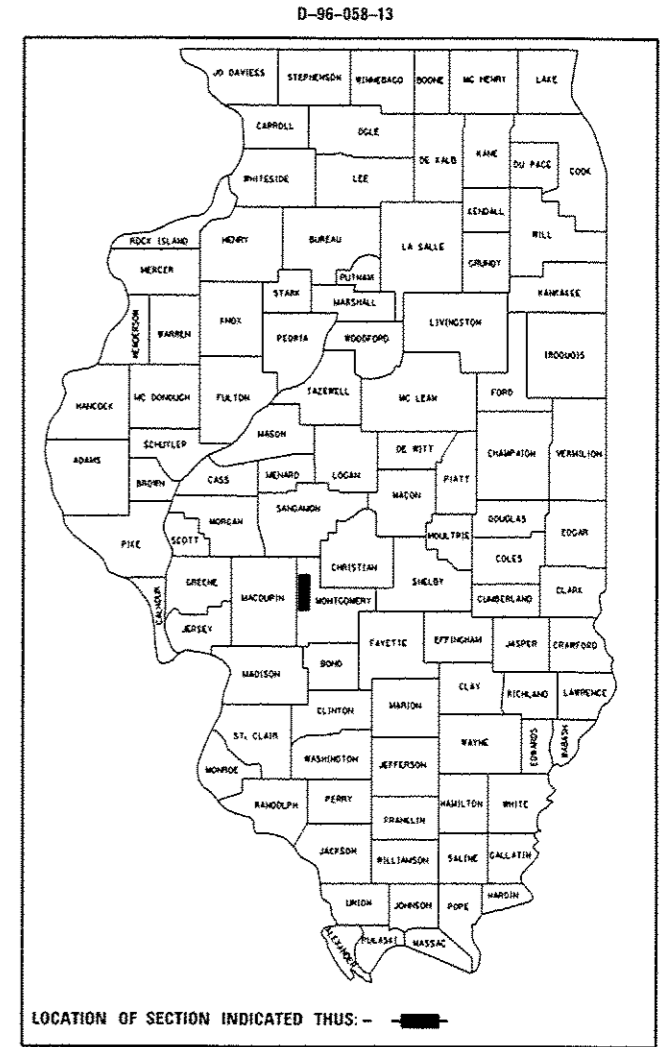


**STATE OF ILLINOIS**  
**DEPARTMENT OF TRANSPORTATION**  
**DIVISION OF HIGHWAYS**  
**PROPOSED**  
**CONTRACT MAINTENANCE**

FOR INDEX OF SHEETS, SEE SHEET NO. 2

**FAS 1769/FAI 55 FR 13.00 (FR I-55 W & E)**  
**(68-3 & 4) & (112)Q-1**  
**PROJECT BIT. SURF. TREATMENT (A-1)**  
**MONTGOMERY COUNTY**

F.A.S./F.A.I. RTE.	SECTION	COUNTY	TOTAL SHEETS	SHEET NO.
1769/55 FR 13.00	(68-3 & 4) & (112)Q-1	MONTGOMERY	6	1
FED. ROAD DIST. NO.	ILLINOIS	CONTRACT NO. 72G22		



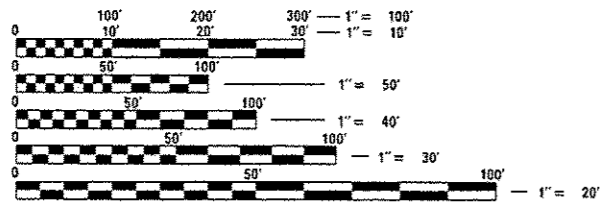
END PROJECT LOCATION #1

BEGIN PROJECT LOCATION #1

END PROJECT LOCATION #2

BEGIN PROJECT LOCATION #2

ADT = 600  
 SU = 30  
 MU = 10



FULL SIZE PLANS HAVE BEEN PREPARED USING STANDARD ENGINEERING SCALES. REDUCED SIZED PLANS WILL NOT CONFORM TO STANDARD SCALES. IN MAKING MEASUREMENTS ON REDUCED PLANS, THE ABOVE SCALES MAY BE USED.

J.U.L.I.E.  
 JOINT UTILITY LOCATION INFORMATION FOR EXCAVATION  
 1-800-892-0123  
 OR 811

PLAN AND CONTRACT TECHNICIAN  
 TIMOTHY SHARP (217)782-7743

CONTRACT NO. 72G22

LOCATION #1 NET LENGTH = 21,490.00 FT. = 4.070 MILES  
 LOCATION #2 NET LENGTH = 22,018.00 FT. = 4.170 MILES

STATE OF ILLINOIS  
 DEPARTMENT OF TRANSPORTATION  
 DIVISION OF HIGHWAYS

SUBMITTED October 13 2013  
Rep. Z. D. [Signature]  
 DEPUTY DIRECTOR OF HIGHWAYS, REGION ENGINEER

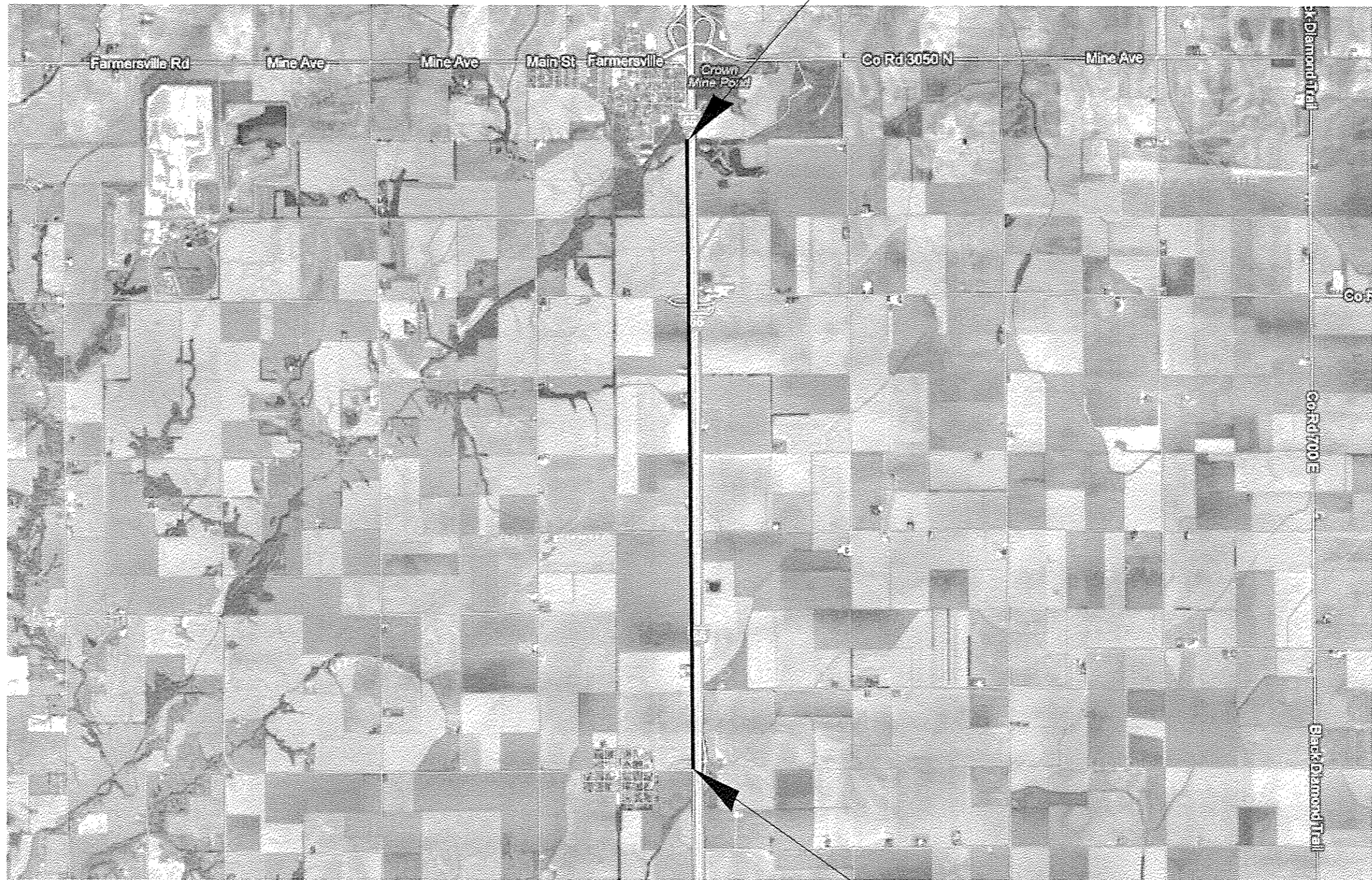
Dec 6 2013  
John D. Baranzelli P.E. [Signature]  
 acting ENGINEER OF DESIGN AND ENVIRONMENT

Dec 6 2013  
Omer Osman P.E. [Signature]  
 DIRECTOR OF HIGHWAYS, CHIEF ENGINEER

**PRINTED BY THE AUTHORITY  
 OF THE STATE OF ILLINOIS**







LOCATION #1

BEGIN PROJECT  
WEST FRONTAGE  
ROAD

FILE NAME *	USER NAME * aharpd	DESIGNED -	REVISED -
S:\CONTRACTS\172022 - FAS 1769 - 15	FR E & W - MONT. - SEAL COAT\location.mxd	DRAWN -	REVISED -
	PLOT SCALE = 1:8000 / in.	CHECKED -	REVISED -
Default	PLOT DATE = Sep-11-2013 06:55:05AM	DATE -	REVISED -

STATE OF ILLINOIS  
DEPARTMENT OF TRANSPORTATION

LOCATION MAP

F.A.S. RTE.	SECTION	COUNTY	TOTAL SHEETS	SHEET NO.
1769	(6B-3 & 4) & (112) 0-1	MONTGOMERY	6	4
CONTRACT NO. 72022				
ILLINOIS FED. AID PROJECT				

SCALE: SHEET 1 OF 1 SHEETS STA. TO STA.

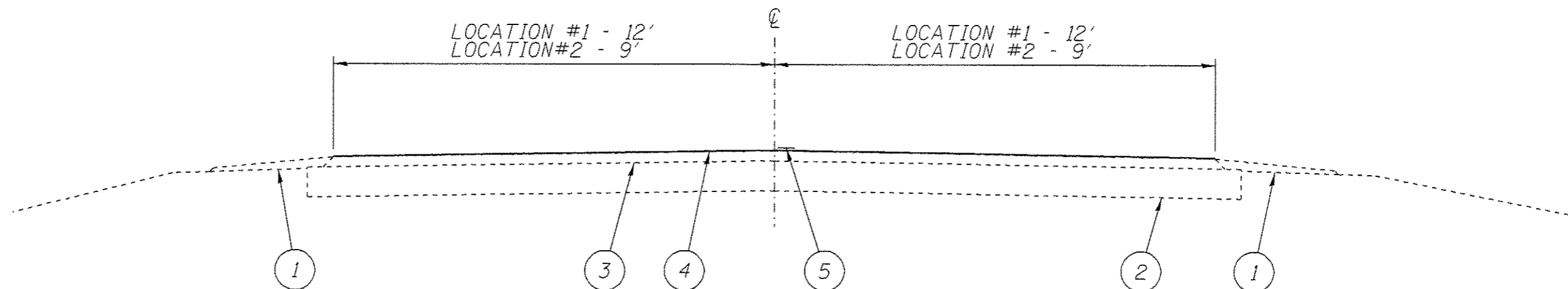
END PROJECT  
EAST FRONTAGE  
ROAD



LOCATION #2

BEGIN PROJECT  
EAST FRONTAGE  
ROAD

FILE NAME *	USER NAME *	DESIGNED -	REVISED -	<b>STATE OF ILLINOIS DEPARTMENT OF TRANSPORTATION</b>	<b>LOCATION MAP</b>		F.A.S. RTE.	SECTION	COUNTY	TOTAL SHEETS	SHEET NO.
S:\CONTRM\MAIN\CAD\72G22 - FAS 1769 - 15	FR E & W - MONT. - SERL COAT\location-map	DRAWN -	REVISED -				1769	(68-3 & 4) & (112) 0-1	MONTGOMERY	6	5
Default	PLOT SCALE * 1:8000 1/8 in.	CHECKED -	REVISED -		CONTRACT NO. 72G22			ILLINOIS FED. AID PROJECT			
	PLOT DATE * Sep-11-2013 06:52:29AM	DATE -	REVISED -		SCALE:	SHEET 1 OF 1 SHEETS	STA.	TO STA.			



WEST & EAST FRONTAGE ROADS

LEGEND

- 1 - EXIST. AGGREGATE SHOULDERS, TYPE B
- 2 - EXIST. STABILIZED OR CONCRETE BASE COURSE
- 3 - EXIST. BITUMINOUS SURFACE
- 4 - PROP. BITUMINOUS SURFACE TREATMENT (CLASS A-1)
- 5 - PROP. PAINT PAVEMENT MARKING - LINE 5"

FILE NAME *	USER NAME * shorptd	DESIGNED -	REVISED -	<b>STATE OF ILLINOIS DEPARTMENT OF TRANSPORTATION</b>	<b>TYPICAL SECTIONS</b>		F.A.S. RTE.	SECTION	COUNTY	TOTAL SHEETS	SHEET NO.
S:\CONTRMAINT\CAD\72022 - FAS 1769 - 18	FR E & W - MONT. - SEAL COAT\typsect.dgn	DRAWN -	REVISED -				1769	(68-3 & 4) & (112) D-1	MONTGOMERY	6	6
	PLOT SCALE * 3.0000' / in.	CHECKED -	REVISED -		SCALE: SHEET 1 OF 1 SHEETS STA. TO STA.		CONTRACT NO. 72022				
Default	PLOT DATE * Sep-11-2013 06:53:02AM	DATE -	REVISED -		ILLINOIS FED. AID PROJECT						