

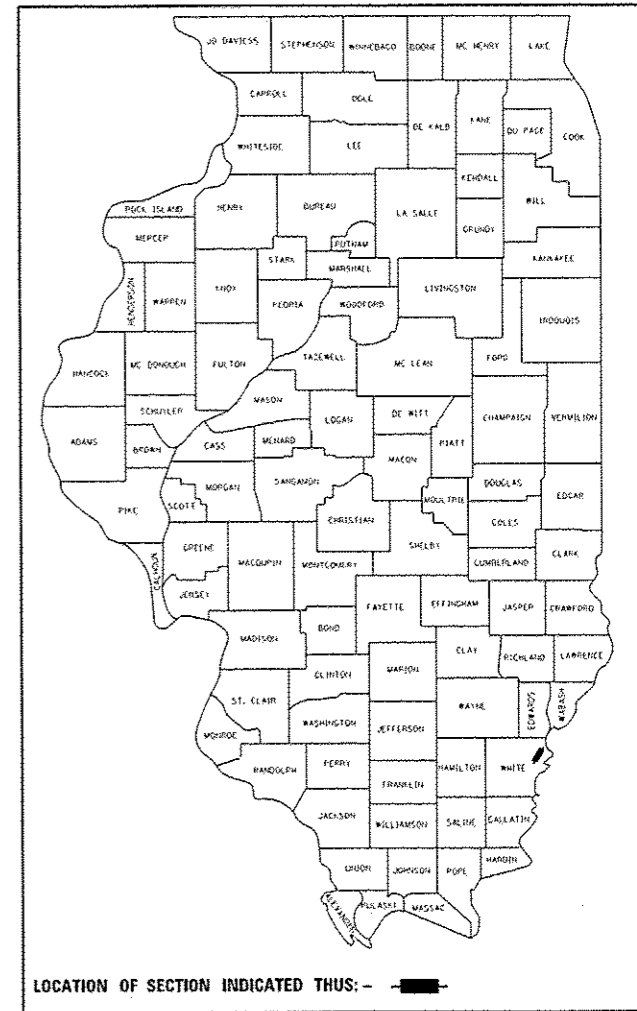
F.A.P. RTE.	SECTION	COUNTY	TOTAL SHEETS	SHEET NO.
332	5B-1	WHITE	51	1
		ILLINOIS	CONTRACT NO. 78266	

STATE OF ILLINOIS
DEPARTMENT OF TRANSPORTATION
DIVISION OF HIGHWAYS

**PROPOSED
HIGHWAY PLANS**

F.A.P. ROUTE 332 (IL ROUTE 1 /14)
SECTION 5B-1
PROJECT ACF-0332 (117)
WHITE COUNTY
C-99-054-11
STRUCTURE REPLACEMENT
IL 1 /14 OVER CROOKED CREEK

D-99-043-11



TRAFFIC DATA

FUNCTIONAL CLASSIFICATION:	OTHER PRINCIPAL ARTERIAL
DESIGN SPEED:	55 MPH
POSTED SPEED:	55 MPH
ADT:	4890 (2014)
	5960 (2034)
PV:	90.24%
TRUCKS:	9.76%

STATE OF ILLINOIS
DEPARTMENT OF TRANSPORTATION
DIVISION OF HIGHWAYS

SUBMITTED Oct 16 20 13

Jeffrey Z...
DEPUTY DIRECTOR OF HIGHWAYS, REGION ENGINEER

Dec 6 20 13
John D. Baranzelli, P.E.
ENGINEER OF DESIGN AND ENVIRONMENT

Dec 6 20 13
Omer Osman, P.E.
DIRECTOR OF HIGHWAYS, CHIEF ENGINEER

**PRINTED BY THE AUTHORITY
OF THE STATE OF ILLINOIS**

INDEX OF SHEETS

SHEET NO.	DESCRIPTION
1.	COVER SHEET
2.	GENERAL NOTES AND STANDARDS
3.-8.	SUMMARY OF QUANTITIES
9.-10.	TYPICAL SECTIONS
11.-12.	SCHEDULE OF QUANTITIES
13.	ALIGNMENT TIES AND BENCHMARKS
14.-15.	PLAN & PROFILE
16.	STAGE I CONSTRUCTION
17.	STAGE II CONSTRUCTION
18.	GUARDRAIL LAYOUT
19.	EROSION CONTROL PLAN
20.	PAVEMENT MARKING PLAN
21.	PAVED SHOULDER LAYOUT
22.	WIDE LOAD DETOUR
23.-24.	DISTRICT DETAILS
25.-37.	STRUCTURE PLANS
38.-39.	SOIL BORING
40.-51.	CROSS SECTIONS

UTILITIES

FIBER OPTIC COMMUNICATION
CLEARWAVE
P.O. BOX 808
HARRISBURG, IL 62946
ATTN: AARON CARIAN

TELEPHONE
FRONTIER
208 WEST UNION
MARION, IL 62959
ATTN: RICK SHAW

WATER
CROSSVILLE WATER & GAS
P.O. BOX 309
CROSSVILLE, IL 62821
ATTN: CHUCK CONNER

ELECTRIC DISTRIBUTION
WAYNE WHITE ELECTRIC
P.O. BOX DRAWER E
FAIRFIELD, IL 62837
ATTN: ERIN HALLEY

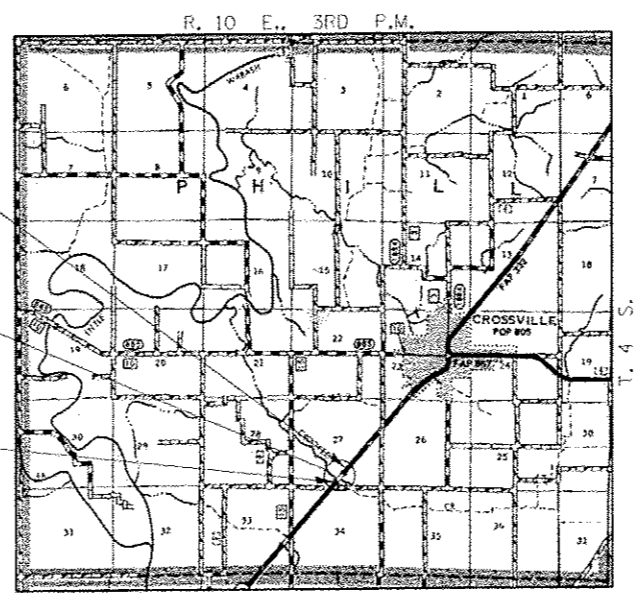
TELEPHONE
CROSSVILLE COMMUNICATION
P.O. BOX 209
CROSSVILLE, IL 62821
ATTN: STAN RAWLINSON

PIPELINE
COUNTRYMARK
1200 REFINERY ROAD
MT. VERNON, IN 47620
ATTN: MICKEY SMITH

IMPROVEMENT ENDS
STATION 338+02.88

STA. 336+25.25
3 SPAN SLAB BRIDGE
65'-6" BK TO BK ABUTMENTS
40' CLEAR WIDTH; SKEW = 0°
EXISTING STRUCTURE NO. 097-0006
PROPOSED STRUCTURE NO. 097-0079

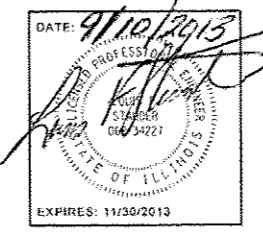
IMPROVEMENT BEGINS
STATION 334+49.13



LOCATION MAP

APPROXIMATE SCALE: 0 1 MILE

NET LENGTH OF PROJECT = 353.75 FEET = 0.067 MILES
GROSS LENGTH OF PROJECT = 353.75 FEET = 0.067 MILES
ROADWAY LENGTH = 290.25 FEET = 0.055 MILES
BRIDGE LENGTH = 63.5 FEET = 0.012 MILES



J.U.L.I.E.
JOINT UTILITY LOCATION INFORMATION FOR EXCAVATION
1-800-892-0123
OR 811

PHILLIPS TOWNSHIP

CONTRACT NO. 78266

HAMPTON, LENZINI AND RENWICK, INC.
CIVIL ENGINEERS • STRUCTURAL ENGINEERS • LAND SURVEYORS
3085 STEVENSON DRIVE, SUITE 201
SPRINGFIELD, ILLINOIS 62703
217.546.3400 www.hirengineering.com

PROJECT ENGINEER: DAVID PICHE (618) 351-5227