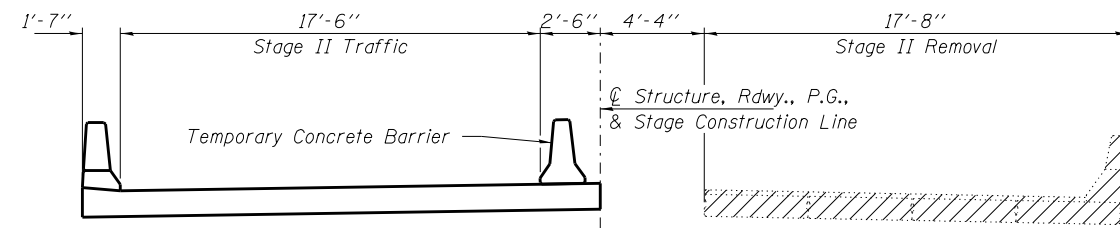
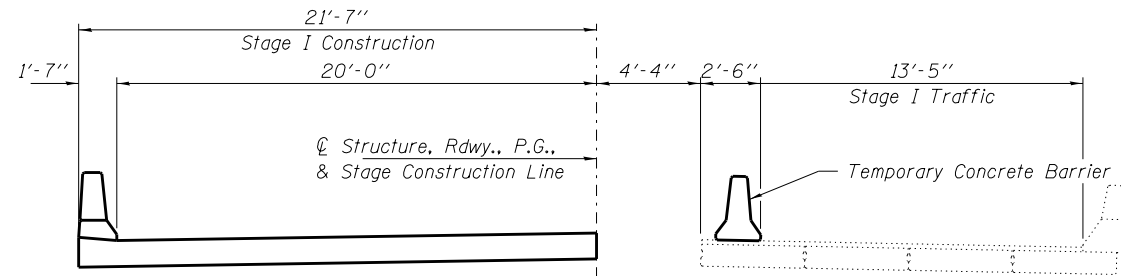


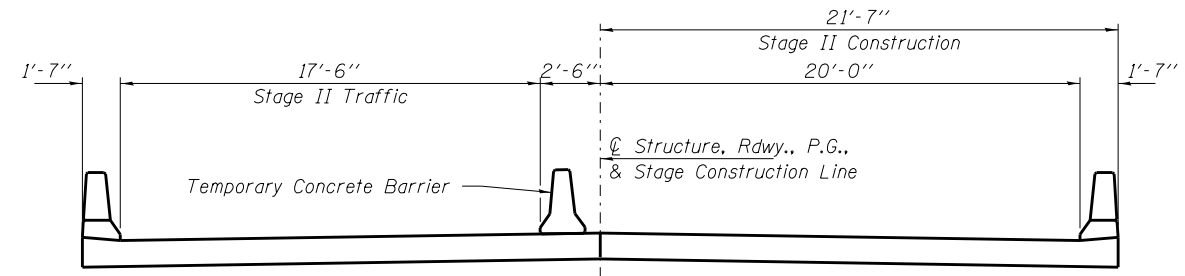
STAGE I REMOVAL



STAGE II REMOVAL

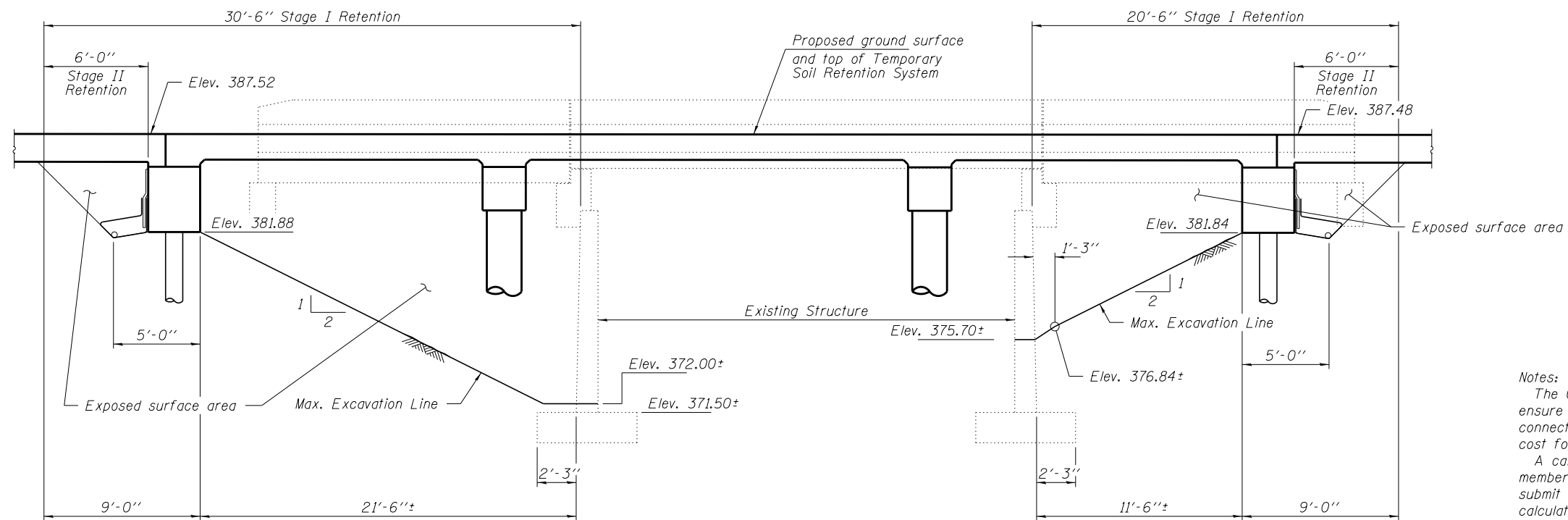


STAGE I CONSTRUCTION



STAGE II CONSTRUCTION

Notes:  
 All sections are looking East.  
 Hatched areas indicate removal.  
 For Temporary Concrete Barrier quantities  
 see Roadway Plans.



TEMPORARY SOIL RETENTION SYSTEM

Notes:  
 The Contractor shall connect the first sheet to the existing abutment wall to ensure stability of sheets driven to the top of the existing footing. This connection shall be reviewed and accepted by the Engineer and included in the cost for Temporary Soil Retention System.  
 A cantilevered sheet piling design does not appear feasible and additional members or other retention systems may be necessary. The Contractor shall submit a temporary soil retention system design including plan details and calculations for review and acceptance by the Engineer.

FILE NAME = #FILE#	USER NAME =	DESIGNED - T.J.A.	REVISED -
HAMPTON, LENZINI AND RENWICK, INC. 3035 STEVENSON DRIVE, SUITE 201 SPRINGFIELD, ILLINOIS 62703 ILLINOIS PROFESSIONAL DESIGN FIRM LS / PE / SE CORP. 184.000959		CHECKED - S.M.S.	REVISED -
	PLOT SCALE =	DRAWN - D.A.B.	REVISED -
	PLOT DATE = 9/17/2013	CHECKED - M.D.C.	REVISED -

STATE OF ILLINOIS  
 DEPARTMENT OF TRANSPORTATION

STAGE CONSTRUCTION DETAILS  
 STRUCTURE NO. 097-0079

SHEET NO. 3 OF 15 SHEETS

FAP	SECTION	COUNTY	TOTAL SHEETS	SHEET NO.
332	5B-1	WHITE	51	27
IL RTE 1/14 OVER CROOKED CR.			CONTRACT NO. 78266	
ILLINOIS FED. AID PROJECT				