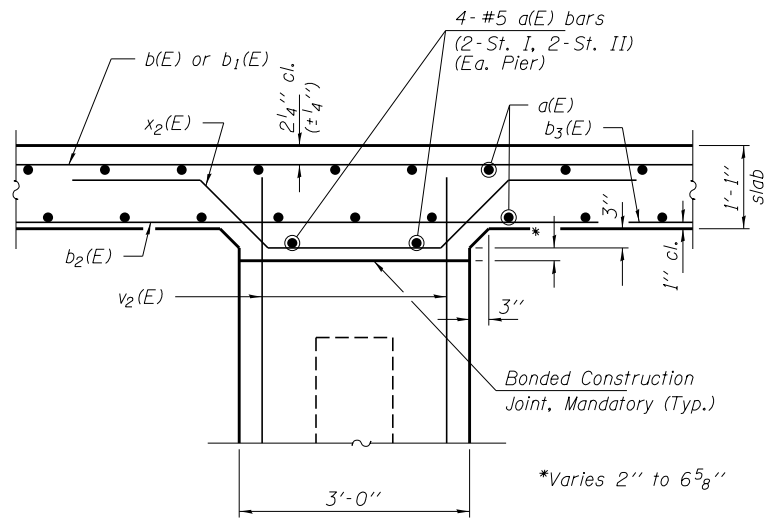
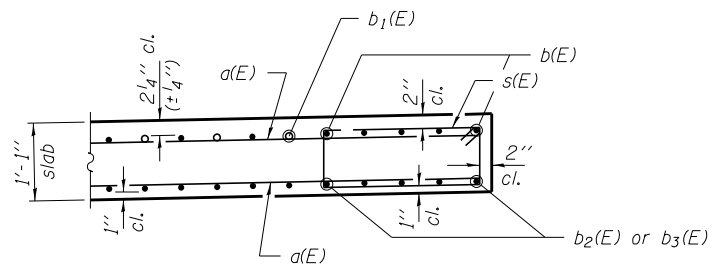


SECTION A-A



SECTION B-B



DETAIL A

**SUPERSTRUCTURE  
BILL OF MATERIAL**

Bar	No.	Size	Length	Shape
a(E)	230	#5	21'-3"	—
a <sub>1</sub> (E)	84	#6	6'-6"	—
b(E)	76	#9	34'-3"	—
b <sub>1</sub> (E)	72	#9	24'-0"	—
b <sub>2</sub> (E)	116	#9	21'-1"	C
b <sub>3</sub> (E)	58	#9	25'-6"	—
d(E)	138	#5	5'-7"	∩
d <sub>1</sub> (E)	138	#5	8'-1"	∩
e(E)	28	#4	19'-2"	—
e <sub>1</sub> (E)	28	#4	11'-11"	—
e <sub>2</sub> (E)	4	#8	34'-2"	—
e <sub>3</sub> (E)	6	#4	22'-5"	—
s(E)	43	#4	6'-9"	□
x(E)	88	#5	5'-6"	∩
x <sub>1</sub> (E)	72	#5	8'-10"	∩
x <sub>2</sub> (E)	88	#5	7'-2"	∩
Concrete Superstructure			Cu. Yd.	134.6
Bridge Deck Grooving			Sq. Yd.	268
Protective Coat			Sq. Yd.	336
Reinforcement Bars, Epoxy Coated			Pound	39,010
Bar Splicers			Each	115

FILE NAME = \$FILE\$	USER NAME =	DESIGNED - T.J.A.	REVISED -
HAMPTON, LENZINI AND RENWICK, INC. 3085 STEVENSON DRIVE, SUITE 201 SPRINGFIELD, ILLINOIS 62703 ILLINOIS PROFESSIONAL DESIGN FIRM LS / PE / SE CORP. 184.000959		CHECKED - S.M.S.	REVISED -
	PLOT SCALE =	DRAWN - D.A.B.	REVISED -
	PLOT DATE = 9/17/2013	CHECKED - M.D.C.	REVISED -

STATE OF ILLINOIS  
DEPARTMENT OF TRANSPORTATION

SUPERSTRUCTURE DETAILS  
STRUCTURE NO. 097-0079

SHEET NO. 7 OF 15 SHEETS

FAP	SECTION	COUNTY	TOTAL SHEETS	SHEET NO.
332	5B-1	WHITE	51	31
IL RTE 1/14 OVER CROOKED CR.		CONTRACT NO. 78266		
ILLINOIS FED. AID PROJECT				