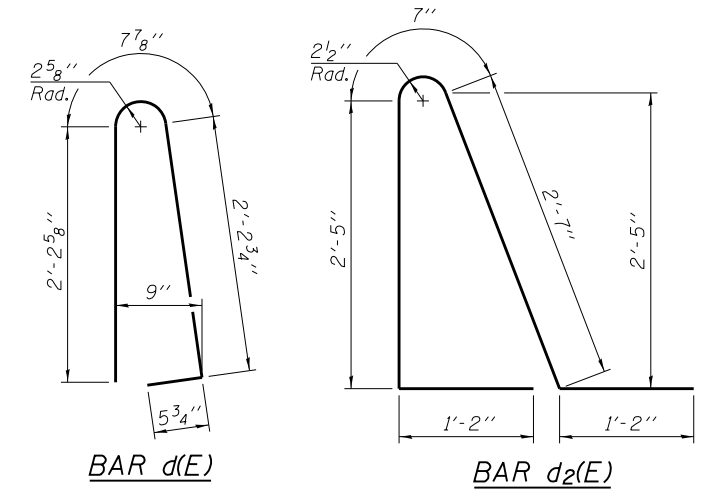
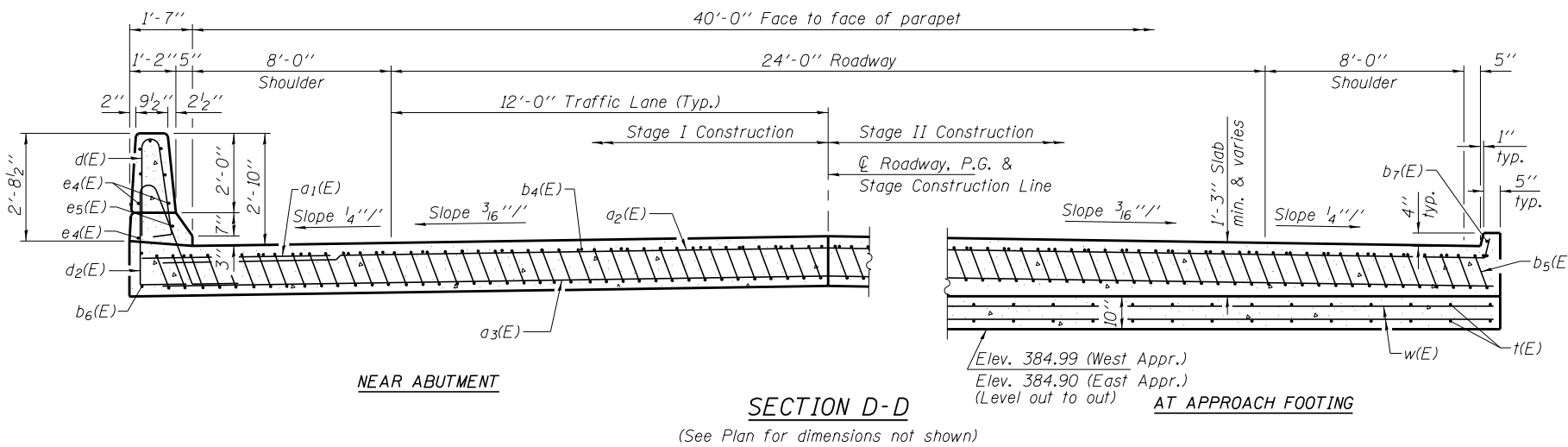
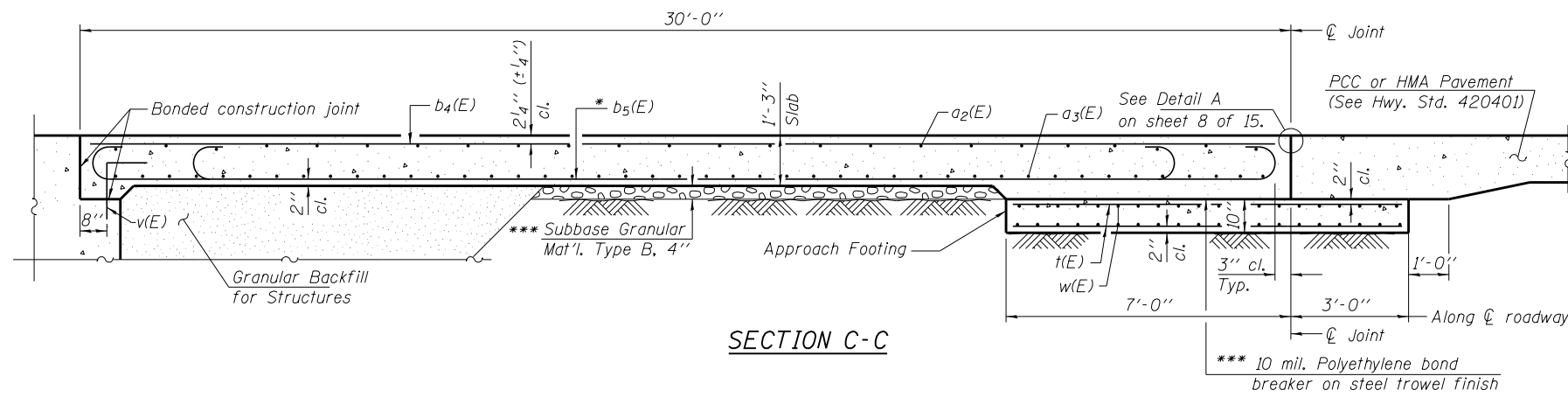
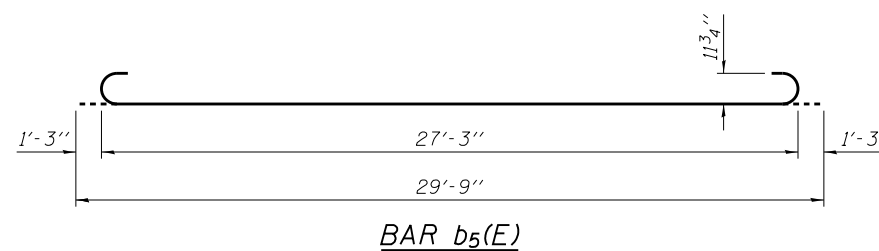
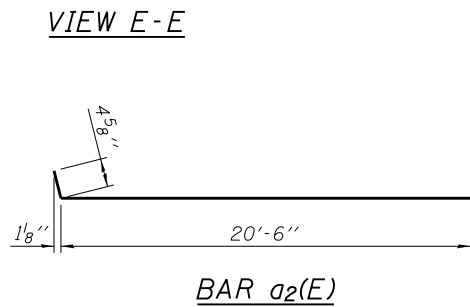
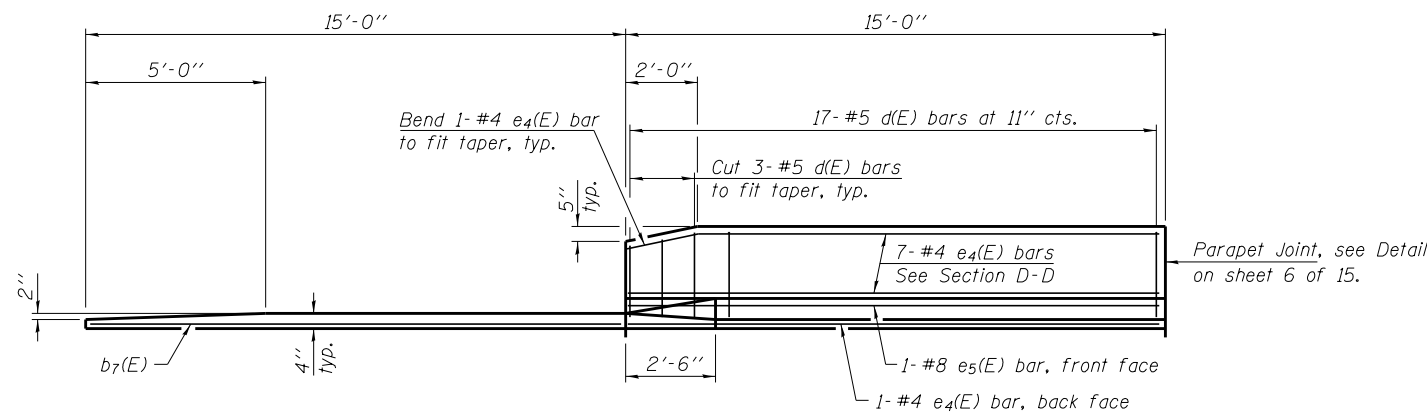


Notes:
 See sheet 8 of 15 for Detail A and View B-B.
 Approach slab and parapet concrete shall be paid for as Concrete Superstructure.
 Approach footing concrete shall be paid for as Concrete Structures.
 Reinforcement shall be paid for as Reinforcement Bars, Epoxy Coated.
 For v(E) bar details, see sheet 10 of 15.
 The approach footing maximum applied service bearing pressure (Q_{max}) = 2.0 ksf.
 Cost of excavation for approach footing included with Concrete Structures.
 For Granular Backfill for Structures and drainage treatment details, see sheet 2 of 15.
 For additional parapet details, see sheet 6 of 15.



* Tilt #9 b₅(E) bars as required to maintain clearance.
 *** Cost included with Concrete Superstructure.



**TWO APPROACHES
 BILL OF MATERIAL**

Bar	No.	Size	Length	Shape
a ₁ (E)	48	#6	6'-6"	—
a ₂ (E)	100	#4	20'-11"	—
a ₃ (E)	184	#5	20'-7"	—
b ₄ (E)	68	#4	29'-8"	—
b ₅ (E)	200	#9	29'-9"	U
b ₆ (E)	4	#4	14'-8"	—
b ₇ (E)	4	#4	14'-8"	—
d(E)	68	#5	5'-7"	U
d ₂ (E)	68	#5	7'-11"	U
e ₄ (E)	32	#4	14'-8"	—
e ₅ (E)	4	#8	14'-8"	—
t(E)	176	#4	9'-8"	—
w(E)	160	#5	20'-7"	—
Concrete Structures		Cu. Yd.	25.8	
Concrete Superstructure		Cu. Yd.	133.1	
Reinforcement Bars, Epoxy Coated		Pound	33,470	
Bar Splicers		Each	222	

BA-0 12-12-12

FILE NAME = \$FILE\$	USER NAME =	DESIGNED - T.J.A.	REVISED -
HAMPTON, LENZINI AND RENWICK, INC.		CHECKED - S.M.S.	REVISED -
3035 STEVENSON DRIVE, SUITE 201 SPRINGFIELD, ILLINOIS 62703	PLOT SCALE =	DRAWN - D.A.B.	REVISED -
ILLINOIS PROFESSIONAL DESIGN FIRM LS / PE / SE CORP. 184.000959	PLOT DATE = 9/17/2013	CHECKED - M.D.C.	REVISED -

STATE OF ILLINOIS
 DEPARTMENT OF TRANSPORTATION

BRIDGE APPROACH SLAB DETAILS
 STRUCTURE NO. 097-0079

SHEET NO. 9 OF 15 SHEETS

FAP	SECTION	COUNTY	TOTAL SHEETS	SHEET NO.
332	5B-1	WHITE	51	33
IL RTE 1/14 OVER CROOKED CR.			CONTRACT NO. 78266	
ILLINOIS FED. AID PROJECT				

(Sheet 2 of 2)