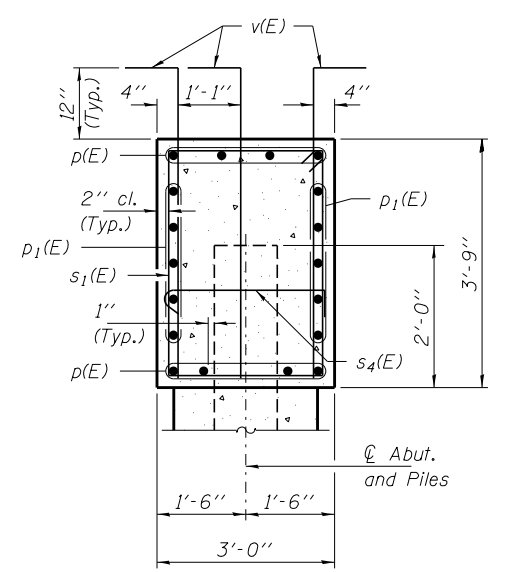
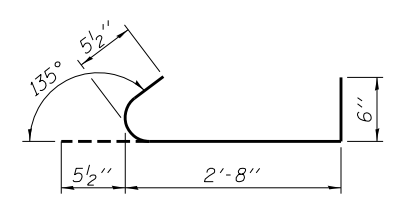


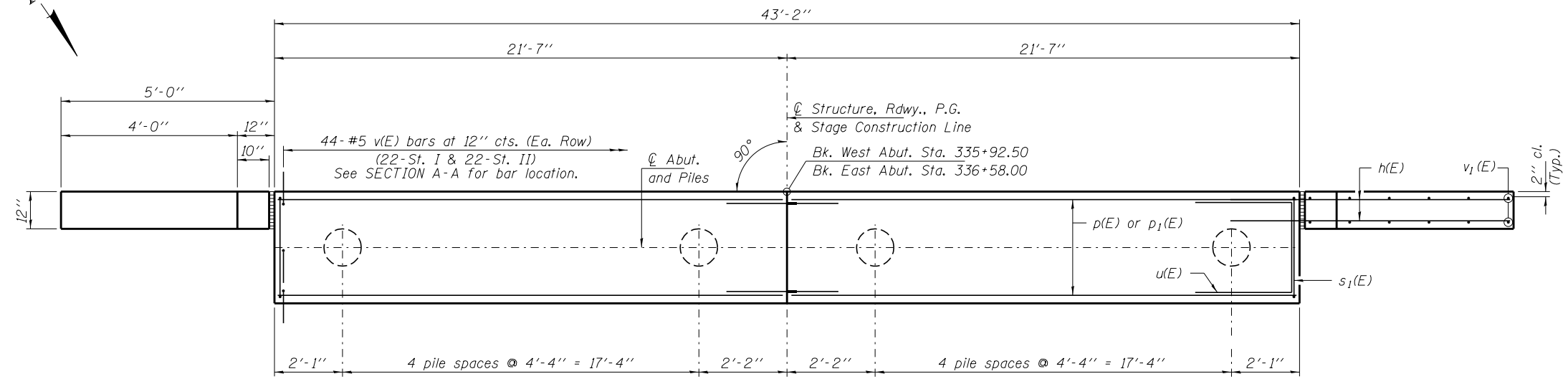
ELEVATION
(West Abut. shown, looking West)



SECTION A-A



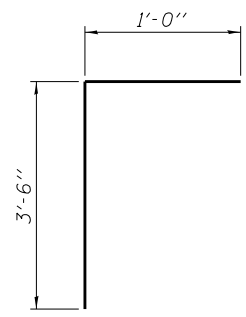
BAR s4(E)



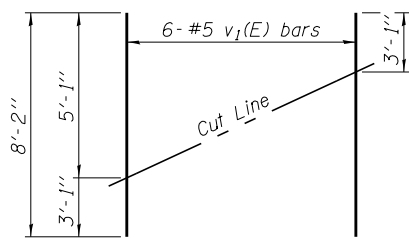
PLAN
(West Abut. shown)

PILE DATA

Type: Metal Shell Piles 14" x 0.312"
 Nominal Required Bearing: 212 Kips/pile
 Factored Resistance Available: 116 Kips/pile
 Est. Length: 51' (W. Abut.)
 41' (E. Abut.)
 No. Production Piles: 19
 No. Test Piles: 1 (E. Abut.)

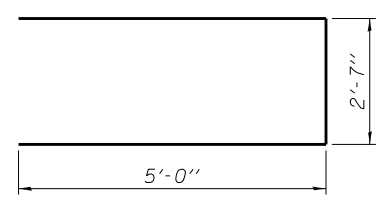


BAR v(E)

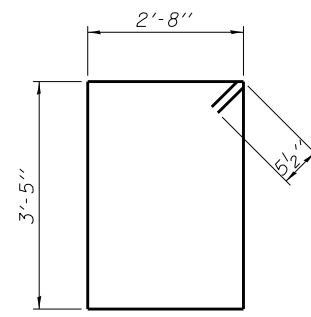


FIELD CUTTING DIAGRAM

Order v1(E) full length. Cut as shown and use remainder of bars in opposite face.



BAR u(E)



BAR s1(E)

**TWO ABUTMENTS
BILL OF MATERIAL**

Bar	No.	Size	Length	Shape
h(E)	56	#5	7'-8"	—
p(E)	32	#7	21'-3"	—
p1(E)	40	#4	21'-3"	—
s1(E)	48	#5	13'-1"	⊞
s4(E)	40	#5	3'-8"	⊞
u(E)	16	#6	12'-7"	⊞
v(E)	264	#5	4'-6"	⌈
v1(E)	24	#5	8'-2"	—
Concrete Structures		Cu. Yd.	37.8	
Reinforcement Bars, Epoxy Coated		Pound	4,960	
Bar Splicers		Each	36	
Furnishing Metal Shell Piles 14" x 0.312"		Foot	879	
Driving Piles		Foot	879	
Test Pile Metal Shells		Each	1	

Notes:
 For details of Bar Splicers, see sheet 12 of 15.
 For details of piles, see sheet 13 of 15.