
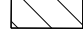
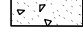
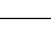


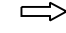
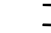

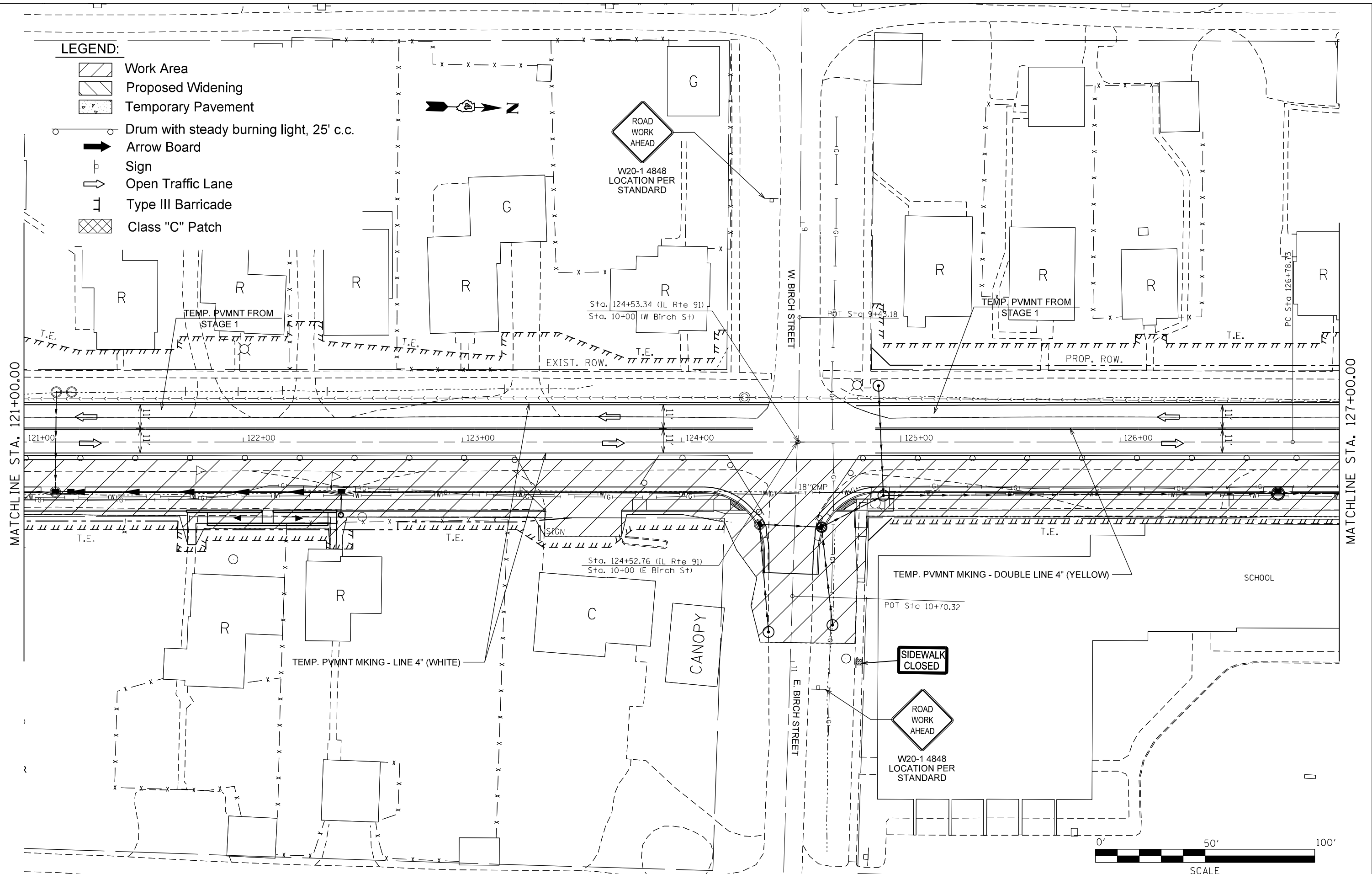


LEGEND:

-  Work Area
-  Proposed Widening
-  Temporary Pavement
-  Drum with steady burning light, 25' c.c.
-  Arrow Board
-  Sign
-  Open Traffic Lane
-  Type III Barricade
-  Class "C" Patch



MATCHLINE STA. 121+00.00

MATCHLINE STA. 127+00.00



FILE NAME =	USER NAME = crespole	DESIGNED -	REVISED -
et:\pw\work\p\dot\crespole\d0348685\d48792-SHT-STAGE2.DGN		DRAWN -	REVISED -
Default	PLOT SCALE = 40.0000' / in.	CHECKED -	REVISED -
	PLOT DATE = 8/15/2013	DATE -	REVISED -

**STATE OF ILLINOIS
DEPARTMENT OF TRANSPORTATION**

**TRAFFIC CONTROL PLANS
STAGE 2**

F.A.S. RTE.	SECTION	COUNTY	TOTAL SHEETS	SHEET NO.
1380	7W-1,RS-3	Peoria	617	150
CONTRACT NO. 88792				
ILLINOIS FED. AID PROJECT				

SCALE: SHEET OF SHEETS STA. TO STA.