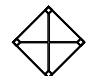
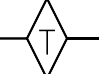
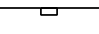

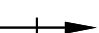
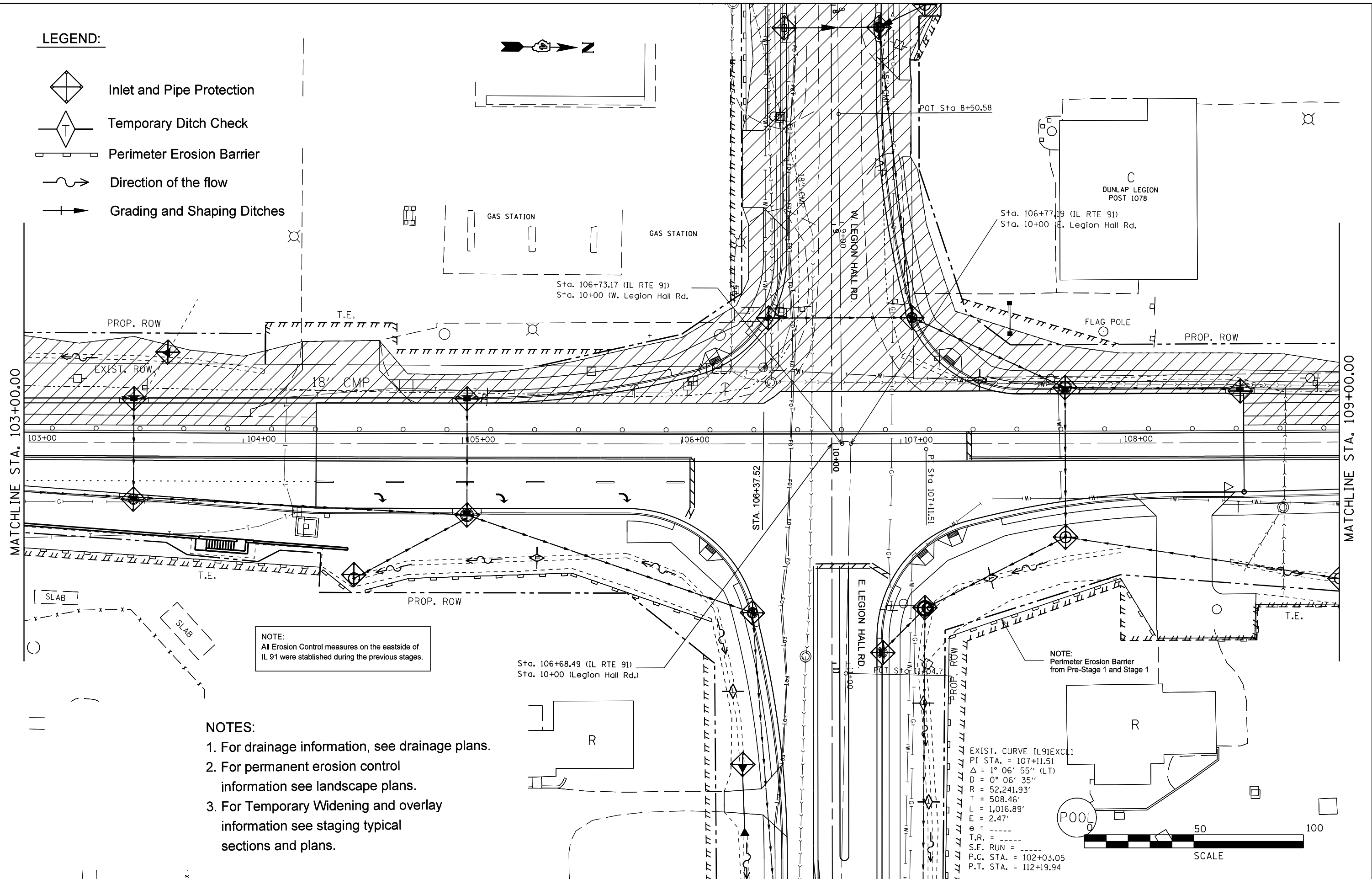


LEGEND:

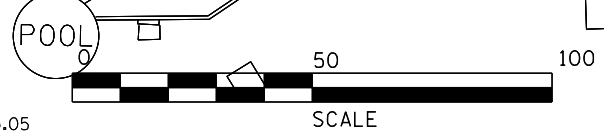
-  Inlet and Pipe Protection
-  Temporary Ditch Check
-  Perimeter Erosion Barrier
-  Direction of the flow
-  Grading and Shaping Ditches



NOTE:
All Erosion Control measures on the eastside of IL 91 were established during the previous stages.

- NOTES:**
1. For drainage information, see drainage plans.
 2. For permanent erosion control information see landscape plans.
 3. For Temporary Widening and overlay information see staging typical sections and plans.

EXIST. CURVE IL91EXCL1
 PI STA. = 107+11.51
 $\Delta = 1^\circ 06' 55''$ (LT)
 $D = 0^\circ 06' 35''$
 $R = 52,241.93'$
 $T = 508.46'$
 $L = 1,016.89'$
 $E = 2.47'$
 $\theta = \dots$
 $T.R. = \dots$
 $S.E. RUN = \dots$
 $P.C. STA. = 102+03.05$
 $P.T. STA. = 112+19.94$



FILE NAME =	USER NAME = crespole	DESIGNED -	REVISED -
Default	Default	DRAWN -	REVISED -
		CHECKED -	REVISED -
		DATE -	REVISED -

**STATE OF ILLINOIS
DEPARTMENT OF TRANSPORTATION**

**EROSION CONTROL PLANS
STAGE 3**

F.A.S. RTE.	SECTION	COUNTY	TOTAL SHEETS	SHEET NO.
1380	7W-1,RS-3	Peoria	617	211
CONTRACT NO. 88792				
ILLINOIS FED. AID PROJECT				