
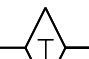
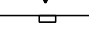

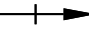
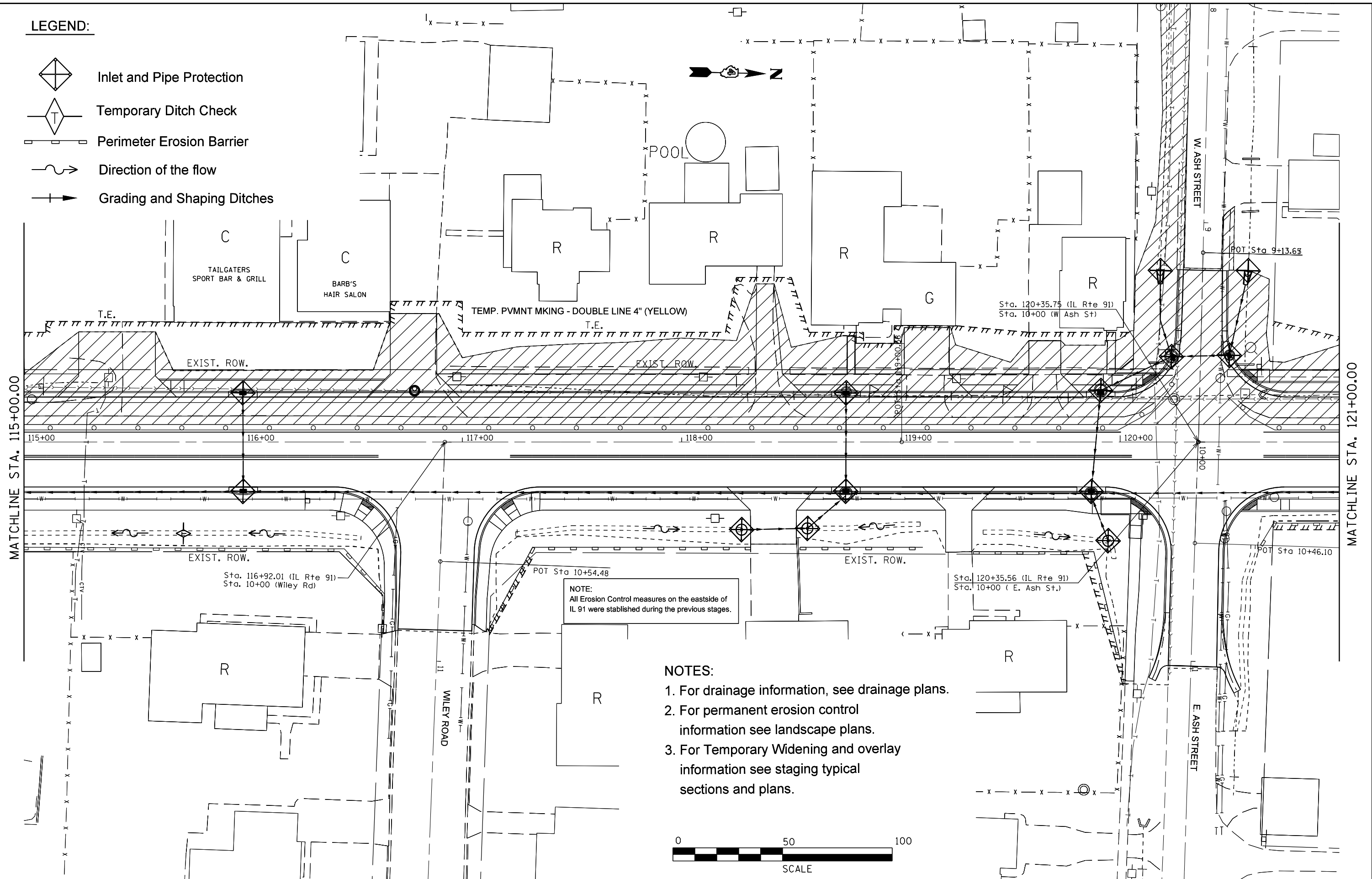


LEGEND:

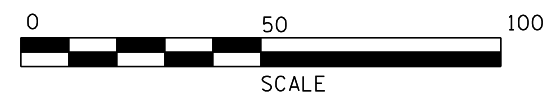
-  Inlet and Pipe Protection
-  Temporary Ditch Check
-  Perimeter Erosion Barrier
-  Direction of the flow
-  Grading and Shaping Ditches



NOTE:
All Erosion Control measures on the eastside of IL 91 were established during the previous stages.

NOTES:

1. For drainage information, see drainage plans.
2. For permanent erosion control information see landscape plans.
3. For Temporary Widening and overlay information see staging typical sections and plans.



FILE NAME = e:\pwork\pwork\respole\0349547\EC	USER NAME = crespole	DESIGNED - DRAWN -	REVISED - REVISED -	STATE OF ILLINOIS DEPARTMENT OF TRANSPORTATION	EROSION CONTROL PLANS STAGE 3				F.A.S. RTE. 1380	SECTION 7W-1,RS-3	COUNTY Peoria	TOTAL SHEETS 617	SHEET NO. 213
Default	Sheets for the entire project for all stages.	CHECKED - DATE -	REVISED - REVISED -		SCALE:	SHEET	OF	SHEETS	STA.	TO STA.	CONTRACT NO. 88792		
	PLOT SCALE = 40.0000' / in.				ILLINOIS FED. AID PROJECT								