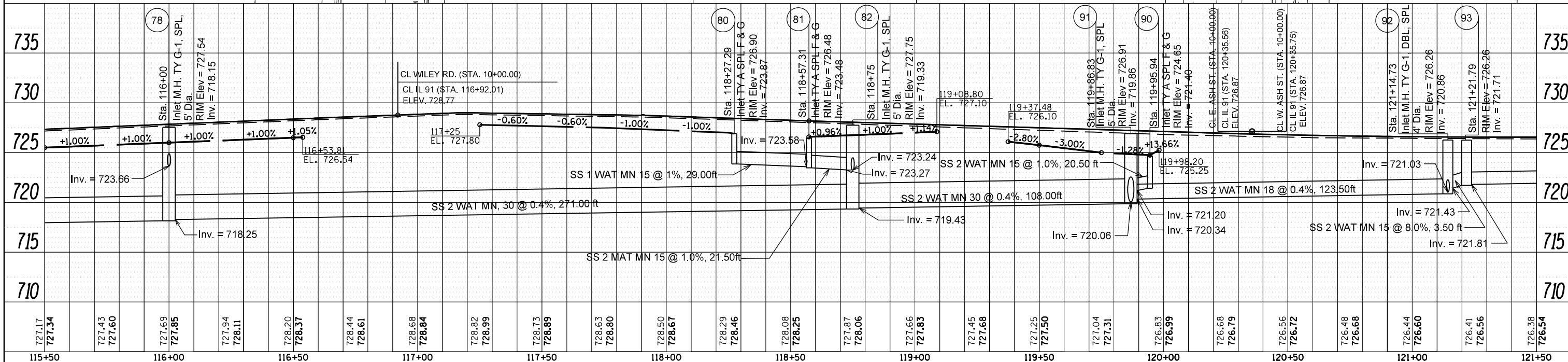
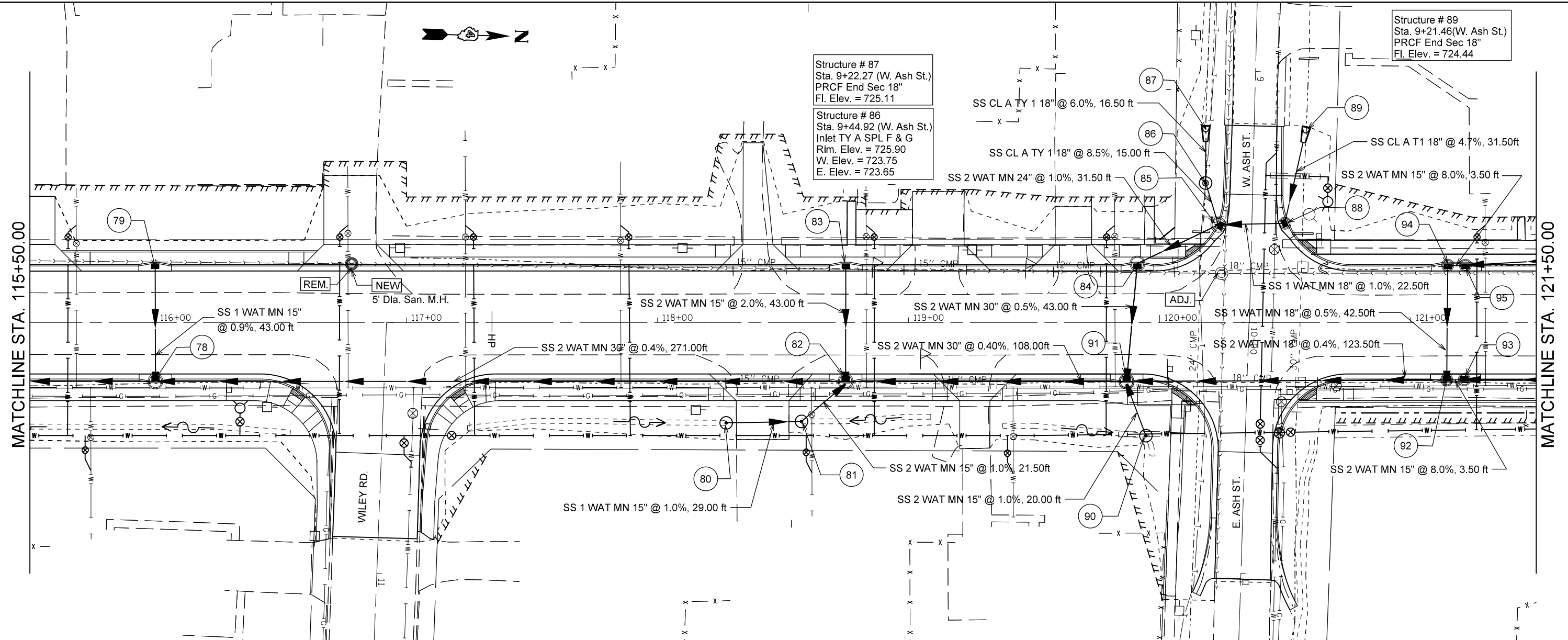


PLAN	SURVEYED	DATE
	PLOTTED	
	ALIGNED	
	CHECKED	
	DESIGNED	
	NO. /	
	FILE NAME	

PROFILE	SURVEYED	DATE
	PLOTTED	
	GRADES CHECKED	
	STRUCTURE NOTATIONS CHECKED	
	NO. /	
	FILE NAME	



FILE NAME =	USER NAME = crespole	DESIGNED -	REVISED -	STATE OF ILLINOIS DEPARTMENT OF TRANSPORTATION	ILLINOIS ROUTE 91 DRAINAGE PLANS RT SIDE		F.A.S. RT. = 1380	SECTION = 7W-1,RS-3	COUNTY = Peoria	TOTAL SHEETS = 617	SHEET NO. = 239	
c:\pwork\pwork\crespole\0330150\04.88	92-SHT-DRAIN-RT-Rev1.dgn	DRAWN -	REVISED -		SCALE:	SHEET	OF	SHEETS	STA.	TO	STA.	ILLINOIS FED. AID PROJECT
	PLOT SCALE = 48.0000' / in.	CHECKED -	REVISED -									CONTRACT NO. 88792
Default	PLOT DATE = 8/16/2013	DATE -	REVISED -									