

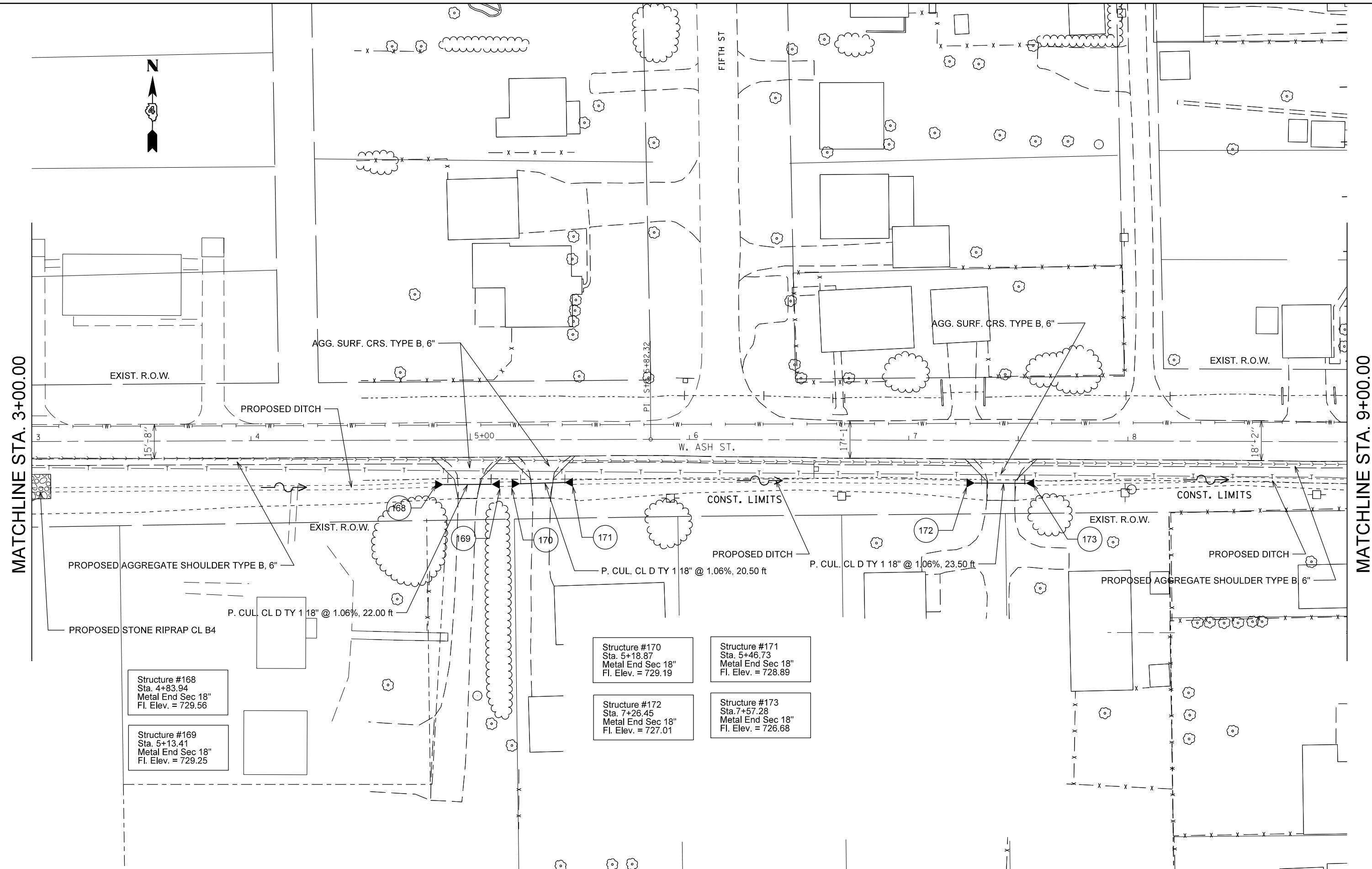


MATCHLINE STA. 3+00.00

MATCHLINE STA. 9+00.00

FIFTH ST

W. ASH ST.



Structure #168
Sta. 4+83.94
Metal End Sec 18"
Fl. Elev. = 729.56

Structure #169
Sta. 5+13.41
Metal End Sec 18"
Fl. Elev. = 729.25

Structure #170
Sta. 5+18.87
Metal End Sec 18"
Fl. Elev. = 729.19

Structure #171
Sta. 5+46.73
Metal End Sec 18"
Fl. Elev. = 728.89

Structure #172
Sta. 7+26.45
Metal End Sec 18"
Fl. Elev. = 727.01

Structure #173
Sta. 7+57.28
Metal End Sec 18"
Fl. Elev. = 726.68

FILE NAME =	USER NAME = crespole	DESIGNED -	REVISED -
et:\pw\work\p\pidot\crespole\d0330150\0489792-SHT-WASHT1.DGN		DRAWN -	REVISED -
Default	PLOT SCALE = 40.0000' / in.	CHECKED -	REVISED -
	PLOT DATE = 8/15/2013	DATE -	REVISED -

**STATE OF ILLINOIS
DEPARTMENT OF TRANSPORTATION**

**WEST ASH STREET DRAINAGE PLANS
DETENTION POND**

SCALE: SHEET OF SHEETS STA. TO STA.

F.A.S. RTE.	SECTION	COUNTY	TOTAL SHEETS	SHEET NO.
1380	7W-1,RS-3	Peoria	617	254
CONTRACT NO. 88792				

ILLINOIS FED. AID PROJECT