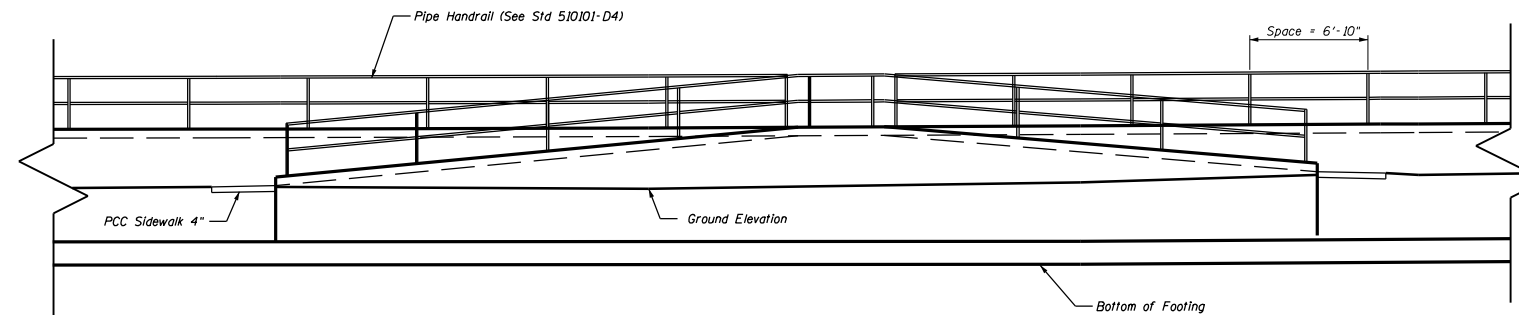
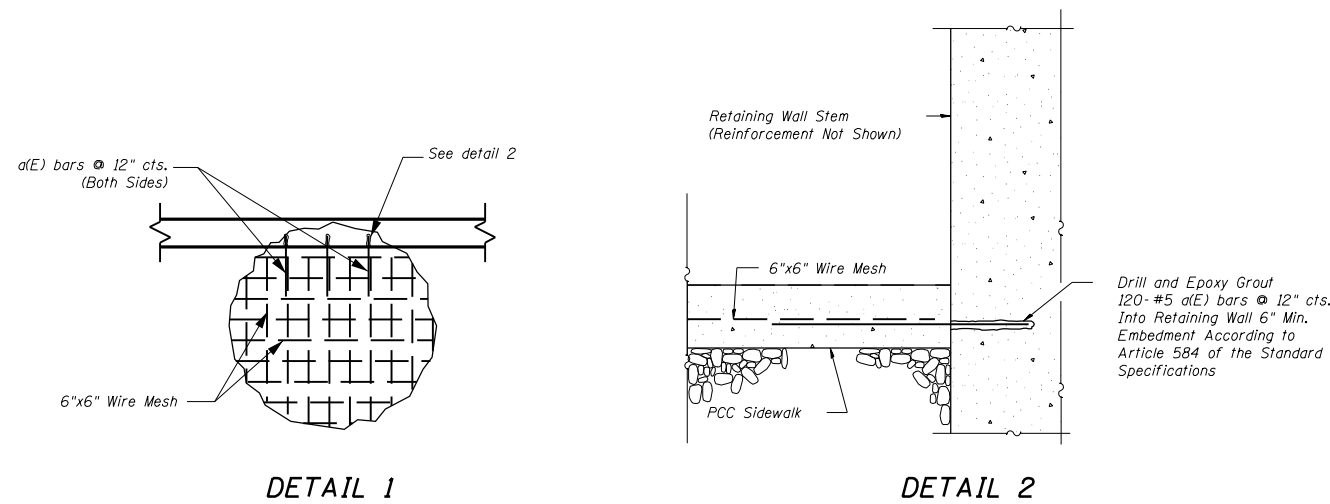


A.D.A RAMP - ISOMETRIC
Not to scale



ELEVATION - A.D.A. RAMP

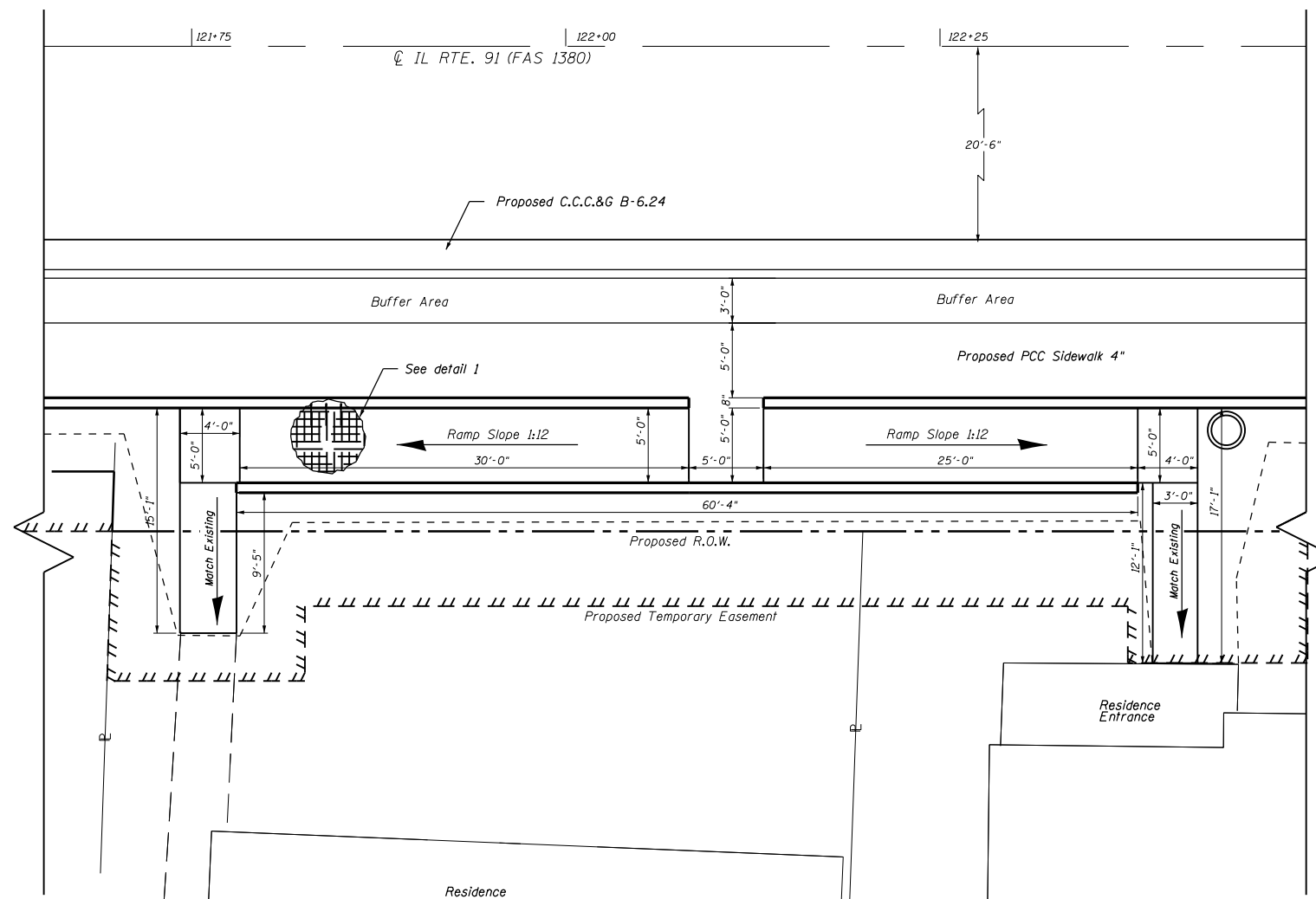


DETAIL 1

DETAIL 2

BILL OF MATERIALS

Bar	No.	Size	Length (ft)	Shape
a(E)	120	#5	2'-8"	—
Reinforcement Bars, Epoxy Coated			Lbs.	334
Pipe Handrail			foot	291.0



PLAN - A.D.A. RAMP

FILE NAME =	USER NAME = crespole	DESIGNED -	REVISED -
c:\pwork\pwork\crespole\d0330150\048792-sht-details.dgn		DRAWN -	REVISED -
Default	PLOT SCALE = 40.0000' / in.	CHECKED -	REVISED -
	PLOT DATE = 8/15/2013	DATE -	REVISED -

STATE OF ILLINOIS
DEPARTMENT OF TRANSPORTATION

HANDRAIL DETAILS			
RT. STA. 121 + 78.66- 122 + 38.66			
SCALE:	SHEET 9	OF 9 SHEETS	STA. TO STA.

F.A.S. RTE.	SECTION	COUNTY	TOTAL SHEETS	SHEET NO.
1380	7W-1,RS-3	Peoria	617	320
CONTRACT NO. 88792			ILLINOIS FED. AID PROJECT	