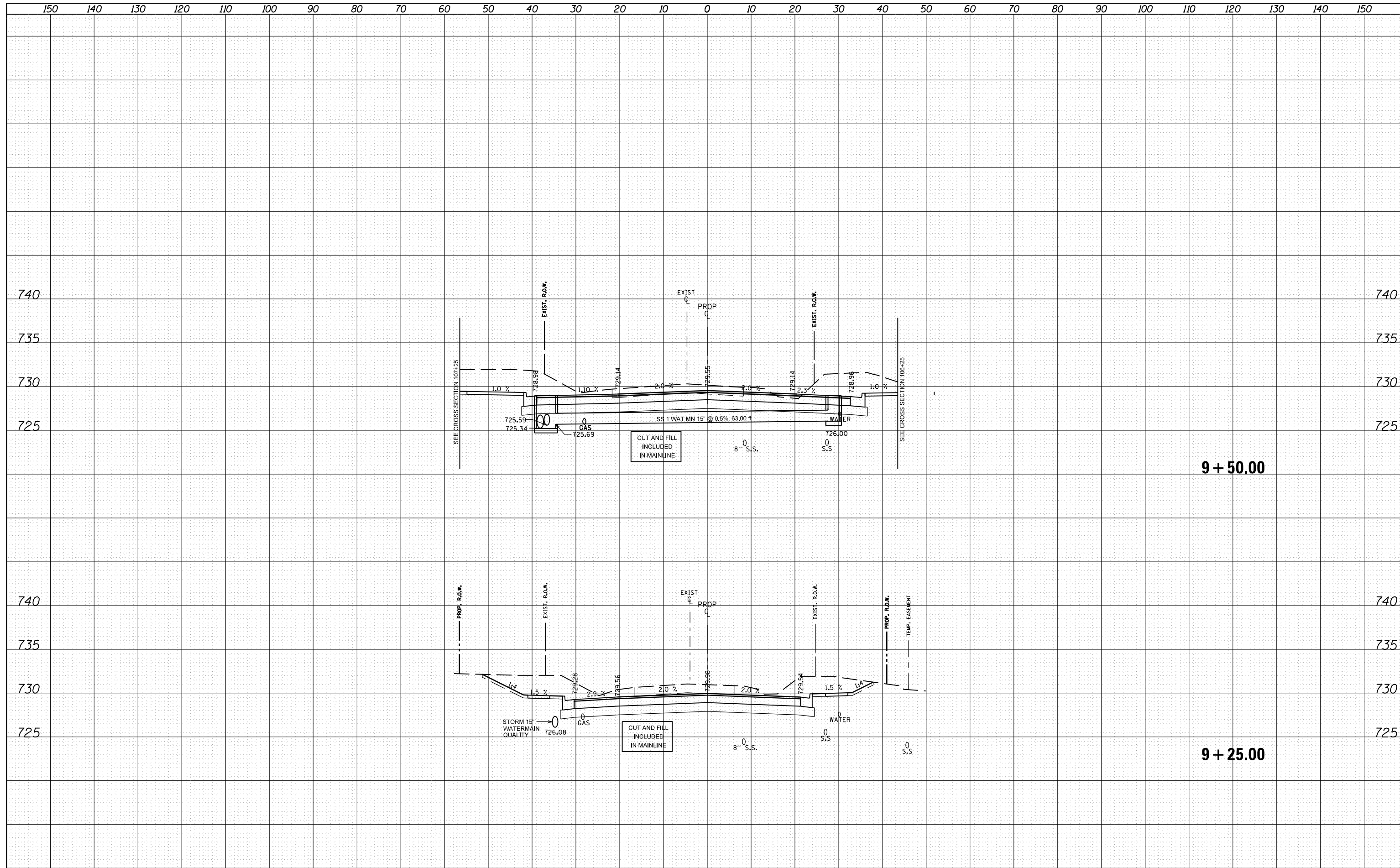


DATE	
BY	
SURVEYED	
PLOTTED	
TEMPLATE	
NOTE BOOK	
AREAS CHECKED	
NO.	

DATE	
BY	
SURVEYED	
PLOTTED	
TEMPLATE	
NOTE BOOK	
AREAS CHECKED	
NO.	



FILE NAME =	USER NAME = crespole	DESIGNED -	REVISED -	STATE OF ILLINOIS DEPARTMENT OF TRANSPORTATION	LEGION HALL ROAD CROSS SECTION	F.A.S. RTE.	SECTION	COUNTY	TOTAL SHEETS	SHEET NO.
c:\pw\work\pwidot\crespole\10330150\10488792-sh	LHR-XS.dgn	DRAWN -	REVISED -			1380	7W-1,RS-3	Peoria	617	524
Default	PLOT SCALE = 20.0000' / in.	CHECKED -	REVISED -			CONTRACT NO. 88792		ILLINOIS FED. AID PROJECT		
	PLOT DATE = 8/15/2013	DATE -	REVISED -			SCALE:	SHEET OF SHEETS	STA. 9+25.00	TO STA. 9+50.00	