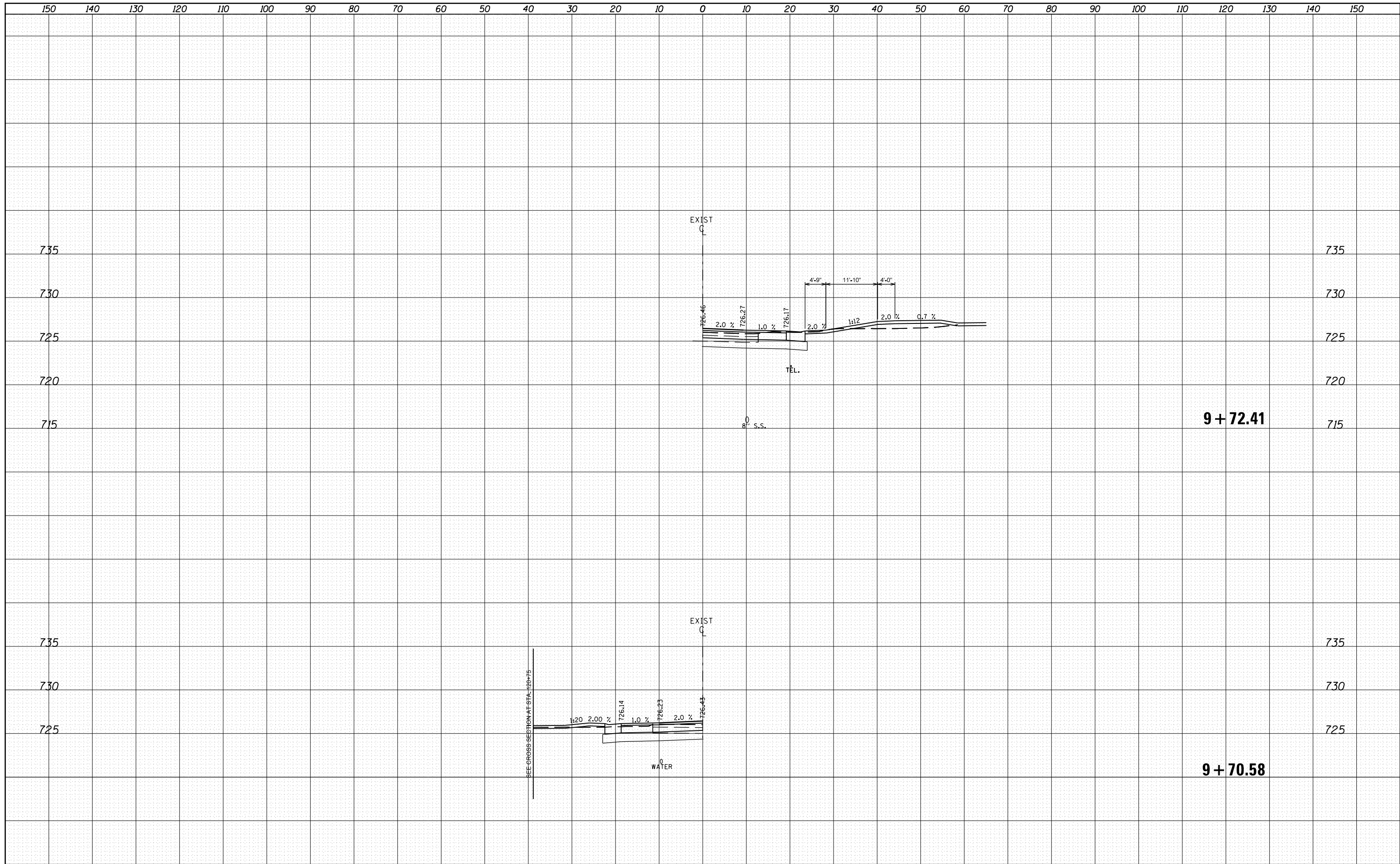


DATE	
BY	
SURVEYED	
PLOTTED	
TEMPLATE	
NOTE BOOK	
AREAS CHECKED	
NO.	

DATE	
BY	
SURVEYED	
PLOTTED	
TEMPLATE	
NOTE BOOK	
AREAS CHECKED	
NO.	



9 + 72.41

9 + 70.58

FILE NAME =	USER NAME = crespole	DESIGNED -	REVISED -
c:\pw_work\pwidth\crespole\d0330150\488792-sh-xssideroad.dgn		DRAWN -	REVISED -
Default		CHECKED -	REVISED -
	PLOT DATE = 8/16/2013	DATE -	REVISED -

STATE OF ILLINOIS
DEPARTMENT OF TRANSPORTATION

SCALE:		SHEET OF SHEETS		STA. 9+70.58 TO STA. 9+72.41	
--------	--	-----------------	--	------------------------------	--

F.A.S. RTE. 1380	SECTION 7W-1,RS-3	COUNTY Peoria	TOTAL SHEETS 617	SHEET NO. 583
CONTRACT NO. 88792				
ILLINOIS FED. AID PROJECT				