

80% FED
20% STATE

80% FED
20% STATE

SUMMARY OF QUANTITIES			TOTAL QUANTITIES	CONSTRUCTION TYPE CODE		
CODE NO	ITEM	UNIT		0005 MOULTRIE	0005 COLES	
40200800	AGGREGATE SURFACE COURSE, TYPE B	TON	78	68	10	
40600290	BITUMINOUS MATERIALS (TACK COAT)	POUND	168570	127834	40736	
40600990	TEMPORARY RAMP	SQ YD	219	199	20	
40602975	HOT-MIX ASPHALT BINDER COURSE, IL-9.5FG, N90	TON	15394	11232	4162	
40603345	HOT-MIX ASPHALT SURFACE COURSE, MIX "D", N90	TON	17273	12816	4457	
40800050	INCIDENTAL HOT-MIX ASPHALT SURFACING	TON	158	133	25	
44000155	HOT-MIX ASPHALT SURFACE REMOVAL, 1 1/2"	SQ YD	233221	180278	52943	*
44201785	CLASS D PATCHES, TYPE I, 12 INCH	SQ YD	4	4		
44201789	CLASS D PATCHES, TYPE II, 12 INCH	SQ YD	454	454		
44201794	CLASS D PATCHES, TYPE III, 12 INCH	SQ YD	300	300		
44201796	CLASS D PATCHES, TYPE IV, 12 INCH	SQ YD	440	440		*
44201798	CLASS D PATCHES, TYPE I, 13 INCH	SQ YD	4	4		
44201803	CLASS D PATCHES, TYPE II, 13 INCH	SQ YD	175	175		
44201807	CLASS D PATCHES, TYPE III, 13 INCH	SQ YD	63	63		

SUMMARY OF QUANTITIES			TOTAL QUANTITIES	CONSTRUCTION TYPE CODE		
CODE NO	ITEM	UNIT		0005 MOULTRIE	0005 COLES	
44201809	CLASS D PATCHES, TYPE IV, 13 INCH	SQ YD	94	94		
44201811	CLASS D PATCHES, TYPE I, 14 INCH	SQ YD	34	15	19	
44201815	CLASS D PATCHES, TYPE II, 14 INCH	SQ YD	1459	879	580	
44201819	CLASS D PATCHES, TYPE III, 14 INCH	SQ YD	491	265	226	
44201821	CLASS D PATCHES, TYPE IV, 14 INCH	SQ YD	1976	1096	880	
48102100	AGGREGATE WEDGE SHOULDER, TYPE B	TON	6231	4436	1795	
63000001	STEEL PLATE BEAM GUARDRAIL, TYPE A, 6 FOOT POSTS	FOOT	5925	4925	1000	
63000030	STRONG POST GUARDRAIL ATTACHED TO CULVERT	FOOT	87.5	87.5		
63000350	LONG-SPAN GUARDRAIL OVER CULVERT, 12 FT 6 IN SPAN	FOOT	75		75	
63000360	LONG-SPAN GUARDRAIL OVER CULVERT, 18 FT 9 IN SPAN	FOOT	87.5	87.5		
63000370	LONG-SPAN GUARDRAIL OVER CULVERT, 25 FT SPAN	FOOT	100	100		
63100045	TRAFFIC BARRIER TERMINAL, TYPE 2	EACH	4	2	2	

* SPECIALTY ITEM

REV. 1-7-2020

* MOULTRIE AND COLES

MODEL: Defaul
FILE NAME: \\p:\planroom\dot\illinois\gov\PHUDOT\Documents\DOT_Offices\District_7\Project\174260\CAD\Drawings\174260-Sht-004.dgn

USER NAME = steffennk	DESIGNED -	REVISED -
PLOT SCALE = 100.0000' / in.	DRAWN -	REVISED -
PLOT DATE = 10/16/2019	CHECKED -	REVISED -
	DATE -	REVISED -

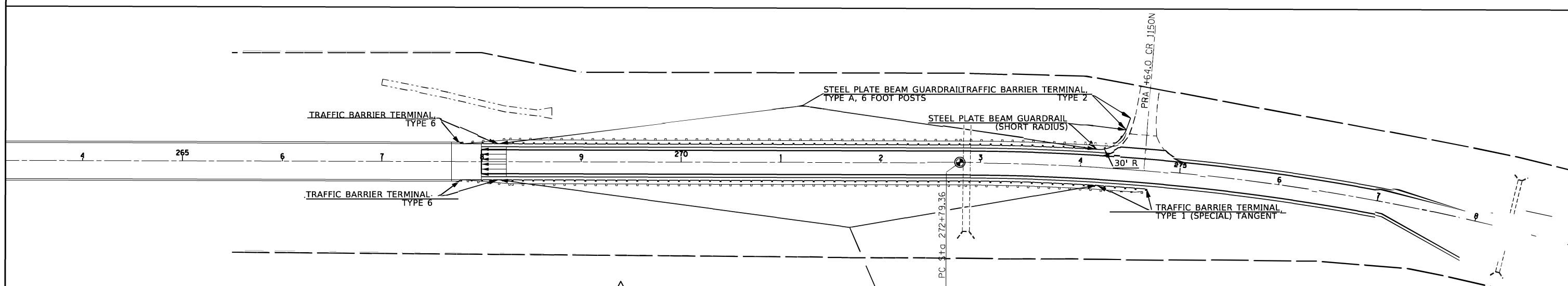
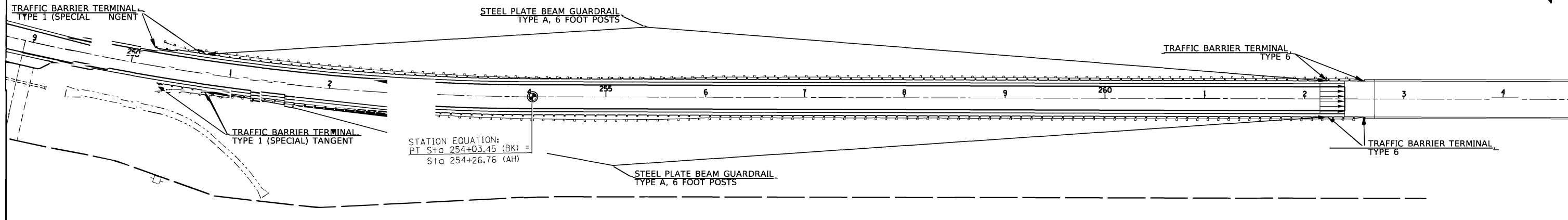
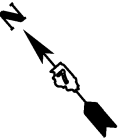
STATE OF ILLINOIS
DEPARTMENT OF TRANSPORTATION

SUMMARY OF QUANTITIES

SCALE: SHEET 1 OF 4 SHEETS STA. TO STA.

F.A.P. RTE. 320	SECTION (104.105)RS-4	COUNTY *	TOTAL SHEETS 78	SHEET NO. 3
			CONTRACT NO. 74260	
ILLINOIS FED. AID PROJECT				

GUARDRAIL DETAILS - LOCATION 3



STATION	OFFSET	TO	STATION	OFFSET	STEEL PLATE BEAM GUARDRAIL TYPE A, 6 FOOT POSTS 63000001 (FOOT)	STRONG POST GUARDRAIL ATTACHED TO CULVERT 63000030 (FOOT)	TRAFFIC BARRIER TERMINAL, TYPE 2 63100045 (EACH)	TRAFFIC BARRIER TERMINAL, TYPE 6 63100085 (EACH)	TRAFFIC BARRIER TERMINAL, TYPE 1 (SPECIAL) TANGENT 63100167 (EACH)	GUARDRAIL REMOVAL 63200310 (FOOT)	TERMINAL MARKER - DIRECT APPLIED 72501000 (EACH)	TERMINAL MARKER - POST MOUNTED 72501100 (EACH)	GUARDRAIL REFLECTORS, TYPE A 78200005 (EACH)	STEEL PLATE BEAM GUARDRAIL (SHORT RADIUS) X6330725 (FOOT)
MOUTRIE COUNTY														
250+27.54	18.0' RT.		250+77.15	18.0' RT.					1.0		1.0			
250+77.15	18.0' RT.		262+22.90	18.0' RT.	1,125.0					1,213.0			16.0	
262+22.90	18.0' RT.		262+60.38	18.0' RT.				1.0						
267+79.01	18.0' RT.		268+16.49	18.0' RT.				1.0						
268+16.49	18.0' RT.		274+17.58	18.0' RT.	600.0	600.0				684.0			9.0	
274+17.58	18.0' RT.		274+67.97	18.0' RT.					1.0		1.0			
TOTAL SB IL-121:					1,725.0	600.0	0.0	2.0	2.0	1,897.0	2.0	0.0	25.0	0.0
250+21.59	18.0' LT.		250+71.99	18.0' LT.					1.0					
250+71.99	18.0' LT.		262+22.90	18.0' LT.	1,125.0					1,205.0			16.0	
262+22.90	18.0' LT.		262+60.38	18.0' LT.				1.0						
267+79.01	18.0' LT.		268+16.49	18.0' LT.				1.0						
268+16.49	18.0' LT.		274+15.42	18.0' LT.	600.0					673.0			9.0	
274+15.42	18.0' LT.		274+43.53	38.6' LT.										37.5
274+43.53	38.6' LT.		274+43.53	50.6' LT.			1.0					1.0		
TOTAL NB IL-121:					1,725.0	0.0	1.0	2.0	1.0	1,878.0	1.0	1.0	25.0	37.5
GRAND TOTAL					3,450.0	600.0	1.0	4.0	3.0	3,775.0	3.0	1.0	50.0	37.5

REV. 1-7-2020

MODEL: Default
FILE NAME: dw:\planroom\dot\illinois.gov\PWIDOT\Documents\DOT_Offices\District_7\Projects\74260\CAD\Drawn\CADsheets\74260-sht-details.dgn

USER NAME = steffemk	DESIGNED -	REVISD -
PLOT SCALE = 100.0000' / in.	DRAWN -	REVISD -
PLOT DATE = 10/16/2019	CHECKED -	REVISD -
	DATE -	REVISD -

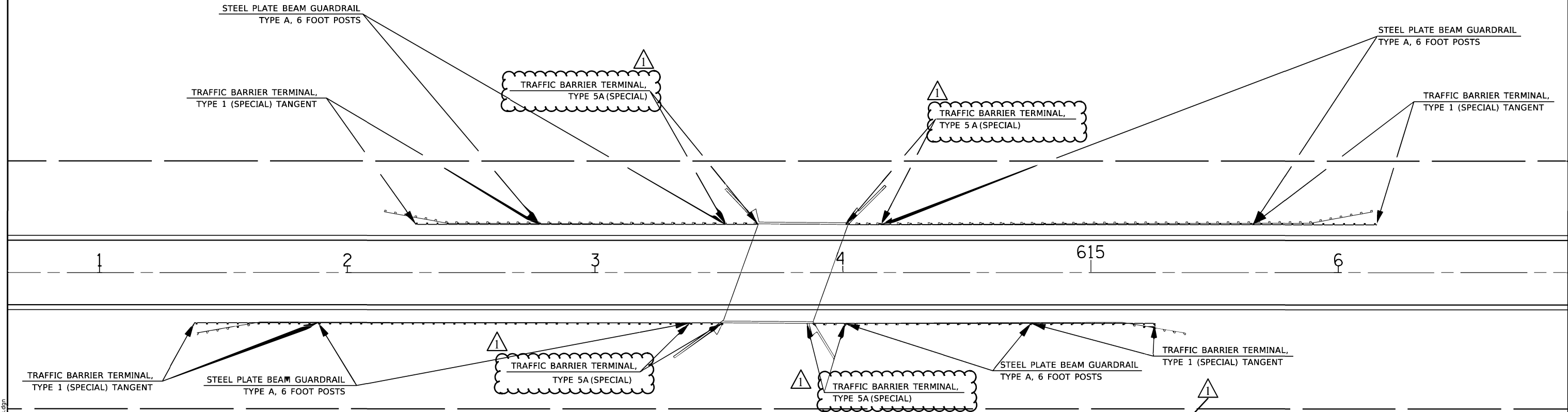
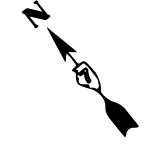
**STATE OF ILLINOIS
DEPARTMENT OF TRANSPORTATION**

GUARDRAIL DETAILS

SCALE: SHEET 2 OF 9 SHEETS STA. TO STA.

F.A.P. RTE.	SECTION	COUNTY	TOTAL SHEETS	SHEET NO.
320	(104.105)RS-4		78	67
CONTRACT NO. 74260				
* MOUTRIE AND COLES (ILLINOIS) FED. AID PROJECT				

GUARDRAIL DETAILS - LOCATION 7



STATION	OFFSET	TO	STATION	OFFSET	STEEL PLATE BEAM GUARDRAIL TYPE A, 6 FOOT POSTS 63000001 (FOOT)	TRAFFIC BARRIER TERMINAL, TYPE 5A (SPECIAL) X6311205 (EACH)	TRAFFIC BARRIER TERMINAL, TYPE 1 (SPECIAL) TANGENT 63100167 (EACH)	GUARDRAIL REMOVAL 63200310 (FOOT)	TERMINAL MARKER - DIRECT APPLIED 72501000 (EACH)	GUARDRAIL REFLECTORS, TYPE A 78200005 (EACH)
COLES COUNTY										
611+38.23	18.0' RT.		611+88.23	18.0' RT.			1.0		1.0	
611+88.23	18.0' RT.		613+38.23	18.0' RT.	150.0			213.0		4.0
613+38.23	18.0' RT.		613+51.50	18.0' RT.		1.0				
613+87.59	18.0' RT.		614+00.86	18.0' RT.		1.0				
614+00.86	18.0' RT.		614+75.86	18.0' RT.	75.0			154.0		4.0
614+75.86	18.0' RT.		615+25.86	18.0' RT.			1.0		1.0	
TOTAL SB IL-121:					225.0	2.0	2.0	367.0	2.0	8.0
612+27.59	18.0' LT.		612+77.59	18.0' LT.			1.0		1.0	
612+77.59	18.0' LT.		613+52.59	18.0' LT.	75.0			152.0		4.0
613+52.59	18.0' LT.		613+65.86	18.0' LT.		1.0				
614+02.08	18.0' LT.		614+15.34	18.0' LT.		1.0				
614+15.34	18.0' LT.		615+65.34	18.0' LT.	150.0			213.0		4.0
615+65.34	18.0' LT.		616+15.34	18.0' LT.			1.0		1.0	
TOTAL NB IL-121:					225.0	2.0	2.0	365.0	2.0	8.0
GRAND TOTAL					450.0	4.0	4.0	732.0	4.0	16.0

△ REV. 1-7-2020

MODEL: Default
FILE: M:\MS\Projects\104105\104105R5-4\CADD\Drawings\104105R5-4-GUARDRAIL-DETAILS.dgn

USER NAME = steffemk	DESIGNED -	REVISED -
DRAWN -	REVISOR -	
PLOT SCALE = 100.0000' / in.	CHECKED -	REVISOR -
PLOT DATE = 10/16/2019	DATE -	REVISOR -

**STATE OF ILLINOIS
DEPARTMENT OF TRANSPORTATION**

GUARDRAIL DETAILS

SCALE: SHEET 7 OF 9 SHEETS STA. TO STA.

F.A.P. RTE.	SECTION	COUNTY	TOTAL SHEETS	SHEET NO.
320	(104,105)RS-4	*	78	71
CONTRACT NO. 74260				
ILLINOIS FED. AID PROJECT				

* MOULTRIE AND COLES