

STATE OF ILLINOIS
DEPARTMENT OF TRANSPORTATION

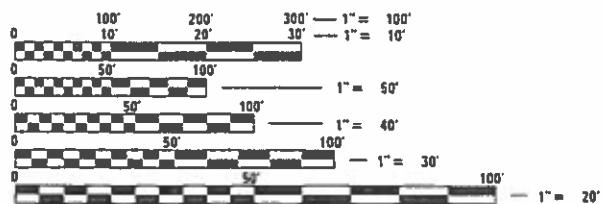
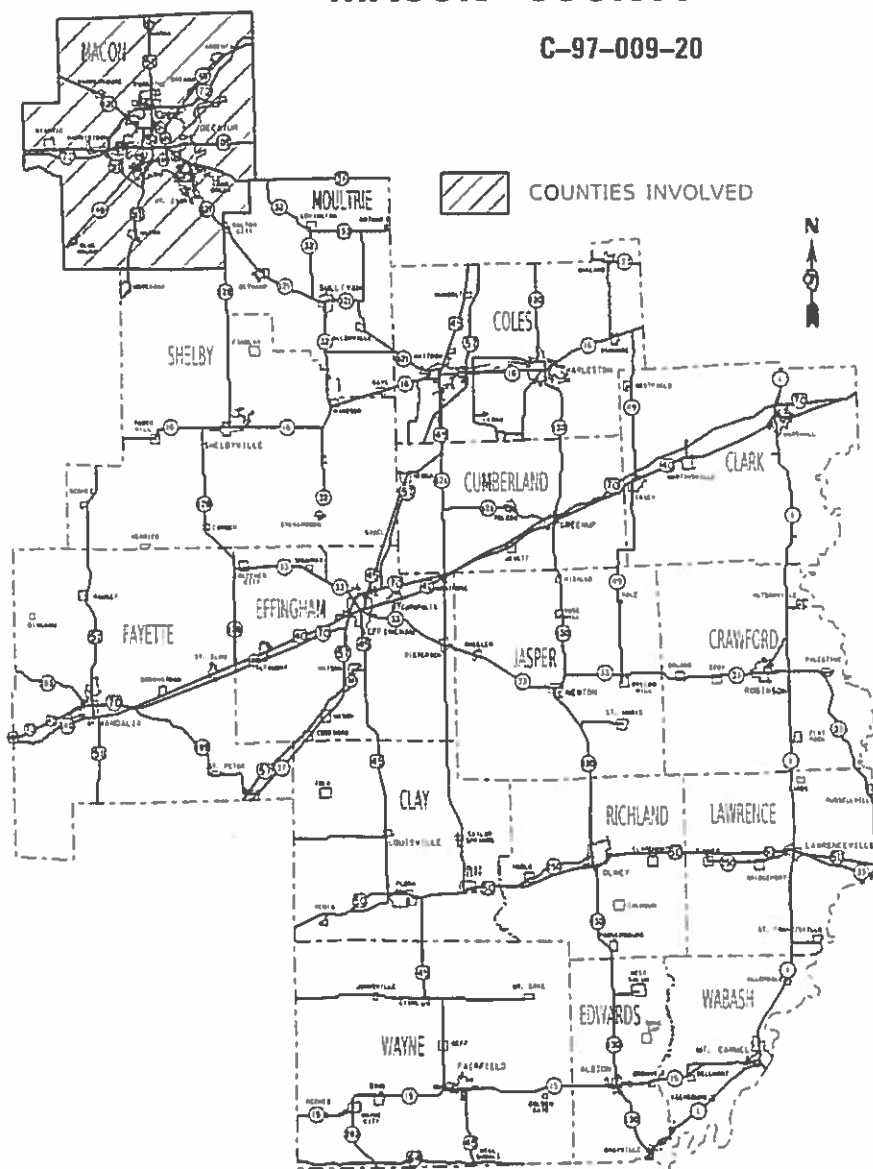
| F.A.P. ROUTE | SECTION | COUNTY | TOTAL SHEETS | SHEET NO. |
|--------------|--------------------|----------|--------------------|-----------|
| 320 | D7 PATCHING 2020-5 | MACON | 4 | 1 |
| | | ILLINOIS | CONTRACT NO. 74933 | |

FOR INDEX OF SHEETS, SEE SHEET NO. 2

PROPOSED HIGHWAY PLANS

FAP ROUTE 320 (ILL 121)
SECTION D7 PATCHING 2020-5
PARTIAL DEPTH PATCHING
MACON COUNTY

C-97-009-20



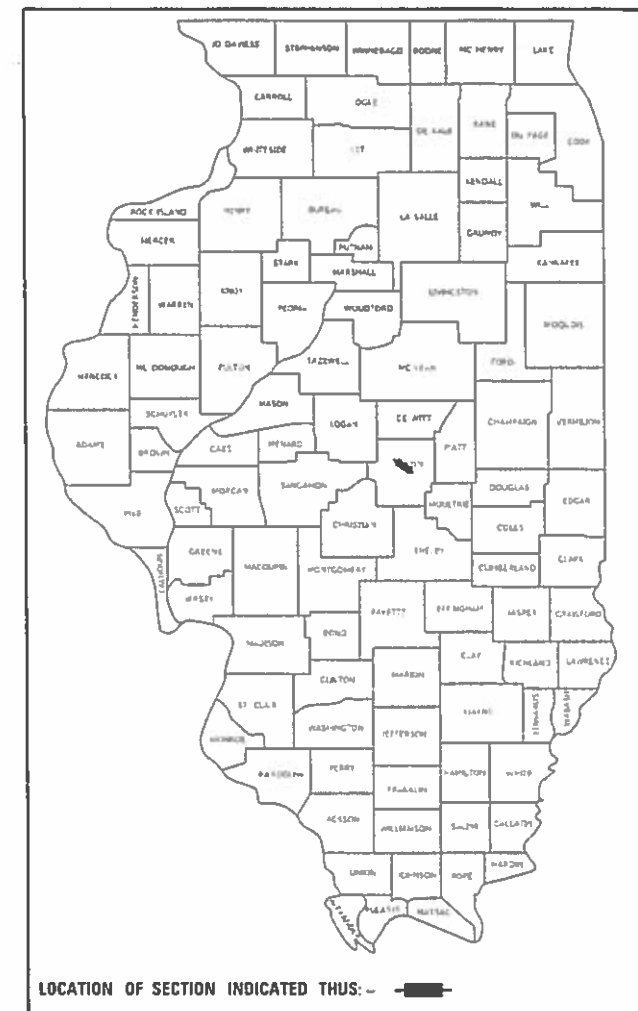
FULL SIZE PLANS HAVE BEEN PREPARED USING STANDARD ENGINEERING SCALES. REDUCED SIZED PLANS WILL NOT CONFORM TO STANDARD SCALES. IN MAKING MEASUREMENTS ON REDUCED PLANS, THE ABOVE SCALES MAY BE USED.

J.U.L.I.E.
JOINT UTILITY LOCATION INFORMATION FOR EXCAVATORS
1-800-892-0123
OR 811

PROJECT ENGINEER: THOMAS RONAN
PROJECT MANAGER: THOMAS RONAN
PHONE: (217)-342-8320
CONTRACT NO. 74933

GROSS LENGTH = 12,830.40 FT. = 2.43 MILES
NET LENGTH = 12,830.40 FT. = 2.43 MILES

D-97-009-20



STATE OF ILLINOIS
DEPARTMENT OF TRANSPORTATION

SUBMITTED OCTOBER 1 20 19
Jeffrey P. Myrka
REGIONAL ENGINEER

Dec 6 20 19
[Signature]
ENGINEER OF DESIGN AND ENVIRONMENT

Dec 10 20 19
[Signature]
DIRECTOR OF HIGHWAYS PROJECT IMPLEMENTATION

PRINTED BY THE AUTHORITY
OF THE STATE OF ILLINOIS

| SHEET NO. | ITEM |
|-----------|---|
| 1 | COVER SHEET |
| 2 | INDEX OF SHEETS, GENERAL NOTES, SCHEDULE OF QUANTITIES AND DETECTOR LOOP TABLE |
| 3 | SUMMARY OF QUANTITIES |
| 4 | LOCATION MAP |

THE FOLLOWING STANDARDS ARE A PART OF THESE PLANS AND ARE INCLUDED AFTER SHEET NO. 4 :

| STD. NO. | DESCRIPTION |
|-----------|---|
| 000001-07 | STANDARD SYMBOLS, ABBREVIATIONS AND PATTERNS |
| 001006 | DECIMAL OF AN INCH AND OF A FOOT |
| 701101-05 | OFF-ROAD OPERATIONS, MULTI-LANE, 15' TO 24' FROM PAVEMENT EDGE |
| 701106-02 | OFF-ROAD OPERATIONS, MULTILANE, MORE THAN 15' AWAY |
| 701422-10 | LANE CLOSURE, MULTI-LANE, FOR SPEEDS > 45 MPH TO 55 MPH |
| 701601-09 | URBAN LANE CLOSURE, MULTILANE, 1W OR 2W WITH NON-TRAVERSABLE MEDIAN |
| 701901-08 | TRAFFIC CONTROL DEVICES |
| 886001-01 | DETECTOR LOOP INSTALLATIONS |
| 886006-01 | TYPICAL LAYOUT FOR DETECTOR LOOPS |

GENERAL NOTES

THIS PROJECT IS LOCATED ON ILLINOIS ROUTE 121 IN MACON COUNTY. THE PROJECT STARTS AT UNIVERSITY AVENUE IN DECATUR AND EXTENDS NORTHWEST FOR 2.43 MILES TO BEARSDALE RD. THE WORK INCLUDED IN THIS SECTION CONSISTS OF PARTIAL DEPTH PAVEMENT PATCHING, TRAFFIC CONTROL AND ANY OTHER WORK NECESSARY TO COMPLETE THIS SECTION.

THE ACTUAL LOCATIONS OF PAVEMENT PATCHING AND FINAL QUANTITIES SHALL BE DETERMINED BY THE ENGINEER IN THE FIELD.

AN ESTIMATED QUANTITY OF DETECTOR LOOPS, TYPE I HAS BEEN INCLUDED TO REPLACE ANY DETECTOR LOOPS THAT ARE WITHIN THE LIMITS OF A PATCH. THE ACTUAL LOCATIONS OF DETECTOR LOOPS AND FINAL QUANTITIES SHALL BE DETERMINED BY THE ENGINEER IN THE FIELD.

| APPLICATION | AC/PG | DESIGN AIR VOIDS | MIXTURE COMPOSITION | FRICTION AGGREGATE | QUALITY MANAGEMENT |
|----------------------------|----------|------------------|---------------------|--------------------|--------------------|
| HMA PARTIAL DEPTH PATCHING | PG 64-22 | 4.0% @ N=70 | IL - 9.5FG | N/A | QC/QA |

| PATCHING SCHEDULE | | | | | | | | | | |
|-------------------|---------|--------|-------|------------------------|--------------------------------|---------------------------------|----------------------------------|---------------------------------|-----|-----|
| LANE | STATION | LENGTH | WIDTH | PARTIAL DEPTH PATCHING | PARTIAL DEPTH REMOVAL, TYPE I, | PARTIAL DEPTH REMOVAL, TYPE II, | PARTIAL DEPTH REMOVAL, TYPE III, | PARTIAL DEPTH REMOVAL, TYPE IV, | | |
| | | | | | 2" SQ YD | 2" SQ YD | 2" SQ YD | 2" SQ YD | | |
| | | FEET | FEET | TONS | | | | | | |
| EB | 923+00 | 70 | 3 | 2.6 | | 23.3 | | | | |
| EB | 956+00 | 180 | 3 | 6.7 | | | 60 | | | |
| EB | 977+50 | 200 | 3 | 7.5 | | | 66.7 | | | |
| EB | 981+00 | 280 | 3 | 10.5 | | | 93.3 | | | |
| EB | 994+34 | 68 | 3 | 2.5 | | 22.7 | | | | |
| EB | 1005+00 | 105 | 3 | 3.9 | | 35 | | | | |
| EB | 1006+00 | 560 | 3 | 20.9 | | | | 186.7 | | |
| EB | 1012+00 | 85 | 3 | 3.2 | | 28.3 | | | | |
| EB | 1013+00 | 190 | 3 | 7.1 | | | 63.3 | | | |
| EB | 1017+50 | 222 | 3 | 8.3 | | | 74 | | | |
| WB | 1019+50 | 320 | 3 | 11.9 | | | | 106.7 | | |
| WB | 1015+00 | 206 | 3 | 7.7 | | | 68.7 | | | |
| WB | 1012+50 | 147 | 3 | 5.5 | | 49 | | | | |
| WB | 1009+00 | 170 | 3 | 6.3 | | | 56.7 | | | |
| WB | 1007+00 | 71 | 3 | 2.7 | | 23.7 | | | | |
| WB | 1004+00 | 20 | 3 | 0.75 | 6.7 | | | | | |
| WB | 995+00 | 246 | 3 | 9.2 | | | 82 | | | |
| WB | 991+00 | 45 | 3 | 1.7 | | 15 | | | | |
| WB | 980+00 | 120 | 3 | 4.5 | | 40 | | | | |
| WB | 974+00 | 180 | 3 | 6.7 | | | 60 | | | |
| WB | 962+00 | 102 | 3 | 3.9 | | 34 | | | | |
| WB | 962+00 | 85 | 3 | 3.2 | | 28.3 | | | | |
| WB | 954+00 | 85 | 3 | 3.2 | | 28.3 | | | | |
| WB | 947+00 | 50 | 3 | 1.9 | | 16.7 | | | | |
| WB | 939+00 | 50 | 3 | 1.9 | | 2 | | | | |
| | | | | | TOTALS | 144 | 7 | 346 | 625 | 293 |

NUMBER OF TURNS REQUIRED IN DETECTOR LOOPS

| 6 X 6 | 6 X 30 | 6 X 40 | LOOP SIZE |
|-----------|-----------|-----------|-----------|
| | 0 491 | 0 627 | 2 TURNS |
| | 492 982 | 628 1255 | 3 TURNS |
| 0 545 | 983 1636 | 1256 2091 | 4 TURNS |
| 546 818 | 1637 2455 | 2092 3136 | 5 TURNS |
| 819 1145 | 2456 3436 | | 6 TURNS |
| 1146 1527 | | | 7 TURNS |
| 1528 1964 | | | 8 TURNS |
| 1965 2455 | | | 9 TURNS |
| 2456 3000 | | | 10 TURNS |

MODEL: Default
FILE: h:\mhc\p\pub\mcom\ad\illinois.gov\PROJECTS\DOT\Documents\DOT_Offices\Illinet_7\Projects\74933\CADD\DATA\CAD\sheets\DOT74933-sht-01.dgn

| | | |
|------------------------------|------------|-----------|
| USER NAME = stefenmk | DESIGNED - | REVISED - |
| | DRAWN - | REVISED - |
| PLOT SCALE = 40.0000 ' / in. | CHECKED - | REVISED - |
| PLOT DATE = 10/2/2019 | DATE - | REVISED - |

STATE OF ILLINOIS DEPARTMENT OF TRANSPORTATION

| INDEX OF SHEETS, GENERAL NOTES, SCHEDULE OF QUANTITIES AND DETECTOR LOOP TABLE | | | |
|---|---------|-------------|--------------|
| SCALE: N/A | SHEET 1 | OF 1 SHEETS | STA. TO STA. |

| F.A.P. RTE. | SECTION | COUNTY | TOTAL SHEETS | SHEET NO. |
|-------------|--------------------|----------|--------------------|-----------|
| 320 | D7 PATCHING 2020-5 | MACON | 4 | 2 |
| | | | CONTRACT NO. 74933 | |
| | | ILLINOIS | FED. AID PROJECT | |

100%
STATE

| SUMMARY OF QUANTITIES | | | TOTAL QUANTITIES | CONSTRUCTION TYPE CODE | | |
|-----------------------|--|--------|------------------|------------------------|--|--|
| CODE NO | ITEM | UNIT | | 0006 | | |
| 67100100 | MOBILIZATION | L SUM | 1 | 1 | | |
| 70100320 | TRAFFIC CONTROL AND PROTECTION, STANDARD | L SUM | 1 | 1 | | |
| | 701422 | | | | | |
| 70102630 | TRAFFIC CONTROL AND PROTECTION, STANDARD | L SUM | 1 | 1 | | |
| | 701601 | | | | | |
| 70107025 | CHANGEABLE MESSAGE SIGN | CAL DA | 28 | 28 | | |
| * 88600100 | DETECTOR LOOP, TYPE I | FOOT | 750 | 750 | | |
| X4406020 | PARTIAL DEPTH REMOVAL, TYPE I, 2" | SQ YD | 7 | 7 | | |
| X4406220 | PARTIAL DEPTH REMOVAL, TYPE II, 2" | SQ YD | 346 | 346 | | |
| X4406420 | PARTIAL DEPTH REMOVAL, TYPE III, 2" | SQ YD | 625 | 625 | | |
| X4406620 | PARTIAL DEPTH REMOVAL, TYPE IV, 2" | SQ YD | 293 | 293 | | |
| X4421000 | PARTIAL DEPTH PATCHING | TON | 144 | 144 | | |
| | | | | | | |
| | | | | | | |
| | | | | | | |
| | | | | | | |
| | | | | | | |
| | | | | | | |
| | | | | | | |
| | | | | | | |
| | | | | | | |
| | | | | | | |
| | | | | | | |
| | | | | | | |

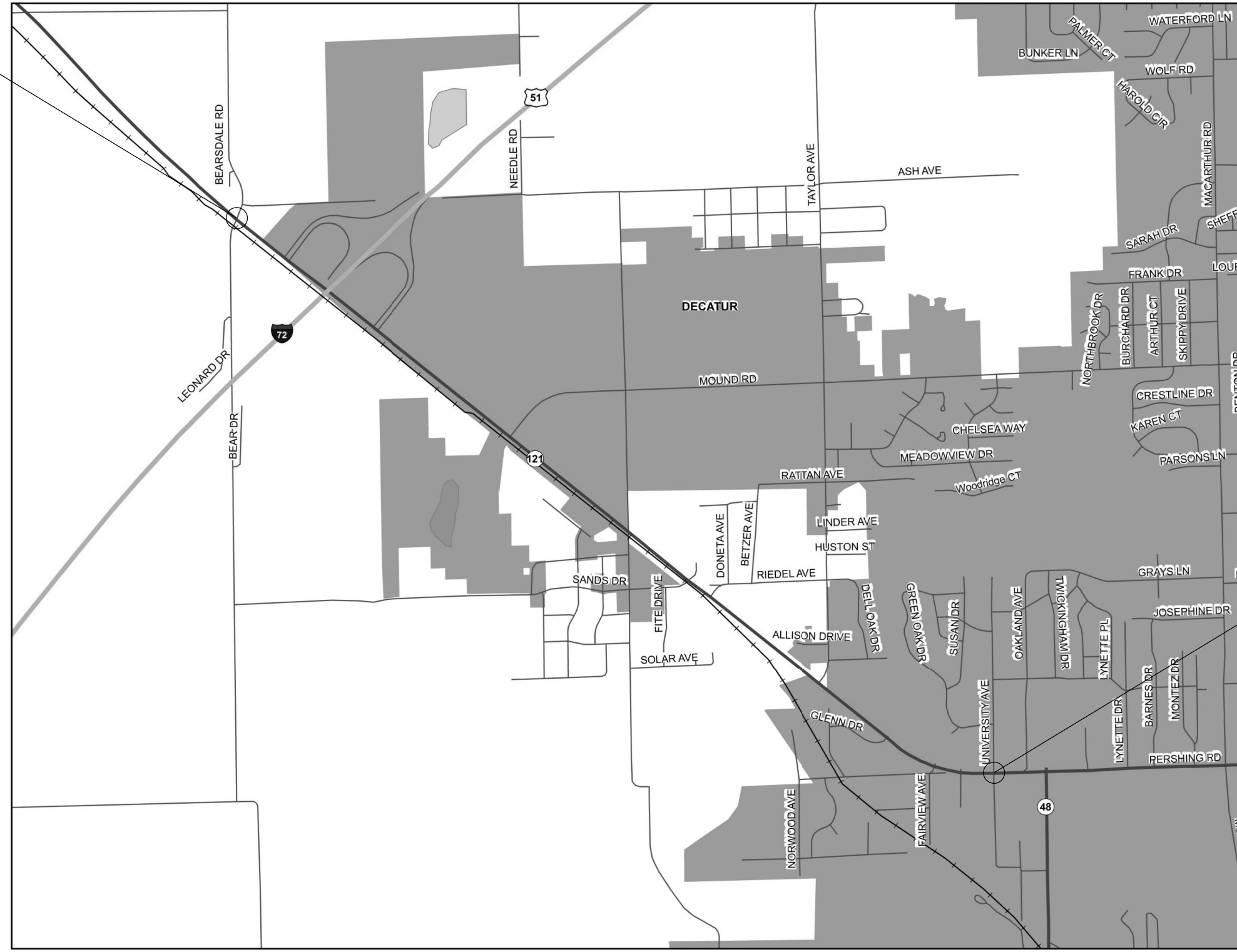
* SPECIALTY ITEM

MODEL: Default
 FILE: \\blm1c01.pw.state.il.us\pub\lanscom\data\illinois.gov\PW\DOT\Documents\DOT_Offices\District_7\Projects\74933\CAAD\ataCAD\Sheets\74933-sht-S00.dgn

| | | | | | | | | | | | |
|-----------------------------|------------|-----------|---|--|--|--|--------------------|--------------------|--------|--------------|-----------|
| USER NAME = steffenmk | DESIGNED - | REVISED - | STATE OF ILLINOIS DEPARTMENT OF TRANSPORTATION | SUMMARY OF QUANTITIES | | | F.A.P. RTE. | SECTION | COUNTY | TOTAL SHEETS | SHEET NO. |
| PLOT SCALE = 40.0000' / in. | DRAWN - | REVISED - | | | | | 320 | D7 PATCHING 2020-5 | MACON | 4 | 3 |
| PLOT DATE = 10/2/2019 | CHECKED - | REVISED - | | SCALE: N/A SHEET 1 OF 1 SHEETS STA. TO STA. | | | CONTRACT NO. 74933 | | | | |
| | DATE - | REVISED - | | ILLINOIS FED. AID PROJECT | | | | | | | |

MODEL: Default
 FILE: h:\a\1\c\p\pub\harcam.dwg
 PROJECT: 74933\CAD\DATA\CAD\harcam.dwg
 OFFICE: D:\1\74933\CAD\DATA\CAD\harcam.dwg
 DATE: 10/2/2019

PROJECT ENDS AT BEARSDALE ROAD
 AND ILLINOIS ROUTE 121



PROJECT BEGINS AT UNIVERSITY
 AVENUE AND ILLINOIS ROUTE 121

**STATE OF ILLINOIS
 DEPARTMENT OF TRANSPORTATION**

LOCATION MAP

| | | |
|------------------------------|------------|-----------|
| USER NAME = steffenmk | DESIGNED - | REVISED - |
| PLOT SCALE = 40,0000 ' / in. | DRAWN - | REVISED - |
| PLOT DATE = 10/2/2019 | CHECKED - | REVISED - |
| | DATE - | REVISED - |

SCALE: N/A SHEET 1 OF 1 SHEETS STA. TO STA.

| F.A.P. RTE. | SECTION | COUNTY | TOTAL SHEETS | SHEET NO. |
|---------------------------|--------------------|--------|--------------|-----------|
| 320 | D7 PATCHING 2020-5 | MACON | 4 | 4 |
| CONTRACT NO. 74933 | | | | |
| ILLINOIS FED. AID PROJECT | | | | |