

FOR INDEX OF SHEETS, SEE SHEET NO. 2

FUNCTIONAL CLASSIFICATION: OTHER PRINCIPAL ARTERIAL  
 ADT: 22,500 (2005), 28,620 (2021)  
 DESIGN SPEED LIMIT: 40 MPH  
 POSTED SPEED LIMIT: 40 MPH

**SCOPE OF WORK**

THE BRIDGE SUPERSTRUCTURE WILL HAVE REPAIRS TO THE DECK AND TO THE JOINTS. THE OVERLAY WILL BE REMOVED AND REPLACED.

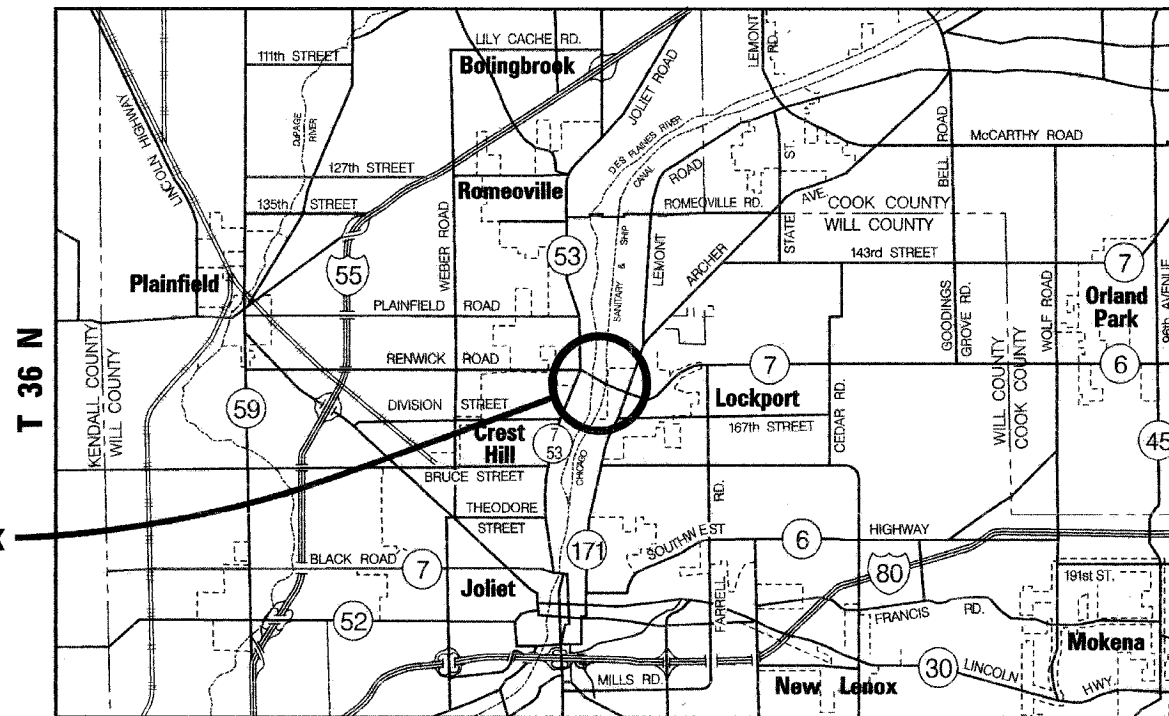
IMPROVEMENTS LOCATED IN THE TOWN OF LOCKPORT, WILL COUNTY

STATE OF ILLINOIS  
 DEPARTMENT OF TRANSPORTATION  
 DIVISION OF HIGHWAYS  
**PROPOSED  
 HIGHWAY PLANS**

F.A.P. RTE. 351 / IL. RTE. 7  
 SECTION: 2007-025-I

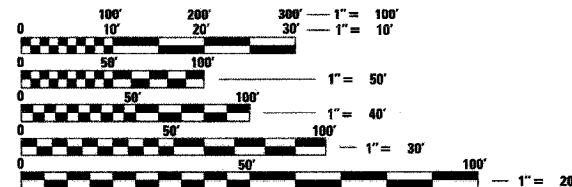
IL. RTE. 7 OVER DES PLAINES RIVER, SANITARY & SHIP CANAL & A.T. & S.F. R.R.  
 S.N. 099-0185  
**BRIDGE DECK REPAIR & OVERLAY**  
**WILL COUNTY**  
 C-91-278-07

R 10 E



**LOCATION MAP**  
 NOT TO SCALE

LOCATION OF WORK  
 IL. RTE. 7  
 S.N. 099-0185



FULL SIZE PLANS HAVE BEEN PREPARED USING STANDARD ENGINEERING SCALES. REDUCED SIZED PLANS WILL NOT CONFORM TO STANDARD SCALES. IN MAKING MEASUREMENTS ON REDUCED PLANS, THE ABOVE SCALES MAY BE USED.

J.U.L.I.E.  
 JOINT UTILITY LOCATION INFORMATION FOR EXCAVATION  
 1-800-892-0123  
 C.U.A.N.  
 CHICAGO UTILITY ALERT NETWORK  
 1-312-744-7000

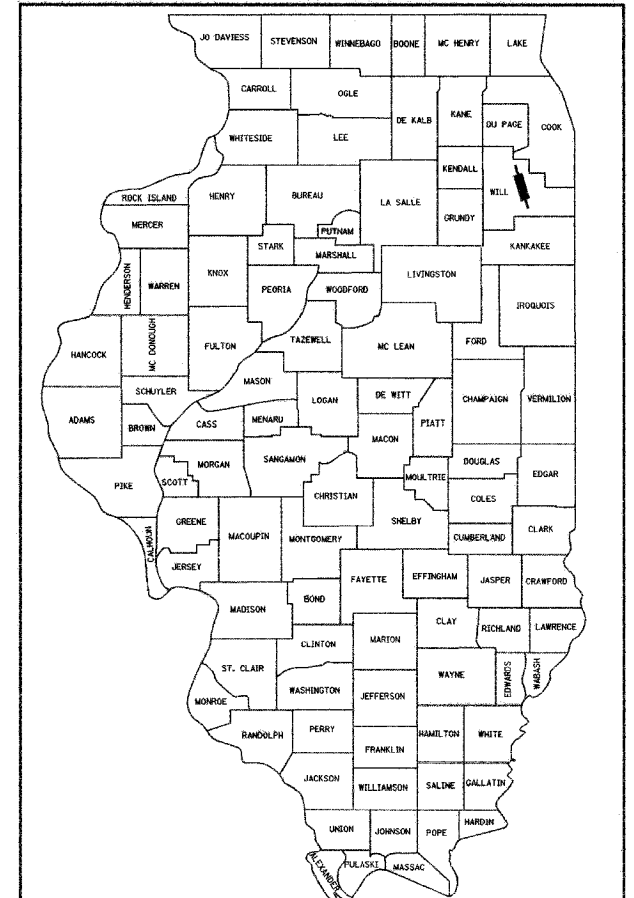
CONTRACT NO. 60C93

GROSS & NET LENGTH = 3,173 FT. = 0.60 MILES

F.A.P. RTE.	SECTION	COUNTY	TOTAL SHEETS	SHEET NO.
351	2007-025-I	WILL	18	1
STA.	TO STA.			
FED. ROAD DIST. NO.	ILLINOIS	FED. AID PROJECT		

CONTRACT NO. 60C93

D-91-278-07



LOCATION OF SECTION INDICATED THUS: -



Bhadresh N. Shah  
 BHADRESH N. SHAH  
 LICENSED STRUCTURAL ENGINEER  
 STATE OF ILLINOIS LIC. No. 081-004476  
 EXPIRES: 11-30-08



CHRISTIAN-ROGE & ASSOCIATES, INC.  
 ENGINEERS / PLANNERS / SURVEYORS  
 211 W. WACKER DRIVE CHICAGO, IL. 60606  
 TELEPHONE: 312-372-2023

STATE OF ILLINOIS  
 DEPARTMENT OF TRANSPORTATION  
 DIVISION OF HIGHWAYS

SUBMITTED October 25 20 07

Biane O'Keefe  
 DEPUTY DIRECTOR OF HIGHWAYS, REGION ENGINEER  
 December 7, 20 07

Eric E. Haral  
 INTERIM ENGINEER OF DESIGN AND ENVIRONMENT  
 December 7, 20 07

Christine M. Reed  
 DIRECTOR OF HIGHWAYS, CHIEF ENGINEER

PRINTED BY THE AUTHORITY  
 OF THE STATE OF ILLINOIS

DISTRICT ONE - DESIGN PLAN PREPARATION ENGINEER:  
 J. DOMINGUEZ / RAGHUPATI SINHA (847) 705-4209