

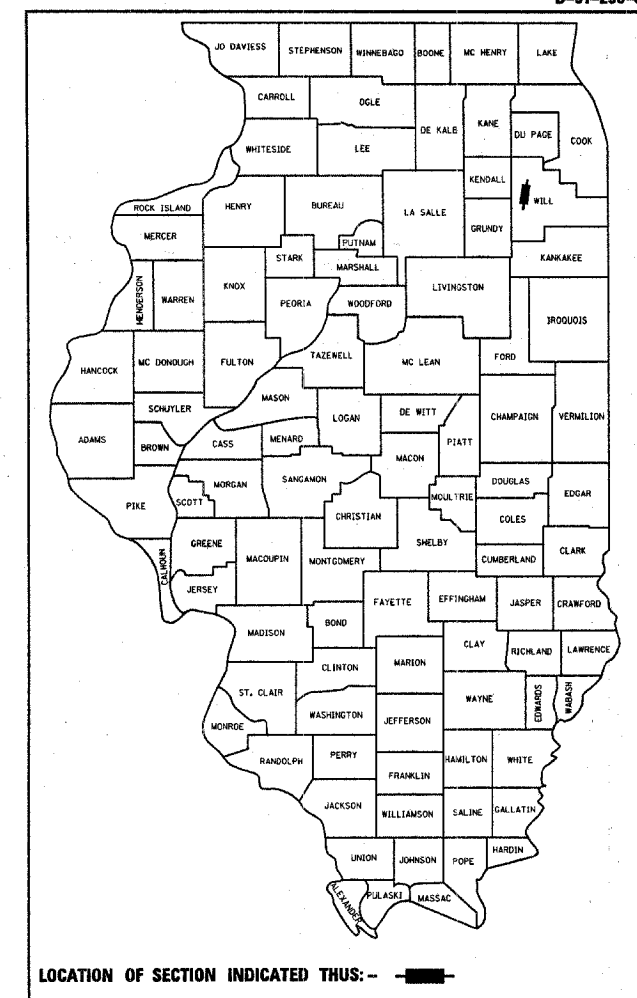
STATE OF ILLINOIS
DEPARTMENT OF TRANSPORTATION
DIVISION OF HIGHWAYS

PROPOSED HIGHWAY PLANS

F.A.P. ROUTE 112: ILL 53
RUBY ST. TO JACKSON ST.
SECTION 2007-27 RS
RESURFACING (MAINTENANCE)
WILL COUNTY
C-91-290-07

F.A.P. RTE.	SECTION	COUNTY	TOTAL SHEETS	SHEET NO.
112	2007-027 RS	WILL	15	1
FED. ROAD DIST. NO.	ILLINOIS	CONTRACT NO. 60D02		

D-91-290-07

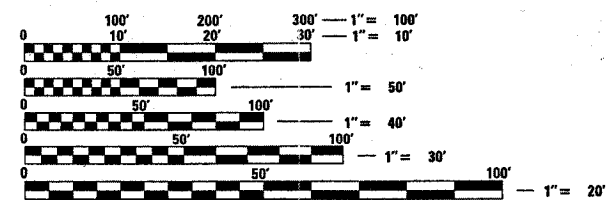


FOR INDEX OF SHEETS, SEE SHEET NO. 2

IMPROVEMENT LOCATED
IN THE CITY OF JOLIET



TRAFFIC DATA
2006 ADT = 17,000
POSTED SPEED = 30 MPH

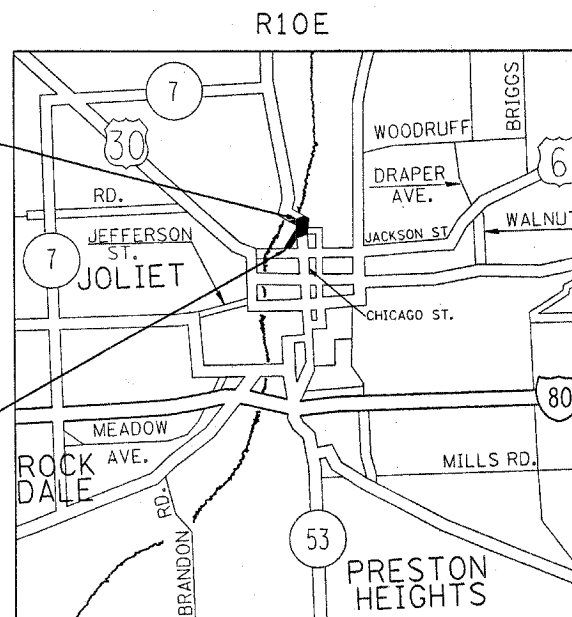


FULL SIZE PLANS HAVE BEEN PREPARED USING STANDARD ENGINEERING SCALES. REDUCED SIZED PLANS WILL NOT CONFORM TO STANDARD SCALES. IN MAKING MEASUREMENTS ON REDUCED PLANS, THE ABOVE SCALES MAY BE USED.

J.U.L.I.E.
JOINT UTILITY LOCATION INFORMATION FOR EXCAVATION
1-800-892-0123
OR 811

IMPROVEMENT ENDS:
STATION 30+12

IMPROVEMENT BEGINS:
STATION 11+81



JOLIET TOWNSHIP

GROSS & NET LENGTH OF IMPROVEMENT = 1834 FEET (0.35 MILE)

PROJECT ENGINEER - BOB BORO (847) 705-4178
PROJECT MANAGER - KEN ENG

CONTRACT NO. 60D02

STATE OF ILLINOIS
DEPARTMENT OF TRANSPORTATION
DIVISION OF HIGHWAYS

SUBMITTED November 8 20 07

Brian O'Keefe
DEPUTY DIRECTOR OF HIGHWAYS, REGION ENGINEER

December 7, 20 07
Eric E. Harman
ENGINEER OF DESIGN AND ENVIRONMENT

December 7, 20 07
Christine M. Reed
DIRECTOR OF HIGHWAYS, CHIEF ENGINEER

**PRINTED BY THE AUTHORITY
OF THE STATE OF ILLINOIS**