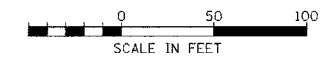
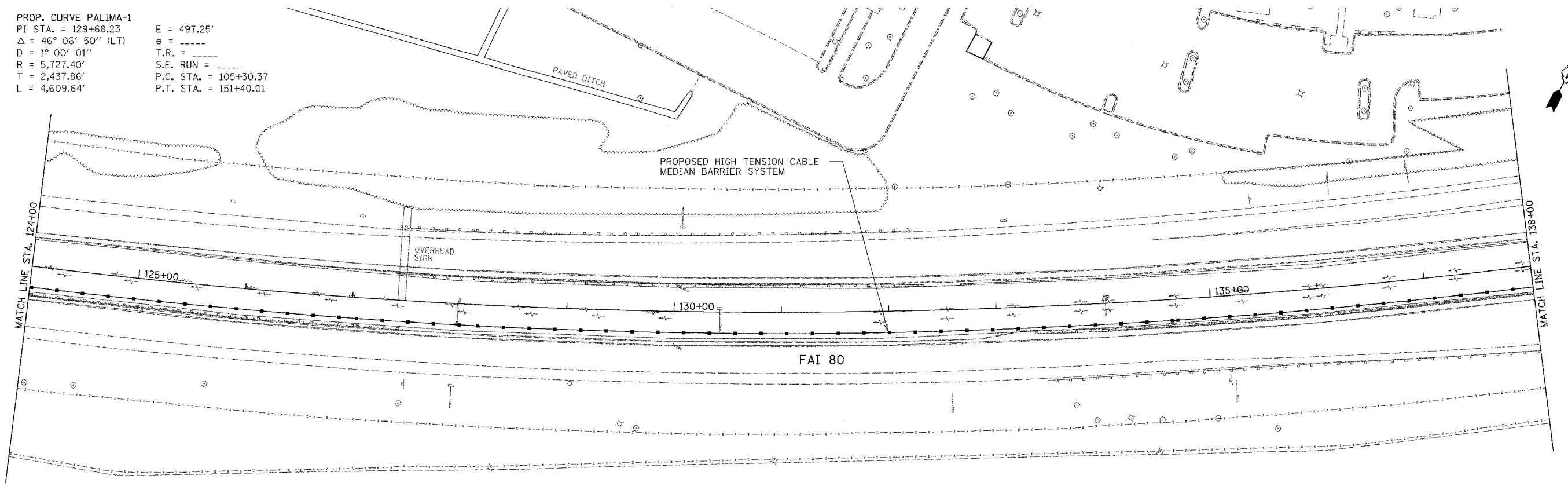
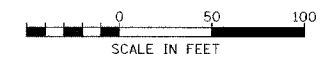
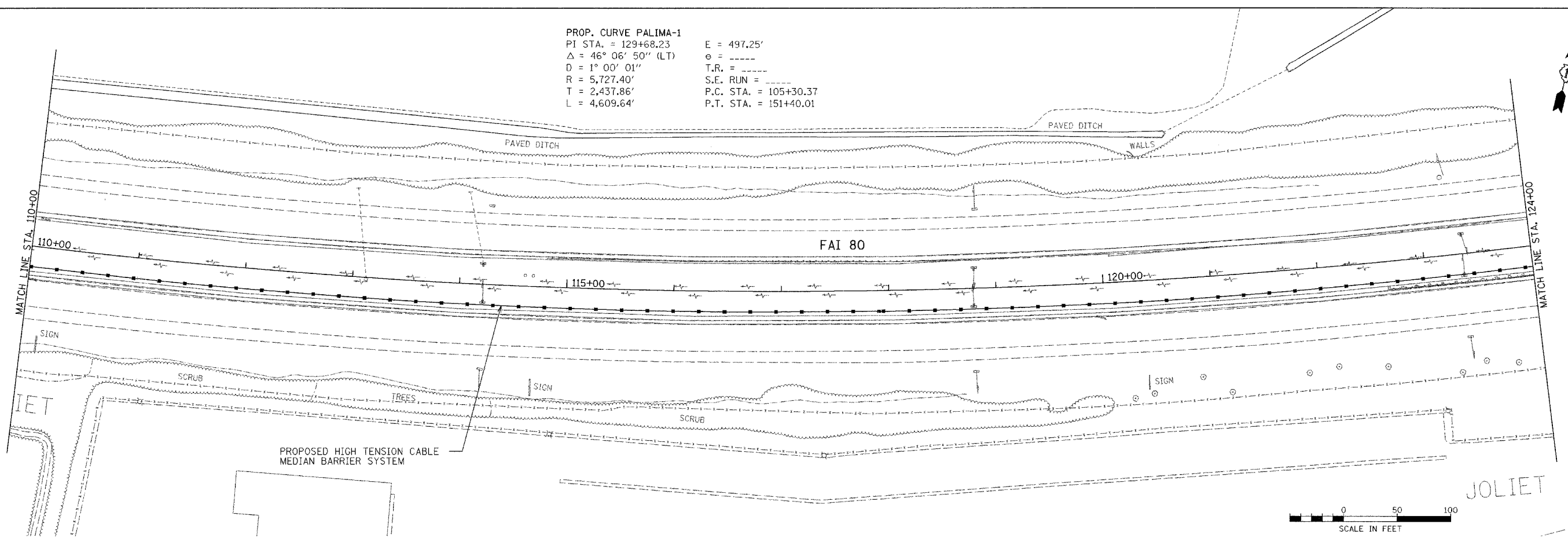


PROP. CURVE PALIMA-1
 PI STA. = 129+68.23 E = 497.25'
 Δ = 46° 06' 50" (LT) θ = -----
 D = 1° 00' 01" T.R. = -----
 R = 5,727.40' S.E. RUN = -----
 T = 2,437.86' P.C. STA. = 105+30.37
 L = 4,609.64' P.T. STA. = 151+40.01



PROP. CURVE PALIMA-1
 PI STA. = 129+68.23 E = 497.25'
 Δ = 46° 06' 50" (LT) θ = -----
 D = 1° 00' 01" T.R. = -----
 R = 5,727.40' S.E. RUN = -----
 T = 2,437.86' P.C. STA. = 105+30.37
 L = 4,609.64' P.T. STA. = 151+40.01

H:\Jobs\2006\20060328-34\CAD\DOT_Trans\ dgn\00\FAI-80_Plan03.dgn
 11/7/2007 12:23:33 PM

FILE NAME =	USER NAME = .USER.	DESIGNED -	REVISED -	STATE OF ILLINOIS DEPARTMENT OF TRANSPORTATION	EXISTING AND PROPOSED ROADWAY PLANS			F.A.I. RTE. 80	SECTION 2007-043 I	COUNTY WILL	TOTAL SHEETS 28	SHEET NO. 8			
#FILE#	PLOT SCALE = 5/8" = 1' IN.	DRAWN - EAD	REVISED -					SCALE: 50			SHEET NO. 8 OF 28 SHEETS			CONTRACT NO. 60D33	
	PLOT DATE = 11/7/2007	CHECKED - PJ	REVISED -					STA.			TO STA.			ILLINOIS FED. AID PROJECT	
		DATE - 11/07/2007	REVISED -												