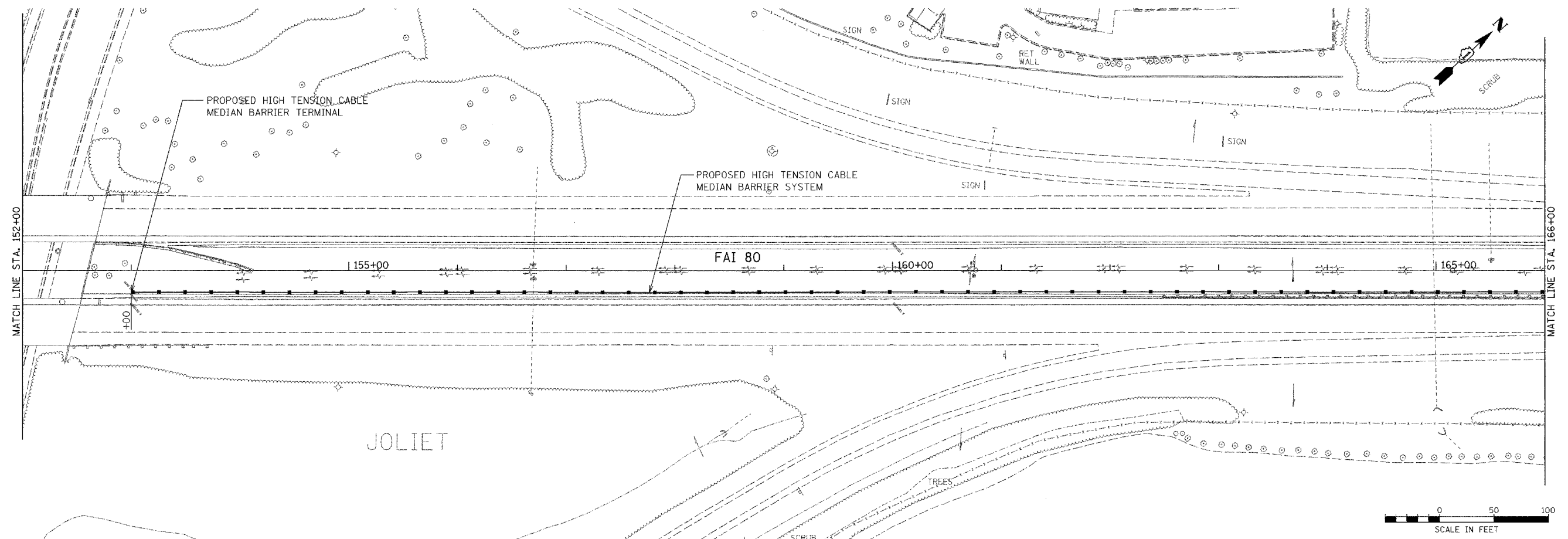
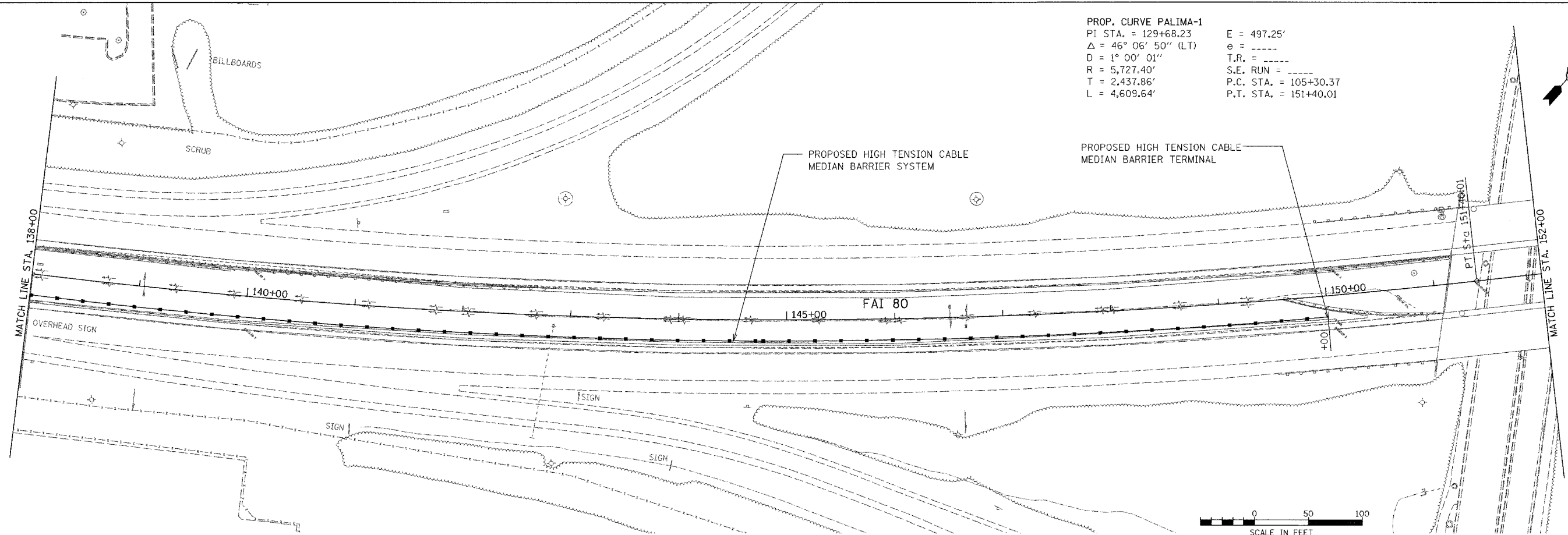
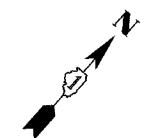


PROP. CURVE PALIMA-1
 PI STA. = 129+68.23 E = 497.25'
 $\Delta = 46^\circ 06' 50''$ (LT) e = -----
 D = $1^\circ 00' 01''$ T.R. = -----
 R = 5,727.40' S.E. RUN = -----
 T = 2,437.86' P.C. STA. = 105+30.37
 L = 4,609.64' P.T. STA. = 151+40.01



H:\Jobs\2006\20063028-3\CAD\VDOT\Trans\vdgn\00\FAI-80_Plan04.dgn
 11/7/2007 12:22:39 PM

FILE NAME =	USER NAME = .USER.	DESIGNED -	REVISED -
#FILEL*		DRAWN - EAD	REVISED -
	PLOT SCALE = 50.0000' / IN.	CHECKED - PJ	REVISED -
	PLOT DATE = 11/7/2007	DATE - 11/07/2007	REVISED -

STATE OF ILLINOIS
DEPARTMENT OF TRANSPORTATION

EXISTING AND PROPOSED ROADWAY PLANS
 SCALE: 50 SHEET NO. 9 OF 28 SHEETS STA. TO STA.

F.A.I. RTE.	SECTION	COUNTY	TOTAL SHEETS	SHEET NO.
80	2007-043 I	WILL	28	9
CONTRACT NO. 60D33				
FED. ROAD DIST. NO.		ILLINOIS FED. AID PROJECT		