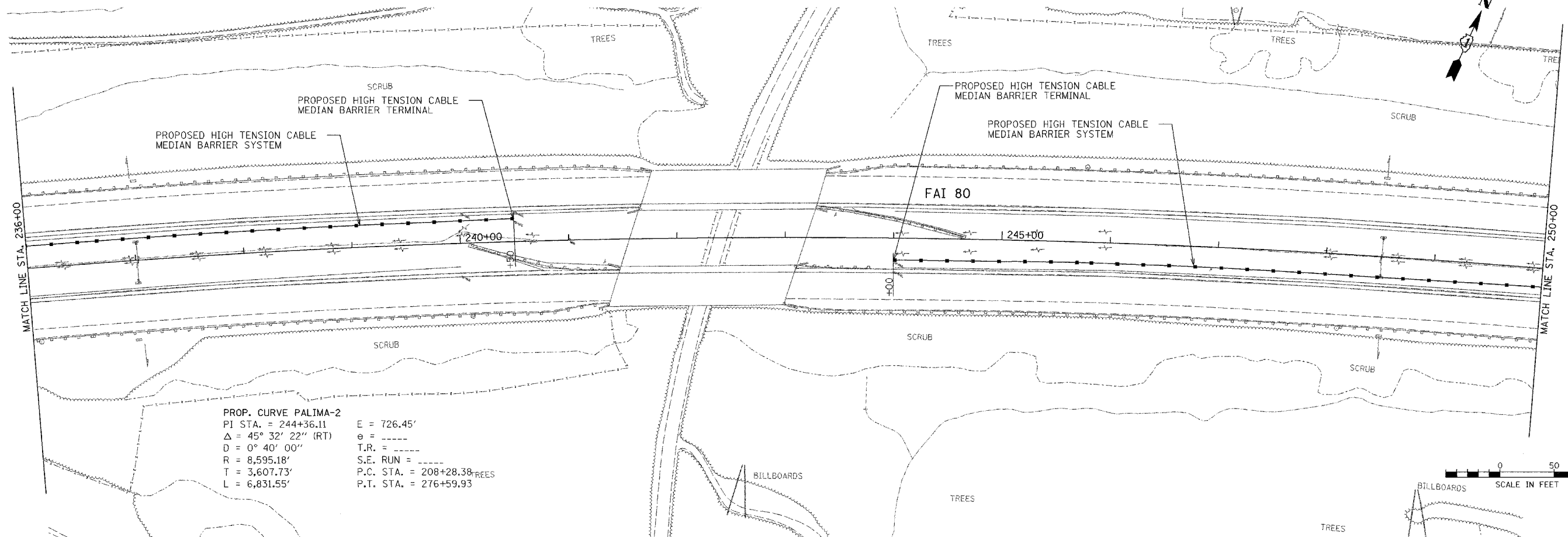
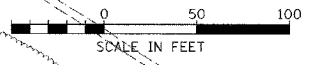
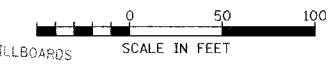


PROP. CURVE PALIMA-2
 PI STA. = 244+36.11 E = 726.45'
 Δ = 45° 32' 22" (RT) e = -----
 D = 0° 40' 00" T.R. = -----
 R = 8,595.18' S.E. RUN = -----
 T = 3,607.73' P.C. STA. = 208+28.38
 L = 6,831.55' P.T. STA. = 276+59.93



PROP. CURVE PALIMA-2
 PI STA. = 244+36.11 E = 726.45'
 Δ = 45° 32' 22" (RT) e = -----
 D = 0° 40' 00" T.R. = -----
 R = 8,595.18' S.E. RUN = -----
 T = 3,607.73' P.C. STA. = 208+28.38
 L = 6,831.55' P.T. STA. = 276+59.93



I:\Jobs\2006\20063028-34\CAU\DOT_Trans\adgn\00\FAI-80_Plan07.dgn
 11/7/2007 12:15:59 PM

FILE NAME =	USER NAME = USER	DESIGNED -	REVISED -
*FILE#		DRAWN - EAD	REVISED -
		CHECKED - PJ	REVISED -
		DATE - 11/07/2007	REVISED -

STATE OF ILLINOIS
DEPARTMENT OF TRANSPORTATION

EXISTING AND PROPOSED ROADWAY PLANS

SCALE: 50 SHEET NO. 12 OF 28 SHEETS STA. TO STA.

F.A.I. RTE. 80	SECTION 2007-043 I	COUNTY WILL	TOTAL SHEETS 28	SHEET NO. 12
CONTRACT NO. 60D33				
FED. ROAD DIST. NO. ILLINOIS FED. AID PROJECT				