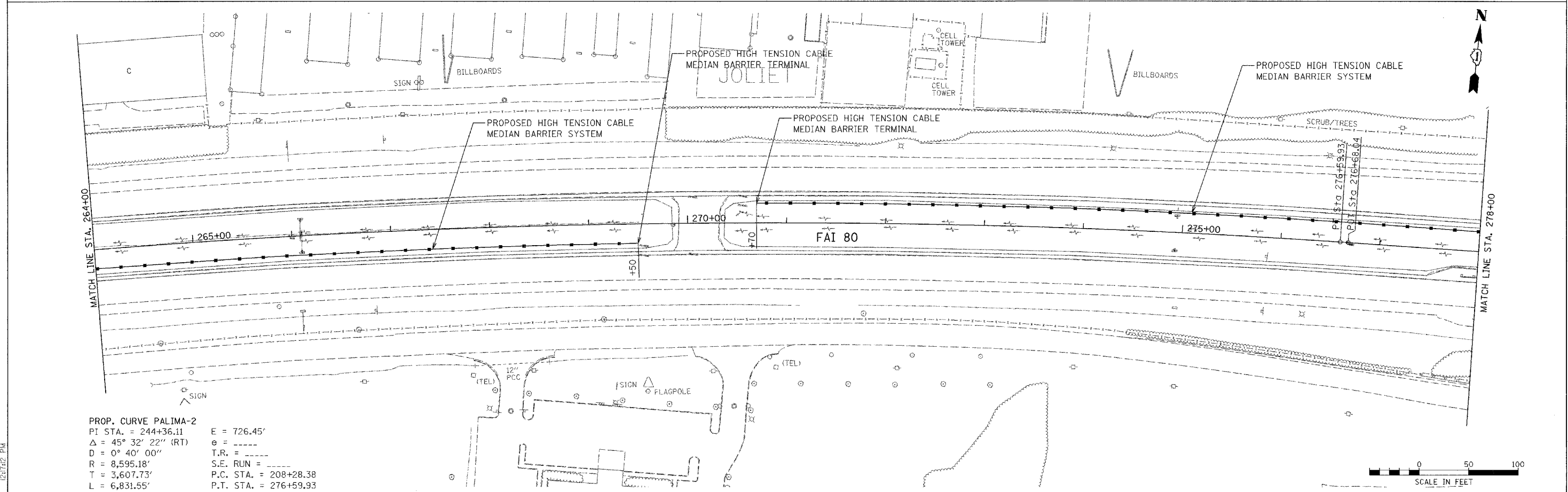
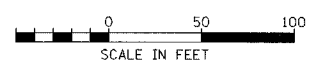


PROP. CURVE PALIMA-2  
 PI STA. = 244+36.11 E = 726.45'  
 $\Delta = 45^\circ 32' 22''$  (RT)  $e =$  -----  
 $D = 0^\circ 40' 00''$  T.R. = -----  
 R = 8,595.18' S.E. RUN = -----  
 T = 3,607.73' P.C. STA. = 208+28.38  
 L = 6,831.55' P.T. STA. = 276+59.93



PROP. CURVE PALIMA-2  
 PI STA. = 244+36.11 E = 726.45'  
 $\Delta = 45^\circ 32' 22''$  (RT)  $e =$  -----  
 $D = 0^\circ 40' 00''$  T.R. = -----  
 R = 8,595.18' S.E. RUN = -----  
 T = 3,607.73' P.C. STA. = 208+28.38  
 L = 6,831.55' P.T. STA. = 276+59.93



n:\jobs\2006\20063028-34\CAD\1007\_Trans\adgn\00\_FAI-80\_Plan08.dgn  
 11/7/2007 12:42 PM

FILE NAME =	USER NAME = .USER.	DESIGNED -	REVISED -	<b>STATE OF ILLINOIS DEPARTMENT OF TRANSPORTATION</b>	<b>EXISTING AND PROPOSED ROADWAY PLANS</b>		F.A.I. RTE.	SECTION	COUNTY	TOTAL SHEETS	SHEET NO.
#FILE#		DRAWN - EAD	REVISED -				80	2007-043 I	WILL	28	13
PLOT SCALE = 50.0001' / IN.		CHECKED - PJ	REVISED -				CONTRACT NO. 60D33				
PLOT DATE = 11/7/2007		DATE - 11/07/2007	REVISED -				FED. ROAD DIST. NO.	ILLINOIS FED. AID PROJECT			
					SCALE: 50	SHEET NO. 13 OF 28 SHEETS	STA.	TO STA.			