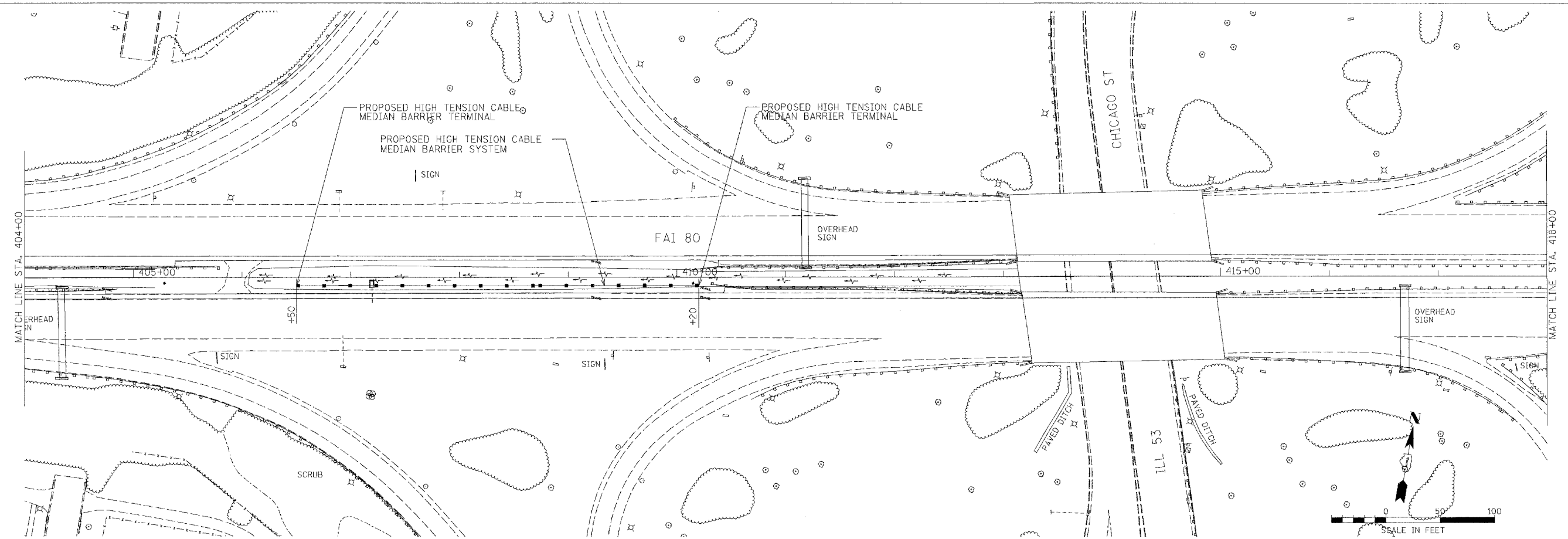
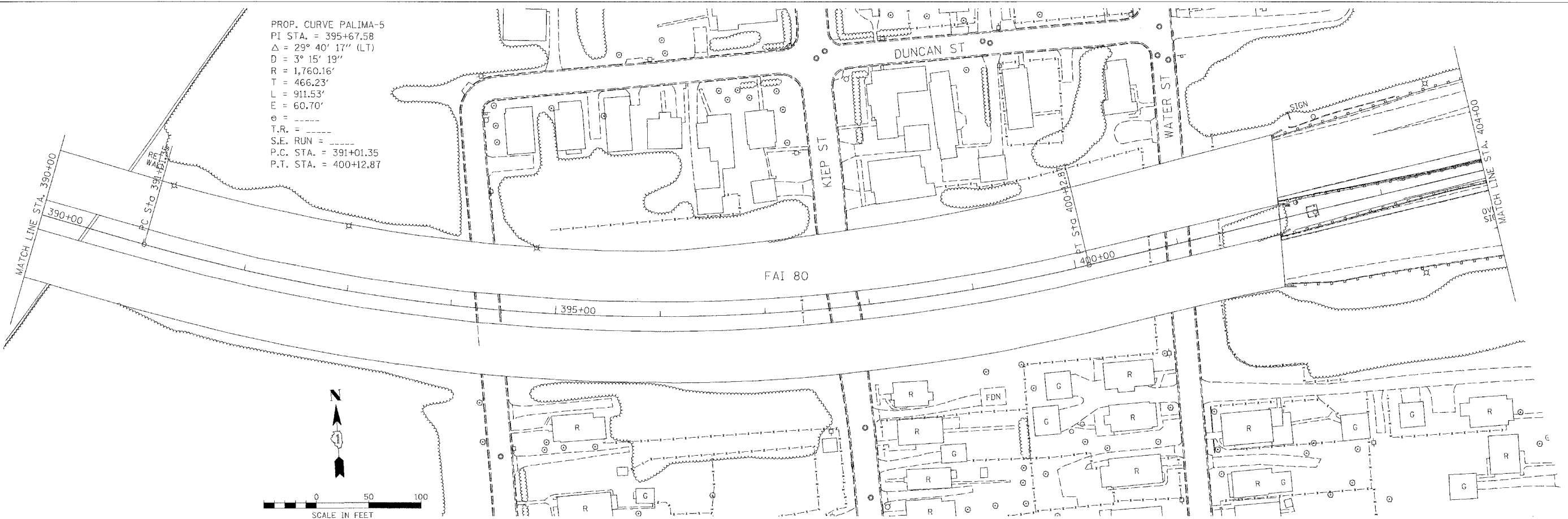


PROP. CURVE PALIMA-5  
 PI STA. = 395+67.58  
 $\Delta = 29^\circ 40' 17''$  (LT)  
 $D = 3^\circ 15' 19''$   
 $R = 1,760.16'$   
 $T = 466.23'$   
 $L = 911.53'$   
 $E = 60.70'$   
 $e = \dots$   
 T.R. = \dots  
 S.E. RUN = \dots  
 P.C. STA. = 391+01.35  
 P.T. STA. = 400+12.87



h:\Jobs\2006\20063028-34\CAD\DOT\_Templates\dot\_Templates\dot\_VFAI-80\_Plan13.dgn  
 11/7/2007 10:53:41 AM

FILE NAME =	USER NAME = .USER.	DESIGNED -	REVISED -
#FILE#		DRAWN - EAD	REVISED -
		CHECKED - PJ	REVISED -
		DATE - 11/01/2007	REVISED -

**STATE OF ILLINOIS  
 DEPARTMENT OF TRANSPORTATION**

**EXISTING AND PROPOSED ROADWAY PLANS**

SCALE: 50      SHEET NO. 18 OF 28 SHEETS      STA.      TO STA.

F.A.I. RTE.	SECTION	COUNTY	TOTAL SHEETS	SHEET NO.
80	2007-043 I	WILL	28	18
CONTRACT NO. 60D33				
FED. ROAD DIST. NO.		ILLINOIS FED. AID PROJECT		