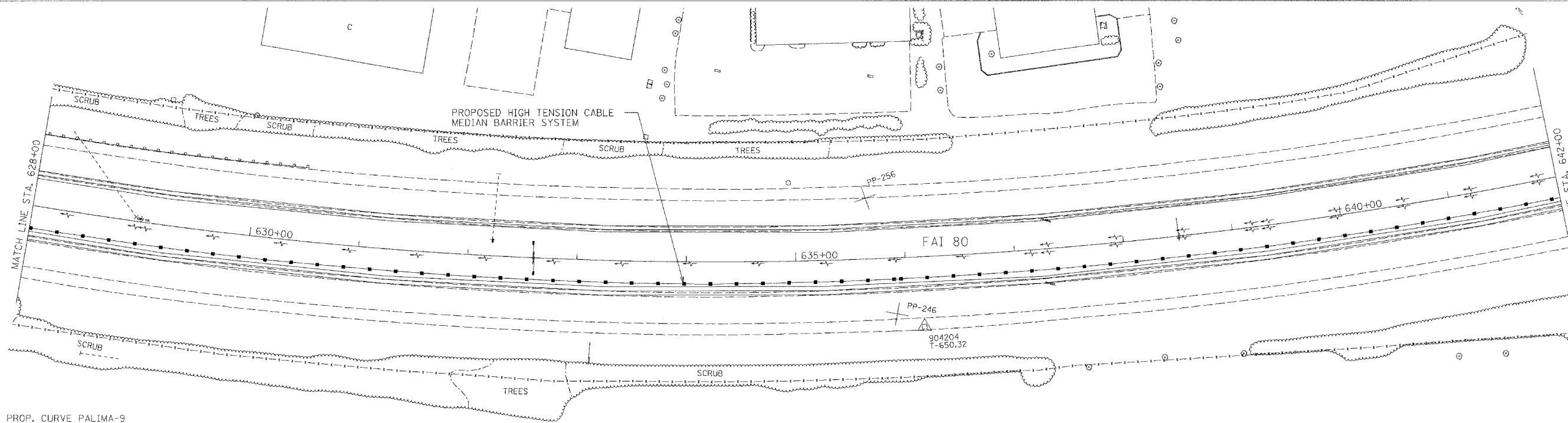
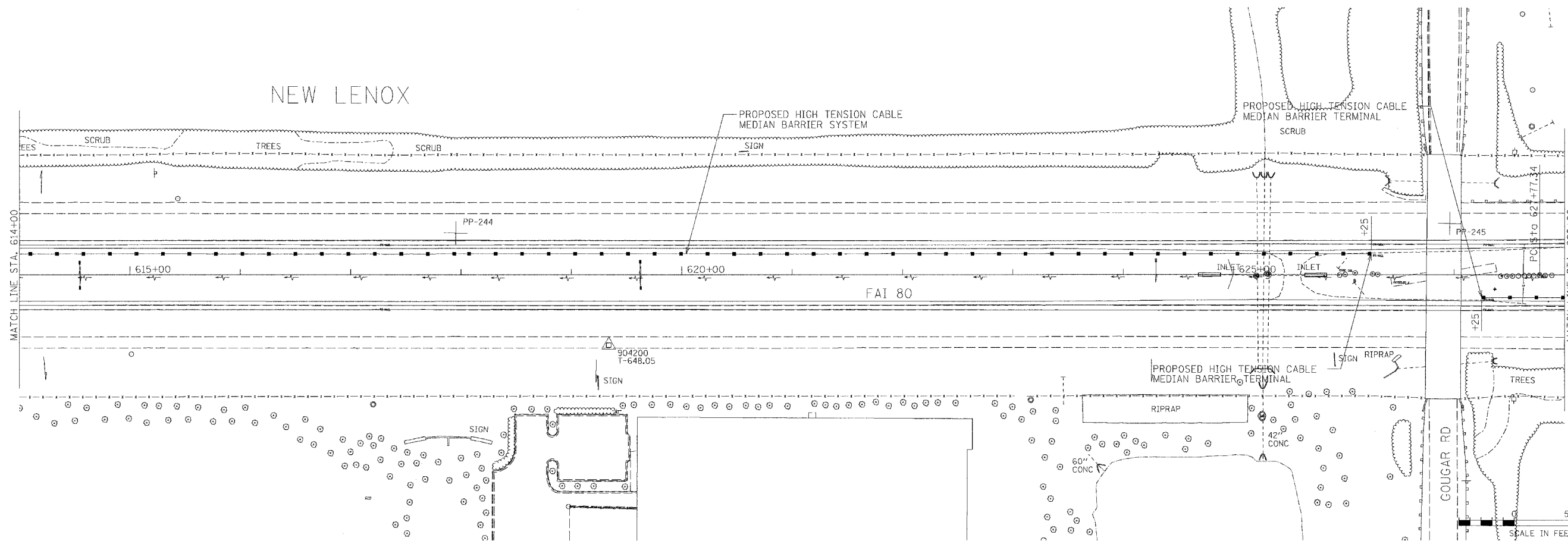


NEW LENOX



PROP. CURVE PALIMA-9
 PI STA. = 657+66.65 E = 1,030.71'
 $\Delta = 76^\circ 05' 46''$ (LT) $e =$ -----
 D = 1° 30' 00" T.R. = -----
 R = 3,819.53' S.E. RUN = -----
 T = 2,989.31' P.C. STA. = 627+77.34
 L = 5,072.83' P.T. STA. = 678+50.17

NEW LENOX

H:\Jobs\2006\20063028-3\CAD\DOT_Trans\ dgn\00\FAI-80_Plan2.dgn
 11/7/2007 11:25:38 AM

FILE NAME =	USER NAME = .USER.	DESIGNED -	REVISED -
#FILE#		DRAWN - EAD	REVISED -
	PLOT SCALE = 50.0000' / IN.	CHECKED - PJ	REVISED -
	PLOT DATE = 11/7/2007	DATE - 11/07/2007	REVISED -

STATE OF ILLINOIS
 DEPARTMENT OF TRANSPORTATION

EXISTING AND PROPOSED ROADWAY PLANS

SCALE: 50 SHEET NO. 26 OF 28 SHEETS STA. TO STA.

F.A.I. RTE.	SECTION	COUNTY	TOTAL SHEETS	SHEET NO.
80	2007-043 I	WILL	28	26
FED. ROAD DIST. NO. [ILLINOIS] FED. AID PROJECT			CONTRACT NO. 60D33	