


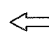

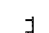
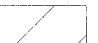
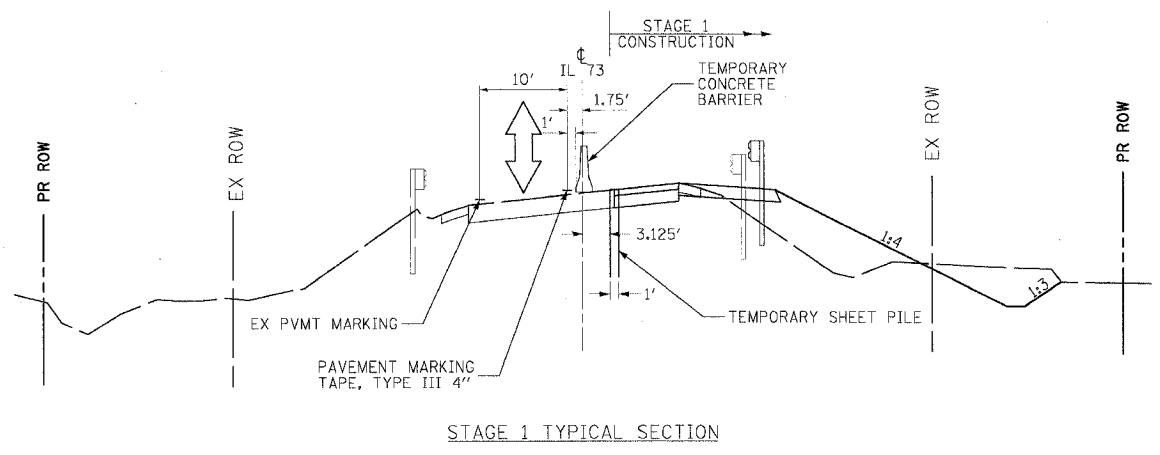


F.A.S. RTE.	SECTION	COUNTY	TOTAL SHEETS	SHEET NO.
1087	106T-1	STEPHENSON	78	19
STA. 959+00		TO STA. 963+00		
FED. ROAD DIST. NO.		ILLINOIS FED. AID PROJECT		

LEGEND

-  DRUMS (PER STD. 701321)
-  DOUBLE VERTICAL PANELS (25' C-C)
-  TRAFFIC SIGNAL
-  DIRECTION OF TRAFFIC
-  INDUCTION LOOP DETECTOR
-  TYPE III BARRICADE
-  WORK ZONE



STAGE 1 TYPICAL SECTION

STAGE 1 CONSTRUCTION

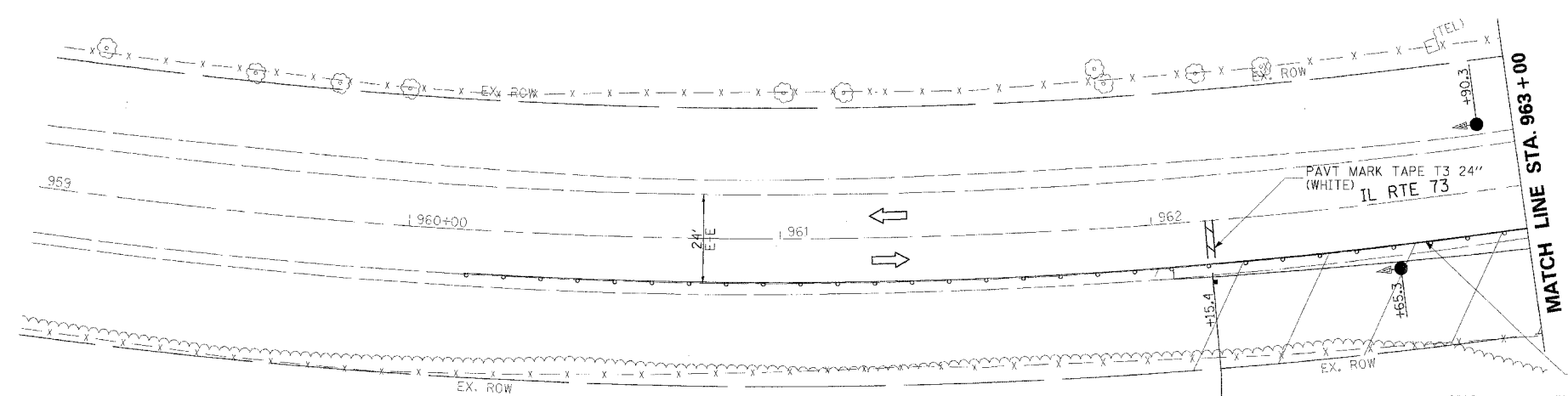
- BUILD UP EXISTING LEFT SHOULDER
- CONSTRUCT TEMPORARY SHEET PILING
- CONSTRUCT DOWNTREAM END OF PROPOSED BOX CULVERT
- CONSTRUCT PATCH OVER BOX CULVERT
- CONSTRUCT HMA SHOULDER ON RIGHT SIDE
- CONSTRUCT GUARDRAIL ON RIGHT SIDE
- CONSTRUCT TEMPORARY PAVEMENT MARKINGS
- CONSTRUCT FIELD ENTRANCE

STAGE 1 TRAFFIC

- USE STANDARD 701306 TO BUILD UP LEFT SHOULDER WITH AGGREGATE BASE COURSE, TYPE A BEFORE USING STANDARD 701321.
- USE STANDARD 701321, LANE CLOSURE, 2L, 2W, BRIDGE REPAIR WITH BARRIER FOR MAINTENANCE OF TRAFFIC FOR STAGE 2.
- USE STANDARD 701311, LANE CLOSURE 2L, 2W, MOVING OPERATIONS-DAY ONLY FOR PLACING PAVEMENT MARKINGS.
- USE STANDARD 701306 AND 701326 AS NEEDED FOR CONSTRUCTION OF SHOULDERS.
- USE STANDARDS 701001, 701006, 701011, AND 701311 AS NEEDED.

STAGE 1 NOTES

THE LOOP DETECTORS REQUIRED FOR WIRE RD SHALL BE HEAVY DUTY REINFORCED RUBBER CONDUIT DETECTOR LOOPS INSTALLED AS SHOWN ON STANDARD 701321.



DRUMS, SIGNS, RUMBLE STRIPS AND INDUCTION LOOP DETECTORS ACCORDING TO STANDARD 701321



R:O-6A-2430

REVISIONS	
NAME	DATE

ILLINOIS DEPARTMENT OF TRANSPORTATION
MAINTENANCE OF TRAFFIC
 IL RTE 73 CULVERT REPLACEMENTS
 STAGE 1 - SN 089-1109

SCALE: VERT.: N.A.
 HORIZ.: 1:20
 DATE: OCTOBER 1, 2007
 DRAWN BY: DLZ
 CHECKED BY: GB

PLOT DATE = 08/07/07
 FILE NAME = 081001.dwg
 USER NAME = GIBSON