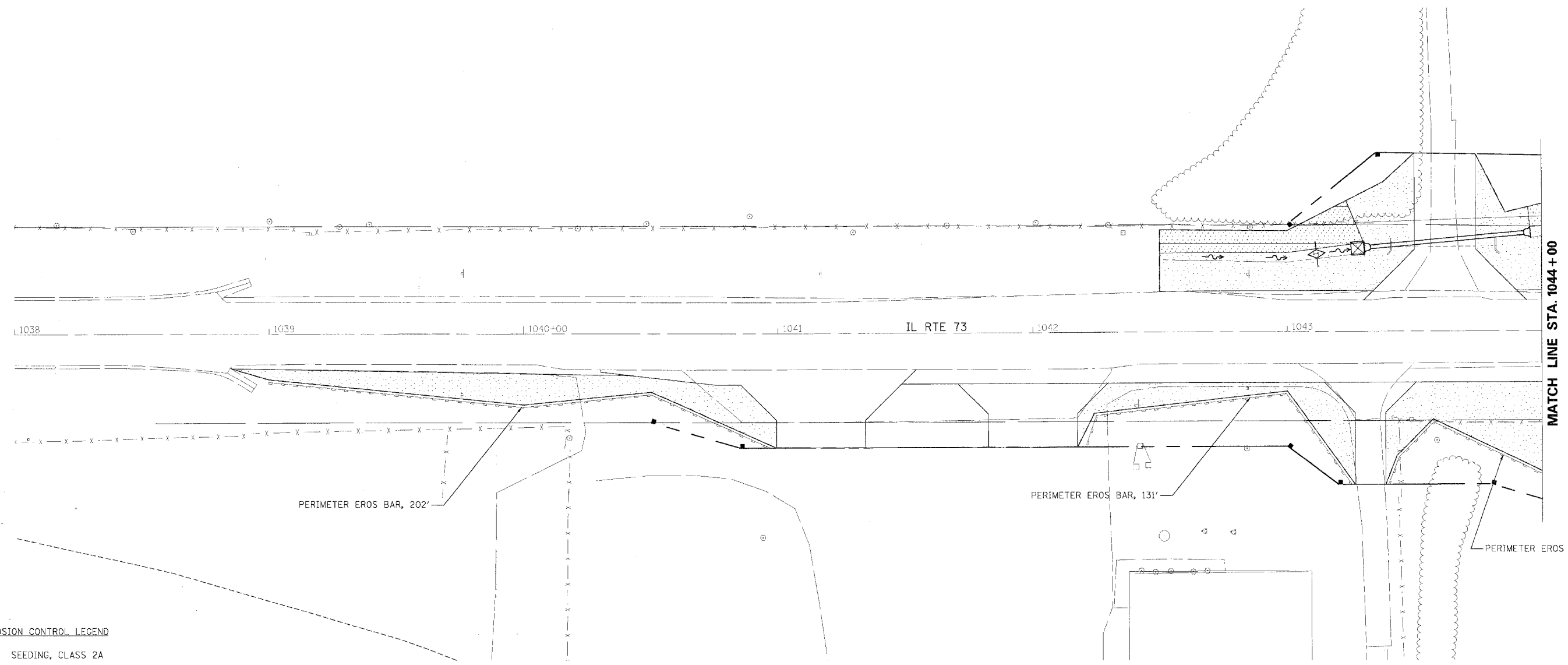
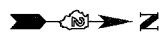


F.A.S. RTE.	SECTION	COUNTY	TOTAL SHEETS	SHEET NO.
1087	106T-1	STEPHENSON	79	29
STA. 1038+00		TO STA. 1044+00		
FED. ROAD DIST. NO.		ILLINOIS FED. AID PROJECT		



MATCH LINE STA. 1044+00

**EROSION CONTROL LEGEND**

- SEEDING, CLASS 2A
- SEEDING, CLASS 4
- INLET AND PIPE PROTECTION
- TEMPORARY DITCH CHECKS
- PERIMETER EROSION BARRIER
- PROPOSED DITCH FLOW



NOTE:  
 EROSION CONTROL BLANKET SHALL BE USED ON ALL SLOPES STEEPER THAN 3:1 AND ON THE BOTTOM OF ALL DITCHES.  
 MULCH, METHOD 2 SHALL BE USED WITH ALL OTHER SEEDING OPERATIONS.

REVISIONS	
NAME	DATE

ILLINOIS DEPARTMENT OF TRANSPORTATION  
**EROSION CONTROL PLAN**  
 IL RTE 73 CULVERT REPLACEMENTS  
 SN 089-1108

SCALE: VERT.: N.A.  
 HORIZ.: 1:20  
 DATE: OCTOBER 1, 2007  
 DRAWN BY: DLZ  
 CHECKED BY: GB

PLOT DATE = 10/01/07  
 PLOT SCALE = 1"=20'  
 USER NAME = DLZ