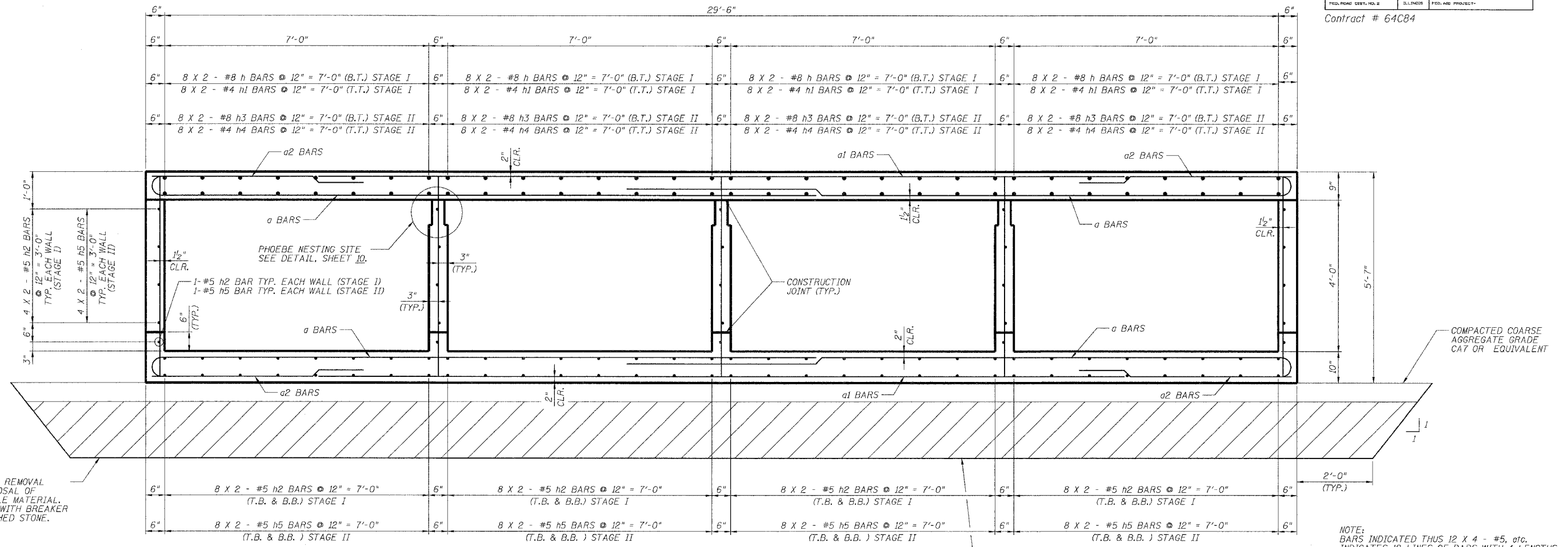


STATE OF ILLINOIS  
DEPARTMENT OF TRANSPORTATION

ROUTE NO.	SECTION	COUNTY	TOTAL SHEETS	SHEET NO.
F.A.S. 1087	106T-1	STEPHENSON	78	38
FED. ROAD DIST. NO. 2		ILLINOIS	FED. AID PROJECT	

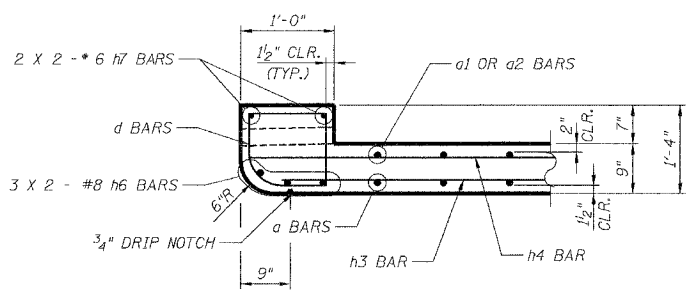
Contract # 64C84



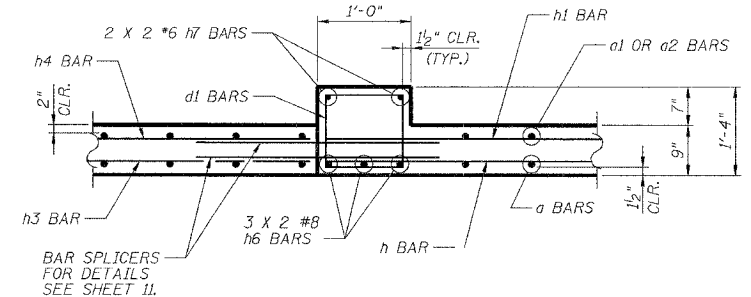
**SECTION THRU BARREL**

(ALL DIMENSIONS ARE PERPENDICULAR TO C OF CULVERT)

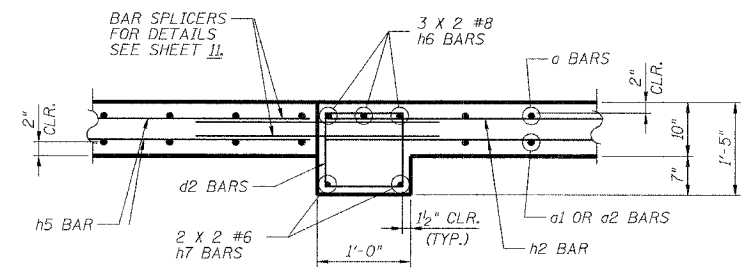
NOTES:  
BARS INDICATED THUS 12 X 4 - #5, etc.  
INDICATES 12 LINES OF BARS WITH 4 LENGTHS PER LINE.



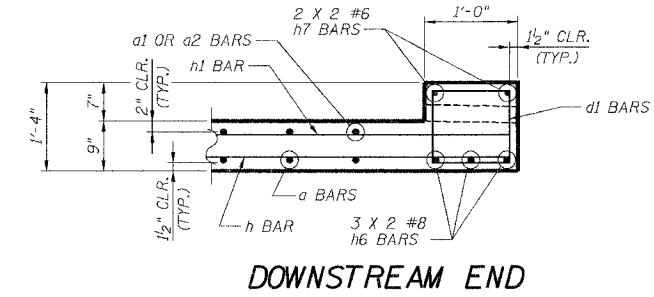
**UPSTREAM END**



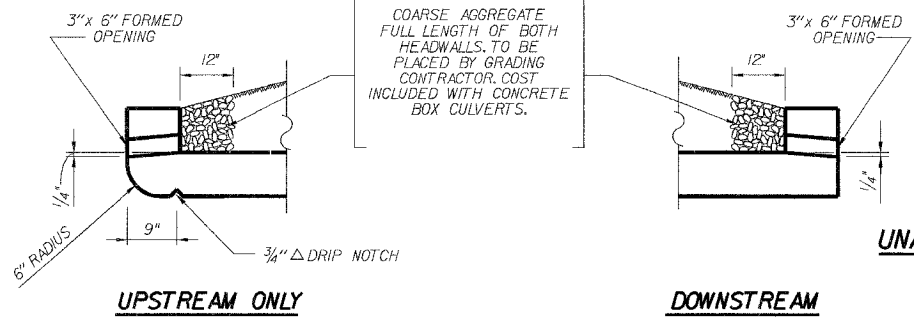
**INTERIOR**



**HEADWALL DETAILS**



**DOWNSTREAM END**



**DRAIN DETAIL**

DESIGNED -	WSP
CHECKED -	ASP
DRAWN -	BEM
CHECKED -	WSP

**TYPICAL SECTION & DETAILS**  
F.A.S. 1087 IL. RTE. 73 OVER  
UNAMED TRIBUTARY TO PECATONICA RIVER  
SECTION 106T-1  
STEPHENSON COUNTY  
STATION 966+60.00  
STRUCTURE NO. 089-1109